

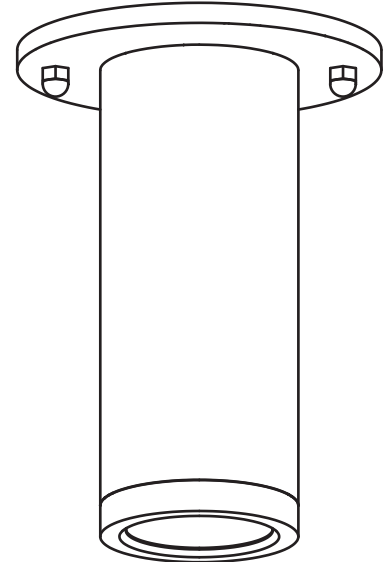
2.5" CYLINDER - SURFACE MOUNT PLATE LR43733, LR43734

IMPORTANT: READ ALL INSTRUCTIONS BEFORE INSTALLING FIXTURES. KEEP FOR FUTURE REFERENCE.

SAFETY: FOR YOUR SAFETY, THIS FIXTURE MUST BE WIRED IN ACCORDANCE TO LOCAL ELECTRICAL CODES AND ORDINANCES. ALL WORK SHOULD BE DONE BY A QUALIFIED ELECTRICIAN.

WARNING: MAKE SURE POWER IS OFF FROM THE ELECTRICAL PANEL BEFORE STARTING INSTALLATION OR ATTEMPTING ANY MAINTENANCE. INDOOR INSTALLATION ONLY.

TOOLS REQUIRED: SAW, MEASURING TAPE, ELECTRICAL WIRING (USE TAPE AND GAUGE SUITABLE FOR APPLICATION TO CONNECT THE FIXTURES).



INSTRUCTIONS

1. SELECT THE DESIRED LED COLOR TEMPERATURE USING THE SWITCH INSIDE THE CYLINDER. (5b)
 2. CONNECT THE QUICK CONNECTORS BETWEEN CYLINDER MODULE AND MOUNTING KIT WIRES. (5c)
 3. ASSEMBLE THE LUMINAIRE BY SCREWING THE TWO PARTS (5d).
 4. REMOVE THE UNIVERSAL SPIDER ADAPTER PLATE FROM THE LUMINAIRE BY UNSCREWING THE TWO SIDE CANOPY SCREWS (5e).
 5. INSTALL THE UNIVERSAL SPIDER ADAPTER PLATE ON THE CEILING RECESSED J-BOX BY SCREWING THE TWO SCREWS (5E)
 6. MAKE ELECTRICAL CONNECTIONS BETWEEN THE LUMINAIRE AND J-BOX WIRES AS SHOWN IN 5f. PUSH THE WIRES INTO THE JUNCTION BOX THROUGH THE CENTRAL HOLE OF THE UNIVERSAL SPIDER ADAPTER PLATE.
 7. INSTALL THE CANOPY OF LUMINAIRE ON THE CEILING UNIVERSAL ADAPTER PLATE BY USING THE TWO SIDE SCREWS (5g)
- NOTE: MAKE SURE THAT THE GASKET IS PROPERLY PLACED TO ASSURE THE WATERPROOFNESS OF THE LUMINAIRE.
8. TURN POWER BACK ON

INSTRUCTIONS

