



PL-L

18PL-L/COR/55-5CCT/MF28/G/4P 10/1

CorePro, LED, PL-L, 18 W, 2700 K, 3000 K, 3500 K, 4000 K, 5000 K, 2550 lm, 2550 lm, 2550 lm, 2800 lm, 2800 lm, 50000 hour(s)

Philips MainsFit (UL Type B) LED lamps make the transition to LED from CFL lamps as simple as replacing a lamp. With a wide array of color temperatures, the InstantFit LED lamps can quickly and effectively replace compact fluorescent lamps.

Product data

General Information			
Cap-Base	2G11	Power Consumption	18 W
Nominal lifetime	50,000 hour(s)	Lamp Current (Max)	190 mA
Switching Cycle	50,000	Lamp Current (Min)	85 mA
Lighting Technology	LED	Wattage Equivalent	50 W
		Starting Time (Nom)	0.5 s
		Warm-up time to 60% light	0.5 s
		Power Factor (Fraction)	0.9
		Voltage (Nom)	120-277 V
Light Technical		Temperature	
Color Code	2700/3000/3500/4000/5000	T-Case Maximum (Nom)	167 °F
Beam Angle (Nom)	140 degree(s)		
Luminous Flux	2,550 2,550 2,550 2,800 2,800 lm	Controls and Dimming	
Color Designation	2700/3000/3500/4000/5000	Dimmable	Only with specific dimmers
Correlated Color Temperature (Nom)	2700 3000 3500 4000 5000 K		
Luminous Efficacy (rated) (Nom)	155 lm/W	Mechanical and Housing	
Color Consistency	<6	Bulb Finish	Frosted
Color rendering index (CRI)	82	Bulb Material	Glass
LLMF At End Of Nominal Lifetime (Nom)	70 %	Product Length	20-3/4 inch
Operating and Electrical			
Input Frequency	50 to 60 Hz		

PL-L

Bulb Shape	PL-L
Net Weight (Piece)	0.353 lb

Approval and Application

EU RoHS compliant	Yes
Ambient temperature range	-4 to +113 °F

Application Conditions

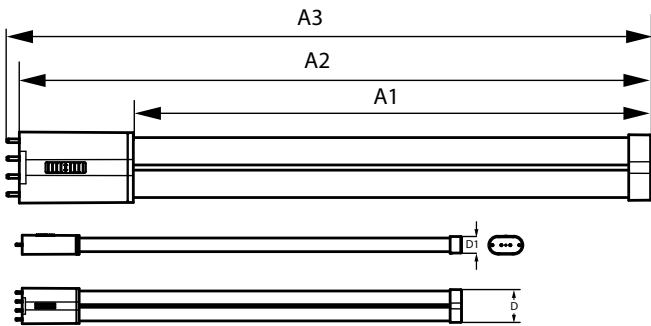
can it be used in closed luminaires	Yes
-------------------------------------	-----

Product Data

Order product name	18PL-L/COR/55-5CCT/MF28/G/4P 10/1
--------------------	-----------------------------------

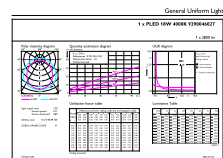
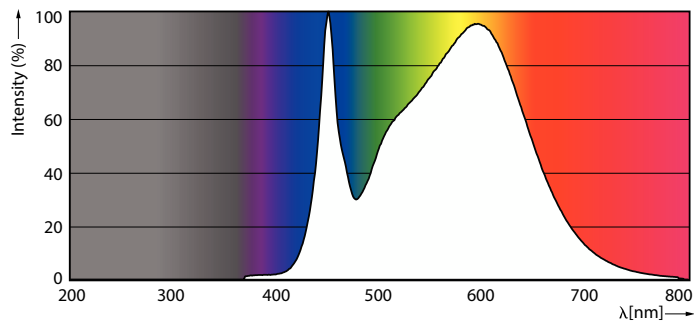
Full product name	18PL-L/COR/55-5CCT/MF28/G/4P 10/1
Order code	607150
Material Nr. (12NC)	929004602704
Numerator - Quantity Per Pack	1
EAN/UPC - Product/Case	046677607159
Numerator - Packs per outer box	10
EAN/UPC - Case	50046677607154

Dimensional drawing



Product	D1	D	A1	A2	A3
18PL-L/COR/55-5CCT/ MF28/G/4P 10/1	7/8 inch	1-5/8 inch	18 inch	20-3/4 inch	21-1/16 inch

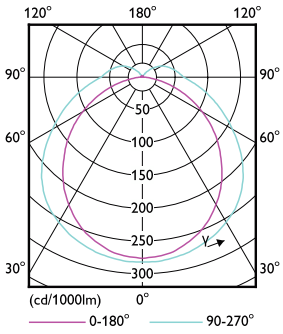
Photometric data



Spectral Power Distribution Colour - 18PL-L/COR/55-5CCT/MF28/G/4P 10/1

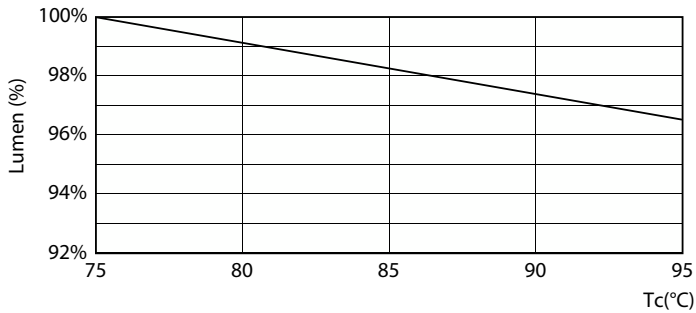
General uniform lighting - 18PL-L/COR/55-5CCT/MF28/G/4P 10/1

Photometric data

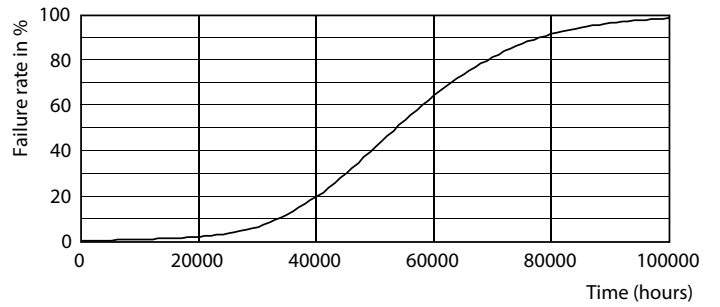


Light Distribution Diagram - 18PL-L/COR/55-5CCT/MF28/G/4P 10/1

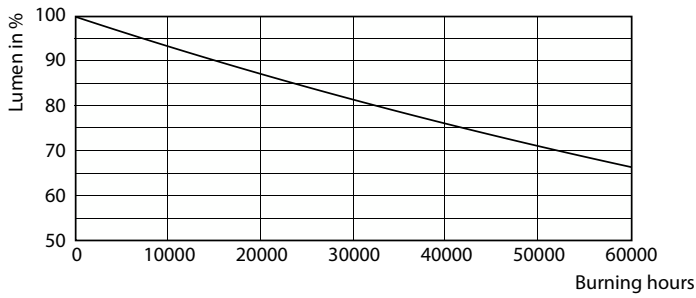
Lifetime



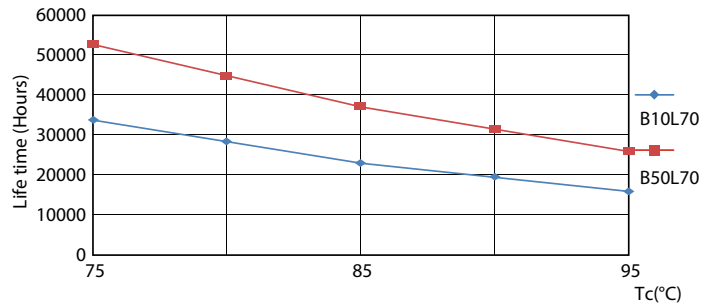
Lumen Maintenance Diagram - 18PL-L/COR/55-5CCT/MF28/G/4P 10/1



Life Expectancy Diagram

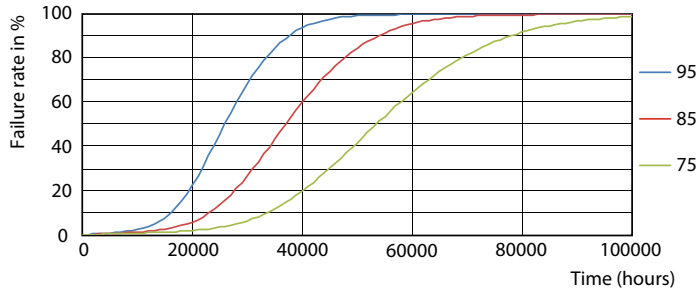


Lumen Maintenance Diagram - 18PL-L/COR/55-5CCT/MF28/G/4P 10/1



LEDtube 50K 7595 LifetimeVsTc-LED

Lifetime



LEDtube 50K 7595 FailureRate-LED

