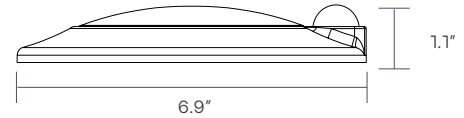


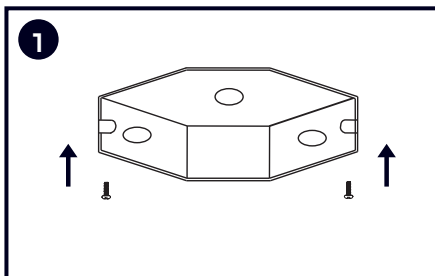
4" LED PIR SENSOR DISK LIGHT - 3 CCT SELECTABLE LR23832

Provides surface mount light for new construction applications. Unit fits most 4" junction boxes and can replace 5", 6" recessed can lights to eliminate baffles and fire rated boxes. It is also suitable for use in dry, damp or wet locations.

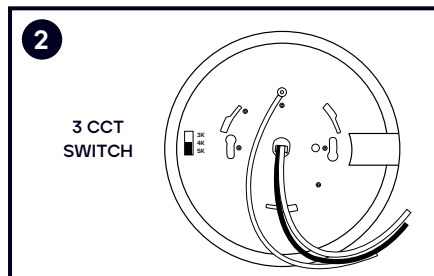


WARNING: FOR YOUR SAFETY READ AND UNDERSTAND INSTRUCTIONS COMPLETELY BEFORE STARTING INSTALLATION. BEFORE WIRING TO POWER SUPPLY, TURN OFF ELECTRICITY AT THE FUSE OR CIRCUIT BREAKER BOX.

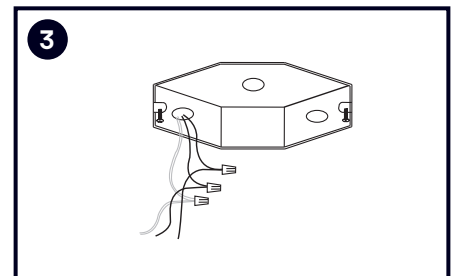
SURFACE MOUNT INSTALLATION



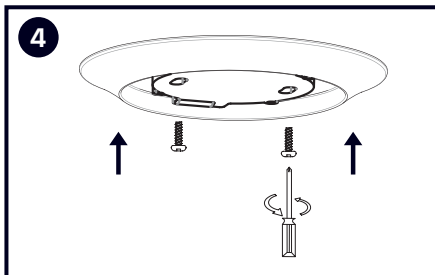
1. PRIOR TO INSTALLATION. Please install two screws (furnished) into the junction box. DO NOT drive screws completely to the end of the junction box.



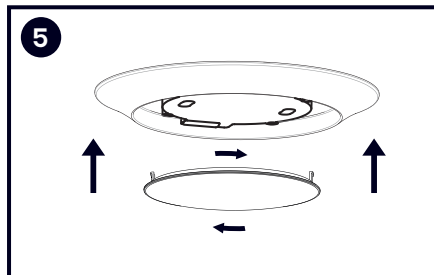
2. Select Color Temperature on CCT Switch located on the back of the fixture.



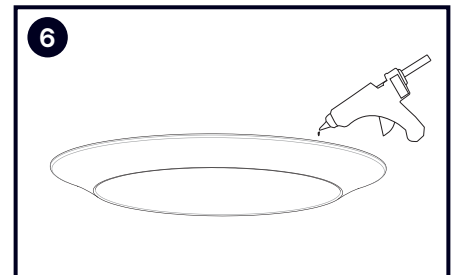
3. Connect supply wires to wires in fixture wiring box with proper size wire nuts or push wires into "push-in" connector. Connect white to white, black to black, and green or bare copper to bare copper wire. The ground wire at the service junction box may need to be secured to a ground screw.



4. With a Phillips screwdriver, attach the disk light lightly to the j-box.

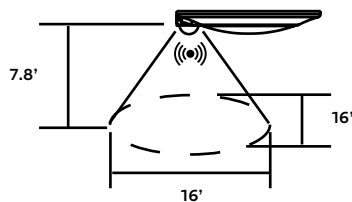


5. Complete the installation by twisting the diffuser on the disk light aluminum enclosure and lock the diffuser in place.

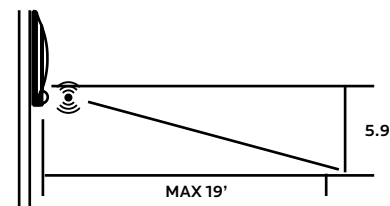


6. The edge of the fixture and the ceiling use waterproof silicone to seal.

SENSOR DETECTION RANGE CEILING MOUNT DETECTION RANGE



WALL MOUNT DETECTION RANGE



WARNING

RISK OF FIRE SUPPLY CONDUCTORS (POWER WIRES) CONNECTING THE FIXTURE MUST BE RATED MINIMUM 90°C. IF UNCERTAIN, CONSULT AN ELECTRICIAN.
RISK OF ELECTRIC SHOCK DISCONNECT POWER AT FUSE OR CIRCUIT BREAKER BEFORE INSTALLING OR SERVICING.
RISK OF FIRE/ELECTRIC SHOCK IF NOT QUALIFIED, CONSULT AN ELECTRICIAN.

VOLTAGE: 120V, 60Hz ac operation
WATTAGE: 10W - 28 pcs LED chips
LUMENS: 600 lumens, CRI 80
DIFFUSER: Translucent White PC Opal Diffuser.
HARDWARE: All mounting screws and wire connectors