

## LED LINEAR STRIP LINEAR - 5CCT & 4 WATTAGE SELECT 24", 36", 48", 96" - HIGH OUTPUT - SENSOR READY



24"

LR25360

13W 17W 21W 26W

EMERGENCY OPTION  
ALSO AVAILABLE

LR25360+EM



24"

36"

LR25362

13W 17W 21W 26W

EMERGENCY OPTION  
ALSO AVAILABLE

LR25362+EM



36"



48"

LR25363

21W 26W 34W 40W

LR25364

40W 47W 53W 68W

EMERGENCY OPTION  
ALSO AVAILABLE

LR25363+EM

LR25364+EM



48"



96"

LR25365

40W 53W 68W 80W

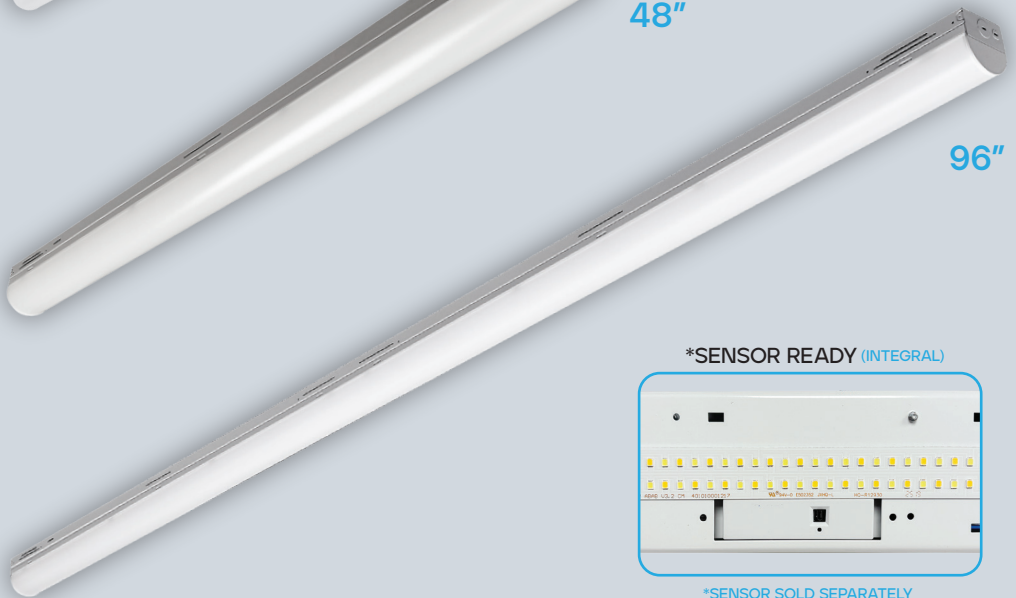
LR25366

80W 94W 106W 136W

EMERGENCY OPTION  
ALSO AVAILABLE

LR25365+EM

LR25366+EM



96"

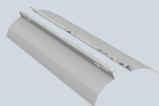
\*SENSOR READY (INTEGRAL)



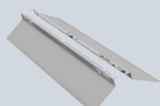
\*SENSOR SOLD SEPARATELY

### AVAILABLE ACCESSORIES

\*SOLD SEPARATELY



LR25367  
4' REFLECTOR



LR25371  
4' REFLECTOR  
STRAIGHT



LR25369  
SUSPENSION  
MOUNT KIT



LR25374  
10' SUSPENSION  
MOUNT KIT



LR25370  
CHAIN KIT



LR25368  
STRAIGHT  
CONNECTOR



LR25359  
ANGLE  
CONNECTOR



LR25378  
4' WIRE GUARD

CRI  
80

COLOR SELECTABLE

3000K 3500K 4000K 5000K 6500K

WATTAGE  
SELECTABLE

4 OPTIONS



\*OPTION  
AVAILABLE



SENSOR  
READY

DIMMABLE

0-10V

120-  
277V

HIGH  
OUTPUT



DAMP  
LOCATION  
RATED



5  
YEAR  
WARRANTY

## ELECTRICAL

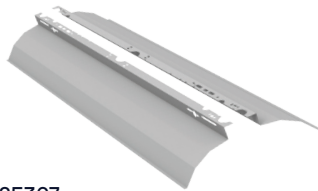
	MODEL	DESCRIPTION	INPUT VOLTS	POWER	LUMEN	EFFICACY	LIFETIME	EMERGENCY TIME
24"	VERY HIGH OUTPUT	LR25360	LED24/LINEAR/5CCT/4WO/UNV/D/VHO	120-277V	13	2,000	150	0-10V
					17	2,500		
					21	3,000		
					26	4,000		
	LR25360+EM	LED24/LINEAR/5CCT/4WO/UNV/D/VHO+EM	120-277V	13	2,000	150	0-10V	90 MINS
				17	2,500			
				21	3,000			
				26	4,000			
36"	HIGH OUTPUT	LR25362	LED36/LINEAR/5CCT/4WO/UNV/D/HO	120-277V	13	2,000	150	0-10V
					17	2,600		
					21	3,200		
					26	4,000		
	LR25362+EM	LED36/LINEAR/5CCT/4WO/UNV/D/HO+EM	120-277V	13	2,000	150	0-10V	90 MINS
				17	2,600			
				21	3,200			
				26	4,000			
48"	HIGH OUTPUT	LR25363	LED48/LINEAR/5CCT/4WO/UNV/D/HO	120-277V	21	3,300	150	0-10V
					26	4,100		
					34	5,200		
					40	6,300		
	LR25363+EM	LED48/LINEAR/5CCT/4WO/UNV/D/HO+EM	120-277V	21	3,300	150	0-10V	90 MINS
				26	4,100			
				34	5,200			
				40	6,300			
	VERY HIGH OUTPUT	LR25364	LED48/LINEAR/5CCT/4WO/UNV/D/VHO	120-277V	40	6,000	150	0-10V
					47	7,000		
					53	8,000		
					68	10,000		
LR25364+EM	LED48/LINEAR/5CCT/4WO/UNV/D/VHO+EM	120-277V	40	6,000	150	0-10V	90 MINS	
			47	7,000				
			53	8,000				
			68	10,000				
96"	HIGH OUTPUT	LR25365	LED96/LINEAR/5CCT/4WO/UNV/D/HO	120-277V	40	6,600	150	0-10V
					53	8,200		
					68	10,400		
					80	12,600		
	LR25365+EM	LED96/LINEAR/5CCT/4WO/UNV/D/HO+EM	120-277V	40	6,600	150	0-10V	90 MINS
				53	8,200			
				68	10,400			
				80	12,600			
	VERY HIGH OUTPUT	LR25366	LED96/LINEAR/5CCT/4WO/UNV/D/VHO	120-277V	80	13,000	150	0-10V
					94	15,000		
					106	16,000		
					136	20,000		
LR25366+EM	LED96/LINEAR/5CCT/4WO/UNV/D/VHO+EM	120-277V	80	13,000	150	0-10V	90 MINS	
			94	15,000				
			106	16,000				
			136	20,000				

## PHOTOMETRIC

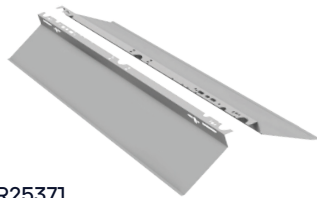
MODEL	DESCRIPTION	COLOR SELECTABLE (CCT)	FLOOD°	CRI	UL	DLC LISTED
LR25360	LED24/LINEAR/5CCT/4WO/UNV/D/VHO	3000K/3500K/4000K/5000K/6500K	110°	80	YES	S-RF7TVD STANDARD
LR25360+EM	LED24/LINEAR/5CCT/4WO/UNV/D/VHO+EM	3000K/3500K/4000K/5000K/6500K	110°	80	YES	S-RF7TVD STANDARD
LR25362	LED36/LINEAR/5CCT/4WO/UNV/D/HO	3000K/3500K/4000K/5000K/6500K	110°	80	YES	
LR25362+EM	LED36/LINEAR/5CCT/4WO/UNV/D/HO+EM	3000K/3500K/4000K/5000K/6500K	110°	80	YES	
LR25363	LED48/LINEAR/5CCT/4WO/UNV/D/HO	3000K/3500K/4000K/5000K/6500K	110°	80	YES	S-68LP81 PREMIUM
LR25363+EM	LED48/LINEAR/5CCT/4WO/UNV/D/HO+EM	3000K/3500K/4000K/5000K/6500K	110°	80	YES	S-68LP81 PREMIUM
LR25364	LED48/LINEAR/5CCT/4WO/UNV/D/VHO	3000K/3500K/4000K/5000K/6500K	110°	80	YES	S-1XP54S PREMIUM
LR25364+EM	LED48/LINEAR/5CCT/4WO/UNV/D/VHO+EM	3000K/3500K/4000K/5000K/6500K	110°	80	YES	S-1XP54S PREMIUM
LR25365	LED96/LINEAR/5CCT/4WO/UNV/D/HO	3000K/3500K/4000K/5000K/6500K	110°	80	YES	S-9X2RN8 PREMIUM
LR25365+EM	LED96/LINEAR/5CCT/4WO/UNV/D/HO+EM	3000K/3500K/4000K/5000K/6500K	110°	80	YES	S-9X2RN8 PREMIUM
LR25366	LED96/LINEAR/5CCT/4WO/UNV/D/VHO	3000K/3500K/4000K/5000K/6500K	110°	80	YES	S-VBB1DX PREMIUM
LR25366+EM	LED96/LINEAR/5CCT/4WO/UNV/D/VHO+EM	3000K/3500K/4000K/5000K/6500K	110°	80	YES	S-VBB1DX PREMIUM

## ACCESSORIES

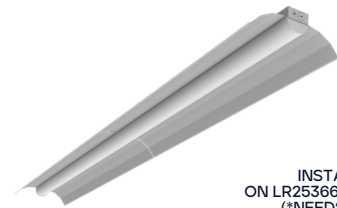
\*SOLD SEPARATELY



LR25367  
4' REFLECTOR



LR25371  
4' REFLECTOR  
STRAIGHT



INSTALLED  
ON LR25366 OR LR25365  
(\*NEEDS 2 PCS)



LR25368  
STRAIGHT  
CONNECTOR



LR25369  
SUSPENSION  
MOUNT KIT



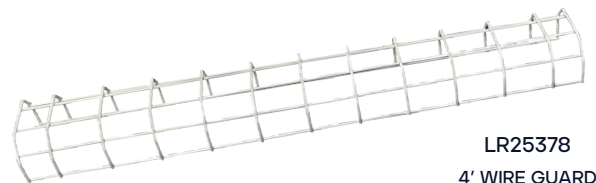
LR25374  
10' SUSPENSION  
MOUNT KIT



LR25370  
CHAIN KIT



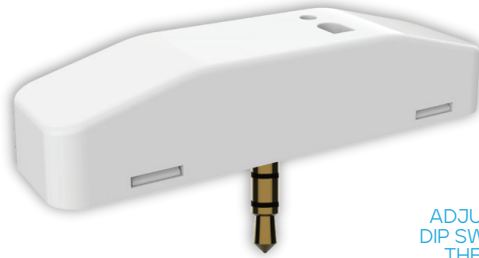
LR25359  
ANGLE  
CONNECTOR



LR25378  
4' WIRE GUARD

## SENSOR COMPATIBILITY

**LR25375**  
AUDIO JACK  
STANDARD SENSOR



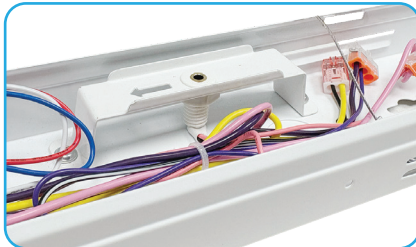
WORKS WITH:  
**LR25189**  
MW BI-LEVEL  
REMOTE



ADJUSTABLE  
DIP SWITCH ON  
THE BACK

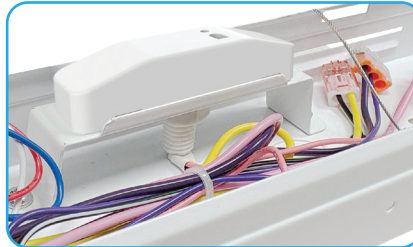


SENSOR\* READY



\*SENSOR SOLD SEPARATELY

SENSOR INSTALLED



## MOTION SENSOR - SPECIFICATIONS

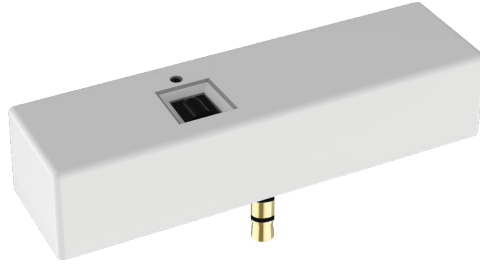
MODEL	DESCRIPTION	POWER	INPUT VOLTS	DIMMING	INSTALL HEIGHT	DETECTION RANGE	DETECTION ANGLE
LR25375	LEDSNS/A/LINEAR/MW/BILEVEL/IP	<0.5W	10-15V	0-10V	13FT	22.9FT	30-150°

AMBIENT TEMPERATURE: -13°F ~ 140°F

SENSOR PARAMETER	DESCRIPTION	DETAILS
Detection Area	Remote Control Only: 25%/50%/75%/100%	
Holdtime	Remote control Options : 5s/ 30s/ 1min/ 3min/ 5min/ 10min/ 20min/ 30min DIP switch: 5s/5min	
Daylight Threshold	Remote control: Disable/400Lux/350Lux/300Lux/250Lux/200Lux/120Lux/ 80Lux/50Lux/30Lux/10Lux/2Lux DIP Switch: Disable/50Lux	
Standby Dimming Level	Remote control: 10%/20%/30%/50%    DIP Switch: 5min/+∞	
Standby Period	Remote control Options : 0s/ 10s/ 30s/ 1min/ 5min/ 10min/ 30min/ 60min/+∞ DIP Switch: 5min/+∞	
Dusk/Dawn Sensing/ Photocell	Daylight threshold as 30lux/ 50lux/ 80lux/ 120lux/ 200Lux/ 250Lux/300Lux/ 350Lux/ 400Lux Standby period as +∞ ; Standby dimming level as 10%/20%/30%	
Daylight Harvesting	1. Adjust "daylight" value higher than 50lux 2. Preset "standby period" 0S 3. Press MW/PIR button 3 times till MW/PIR icons both blinking on LCD screen, daylight harvesting function enabled. (With BLE version, press DH button, daylight harvesting function enabled.)	

## SENSOR COMPATIBILITY

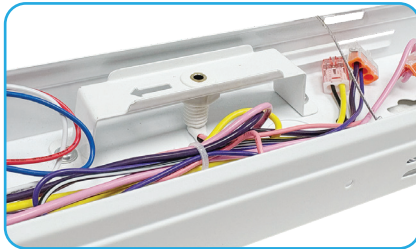
**LR25372**  
AUDIO JACK  
STANDARD SENSOR



WORKS WITH:  
**LR25189**  
MW BI-LEVEL  
REMOTE

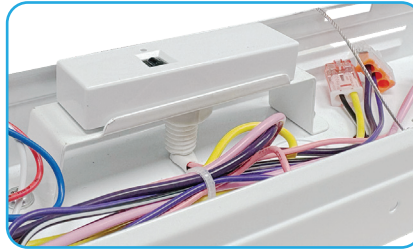


SENSOR\* READY



\*SENSOR SOLD SEPARATELY

SENSOR INSTALLED



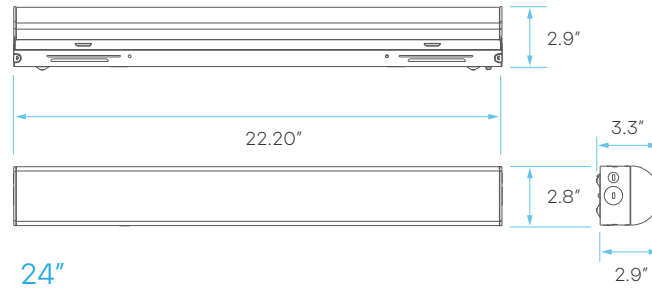
## MOTION SENSOR - SPECIFICATIONS

MODEL	DESCRIPTION	POWER	INPUT VOLTS	DIMMING	INSTALL HEIGHT	DETECTION RANGE	DETECTION ANGLE
LR25372	LEDSNS/LINEAR/MW/BILEVEL/1P	<0.3W	12V	0-10V	13.12FT	9FT	30-150°

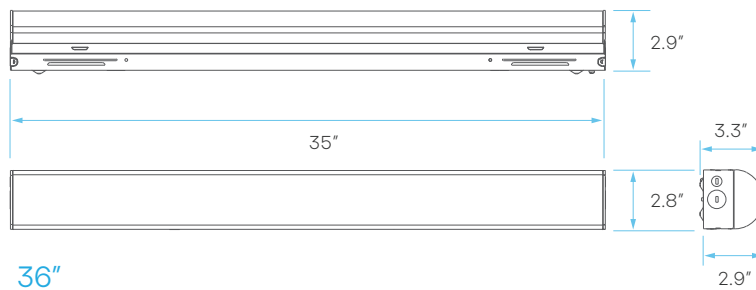
AMBIENT TEMPERATURE: -13°F ~ 140°F

SENSOR PARAMETER	DESCRIPTION	VALUES
Detection Area		25%/50%/75%/100%
Holdtime		Remote control Options : 5s/ 30s/ 1min/ 3min/ 5min/ 10min/ 20min/ 30min APP Control Options : 5s/ 30s/ 1min/ 2min/ 3min/ 5min/ 10min/ 15min/ 20min/ 25min/30min/ 45min/ 60min/ 90min/ 120min
Daylight Threshold		Disable/400Lux/350Lux/300Lux/250Lux/200Lux/120Lux/ 80Lux/50Lux/30Lux/10Lux/2Lux
Standby Dimming Level		10%/20%/30%/50%
Standby Period		Remote control Options : 0s/ 10s/ 30s/ 1min/ 5min/ 10min/ 30min/ 60min/+∞ APP Control Options : 0s/5s/30s/1min/2min/3min/5min/10min/15min/20min/ 25min/30min/45min/60min/+∞
Dusk/Dawn Sensing/ Photocell		Daylight threshold as 30lux/ 50lux/ 80lux/ 120lux/ 200Lux/ 250Lux/300Lux/ 350Lux/ 400Lux Standby period as +∞ ; Standby dimming level as 10%/20%/30%
Daylight Harvesting		1. Adjust "daylight" value higher than 50lux 2. Preset "standby period" 0S 3. Press MW/PIR button 3 times till MW/PIR icons both blinking on LCD screen, daylight harvesting function enabled. (With BLE version, press DH button, daylight harvesting function enabled.)

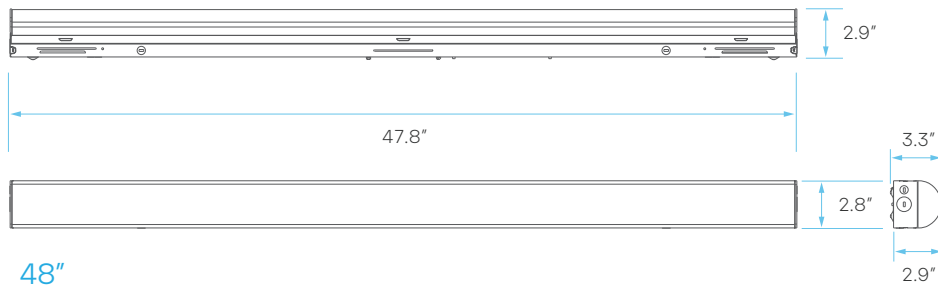
## DIMENSIONS



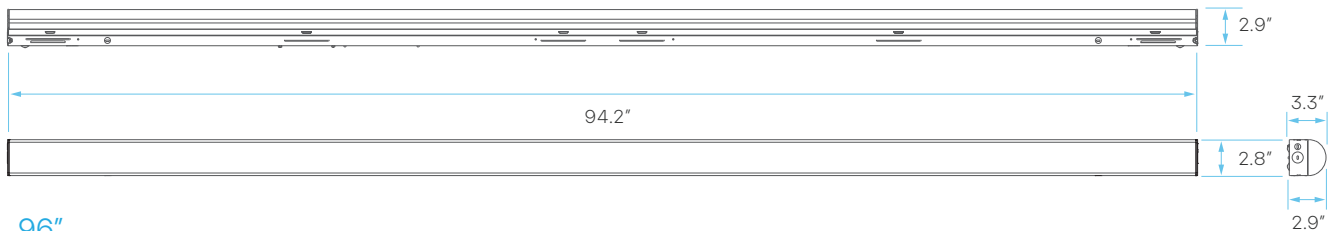
24"



36"



48"



96"