

LUXRITE®

LED CANLESS - SPOTLIGHT REGRESSED MULTI-HEAD TRIMLESS OMNI SERIES



LR32200



LR32201



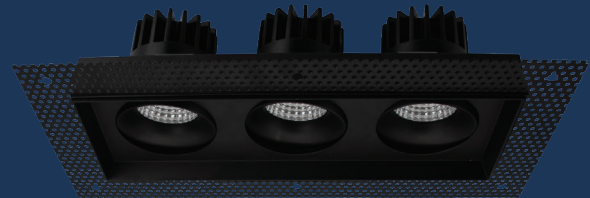
LR32202



LR32203



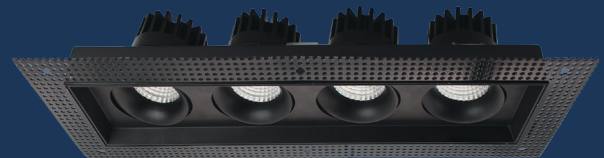
LR32204



LR32205



LR32206



LR32207



COLOR SELECTABLE

2700K 3000K 3500K 4000K 5000K





LR32200

LED/OMNI1/TL/5CCCT/HC/G/WFL/DD/UNV/WT



LR32201

LED/OMNI1/TL/5CCCT/HC/G/WFL/DD/UNV/BK



LR32200



LR32201

APERTURE	1 HEAD
DISTRIBUTION	ADJUSTABLE
APPLICATION	NEW CONSTRUCTION/TRIMLESS

ELECTRICAL

POWER	15W
INPUT VOLTS	120-277V
INPUT CURRENT	125mA
FREQUENCY	60Hz
DIMMING TYPE	TRIAC/0-10V
DIMMING RANGE	10-100%
FEED WIRE GAUGE	18AWG
BREAKER SPECIFICATION (15A @120V)	79pcs*

*Mathematically estimated value. Actual capacity may vary by breaker type and installation environment.

PHOTOMETRIC

COLOR CCT	2700K/3000K/3500K/4000K/5000K
CRI	90
LUMEN	LR32200: 1000lm LR32201: 1000lm
EFFICACY	67lm/w
BEAM ANGLE	LR32200: 60° LR32201: 60°

CERTIFICATIONS & SAFETY

LR32200	ETL
LR32201	ETL
IP RATING	IP54
WET LOCATION	YES
IC RATED	YES
AIR TIGHT	YES
OPERATING TEMP.	-4°F to 104°F
COST/YR	\$ 1.80
WARRANTY	5 YR

MATERIAL & APPLICATION

HEAT SINK	DIE-CAST ALUMINUM
TRIM	ALUMINUM
LENS	ACRYLIC
CUTOUT	4.25" X 4.25"
MOUNTING TYPE	RECESSED
ROTATION	360°
TILT	15°
AREA OF APPLICATION	RESIDENTIAL, COMMERCIAL
CEILING TYPE	DRYWALL

DRIVER

	POWER	INPUT VOLTS	INPUT CURRENT	FREQUENCY	INPUT POWER	OUTPUT VOLTAGE	DIMENSIONS	KNOCKOUTS
INCLUDED DRIVER	15W	120-277V	125mA	50/60Hz	15W max	36V DC	5.35"L X 2.18"W X 2.22"H	2

MODEL	DESCRIPTION	EM POWER	INPUT VOLTS	INPUT CURRENT	FREQUENCY	INPUT POWER	OUTPUT VOLTAGE	RECHARGE TIME	EMERGENCY TIME
LR35126**	LED/EMR/15W/AC/SF/E	15	100-347V	100mA	50/60Hz	12W max	170V DC	24HR	90MINS

*AMBIENT TEMPERATURE: 41°F ~ 122°F
**SOLD SEPARATELY

DIMENSIONS

CUTOUT: 4.25" X 4.25"

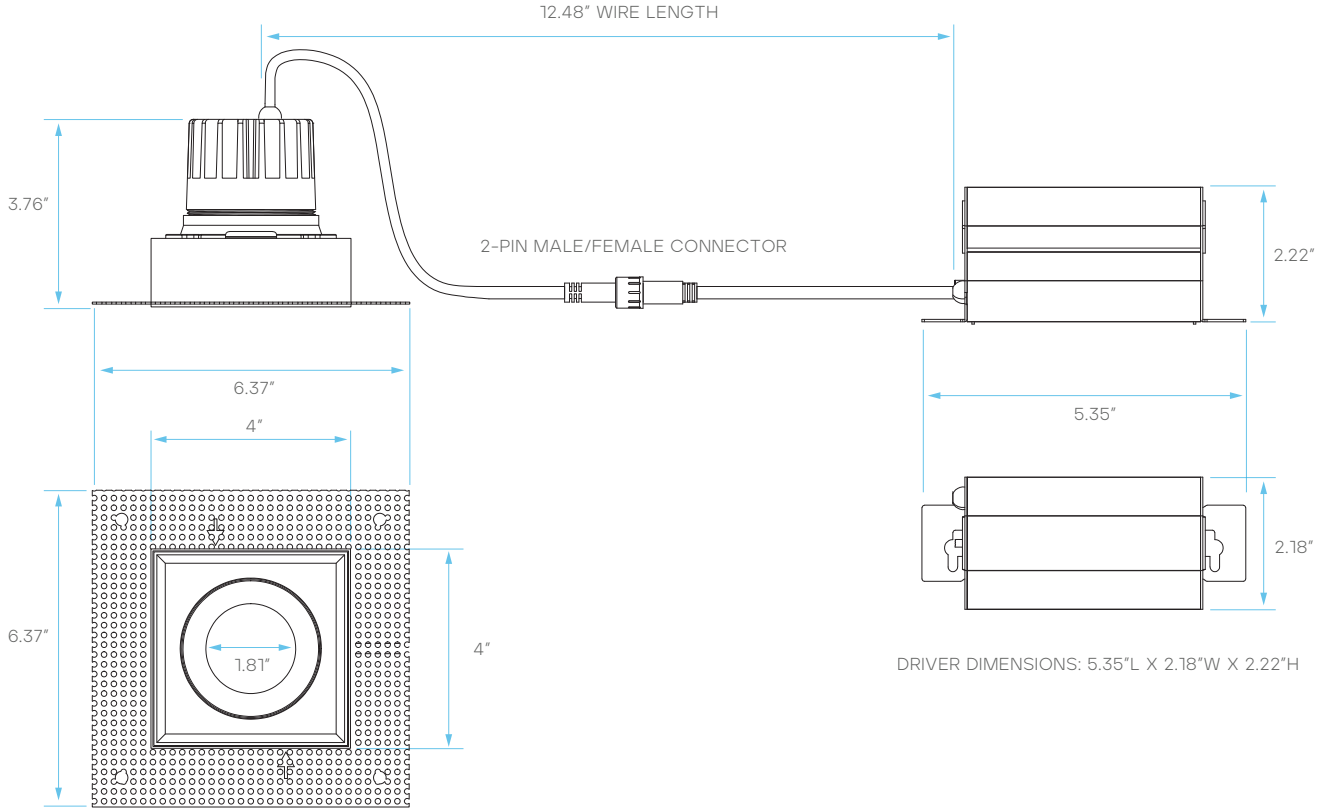
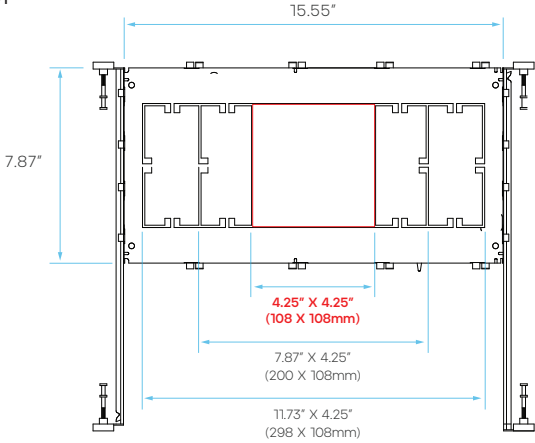


PLATE COMPATIBILITY*

*SOLD SEPARATELY

LR41013
KNOCKOUT
O



LR32202

LED/OMNI2/TL/5CCT/HC/G/WFL/DD/UNV/WT



LR32203

LED/OMNI2/TL/5CCT/HC/G/WFL/DD/UNV/BK



LR32202



LR32203

APERTURE	2 HEAD
DISTRIBUTION	ADJUSTABLE
APPLICATION	NEW CONSTRUCTION/TRIMLESS

ELECTRICAL

POWER	30W
INPUT VOLTS	120-277V
INPUT CURRENT	250mA
FREQUENCY	60Hz
DIMMING TYPE	TRIAC/0-10V
DIMMING RANGE	10-100%
FEED WIRE GAUGE	18AWG
BREAKER SPECIFICATION *(15A @120V)	39pcs*

*Mathematically estimated value. Actual capacity may vary by breaker type and installation environment.

PHOTOMETRIC

COLOR CCT	2700K/3000K/3500K/4000K/5000K
CRI	90
LUMEN	LR32202: 2000lm LR32203: 2000lm
EFFICACY	66lm/w
BEAM ANGLE	LR32202: 60° LR32203: 60°

CERTIFICATIONS & SAFETY

LR32202	ETL
LR32203	ETL
IP RATING	IP54
WET LOCATION	YES
IC RATED	YES
AIR TIGHT	YES
OPERATING TEMP.	-4°F to 104°F
COST/YR	\$ 3.61
WARRANTY	5 YR

MATERIAL & APPLICATION

HEAT SINK	DIE-CAST ALUMINUM
TRIM	ALUMINUM
LENS	ACRYLIC
CUTOUT	7.87" X 4.25"
MOUNTING TYPE	RECESSED
ROTATION	360°
TILT	15°
AREA OF APPLICATION	RESIDENTIAL, COMMERCIAL
CEILING TYPE	DRYWALL

DRIVER

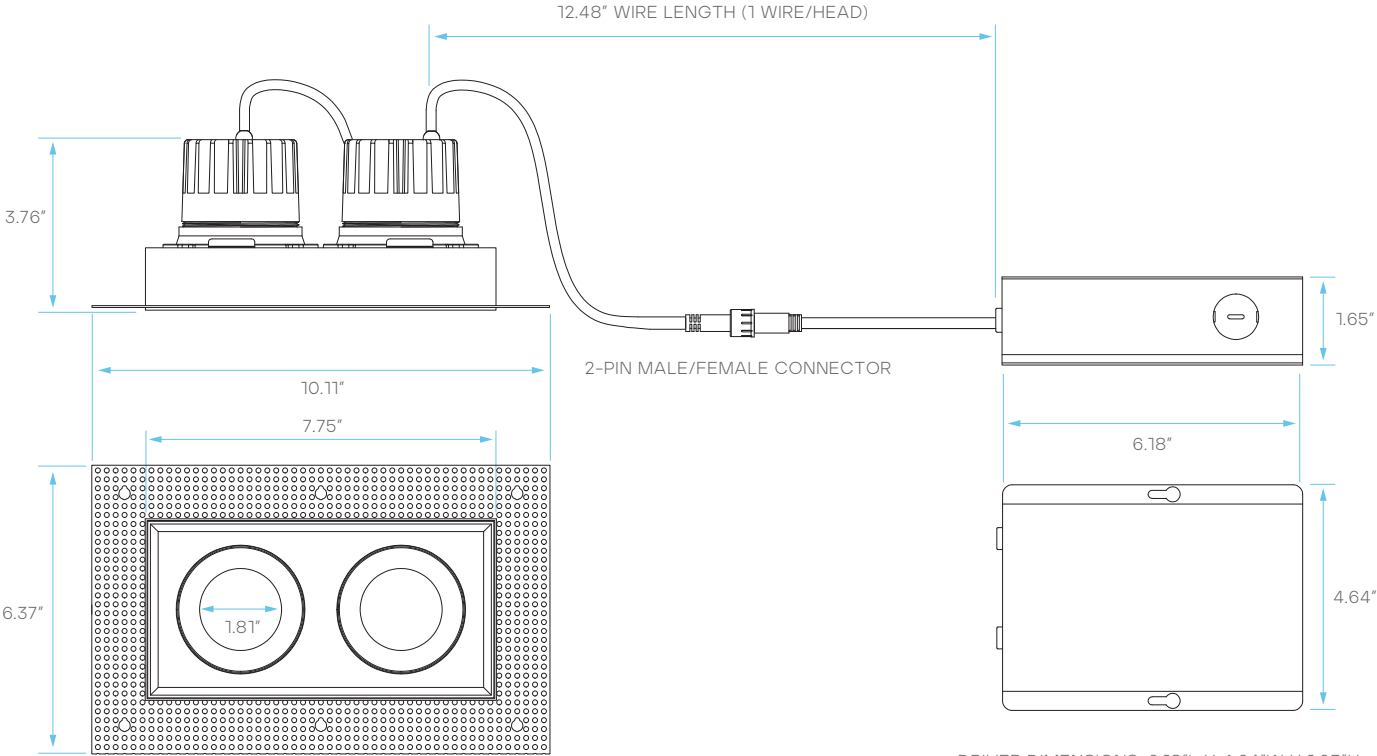
	POWER	INPUT VOLTS	INPUT CURRENT	FREQUENCY	INPUT POWER	OUTPUT VOLTAGE	DIMENSIONS	KNOCKOUTS
INCLUDED DRIVER	30W	120-277V	250mA	50/60Hz	30W max	36V DC	6.18"L X 4.64"W X 1.65"H	4

MODEL	DESCRIPTION	EM POWER	INPUT VOLTS	INPUT CURRENT	FREQUENCY	INPUT POWER	OUTPUT VOLTAGE	RECHARGE TIME	EMERGENCY TIME
LR35126**	LED/EMR/15W/AC/SF/E	15	100-347V	100mA	50/60Hz	12W max	170V DC	24HR	90MINS

*AMBIENT TEMPERATURE: 41°F ~ 122°F
**SOLD SEPARATELY

DIMENSIONS

CUTOUT: 7.87" X 4.25"

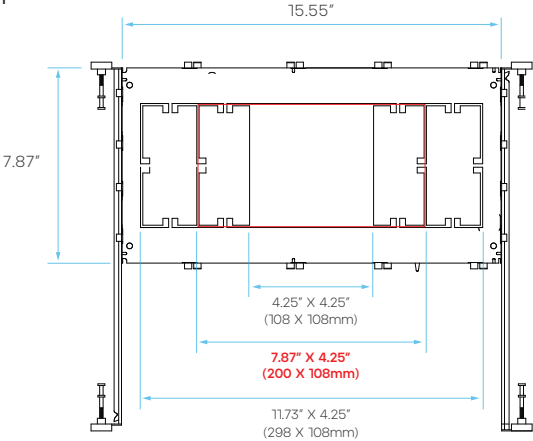


DRIVER DIMENSIONS: 6.18"L X 4.64"W X 1.65"H

PLATE COMPATIBILITY*

*SOLD SEPARATELY

LR41013
KNOCKOUT
1



LR32204

LED/OMNI3/TL/5CCT/HC/G/WFL/DD/UNV/WT

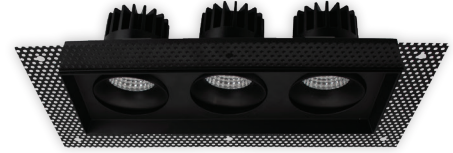


LR32205

LED/OMNI3/TL/5CCT/HC/G/WFL/DD/UNV/BK



LR32204



LR32205

APERTURE	3 HEAD
DISTRIBUTION	ADJUSTABLE
APPLICATION	NEW CONSTRUCTION/TRIMLESS

ELECTRICAL

POWER	45W
INPUT VOLTS	120-277V
INPUT CURRENT	375mA
FREQUENCY	60Hz
DIMMING TYPE	TRIAC/0-10V
DIMMING RANGE	10-100%
FEED WIRE GAUGE	18AWG
BREAKER SPECIFICATION (15A @120V)	26pcs*

*Mathematically estimated value. Actual capacity may vary by breaker type and installation environment.

PHOTOMETRIC

COLOR CCT	2700K/3000K/3500K/4000K/5000K
CRI	90
LUMEN	LR32204: 3000lm LR32205: 3000lm
EFFICACY	66lm/w
BEAM ANGLE	LR32204: 60° LR32205: 60°

CERTIFICATIONS & SAFETY

LR32204	ETL
LR32205	ETL
IP RATING	IP54
WET LOCATION	YES
IC RATED	YES
AIR TIGHT	YES
OPERATING TEMP.	-4°F to 104°F
COST/YR	\$ 5.42
WARRANTY	5 YR

MATERIAL & APPLICATION

HEAT SINK	DIE-CAST ALUMINUM
TRIM	ALUMINUM
LENS	ACRYLIC
CUTOUT	11.73" X 4.25"
MOUNTING TYPE	RECESSED
ROTATION	360°
TILT	15°
AREA OF APPLICATION	RESIDENTIAL, COMMERCIAL
CEILING TYPE	DRYWALL

DRIVER

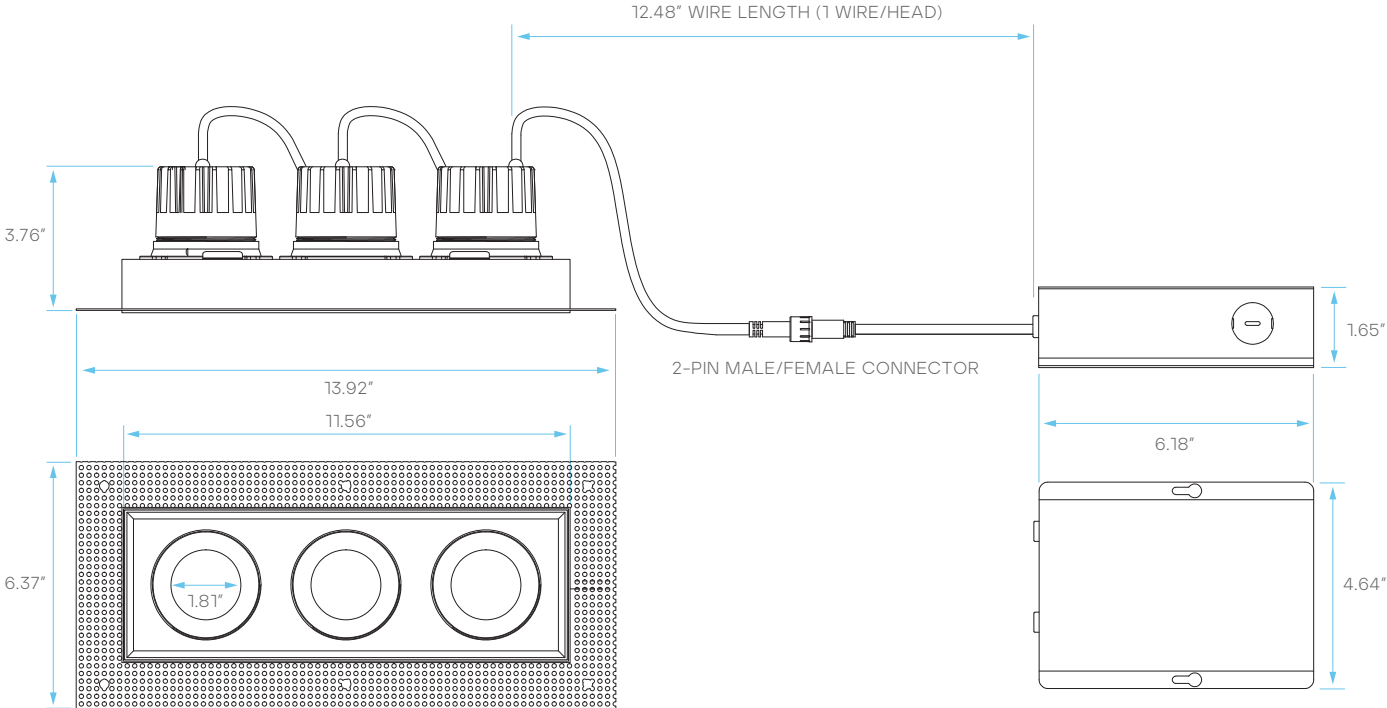
	POWER	INPUT VOLTS	INPUT CURRENT	FREQUENCY	INPUT POWER	OUTPUT VOLTAGE	DIMENSIONS	KNOCKOUTS
INCLUDED DRIVER	45W	120-277V	375mA	50/60Hz	45W max	36V DC	6.18"L X 4.64"W X 1.65"H	4

MODEL	DESCRIPTION	EM POWER	INPUT VOLTS	INPUT CURRENT	FREQUENCY	INPUT POWER	OUTPUT VOLTAGE	RECHARGE TIME	EMERGENCY TIME
LR35126**	LED/EMR/15W/AC/SF/E	15	100-347V	100mA	50/60Hz	12W max	170V DC	24HR	90MINS

*AMBIENT TEMPERATURE: 41°F ~ 122°F
**SOLD SEPARATELY

DIMENSIONS

CUTOUT: 11.73" X 4.25"

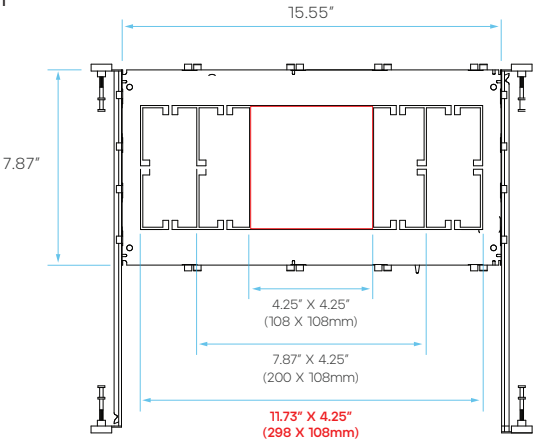


DRIVER DIMENSIONS: 6.18"L X 4.64"W X 1.65"H

PLATE COMPATIBILITY*

*SOLD SEPARATELY

LR41013
KNOCKOUT
2



LR32206

LED/OMNI4/TL/5CCT/HC/G/WFL/DD/UNV/WT

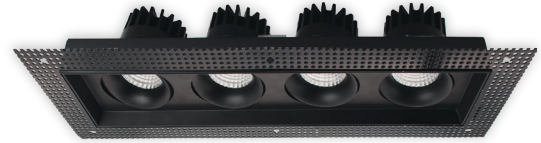


LR32207

LED/OMNI4/TL/5CCT/HC/G/WFL/DD/UNV/BK



LR32206



LR32207

APERTURE	4 HEAD
DISTRIBUTION	ADJUSTABLE
APPLICATION	NEW CONSTRUCTION/TRIMLESS

ELECTRICAL

POWER	60W
INPUT VOLTS	120-277V
INPUT CURRENT	500mA
FREQUENCY	60Hz
DIMMING TYPE	TRIAC/0-10V
DIMMING RANGE	10-100%
FEED WIRE GAUGE	18AWG
BREAKER SPECIFICATION (15A @120V)	19pcs*

*Mathematically estimated value. Actual capacity may vary by breaker type and installation environment.

PHOTOMETRIC

COLOR CCT	2700K/3000K/3500K/4000K/5000K
CRI	90
LUMEN	LR32206: 4000lm LR32207: 4000lm
EFFICACY	66lm/w
BEAM ANGLE	LR32206: 60° LR32207: 60°

CERTIFICATIONS & SAFETY

LR32206	ETL
LR32207	ETL
IP RATING	IP54
WET LOCATION	YES
IC RATED	YES
AIR TIGHT	YES
OPERATING TEMP.	-4°F to 104°F
COST/YR	\$ 7.22
WARRANTY	5 YR

MATERIAL & APPLICATION

HEAT SINK	DIE-CAST ALUMINUM
TRIM	ALUMINUM
LENS	ACRYLIC
CUTOUT	15.27" X 4.25"
MOUNTING TYPE	RECESSED
ROTATION	360°
TILT	15°
AREA OF APPLICATION	RESIDENTIAL, COMMERCIAL
CEILING TYPE	DRYWALL

DRIVER

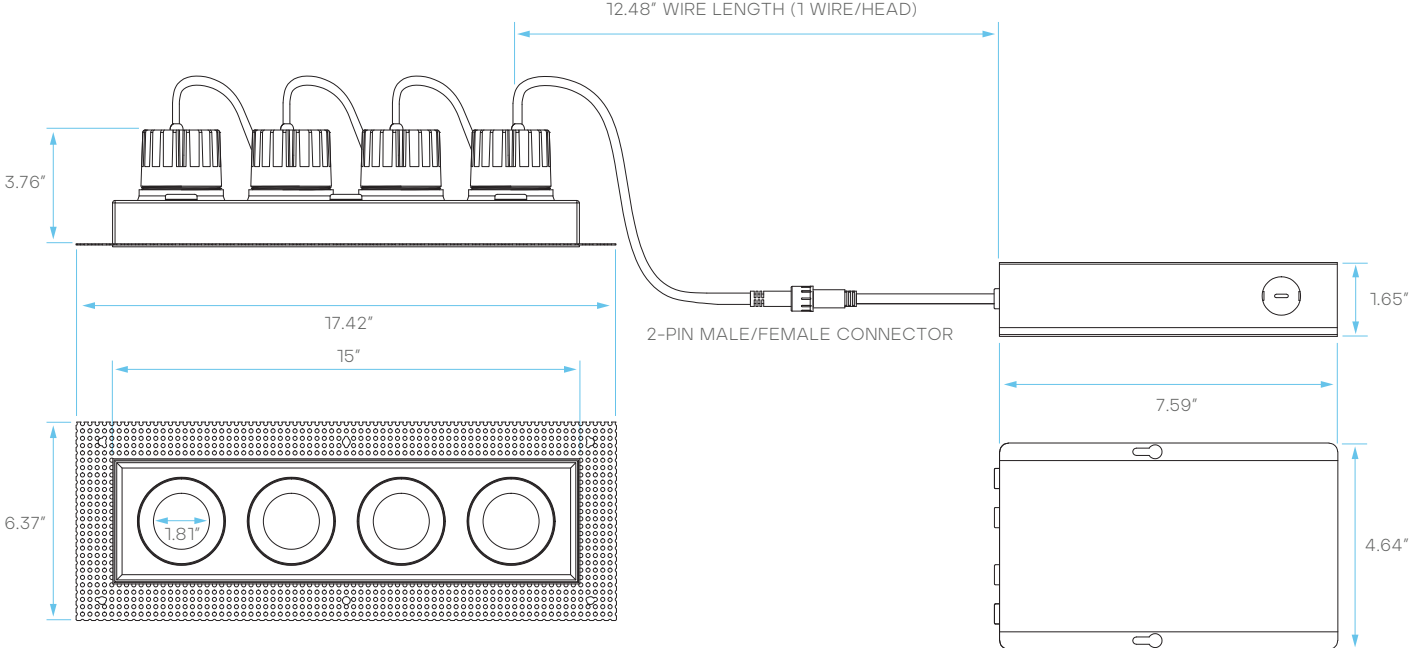
	POWER	INPUT VOLTS	INPUT CURRENT	FREQUENCY	INPUT POWER	OUTPUT VOLTAGE	DIMENSIONS	KNOCKOUTS
INCLUDED DRIVER	60W	120-277V	500mA	50/60Hz	60W max	36V DC	7.59"L X 4.64"W X 1.65"H	2

MODEL	DESCRIPTION	EM POWER	INPUT VOLTS	INPUT CURRENT	FREQUENCY	INPUT POWER	OUTPUT VOLTAGE	RECHARGE TIME	EMERGENCY TIME
LR35126**	LED/EMR/15W/AC/SF/E	15	100-347V	100mA	50/60Hz	12W max	170V DC	24HR	90MINS

*AMBIENT TEMPERATURE: 41°F ~ 122°F
**SOLD SEPARATELY

DIMENSIONS

CUTOUT: 11.73" X 4.25"



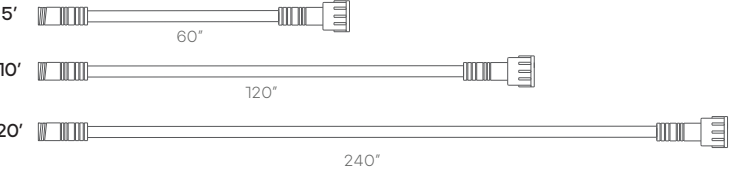
DRIVER DIMENSIONS: 7.59"L X 4.64"W X 1.65"H

WIRE EXTENDER OPTIONS

*SOLD SEPARATELY

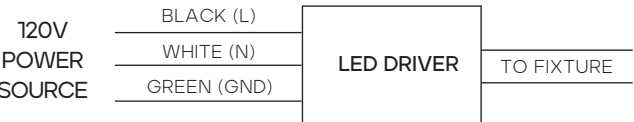


MODEL	TYPE	WIRE GAUGE
LR41050	5' - 3 PIN	22 AWG
LR41052	10' - 3 PIN	22 AWG
LR41054	20' - 3 PIN	22 AWG

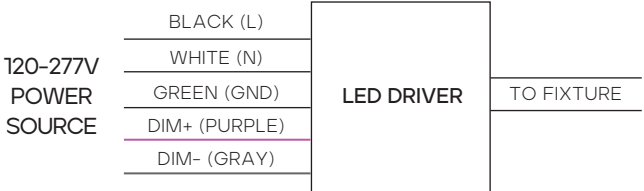


WIRING DIAGRAM

120V



120-277V



SUGGESTED COMPATIBLE DIMMER*

TRIAC DIMMING*

LUTRON	CTCL-153P
	DVCL-153PDH
	DVCL-153P
LEVITON	6672
	6674
PASS & SEYMOUR	HCL453PTCCCV6

0-10V DIMMING*

LUTRON	DIVA - DVTV
	DIVA - NFTV
	NOVA T - NTFTV
LEVITON	ILLUMATECH - IP7
LIGHTOLIER CONTROLS	ZP600FAM120
PHILIPS	SR1200ZTUNV

*Dimmer performance may vary based on load, wiring, and installation conditions. Inclusion on this chart does not guarantee compatibility for every installation, and omission does not indicate incompatibility. Refer to the dimmer manufacturer's installation instructions and verify minimum load requirements to avoid field issues

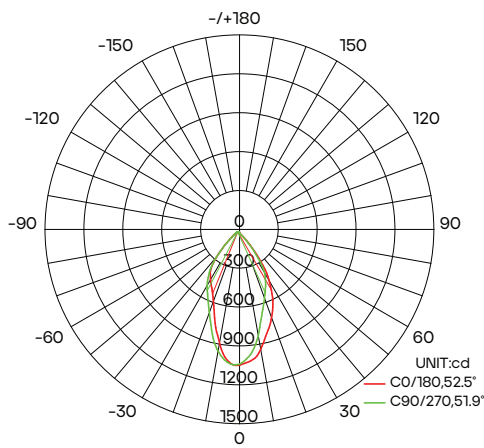
PACKAGING

MODEL	STYLE	INNER BOX DIMENSIONS	MASTER CARTON DIMENSIONS	CASE
LR32200	INNER BOX + MASTER CARTON	6.88" X 6.88" X 4.72"	21.45" X 14.37" X 15.15"	18
LR32201	INNER BOX + MASTER CARTON	6.88" X 6.88" X 4.72"	21.45" X 14.37" X 15.15"	18
LR32202	INNER BOX + MASTER CARTON	10.82" X 6.69" X 6.49"	22.24" X 13.97" X 13.97"	8
LR32203	INNER BOX + MASTER CARTON	10.82" X 6.69" X 6.49"	22.24" X 13.97" X 13.97"	8
LR32204	INNER BOX + MASTER CARTON	14.37" X 6.69" X 6.49"	27.36" X 14.96" X 13.97"	8
LR32205	INNER BOX + MASTER CARTON	14.37" X 6.69" X 6.49"	27.36" X 14.96" X 13.97"	8
LR32206	INNER BOX + MASTER CARTON	18.11" X 6.69" X 6.49"	18.70" X 13.97" X 13.97"	4
LR32207	INNER BOX + MASTER CARTON	18.11" X 6.69" X 6.49"	18.70" X 13.97" X 13.97"	4

LuxiFlow™ PHOTOMETRICS

Luxrite® Luxiflow® tool is for informational purposes only, it is not intended to provide lighting or electrical advice.

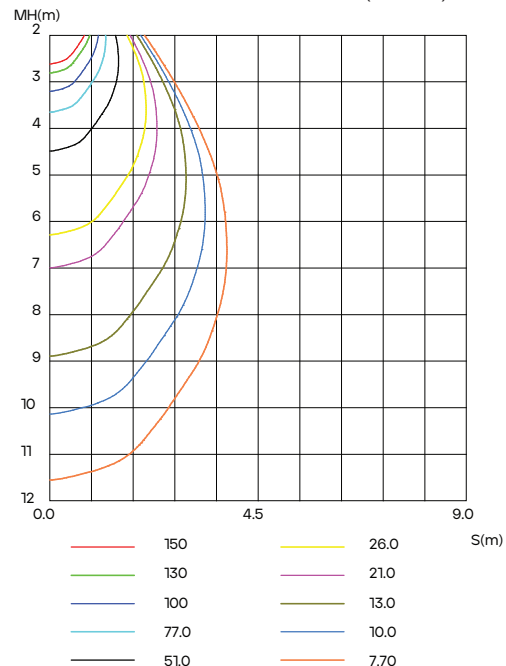
LUMINOUS INTENSITY DISTRIBUTION DIAGRAM



AVERAGE BEAM ANGLE(50%): 52.2 DEG

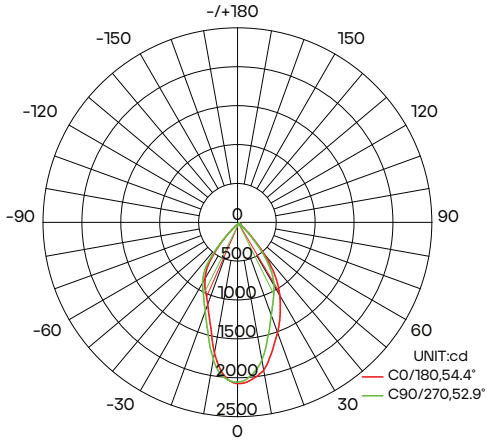
*DIAGRAM SHOWING LR32200 AT 2700K

C0 PLANE ISOLUX DIAGRAM (UNIT:lx)



Luxrite® Luxiflow® tool is for informational purposes only, it is not intended to provide lighting or electrical advise.

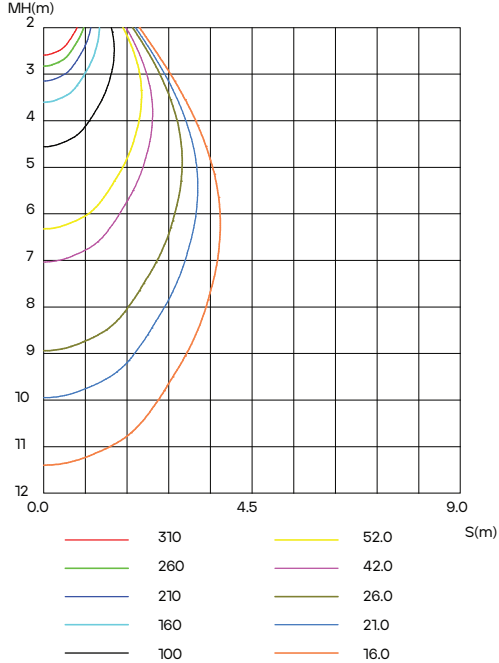
LUMINOUS INTENSITY DISTRIBUTION DIAGRAM



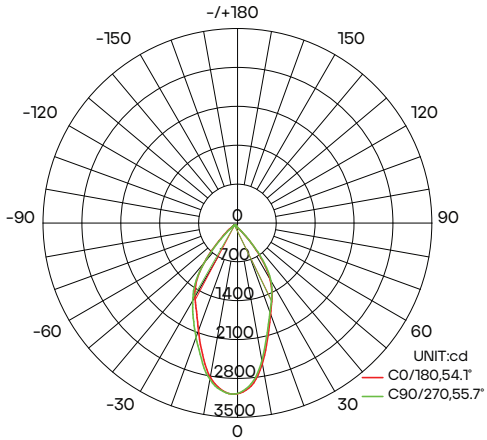
AVERAGE BEAM ANGLE(50%): 53.7 DEG

*DIAGRAM SHOWING LR32202 AT 2700K

C0 PLANE ISOLUX DIAGRAM (UNIT:lx)



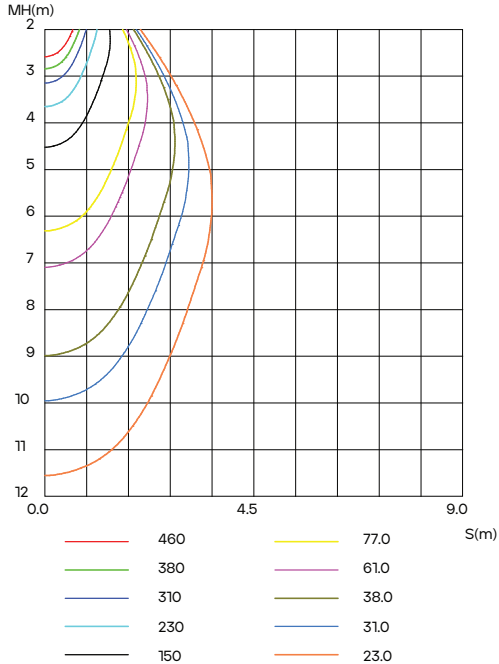
LUMINOUS INTENSITY DISTRIBUTION DIAGRAM



AVERAGE BEAM ANGLE(50%): 54.9 DEG

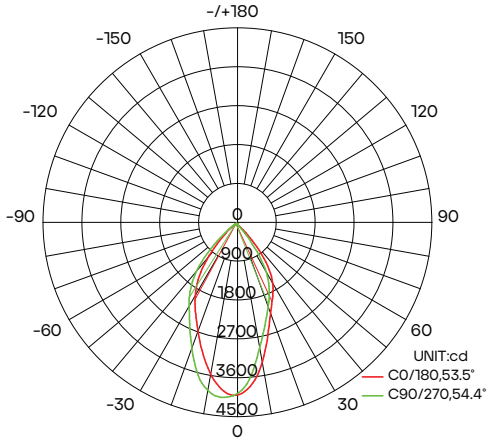
*DIAGRAM SHOWING LR32204 AT 2700K

C0 PLANE ISOLUX DIAGRAM (UNIT:lx)



Luxrite® Luxiflow® tool is for informational purposes only, it is not intended to provide lighting or electrical advice.

LUMINOUS INTENSITY DISTRIBUTION DIAGRAM



AVERAGE BEAM ANGLE(50%): 53.9 DEG

*DIAGRAM SHOWING LR32206 AT 2700K

C0 PLANE ISOLUX DIAGRAM (UNIT:lx)

