



LED EDGE-LIT CANOPY WITH Q-BASE

► **DESIGN** - LED EDGE-LIT CANOPY WITH Q-BASE has a built-in motion sensor base, allowing you to install the microwave motion or PIR sensor. Die-cast aluminum housing with excellent heat dissipation along with an anti-glare PC lens provide many years of use. It is designed to operate on 120-277V circuits with a 0-10V dimmable driver.

► **COLOR AND POWER SELECTABLE** - You can choose either a 3,000K warm white, 4,000K cool white or 5,000K daylight color temperature, and change the power with a simple switch.

► **SURGE PROTECTION** - 5kV protects the fixture from voltage spikes and current surges.

► **INSTALLATION** - The fixture is Wet Locations rated and can be either surface mounted or pole mounted. Perfect commercial or industrial solution for parking garages, gas stations, stairwells, passageways, underpasses, and many other applications.

► **ADVANTAGES** - With calculated lifespan up to 149,000 hours, these fixtures are made to last decades under normal operation! ASD provides a 5-year limited warranty along with UL and DLC Premium certifications to guarantee top quality products and safety!

| | |
|----------------|--|
| Catalog number | |
| Notes | |
| Type | |



Finish: White Black

| Model | Watts | Voltage | Dimmable | Lumens | CCT | Finish | Dimensions (LxWxH) |
|---------------------------|--|-----------|----------|-----------------|----------------------------|--------|------------------------------|
| CAN09S | | | | | | | |
| ASD-CAN09S-A70WH | 40/60/70W | 120-277 V | 0-10 V | up to 9,763 lm | 3CCT (3,000/4,000/5,000 K) | White | 10-1/16" x 10-1/16" x 2-3/4" |
| ASD-CAN09S-A70BK | 40/60/70W | 120-277 V | 0-10 V | up to 9,763 lm | 3CCT (3,000/4,000/5,000 K) | Black | 10-1/16" x 10-1/16" x 2-3/4" |
| ASD-CAN09S-A100WH | 60/70/100W | 120-277 V | 0-10 V | up to 14,448 lm | 3CCT (3,000/4,000/5,000 K) | White | 10-1/16" x 10-1/16" x 2-3/4" |
| ASD-CAN09S-A100BK | 60/70/100W | 120-277 V | 0-10 V | up to 14,448 lm | 3CCT (3,000/4,000/5,000 K) | Black | 10-1/16" x 10-1/16" x 2-3/4" |
| SENSORS AND REMOTE | | | | | | | |
| ASD-09MW-WH | Microwave motion sensor 3pin white | | | | | | 2-1/8" x 2-1/8" x 1-5/16" |
| ASD-09MW-BK | Microwave motion sensor 3pin black | | | | | | 2-1/8" x 2-1/8" x 1-5/16" |
| ASD-09IR-WH | Infrared motion sensor 3pin white | | | | | | 2-1/8" x 2-1/8" x 1-11/16" |
| ASD-09IR-BK | Infrared motion sensor 3pin black | | | | | | 2-1/8" x 2-1/8" x 1-11/16" |
| ASD-06RC | Remote control for motion sensor | | | | | | 5-11/16" x 1-3/4" x 13/16" |
| ASD-09MW-NLS-WH | Microwave motion sensor smart 3pin white | | | | | | 2-1/8" x 2-1/8" x 1-3/8" |
| ASD-09IR-NLS-WH | Infrared motion sensor smart 3pin white | | | | | | 2-1/8" x 2-1/8" x 1-11/16" |
| ASD-06RC-NLS | Remote control for motion sensor smart | | | | | | 5-11/16" x 1-3/4" x 13/16" |

For detailed luminous flux information please refer to Annex 1.

ANNEX 1

| Model | Watts | 3,000 K | 4,000 K | 5,000 K |
|--|-------|-----------|-----------|-----------|
| ASD-CAN09S-A70WH ASD-CAN09S-A70BK | 40W | 6,192 lm | 6,554 lm | 6,346 lm |
| | 60W | 8,733 lm | 9,523 lm | 9,647 lm |
| | 70W | 8,771 lm | 9,589 lm | 9,763 lm |
| ASD-CAN09S-A100WH ASD-CAN09S-A100BK | 60W | 8,786 lm | 9,278 lm | 9,258 lm |
| | 70W | 10,056 lm | 10,689 lm | 10,573 lm |
| | 100W | 13,318 lm | 14,448 lm | 14,363 lm |

For most up-to-date spec sheets please refer to asd-lighting.com



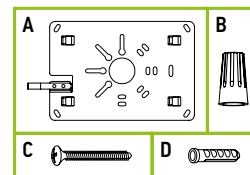
LED EDGE-LIT CANOPY WITH Q-BASE

PRODUCT SPECIFICATIONS:

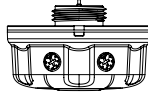
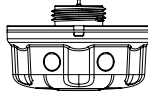
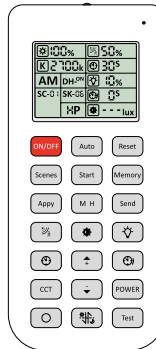
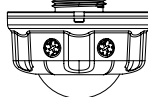
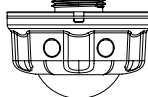
| Construction & Materials | | | |
|--|---|------------------|--|
| Lens | PC | | |
| Housing | Aluminum | | |
| Finish | White, Black | | |
| Weight | ASD-CAN09S-A70WH | 5.1 lbs (2.3 kg) | |
| | ASD-CAN09S-A70BK | | |
| | ASD-CAN09S-A100WH | 5.3 lbs (2.4 kg) | |
| | ASD-CAN09S-A100BK | | |
| Environmental system | | | |
| Work environment | Suitable for Wet Locations, IP65 | | |
| Operating temperature | -22°F to 122°F (-30°C to 50°C) | | |
| L-70 Life | R > 54,000 hrs; C > 149,000 hrs | | |
| Optical system | | | |
| Color temperature | 3 CCT switch (3,000/4,000K/5,000 K), 5,000 K by default | | |
| CRI | > 80 | | |
| Electrical system | | | |
| Input voltage | 120-277 V | | |
| Max input current | ASD-CAN09S-A70WH | 0.7 A | |
| | ASD-CAN09S-A70BK | | |
| | ASD-CAN09S-A100WH | 1 A | |
| | ASD-CAN09S-A100BK | | |
| Inrush current (Action time) | ASD-CAN09S-A70WH | 120 A (4 S) | |
| | ASD-CAN09S-A70BK | | |
| | ASD-CAN09S-A100WH | 50 A (4 S) | |
| | ASD-CAN09S-A100BK | | |
| Off state power | 0W | | |
| Power consumption | ASD-CAN09S-A70WH | 40/60/70W | |
| | ASD-CAN09S-A70BK | | |
| | ASD-CAN09S-A100WH | 60/70/100W | |
| | ASD-CAN09S-A100BK | | |
| Power factor | > 0.9 | | |
| Output voltage | ASD-CAN09S-A70WH | 130 V | |
| | ASD-CAN09S-A70BK | | |
| | ASD-CAN09S-A100WH | 260 V | |
| | ASD-CAN09S-A100BK | | |
| Max output current | ASD-CAN09S-A70WH | 0.55 A | |
| | ASD-CAN09S-A70BK | | |
| | ASD-CAN09S-A100WH | 0.43 A | |
| | ASD-CAN09S-A100BK | | |
| Surge protection DM/CM | ASD-CAN09S-A70WH | 4 kV / 5 kV | |
| | ASD-CAN09S-A70BK | | |
| | ASD-CAN09S-A100WH | 6 kV / 6 kV | |
| | ASD-CAN09S-A100BK | | |
| Regular and voluntary certifications | | | |
| 5-year limited warranty | | | |
| DesignLights Consortium (DLC) listed (Classification: Premium) | | | |
| Primary use: Parking garage luminaires | | | |
| UL certified | | | |

PACKAGE CONTENTS:

| Description | Q-ty |
|---------------------------------|------|
| LED Edge-Lit Canopy with Q-Base | 1 |
| Mounting plate (A) | 1 |
| Wire nut (B) | 3 |
| Self-tapping screw (C) | 4 |
| Anchor (D) | 4 |
| Box | 1 |



ACCESSORIES (sold separately):

| | | |
|--|--|---|
| Microwave motion sensor 3pin ASD-09MW  | Microwave motion sensor smart 3pin ASD-09MW-NLS  | Remote control for motion sensor ASD-06RC for motion sensor smart ASD-06RC-NLS  |
| Infrared motion sensor 3pin ASD-09IR  | Infrared motion sensor smart 3pin ASD-09IR-NLS  | |

ACCESSORY COMPATIBILITY LIST:

| Models | Accessories | Microwave motion sensor 3pin | Infrared motion sensor 3pin | Microwave motion sensor smart 3pin | Infrared motion sensor smart 3pin |
|------------|-------------|------------------------------|-----------------------------|------------------------------------|------------------------------------|
| | | ASD-09MW-WH ASD-09MW-BK | ASD-09IR-WH ASD-09IR-BK | ASD-09MW-NLS-WH ASD-09MW-NLS-BK | ASD-09IR-NLS-WH ASD-09IR-NLS-BK |
| ASD-CAN07A | 70W | • | • | • | • |
| | 100W | • | • | • | • |

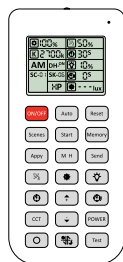
For most up-to-date spec sheets please refer to asd-lighting.com



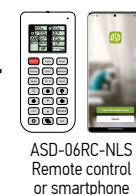
LED EDGE-LIT CANOPY WITH Q-BASE

MOTION SENSOR INFORMATION

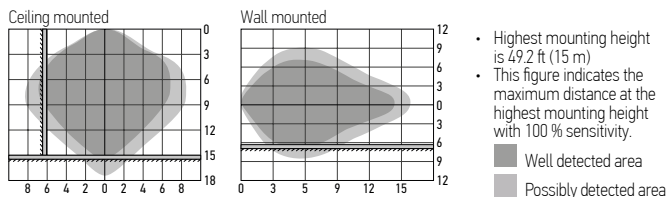
REMOTE CONTROL **ASD-06RC** **ASD-06RC-NLS** sold separately:



| Button | Remarks | Button | Remarks | Button | Remarks |
|---------------|--|-------------|---|--------------|---|
| ON/OFF | ON/OFF Turn the sensor ON/OFF. | M H | Mounting height Adjust detection area/sensitivity levels according to real installation situations, higher or lower. | ↑ | Up The main functional buttons to adjust the factors to desired level. |
| Auto | Auto Enter "sensor mode" and perform previous settings. | Send | Send Memorize and send out the previous setting of individual parameters. | ↓ | Down Press + - button to dim light directly in non-detection mode. |
| Reset | Reset Enter "sensor mode" and perform the default settings. | ☞ | Detection range Also known as "sensitivity", 100 % means the highest sensitivity and longest distance. Use this button and the +- buttons to adjust. | CCT | CCT Selectable Not applicable to this product. |
| Scenes | Scenes Shows current settings saved in remote. | ☞ | Daylight sensor The preset lux level at which motion will be detected. Use this button and the +- buttons to adjust. | POWER | Power Adjust brightness in both ON/OFF mode & sensor mode, minimum 10%, max 100%, each time this button is pressed it changes by 5%. |
| Start | Start Press this to begin scene setup. | ☞ | Stand-by dimming After hold time, the light will dim from 100 % to optional standby dimming levels. Use this button and the +- buttons to adjust. | ○ | Reserved Button Not applicable to this product. |
| Memory | Memory Saves the scene settings. | ☞ | Hold time The period that light will stay illuminated 100 % after no motion is detected. Use this button and the +- buttons to adjust. | ☞ | Daylight Harvesting Daylight harvesting function enabled or disabled. |
| Apply | Apply Applies current scene settings to the fixture. | ☞ | Stand-by period The period after holdtime, during which the light keeps standby dimming level. Use this button and the +- buttons to adjust. | Test | Test button Press this button to test the sensor; it will temporarily change the hold time to 2s. This setting cannot be saved. |



ASD-09MW, ASD-09MW-NLS:



User notes:

- Microwaves can penetrate walls or glass thinner than 0.8" but will be impaired if thicker than 0.8".
- The driver voltage shall be stable and float within 10 %.
- Detection area will be affected by speed of motion, mounting height and movement volume.
- Conduct testing with adequate ambient lighting for best results.
- Dimming performance differs when connected to different drivers; if the driver can't completely turn OFF, sensor can't either.
- The first time powered ON sensor, light will be ON 100% for about 10S then dims to standby level or OFF.

Installation precautions:

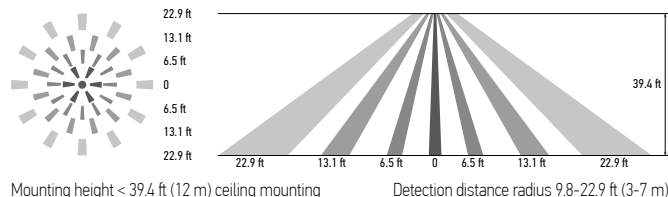
- Suitable for ceiling mount installation, adjust sensitivity properly if it's installed on side-wall because it gets more sensitive.
- Make sure the microwave module is completely exposed.
- The detection surface of the sensor module should be installed facing the detection area.

Application environment:

- Suitable for indoor application, half/completely outdoor environment conditions might trigger the sensor.
- Shall be mounted securely, to avoid any false triggers caused by movement of the fixture itself.
- Keep the sensor module away from AC input and DC output to avoid high/low frequency signal interference.

| Specifications | Models: ASD-09MW, ASD-09MW-NLS | Models: ASD-09IR, ASD-09IR-NLS |
|-----------------------|--|--------------------------------|
| Operating voltage | 10-15 V | |
| Operating current | < 30 mA | < 15 mA |
| Detection area | 25 %/50 %/75 %/100 % | |
| Hold time | Remote control: 5 s/30 s/1 min/3 min/5 min/10 min/20 min/30 min Built-in switch: 5 s/1 min/5 min/10 min | |
| Daylight threshold | 2 lux (0.2 fc)/10 lux (0.9 fc)/30 lux (2.8 fc)/50 lux (4.7 fc)/80 lux (7.4 fc)/120 lux (11.2 fc)/200 lux (18.6 fc)/250 lux (23.2 fc)/300 lux (27.9 fc)/350 lux (32.5 fc)/400 lux (37.2 fc)/disable | |
| Standby period | 0 s/10 s/30 s/1 min/5 min/10 min/30 min/60 min/+ ∞ | |
| Standby dimming level | Remote control: 10 %/20 %/30 %/50 % Built-in switch: 0 %/10 %/30 %/50 % | |
| Mounting height | max 49.2 ft (15 m) | ≤ 39.4 ft (12 m) |
| Detection range | ≥ 9 ft (3 m) | |
| Operating frequency | 5.8 GHz ± 75 GHz | - |
| Transmitting power | < 0.3 mW | - |

ASD-09IR, ASD-09IR-NLS:



User notes:

- The driver voltage shall be stable and float within 10%.
- Detection area options may NOT working obviously because it works depends on fresnel lens, it's physically defined.
- Detection distance performance works better when moving parallel to the sensor as opposed to towards it.
- Conduct testing with adequate ambient lighting for best results.
- Dimming performance differs when connected to different drivers; if the driver can't completely turn OFF, sensor can't either.
- The first time powering ON the sensor, light will be ON 100% for about 45S then dims to standby level or OFF.

Installation precautions:

- PIR sensor can't be placed inside any material, fresnel lens must be completely exposed in air.
- Fresnel lens of the PIR sensor must be lower than light fixture.
- Suitable for ceiling mount installation, adjust sensitivity properly if it's installed on a wall because it will become more sensitive.

Application environment:

- Suitable for indoor application, half/completely outdoor environment conditions might trigger the sensor.
- Not suitable environment if there's sudden changed temperature of airflow for PIR sensor.
- Not suitable environment if there's shelves between the sensor and target area.
- Shall be mounted securely, to avoid any false triggers caused by movement of the fixture itself.

DEFAULT SETTING:

| Specifications | Value |
|------------------------|---------|
| Detection area | 100 % |
| Hold time | 10 min |
| Daylight threshold | Disable |
| Stand-by period | 0 s |
| Stand-by dimming level | 10 % |

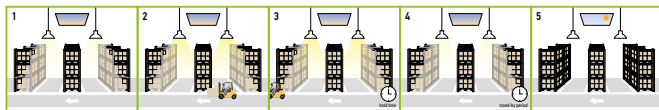
For most up-to-date spec sheets please refer to asd-lighting.com



LED EDGE-LIT CANOPY WITH Q-BASE

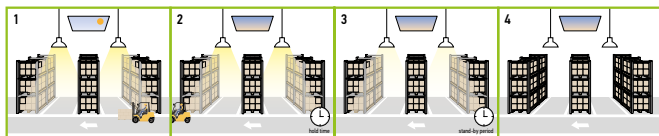
WITH DUSK/DAWN FUNCTION:

1. With insufficient ambient brightness, sensor turns on light and keeps it at standby dimming level even if there is no motion or presence.
2. When sensor detects motion or presence it will bring the light level up to 100 %.
3. After motion is no longer detected, fixture remains at 100 % for hold time.
4. After pre-set hold time period it will dim to standby dimming level again and always keep it.
5. With sufficient ambient brightness, sensor will turn OFF light automatically.



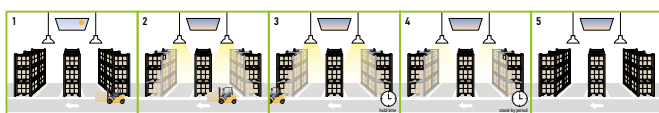
WITH DAYLIGHT DISABLED:

1. Sensor turns ON light when motion is detected.
2. Light will stay on after detecting motion for the desired hold time.
3. Sensor dims light to standby dimming level after hold time if there is still no motion.
4. Sensor turns OFF light after standby period.



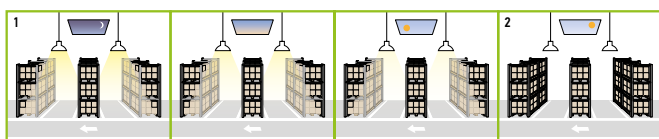
WITH DAYLIGHT THRESHOLD:

1. With sufficient daylight, the light remains OFF even after motion is detected.
2. With insufficient daylight, the sensor turns light ON when motion is detected.
3. After there's no motion detected, the sensor keeps light ON 100 % for holdtime.
4. After holdtime, sensor dims light to standby dimming level for standby period. If the standby period has been set as 0s, sensor turns light OFF automatically after holdtime.
5. The sensor turns OFF light automatically after the standby period when there's no motion detected.



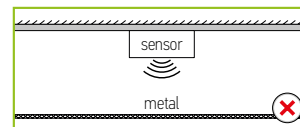
DAYLIGHT HARVESTING:

1. When ambient brightness is lower than preset lux level, sensor will turn on light automatically and keep dimming according to the change of the ambient brightness. As it gets darker outside the fixtures will brighten, and as it gets brighter outside the fixtures will dim down.
2. When the ambient brightness exceeds the preset lux level, the light will turn OFF.

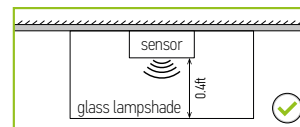


MICROWAVE MOTION SENSOR:

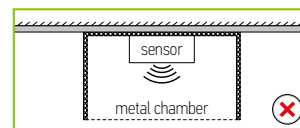
To avoid blocking the microwave emission, the microwave sensor can not be covered with metal materials, be sprayed with a coating of metal components, or have attached metal material or stickers etc.



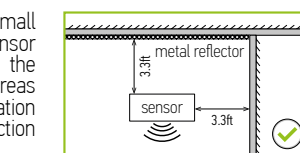
The distance between the antenna and the glass (dielectric material) should be no less than 0.4 ft when the sensor is within the glass lampshade. Otherwise, the microwave motion sensor will not penetrate the glass easily.



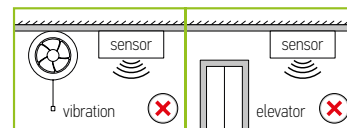
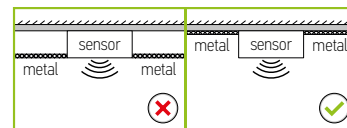
Avoid placing the sensor inside a metal chamber, this may cause a mis-trigger.



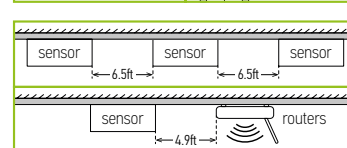
The sensor should not be placed in a small confined space. To avoid increasing the sensor detection range or abnormal operation, the sensor should be kept away from large areas of metal and glass reflectors (separation distance at least 3.3 ft). Reduce the detection area setting.



To avoid affecting the microwave signal transmission, the microwave antenna should be higher than the surrounding metal surface.



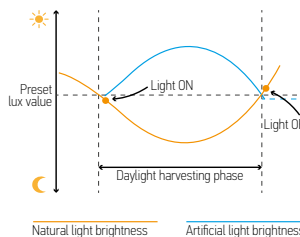
Any vibration or movement may trigger the sensor. Ensure the sensor is far from any constant movement.



There must be at least 6.5ft between microwave sensors; There must be at least 4.9ft between the sensor and other wireless devices such as routers to avoid possible radio interference.

DAYLIGHT HARVESTING SETTING:

1. Adjust "daylight" value higher than 50lux.
2. Preset "standby period" 0S
3. Press MW/PIR button 3 times until the MW/PIR icons are both blinking on LCD screen, daylight harvesting function enabled. (With BLE version, press DH button, daylight harvesting function enabled).





LED EDGE-LIT CANOPY WITH Q-BASE

INSTALLATION GUIDE

IMPORTANT SAFETY INFORMATION:

Please read all the instructions below before installation.

- ▶ Make sure that the supply voltage corresponds to the rated product voltage.
- ▶ The product must be installed by a qualified electrician in accordance with the National Electrical Code and corresponding local codes.
- ▶ If the product is damaged, do not use it.

⚠ WARNING

RISK OF PERSONAL INJURY – READ and follow all WARNINGS and installation instructions. Keep or give to the owner for future reference.

Risk of cuts: Wear gloves to prevent cuts or abrasions when removing from carton, handling, installing, and maintaining this product.

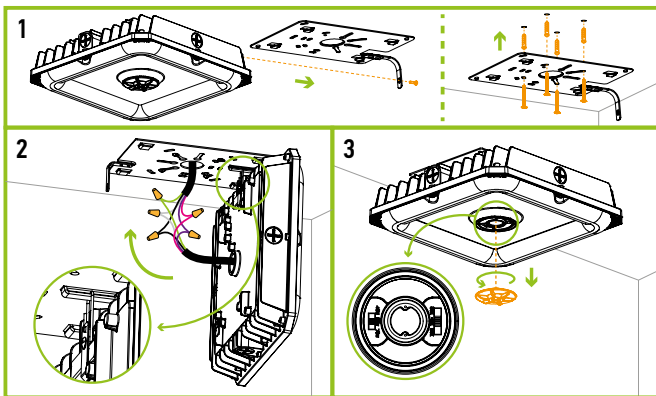
Risk of electric shock: This product must be installed in accordance with the applicable installation code by a person familiar with the construction and operation of the product and the hazards involved.

Risk of Fire: Minimum 194°F supply conductors. Consult a qualified electrician to ensure correct branch circuit conductor.

ASD® assumes no responsibility for claims arising out of improper or careless installation or handling of this product.

SURFACE MOUNT WITH A MOUNTING PLATE:

1. Remove the securing screw out of the mounting plate, detach the mounting plate from the fixture housing and secure the plate to a j-box on the ceiling using anchors and self-tapping screws.
2. Use hanger on the mounting plate to hold the fixture in place and connect the wires: Black to Black, White to White, Green to Green, Dim+ to Violet, Dim- to Pink and secure connection to the Junction box in the ceiling.
3. Slide the fixture into the mounting plate clamps and secure it with a screw. Adjust color temperature and power (if needed) by unscrewing the cap in the middle of the fixture and set switches to needed values.



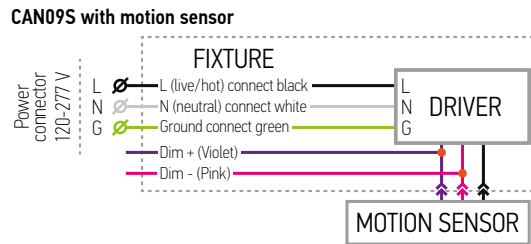
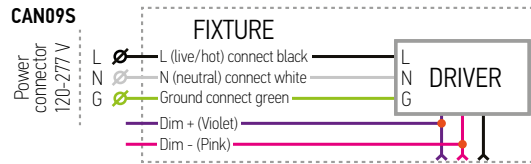
ASD NLS APP DOWNLOAD:

Android

IOS



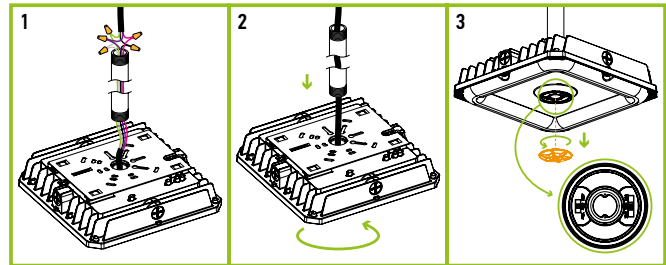
ELECTRICAL SCHEMATIC DIAGRAM:



* The regular voltage 120-277 V fixtures can be alternatively powered without neutral by two-phase circuit with phase-to-phase voltage of 208 V (L1-120 V & L2-120 V).
WARNING: Phase-to-phase voltage should be less than 277 V (160 V per each phase) and more than 120 V (70 V per each phase)! Do not confuse Regular Voltage fixtures of 120-277 V with High Voltage ones of 277-480 V!

POLE MOUNTING INSTALLATION:

1. Thread the wires into the pipe and connect them with terminal caps: Black to Black, White to White, Green to Green, Dim+ to Violet, Dim- to Pink.
2. Screw the pipe into the fixture. Use NPT3/4" pipe.
3. Adjust color temperature and power (if needed) by unscrewing the cap in the middle of the fixture and set switches to needed values.

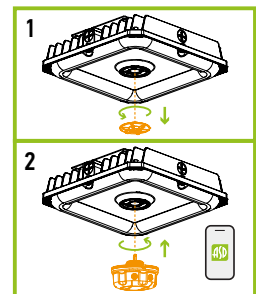


MOTION SENSOR INSTALLATION

ASD-09Mw ASD-09Mw-NLS
 ASD-09IR ASD-09IR-NLS

sold separately:

1. Unscrew the microwave sensor base cap.
2. Insert and twist the sensor until it is tight on the base surface. FOR ASD-09-NLS sensors download ASD NLS APP using QR codes and add the fixture to it according to the manual.



For ASD NLS sensors please download [link link](#) or QR-code below.



For most up-to-date spec sheets please refer to asd-lighting.com



LED EDGE-LIT CANOPY WITH Q-BASE

ORDERING INFORMATION

| Model | UPC | Pcs. per carton | Carton size | Carton weight | GTIN 14 |
|-------------------|--------------|-----------------|---------------------|---------------|----------------|
| ASD-CAN09S-A70WH | 810128113397 | 4 | 17.3" x 12" x 12.2" | 23.6 lbs | 10810128113394 |
| ASD-CAN09S-A70BK | 810128113380 | 4 | 17.3" x 12" x 12.2" | 23.6 lbs | 10810128113387 |
| ASD-CAN09S-A100WH | 810128113410 | 4 | 17.3" x 12" x 12.2" | 24.7 lbs | 10810128113417 |
| ASD-CAN09S-A100BK | 810128113403 | 4 | 17.3" x 12" x 12.2" | 24.7 lbs | 10810128113400 |

ACCESSORIES:

| Model | Description | UPC | Pcs. in middle box | Middle box size | Middle box weight | GTIN 14 in middle box | Pcs. per carton | Carton size | Carton weight | GTIN 14 in carton |
|-----------------|--|--------------|--------------------|---------------------|-------------------|-----------------------|-----------------|----------------------|---------------|-------------------|
| ASD-09MW-WH | Microwave motion sensor 3pin white | 810128113700 | 10 | 5.5" x 2.6" x 11.4" | 1.2 lbs | 20810128113704 | 120 | 17.3" x 11.8" x 11" | 12.1 lbs | 30810128113701 |
| ASD-09MW-BK | Microwave motion sensor 3pin black | 810128113717 | 10 | 5.5" x 2.6" x 11.4" | 1.2 lbs | 20810128113711 | 120 | 17.3" x 11.8" x 11" | 12.1 lbs | 30810128113718 |
| ASD-09IR-WH | Infrared motion sensor 3pin white | 810128113694 | 10 | 5.5" x 2.6" x 11.4" | 1.2 lbs | 20810128113698 | 120 | 17.3" x 11.8" x 11" | 12.1 lbs | 30810128113695 |
| ASD-09IR-BK | Infrared motion sensor 3pin black | 810128114349 | 10 | 5.5" x 2.6" x 11.4" | 1.2 lbs | 20810128114343 | 120 | 17.3" x 11.8" x 11" | 12.1 lbs | 30810128114340 |
| ASD-06RC | Remote control for motion sensor | 810128114370 | 10 | 6.3" x 2.9" x 11.4" | 0.5 lbs | 30810128114371 | 60 | 15.8" x 11.8" x 9.3" | 24.7 lbs | 40810128114378 |
| ASD-09MW-NLS-WH | Microwave motion sensor smart 3pin white | 810128113762 | 10 | 5.5" x 2.6" x 11.4" | 1.2 lbs | 20810128113766 | 120 | 17.3" x 11.8" x 11" | 12.1 lbs | 30810128113763 |
| ASD-09IR-NLS-WH | Infrared motion sensor smart 3pin white | 810128113755 | 10 | 5.5" x 2.6" x 11.4" | 1.2 lbs | 20810128113759 | 120 | 17.3" x 11.8" x 11" | 12.1 lbs | 30810128113756 |
| ASD-06RC-NLS | Remote control for motion sensor smart | 810128114387 | 10 | 6.3" x 2.9" x 11.4" | 0.5 lbs | 20810128114381 | 60 | 15.8" x 11.8" x 9.3" | 24.7 lbs | 30810128114388 |

For most up-to-date spec sheets please refer to asd-lighting.com

ASD LIGHTING CORP

E-mail: orders@asd-lighting.com | Web site: www.asd-lighting.com

