

GTX BUNDLE

Surface & Recessed Mount Extrusion Bundle

The ultimate extrusion compatible with all Trulux tape light, the GTX is the perfect blend of utility and sleek design. Utilize the medium height profile to eliminate most dotting regardless of the light source while providing evenly diffused lighting. Need double the light output but limited on mounting space? No worries, as the GTX allows for side by side tape light installation for tape light widths 12mm or less.

- Surface or recessed mounting capable
- Allows for side by side tape light installation for double the output
- Pre-drilled, countersunk holes
- Frosted, UV & flame resistant lens protects light source while evenly diffusing light
- Anodized aluminum provides excellent heat dissipation
- Field cuttable extrusion and lens
- Compatible with 10-12mm wide tape light with HD connectors

Available Finishes



Anodized Aluminum

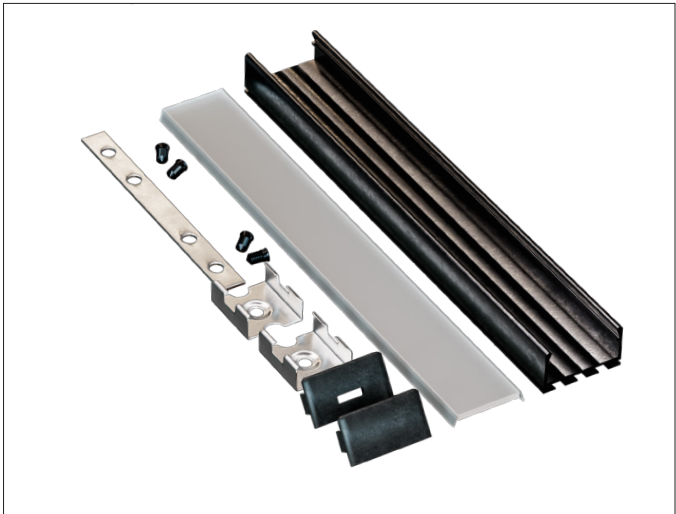
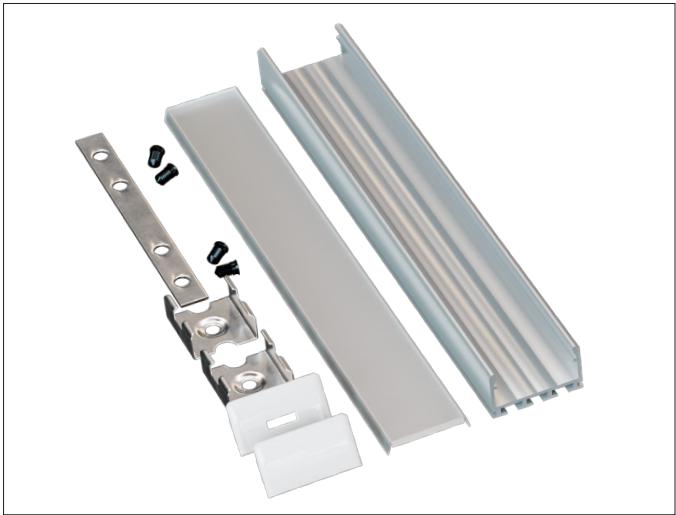


Black

Compatible Tape Light

- Single Color (10mm) + HD Connector
- Tunable CCT (10mm) + HD Connector
- RGBW / RGBTW (12mm) + HD Connector

PROJECT:
TYPE:
LOCATION:
CATALOG NUMBER:



GTX BUNDLE ORDERING INFORMATION

ITEM NUMBER	DESCRIPTION
PE-GTX-2M-BNDL1	2M GTX Single Bundle Includes: (1) 2M GTX Extrusion in Aluminum Finish, (1) 2M High Grade Diffusion Lens, (1) End Cap w/ Hole, (1) End Cap w/o Hole, (6) Mounting Clip Sets, (1) 180° Splicing Strip
PE-GTX-BK-2M-BNDL1	2M GTX BK Single Bundle Includes: (1) 2M GTX Extrusion in Black Finish, (1) 2M High Grade Diffusion Lens, (1) End Cap w/ Hole, (1) End Cap w/o Hole, (6) Mounting Clips, (1) 180° Splicing Strip
PE-GTX-2M-BNDL5	2M GTX Five Unit Bundle Includes: (5) 2M GTX Extrusions in Aluminum Finish, (5) 2M High Grade Diffusion Lenses, (5) End Caps w/ Hole, (5) End Caps w/o Hole, (30) Mounting Clips, (5) 180° Splicing strips

GTX DIMENSIONS

