

# LEDVANCE LUMINAIRES

## DUAL SELECTABLE

## WALL PACK – CUT OFF

### LEDVANCE LUMINAIRE SPECIFICATION DATA

| Catalog #   | Comments |
|-------------|----------|
| Project     |          |
| Type        |          |
| Prepared by |          |

### PERFORMANCE CLASS™



### APPLICATION

The Performance Class Dual Selectable Cut Off Wall Pack boasts both wattage and CCT selectability to cover all your needs. It keeps the same form factor as the old technology for an easy LED upgrade without all the patchwork. With 12 different lumen packages in only 4 SKUs, this full cut off Wall Pack has all your projects covered. It also comes with an integrated photocell and offers plug and play field installable sensors.

### BENEFITS & FEATURES

- Up to 150 LPW
- Selectable color temperature: 3000K/4000K/5000K and the exclusive 1800K/2200K/2700K
- CRI>80
- Selectable wattage and lumens:
  - 20/30/35W | 3,000/4,500/5,250 lm
  - 40/50/60W | 6,000/7,500/9,000 lm
  - 65/80/100W | 9,750/12,000/15,000 lm
  - 120/130/150W | 18,000/19,500/22,500 lm
- Type III full cut off distribution
- DLC 5.1 Premium Listing assures high energy efficiency and qualifies this product for utility rebates
- Field installable motion/daylight sensor
- Integrated photocell
- UV stabilized polycarbonate lenses, vandal resistant
- Emergency Battery Backup options



LEDLUM197R3 6-24

## ELECTRICAL

- 120-347 VAC
- Power Factor > 0.9
- THD < 20%
- Dimmable 0-10V
- Surge protection 4 kV

## RATED LIFE

- 100,000 hours ( $L_{70}$ )  
@ 25°C ambient

## CERTIFICATIONS & LISTINGS

- cULus listed to UL1598 standards
- RoHs
- FCC
- IP65, wet location rated
- DLC 5.1 Premium
- Dark Sky compliant  
(when used at <3000K)

## OPERATING TEMPERATURE

- -40°F to +122°F (-40°C to +50°C)
- EMBB: +41°F to +122°F (+5°C to +50°C)

## WARRANTY

- 5 year
- NLB Trusted Warranty Program

## INSTALLATION

- Wall mount

## ORDERING GUIDE

| WALPAKC                       | 9A                    | SXXX   | XXX                              | D                    | 8            | SCX  | BZ             | X                              |
|-------------------------------|-----------------------|--|----------------------------------|----------------------|--------------|--|----------------|--------------------------------|
| PRODUCT NAME                  | GENERATION            | WATTAGE  | VOLTAGE                          | DIMMING              | CRI          | COLOR TEMPERATURE  | COLOR/FINISH   | OPTIONS                        |
| WALPAKC =<br>Wall Pack Cutoff | 9A =<br>Generation 9A | S035 = 20/30/35W<br>S060 = 40/50/60W<br>S100 = 65/80/100W<br>S150 = 120/130/150W | UNH = 120-347V<br>HUV = 277-480V | D = 0-10V<br>Dimming | 80 = >80 CRI | SC15 =<br>1800/2200/2700K<br>SC2 =<br>3000/4000/5000K<br>SC15 =<br>1800/2200/2700K | BZ =<br>Bronze | P = Photocell<br>E = Emergency |

## ORDERING INFORMATION

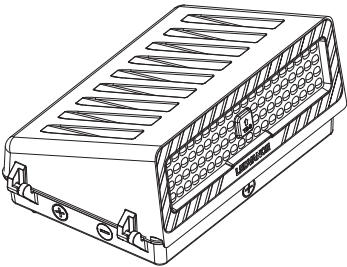
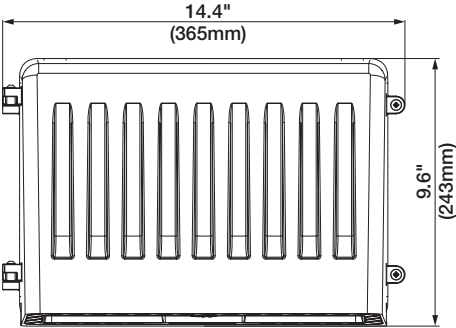
| ITEM # | ORDERING ABBREVIATION     | WATTAGE (W) | INPUT VOLTAGE (V) | DIM. (V) | CRI | COLOR TEMP (CCT) | TOTAL FIXTURE LUMENS (LM) | DLC      | LPW       | OPTIONS                 | BUG RATING |
|--------|---------------------------|-------------|-------------------|----------|-----|------------------|---------------------------|----------|-----------|-------------------------|------------|
| 66180  | WALPAKC9AS035UNHD8SC15BZP | 20/30/35    | 120-347           | 0-10     | >80 | 1800/2200 /2700K | 2600/3900 /4550           | 5.1 Prem | Up to 130 | Photocell               | B2U0G1     |
| 65856  | WALPAKC9AS035UNHD8SC2BZP  | 20/30/35    | 120-347           | 0-10     | >80 | 3000/4000 /5000K | 3000/4500 /5250           | 5.1 Prem | Up to 150 | Photocell               | B2U0G1     |
| 65860  | WALPAKC9AS035UNHD8SC2BZPE | 20/30/35    | 120-347           | 0-10     | >80 | 3000/4000 /5000K | 3000/4500 /5250           | 5.1 Prem | Up to 150 | Photocell/<br>Emergency | B2U0G1     |
| 66181  | WALPAKC9AS060UNHD8SC15BZP | 40/50/60    | 120-347           | 0-10     | >80 | 1800/2200 /2700K | 5200/6500 /7800           | 5.1 Prem | Up to 130 | Photocell               | B2U0G1     |
| 65857  | WALPAKC9AS060UNHD8SC2BZP  | 40/50/60    | 120-347           | 0-10     | >80 | 3000/4000 /5000K | 6000/7500 /9000           | 5.1 Prem | Up to 150 | Photocell               | B2U0G1     |
| 65861  | WALPAKC9AS060UNHD8SC2BZPE | 40/50/60    | 120-347           | 0-10     | >80 | 3000/4000 /5000K | 6000/7500 /9000           | 5.1 Prem | Up to 150 | Photocell/<br>Emergency | B2U0G1     |
| 66182  | WALPAKC9AS100UNHD8SC15BZP | 65/80/100   | 120-347           | 0-10     | >80 | 1800/2200 /2700K | 8450/10,400 /13,000       | 5.1 Prem | Up to 130 | Photocell               | B3U0G2     |
| 65858  | WALPAKC9AS100UNHD8SC2BZP  | 65/80/100   | 120-347           | 0-10     | >80 | 3000/4000 /5000K | 9750/12,000 /15,000       | 5.1 Prem | Up to 150 | Photocell               | B3U0G2     |
| 65868  | WALPAKC9AS100HUV8SC2BZP   | 65/80/100   | 277-480           | 0-10     | >80 | 3000/4000 /5000K | 9750/12,000 /15,000       | 5.1 Prem | Up to 150 | Photocell               | B3U0G2     |
| 66183  | WALPAKC9AS150UNHD8SC15BZP | 120/130/150 | 120-347           | 0-10     | >80 | 1800/2200 /2700K | 15,600/16,900 /19,500     | 5.1 Prem | Up to 130 | Photocell               | B4U0G2     |
| 65859  | WALPAKC9AS150UNHD8SC2BZP  | 120/130/150 | 120-347           | 0-10     | >80 | 3000/4000 /5000K | 18,000/19,500 /22,500     | 5.1 Prem | Up to 150 | Photocell               | B4U0G2     |
| 65869  | WALPAKC9AS150HUV8SC2BZP   | 120/130/150 | 277-480           | 0-10     | >80 | 3000/4000 /5000K | 18,000/19,500 /22,500     | 5.1 Prem | Up to 150 | Photocell               | B4U0G2     |

PHYSICAL INFORMATION

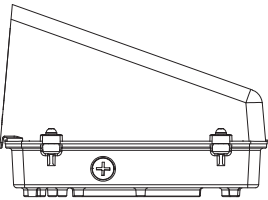
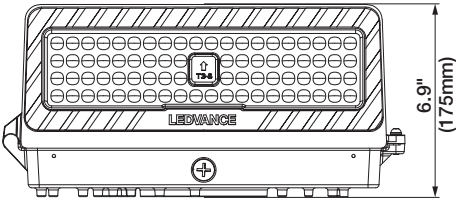
| LUMINAIRE DESCRIPTION | LENGTH IN (MM) | WIDTH IN (MM) | HEIGHT IN (MM) | WEIGHT LB (KG) |
|-----------------------|----------------|---------------|----------------|----------------|
| 35W and 60W           | 14.4 (365)     | 6.9 (175)     | 9.6 (243)      | 6.2 (2.8)      |
| 100W and 150W         | 14.4 (365)     | 9.5 (240)     | 9.6 (243)      | 7.9 (3.6)      |

35W/60W

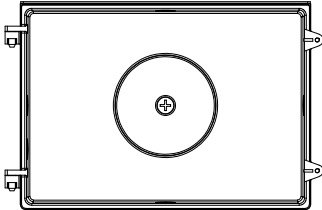
Top View



Front View



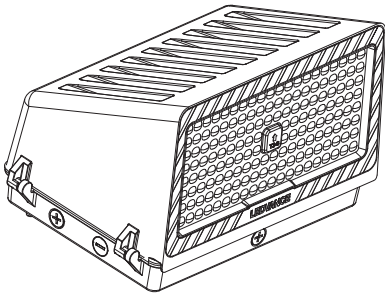
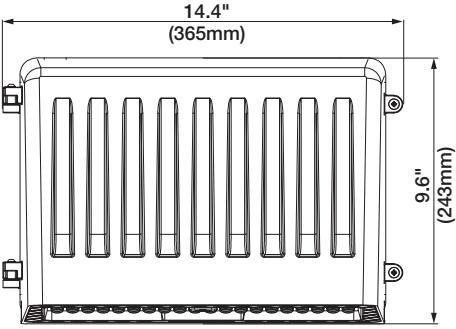
Side View



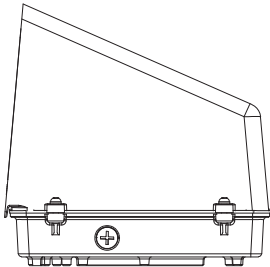
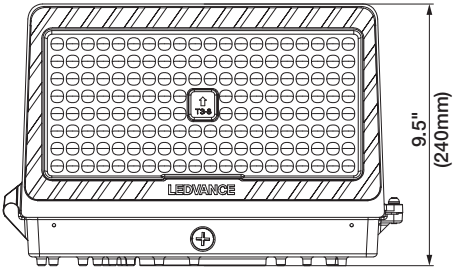
Back View

100W/150W

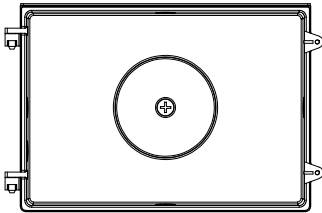
Top View



Front View



Side View

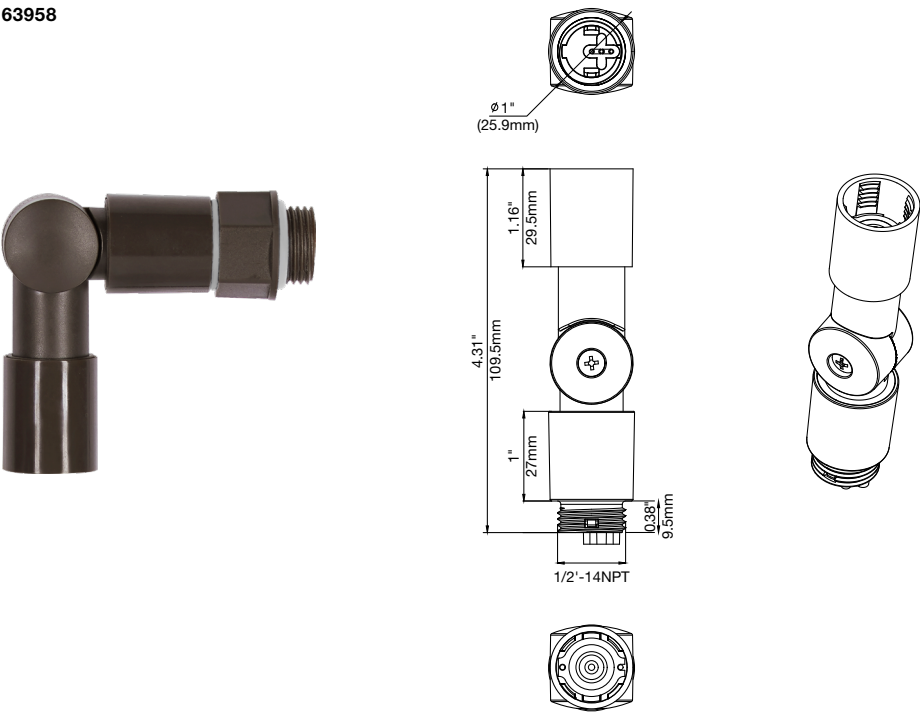


Back View

ACCESSORIES

| ITEM #  | ORDERING ABBREVIATION      | ITEM DESCRIPTION  |
|---------|----------------------------|---|
| Sensors |                            |   |
| 63958   | WALPAKN9ASENSORADAPTOR     | Daylight/Motion Sensor Adaptor  |
| 63748   | AREA/PIRMOTIONDAYSENSOR/BZ | Field installable PIR Motion/Daylight Sensor, IP65, Max. mounting height 39ft, Bronze       |
| 65732   | AREA/MWMOTIONDAYSENSOR/BZ  | Field installable Microwave Motion/Daylight Sensor, IP65, Max. mounting height 49ft, Bronze |
| 62664   | HIGHBAYPIRMOTIONDAYSENSOR2 | Field installable PIR Motion/Daylight Sensor, IP65, Max. mounting height 39ft, White        |
| 65622   | HIGHBAYMOTIONDAYSENSOR     | Field installable Microwave Motion/Daylight Sensor, IP65, Max. mounting height 49ft, White  |
| 65623   | REMOTE/MOTIONDAY/001       | Remote control for Motion/Daylight Sensors – Remote is required to change default settings  |

63958



OPTIONAL MOTION/DAYLIGHT SENSOR DEFAULT SETTINGS:

- Detection Area: 100%
- Hold time – Time fixtures stays at 100% after last motion before dimming: 10 minutes
- Daylight threshold – Light level above which lights will remain off: 50 Lux
- Stand-by period – Time light remains dimmed before shutting off: 60 minutes
- Stand-by Dimming – dimming level of light during the stand-by period: 30%

BATTERY INFORMATION:

- Type: LiFePO4
- Model: 26650 3000mAh 3.2V
- EM Power: 8W
- Discharging time: >90min
- Charging time: 1h



**MOTION SENSOR**  
**Bronze: 63748/65732**  
**White: 62664/65662**

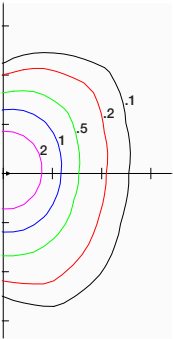


**REMOTE**  
**(65623)**

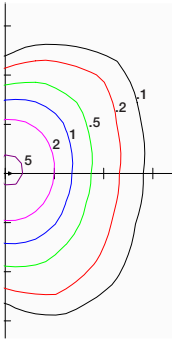
PHOTOMETRIC INFORMATION

HORIZONTAL ISO FOOT-CANDLE PLOT

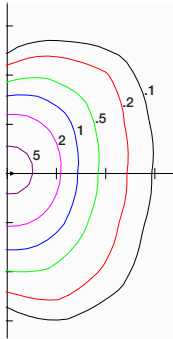
20W Fixture, Mounted at 15' mounting height



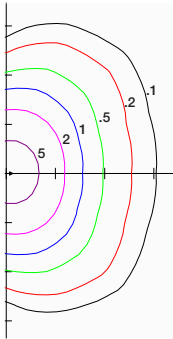
30W Fixture, Mounted at 15' mounting height



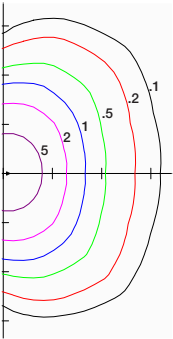
35W Fixture, Mounted at 15' mounting height



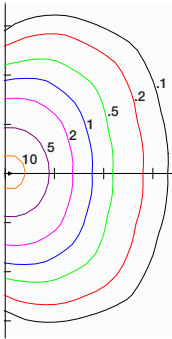
40W Fixture, Mounted at 15' mounting height



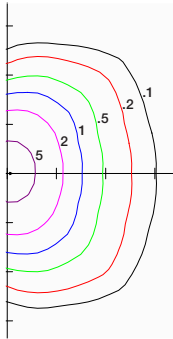
50W Fixture, Mounted at 15' mounting height



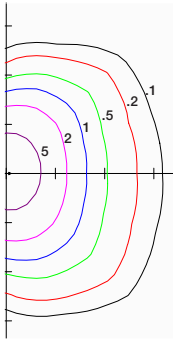
60W Fixture, Mounted at 15' mounting height



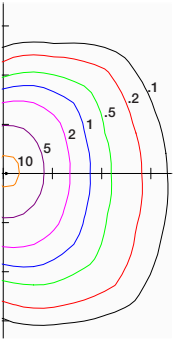
65W Fixture, Mounted at 20' mounting height



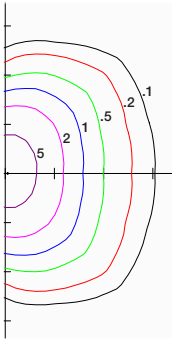
80W Fixture, Mounted at 20' mounting height



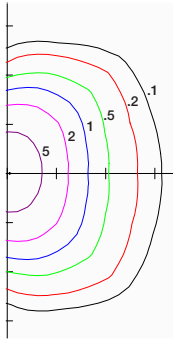
100W Fixture, Mounted at 20' mounting height



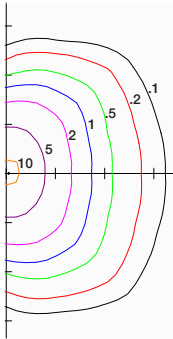
120W Fixture, Mounted at 25' mounting height



130W Fixture, Mounted at 25' mounting height



150W Fixture, Mounted at 25' mounting height



|                      |      |      |      |      |      |      |
|----------------------|------|------|------|------|------|------|
| MOUNTING HEIGHT (FT) | 10   | 12   | 15   | 18   | 20   | 22   |
| MULTIPLIER           | 2.25 | 1.56 | 1    | 0.69 | 0.56 | 0.46 |
| MOUNTING HEIGHT (FT) | 12   | 15   | 18   | 20   | 22   | 25   |
| MULTIPLIER           | 2.78 | 1.78 | 1.23 | 1    | 0.83 | 0.64 |
| MOUNTING HEIGHT (FT) | 15   | 20   | 22   | 25   | 30   | 35   |
| MULTIPLIER           | 2.78 | 1.56 | 1.29 | 1    | 0.69 | 0.51 |

- Multiply the footcandle levels in the diagram according to the desired installation height
- Each tick on the diagram represents a multiple of the mounting height from the fixture



LEDVANCE LLC  
181 Ballardvale Street, Suite 203  
Wilmington, MA 01887 USA  
Phone: 1-800-LIGHTBULB (1-800-544-4828)  
www.ledvanceUS.com

LEDVANCE is a registered trademark.  
All other trademarks are those of their respective owners.  
Specifications subject to change without notice.



SCAN TO FOLLOW US  
ON SOCIAL MEDIA