

PROJECT INFORMATION			
JOB NAME		TYPE	
ORDERING CODE			

BETA 4

4" Cylinder Tunable White



25° - 70° BEAM		
(Note: Specifications are subject to change without notice)		
18mm LUMINUS COB PERFORMANCE DATA		
LED LIGHT ENGINE	NOMINAL DELIVERED LUMENS	SYSTEM WATTAGE
10LM	840LM @35K/95CRI	13W
15LM	1200LM @35K/95CRI	18W
20LM	1520LM @35K/95CRI	23W
Notes	Delivered lumens based on HE40, 3500K (see page 2)	



25° - 70° BEAM		
(Note: Specifications are subject to change without notice)		
14mm NICHIA COB PERFORMANCE DATA		
LED LIGHT ENGINE	NOMINAL DELIVERED LUMENS	SYSTEM WATTAGE
10LM	900LM @35K/80CRI	12W
15LM	1400LM @35K/80CRI	18W
20LM	1850LM @35K/80CRI	24W
Notes	Delivered lumens based on HE40, 3500K (see page 3)	

FEATURES

- Seamless extrusion with powder coated finish for clean aesthetics
- Thermally optimized for longevity
- 25° - 70° beam spread
- UGR < 19
- Micro slim canopy options at 1/4"-3/8" depth plus 1/2" diameter stem.
- Multiple mounting, glare control options, trims and finishes available

DIMMING AND CONTROLS

- Flicker free 0-10V dimming to 1%
- DMX dimming to 1%
- Casambi bluetooth dimming to 1%

CONSTRUCTION

- Extruded aluminum housing
- Lexan™ (PC) Optimal connectivity for wireless control signal
- Machined aluminum canopy
- SVT pendant cord

LED

- Luminus tunable white COB: 95 CRI, R9 > 70: SDCM = 4-step MacAdam Ellipse; Lumen Maintenance: L70> 54,000 hrs
- Nichia tunable white COB: 80 CRI, R9 > 0: SDCM = 3-step MacAdam Ellipse; Lumen Maintenance: L90> 33,000 hrs

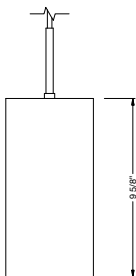
LISTING

- ULus Listed to UL1598 & UL2108; cUL Listed to CSA C22.2 #250.0
- Suitable for dry and damp locations
- Made in the USA - meets the requirements of the Buy American provision within the ARRA
- 5 Year Limited warranty

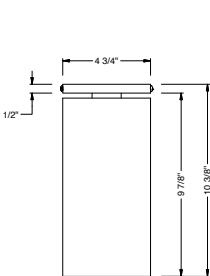
ELECTRICAL

- 120V-277V
- Power factory ≥ 0.9
- 2kV driver input surge protection
- Battery Backups not offered
- Emergency Generator/Inverter/Controls-Override Device supplied by other

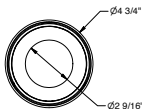
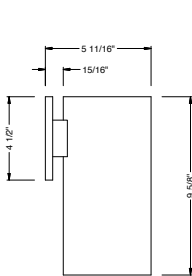
PENDANT



SURFACE MOUNT



WALL MOUNT



alphabet

PROJECT INFORMATION			
JOB NAME		TYPE	
ORDERING CODE			

ORDERING CODE									
SERIES	BETA	BETA							
TYPE	4R	4" round							
LED	TW	tunable white (Luminus)							
DELIVERED LUMENS	10LM	840 lm							
	15LM	1200 lm							
	20LM	1520 lm							
Standard Configuration: 3500K HE40 Calculated Delivered Lumens = [Delivered Lumen Value] x [CCT Multiplier] x [Reflector Multiplier]									
CCT	2765	2700K to 6500K tunable white							
		CCT	2700K	3000K	3500K	4000K	5000K	5700K	6500K
		CCT MULTIPLIER FOR LUMEN OUTPUT	0.91	0.98	1	0.7	1	1.01	1.02
		EML RATIO	0.49	0.57	0.68	0.79	0.96	1.04	1.12
	1840	1800K to 4000K tunable white							
		CCT	1800K	2000K	2400K	2700K	3000K	3500K	4000K
		CCT MULTIPLIER FOR LUMEN OUTPUT	0.67	0.74	0.8	0.85	0.88	0.95	1.01
		EML RATIO	0.21	0.33	0.45	0.53	0.59	0.67	0.73
CRI	95	95 typical, 90 minimum							
OPTIC & LM MULTIPLIER	HE40	40° high efficiency diffused lens						(1.00)	
	HE60	60° high efficiency diffused lens						(0.97)	
	HE70	70° high efficiency diffused lens						(0.93)	
	SS25	25° semi-specular with clear lens						(0.96)	
	SS35	35° semi-specular with clear lens						(0.91)	
	SS55	55° semi-specular with clear lens						(0.91)	
	D40	40° diffused with clear lens						(0.95)	
	D55	55° diffused with clear lens						(0.96)	
WH70	70° brilliant white with clear lens						(0.99)		
ACCESSORY	HCL ¹	honeycomb louver							
	Attached to bezel								
FINISH	BK	black							
	WH	white							
	MC	matte chrome							
BEZEL COLOR	BK	black						(0.98)	
	WH	white						(1.00)	
	MC	matte chrome						(0.99)	
	BZ	bronze						(0.98)	
	WT	wheat						(0.99)	

ORDERING CODE		
MOUNTING OPTIONS SEE PAGE 7	W	wall mount
	S	surface mount
	JCOV-S	conduit junction box cover with knockouts, surface
	P ²	pendant, 108" flexible cord
	RP	rigid pendant 4' stem with swivel stem/canopy
	RP5	rigid pendant 5' stem with swivel stem/canopy
	RP6	rigid pendant 6' stem with swivel stem/canopy
	RP8	rigid pendant 8' stem with swivel stem/canopy
	RP10	rigid pendant 10' stem with swivel stem/canopy
	RPF2	rigid pendant 2' with fixed stem/canopy
	RPF3	rigid pendant 3' with fixed stem/canopy
	RPF4	rigid pendant 4' with fixed stem/canopy
VOLTAGE	RPF6	rigid pendant 6' with fixed stem/canopy
	JCOV-XX ³	conduit junction box cover with knockouts, complete XX code with desired pendant mount
DIMMING	120	120V
	UNV	120V-277V
DIMMING	DIM10 ⁴	0-10V dimming to 1%
	DMX	DMX control dimming to 1%
	CAS	Casambi Bluetooth control with flicker free 1.0% dimming

YOUR COMPLETED ORDERING CODE	
Follow the steps to specify your fixture, example:	
BETA - 4R - TW - 20LM - 2765 - 95 - HE60 - HCL - WH - WH - P - UNV - CAS	

NOTES

1. HCL not available with lens. Multiplier: Delivered lumens (0.80) / Beam spread (0.80).
2. Pendant mount only offered in CAS dimming option.
3. JCOV not available with RP mounting.
4. Requires 2 wall controllers (see wiring diagram).

*EML = equivalent melanopic lux, to calculate EML, multiply the measured photopic lux by the EML Ratio for the given CCT.

*Slim canopy with rigid stem connection shall be used in jurisdictions that DO NOT require light fixtures to freely swing in lateral directions, complying with local and national building codes.

*RP mounting with swivel is recommended to be installed on a 4in square or 4in deep regress 2-1/8" octagonal junction box.

alphabet

PROJECT INFORMATION		
JOB NAME		TYPE
ORDERING CODE		

NICHIA TUNABLE WHITE - ORDERING CODE		
SERIES	BETA	BETA
TYPE	4R	4" round
LED	TW	tunable white (Nichia)
DELIVERED LUMENS	10LM	900 lm
	15LM	1400 lm
	20LM	1850 lm
	Standard Configuration: 3500K HE40 Calculated Delivered Lumens = [Delivered Lumen Value] x [CCT Multiplier] x [Reflector Multiplier]	
CCT	2750	2700K to 5000K tunable white
	CCT	2700K3000K3500K4000K5000K
	CCT MULTIPLIER FOR LUMEN OUTPUT	0.850.880.951.011.02
	EML RATIO	0.430.510.630.690.8
CRI	80	80 CRI
OPTIC & LM MULTIPLIER	HE40	40° high efficiency diffused lens (1.00)
	HE60	60° high efficiency diffused lens (0.97)
	HE70	70° high efficiency diffused lens (0.94)
	SS25	25° semi-specular with clear lens (0.96)
	SS35	35° semi-specular with clear lens (0.93)
	SS55	55° semi-specular with clear lens (0.91)
	D40	40° diffused with clear lens (0.96)
	D55	55° diffused with clear lens (0.96)
ACCESSORY	WH70	70° brilliant white with clear lens (0.98)
	HCL ¹	honeycomb louver
FINISH	Attached to bezel	
	BK	black
	WH	white
	MC	matte chrome
BEZEL COLOR	BK	black (0.98)
	WH	white (1.00)
	MC	matte chrome (0.99)
	BZ	bronze (0.98)
	WT	wheat (0.99)

NICHIA TUNABLE WHITE - ORDERING CODE		
MOUNTING OPTIONS SEE PAGE 7	W	wall mount
	S	surface mount
	JCOV-S	conduit junction box cover with knockouts, surface
	P ²	pendant, 108" flexible cord
	RP	rigid pendant 4' stem with swivel stem/canopy
	RP5	rigid pendant 5' stem with swivel stem/canopy
	RP6	rigid pendant 6' stem with swivel stem/canopy
	RP8	rigid pendant 8' stem with swivel stem/canopy
	RP10	rigid pendant 10' stem with swivel stem/canopy
	RPF2	rigid pendant 2' with fixed stem/canopy
	RPF3	rigid pendant 3' with fixed stem/canopy
	RPF4	rigid pendant 4' with fixed stem/canopy
	RPF6	rigid pendant 6' with fixed stem/canopy
VOLTAGE	JCOV-XX ³	conduit junction box cover with knockouts, complete XX code with desired pendant mount
	120	120V
DIMMING	UNV	120V-277V
	DIM10 ⁴	0-10V dimming to 1%
	DMX	DMX control, dimmable to 1% + Bluetooth commission for setting address
	CAS	Casambi Bluetooth control with flicker free 1.0% dimming

YOUR COMPLETED ORDERING CODE	
Follow the steps to specify your fixture, example:	
BETA - 4R - TW - 20LM - 2750 - 80 - HE60 - HCL - WH - WH - P - UNV - CAS	

NOTES

1. HCL not available with lens. Multiplier: Delivered lumens (0.80) / Beam spread (0.80).
2. Pendant mount only offered in CAS dimming option.
3. JCOV not available with RP mounting.
4. Requires 2 wall controllers (see wiring diagram).

*EML = equivalent melanopic lux, to calculate EML, multiply the measured photopic lux by the EML Ratio for the given CCT.

*Slim canopy with rigid stem connection shall be used in jurisdictions that DO NOT require light fixtures to freely swing in lateral directions, complying with local and national building codes.

*RP mounting with swivel is recommended to be installed on a 4in square or 4in deep regress 2-1/8" octagonal junction box.

alphabet

PROJECT INFORMATION			
JOB NAME		TYPE	
ORDERING CODE			

BEZEL OPTIONS

BEZEL COLORS



OPTICAL OPTIONS

- UGR calculation based on CIE 117-1995; room size: 4H X 8H, reflectance: 70/50/20;
- UGR calculation based on 15LM fixtures.

LUMINUS



OPTIC	BEAM ANGLE	UGR
SS25	26.1	14.2
SS35	34.7	14.5
SS55	57.5	16.8
D40	38.7	15.7
D55	56.8	18.9
WH70	73.5	24.6



OPTIC	BEAM ANGLE	UGR
HE40	43.1	19.5
HE60	60.5	21.2
HE70	70	24.6

NICHIA



OPTIC	BEAM ANGLE	UGR
SS25	22.3	14.7
SS35	30.6	15
SS55	50.3	17.3
D40	34.8	16.2
D55	50.9	19.4
WH70	72.7	25.2



OPTIC	BEAM ANGLE	UGR
HE40	41.9	≤5
HE60	57.6	≤5
HE70	70.5	≤5

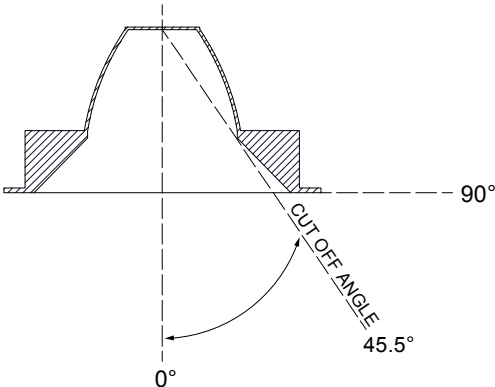
GLARE CONTROL

CUT-OFF ANGLE

Visual comfort is achieved with a lower cut-off angle due to improved glare control. The smaller the cut-off angle, the easier it is on the eye.

Alphabet downlights have been thoughtfully engineered to eliminate glare while still delivering functional illumination.

- Cutoff angle of NL and CL is 45.5 degrees;



PROJECT INFORMATION			
JOB NAME		TYPE	
ORDERING CODE			

PHOTOMETRIC DATA

LUMINUS

HE40
43° HIGH EFFICIENCY DIFFUSED LENS

Throw Distance (ft)	Beam Diameter (ft)
6	4.7
8	6.3
10	7.8
12	9.4
14	11
Illuminance at Center (fc)	
32	
18	
12	
8	
6	
WATTS: 12.4	LPW: 67.9
LUMENS: 842	CCT: 3000K
INTENSITY	
DEGREE	CANDELA
0	1165
5	1119
15	817
25	468
35	242
45	115

HE60
60° HIGH EFFICIENCY DIFFUSED LENS

Throw Distance (ft)	Beam Diameter (ft)
6	6.9
8	9.2
10	11.5
12	13.8
14	16.1
Illuminance at Center (fc)	
21	
12	
7	
5	
4	
WATTS: 12.4	LPW: 65.6
LUMENS: 814	CCT: 3000K
INTENSITY	
DEGREE	CANDELA
0	743
5	729
15	627
25	460
35	283
45	142

SS25
25° SEMI-SPECULAR WITH CLEAR LENS

Throw Distance (ft)	Beam Diameter (ft)
6	2.7
8	3.6
10	4.5
12	5.4
14	6.3
Illuminance at Center (fc)	
67	
38	
24	
17	
12	
WATTS: 12.4	LPW: 65.3
LUMENS: 810	CCT: 3000K
INTENSITY	
DEGREE	CANDELA
0	2413
5	2168
15	983
25	443
35	174
45	19

WH70
73° BRILLIANT WHITE WITH CLEAR LENS

Throw Distance (ft)	Beam Diameter (ft)
6	8.8
8	11.8
10	14.7
12	17.6
14	20.6
Illuminance at Center (fc)	
14	
8	
5	
3	
3	
WATTS: 12.4	LPW: 67
LUMENS: 831	CCT: 3000K
INTENSITY	
DEGREE	CANDELA
0	499
5	498
15	481
25	454
35	287
45	135

HE40
43° HIGH EFFICIENCY DIFFUSED LENS

Throw Distance (ft)	Beam Diameter (ft)
6	4.7
8	6.3
10	7.8
12	9.4
14	11
Illuminance at Center (fc)	
59	
33	
21	
15	
11	
WATTS: 23.1	LPW: 66
LUMENS: 1524	CCT: 3000K
INTENSITY	
DEGREE	CANDELA
0	2110
5	2026
15	1479
25	847
35	438
45	209

HE60
60° HIGH EFFICIENCY DIFFUSED LENS

Throw Distance (ft)	Beam Diameter (ft)
6	6.9
8	9.2
10	11.5
12	13.8
14	16.1
Illuminance at Center (fc)	
37	
21	
13	
9	
7	
WATTS: 23.1	LPW: 63.8
LUMENS: 1474	CCT: 3000K
INTENSITY	
DEGREE	CANDELA
0	1346
5	1321
15	1135
25	833
35	513
45	258

SS25
25° SEMI-SPECULAR WITH CLEAR LENS

Throw Distance (ft)	Beam Diameter (ft)
6	2.7
8	3.6
10	4.5
12	5.4
14	6.3
Illuminance at Center (fc)	
121	
68	
44	
30	
22	
WATTS: 23.1	LPW: 63.5
LUMENS: 1466	CCT: 3000K
INTENSITY	
DEGREE	CANDELA
0	4370
5	3928
15	1780
25	802
35	316
45	34

WH70
73° BRILLIANT WHITE WITH CLEAR LENS

Throw Distance (ft)	Beam Diameter (ft)
6	8.8
8	11.8
10	14.7
12	17.6
14	20.6
Illuminance at Center (fc)	
25	
14	
9	
6	
5	
WATTS: 23.1	LPW: 65.2
LUMENS: 1505	CCT: 3000K
INTENSITY	
DEGREE	CANDELA
0	904
5	901
15	871
25	822
35	520
45	245

PROJECT INFORMATION		
JOB NAME		TYPE
ORDERING CODE		

PHOTOMETRIC DATA

NICHIA

HE40
41° HIGH EFFICIENCY DIFFUSED LENS

Throw Distance (ft)	Beam Diameter (ft)
6	4.5
8	6
10	7.5
12	9
14	10.6
Illuminance at Center (fc)	
36	
20	
13	
9	
7	
WATTS: 11.5	LPW: 77.9
LUMENS: 896	CCT: 3000K
INTENSITY	
DEGREE	CANDELA
0	1308
5	1253
15	897
25	495
35	249
45	118

HE60
58° HIGH EFFICIENCY DIFFUSED LENS

Throw Distance (ft)	Beam Diameter (ft)
6	6.6
8	8.9
10	11.1
12	13.3
14	15.5
Illuminance at Center (fc)	
23	
13	
8	
6	
4	
WATTS: 11.5	LPW: 76.4
LUMENS: 879	CCT: 3000K
INTENSITY	
DEGREE	CANDELA
0	835
5	817
15	689
25	497
35	303
45	151

SS25
22° SEMI-SPECULAR WITH CLEAR LENS

Throw Distance (ft)	Beam Diameter (ft)
6	2.4
8	3.2
10	3.9
12	4.7
14	5.5
Illuminance at Center (fc)	
84	
47	
30	
21	
15	
WATTS: 11.5	LPW: 75.4
LUMENS: 867	CCT: 3000K
INTENSITY	
DEGREE	CANDELA
0	3020
5	2599
15	1045
25	445
35	184
45	20

WH70
73° BRILLIANT WHITE WITH CLEAR LENS

Throw Distance (ft)	Beam Diameter (ft)
6	8.8
8	11.8
10	14.7
12	17.7
14	20.6
Illuminance at Center (fc)	
14	
8	
5	
4	
3	
WATTS: 11.5	LPW: 76.3
LUMENS: 877	CCT: 3000K
INTENSITY	
DEGREE	CANDELA
0	522
5	520
15	501
25	472
35	306
45	146

HE40
43° HIGH EFFICIENCY DIFFUSED LENS

Throw Distance (ft)	Beam Diameter (ft)
6	4.5
8	6
10	7.5
12	9
14	10.6
Illuminance at Center (fc)	
75	
42	
27	
19	
14	
WATTS: 23.8	LPW: 77.9
LUMENS: 1853	CCT: 3000K
INTENSITY	
DEGREE	CANDELA
0	2706
5	2592
15	1854
25	1024
35	515
45	244

HE60
60° HIGH EFFICIENCY DIFFUSED LENS

Throw Distance (ft)	Beam Diameter (ft)
6	6.6
8	8.9
10	11.1
12	13.3
14	15.5
Illuminance at Center (fc)	
48	
27	
17	
12	
9	
WATTS: 23.8	LPW: 76.4
LUMENS: 1817	CCT: 3000K
INTENSITY	
DEGREE	CANDELA
0	1726
5	1690
15	1424
25	1028
35	626
45	313

SS25
25° SEMI-SPECULAR WITH CLEAR LENS

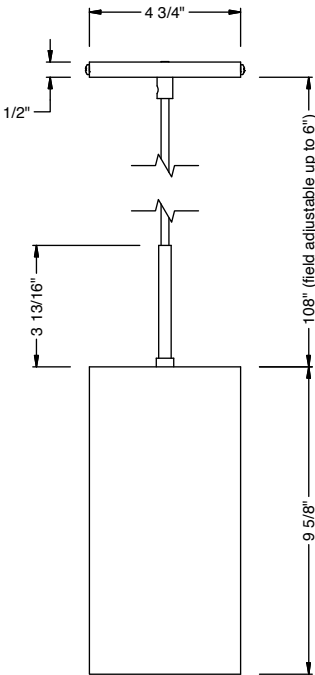
Throw Distance (ft)	Beam Diameter (ft)
6	2.4
8	3.2
10	3.9
12	4.7
14	5.5
Illuminance at Center (fc)	
174	
98	
62	
43	
32	
WATTS: 23.8	LPW: 75.4
LUMENS: 1794	CCT: 3000K
INTENSITY	
DEGREE	CANDELA
0	6246
5	5375
15	2160
25	920
35	381
45	41

WH70
73° BRILLIANT WHITE WITH CLEAR LENS

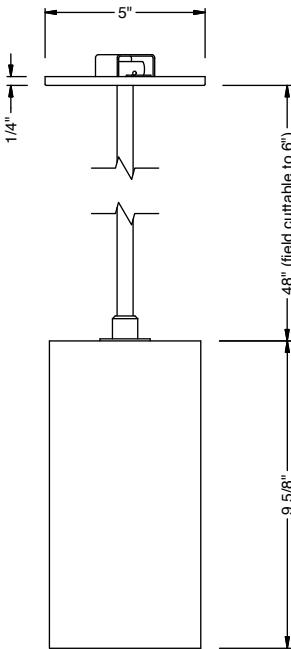
Throw Distance (ft)	Beam Diameter (ft)
6	8.8
8	11.8
10	14.7
12	17.7
14	20.6
Illuminance at Center (fc)	
30	
17	
11	
7	
6	
WATTS: 23.8	LPW: 76.2
LUMENS: 1814	CCT: 3000K
INTENSITY	
DEGREE	CANDELA
0	1079
5	1075
15	1036
25	976
35	633
45	302

PROJECT INFORMATION		
JOB NAME		TYPE
ORDERING CODE		

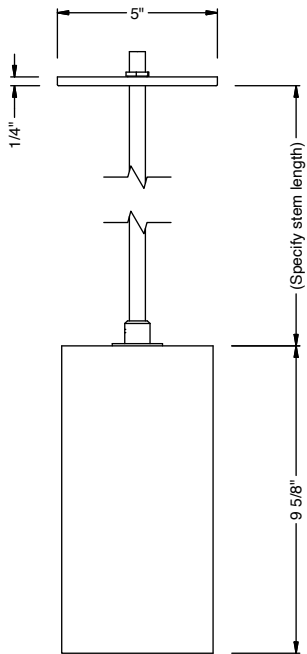
MOUNTING OPTIONS



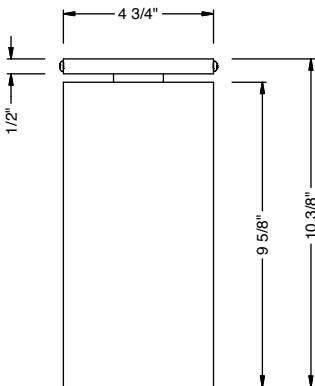
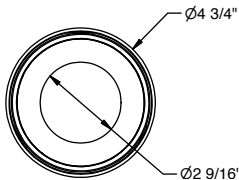
**PENDANT
CAS**



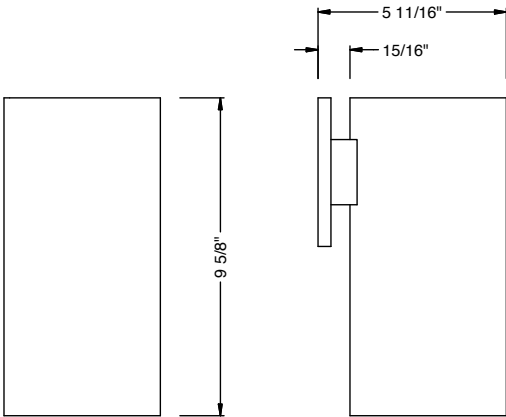
**RP SWIVEL
DIM10 / DMX / CAS**



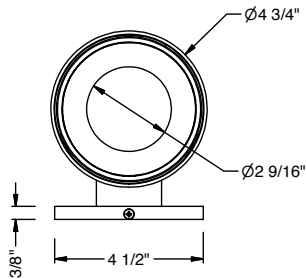
**RP FIXED
DIM10 / DMX / CAS**



**SURFACE MOUNT
DIM10 / DMX / CAS**



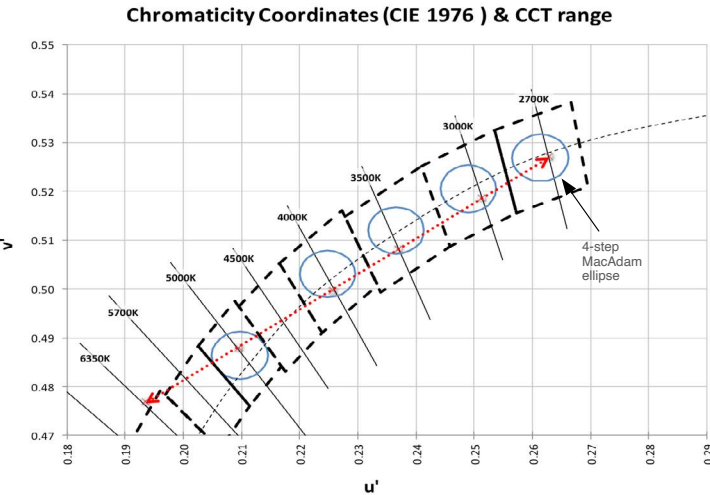
**WALL MOUNT
DIM10 / DMX / CAS**



PROJECT INFORMATION		
JOB NAME	TYPE	
ORDERING CODE		

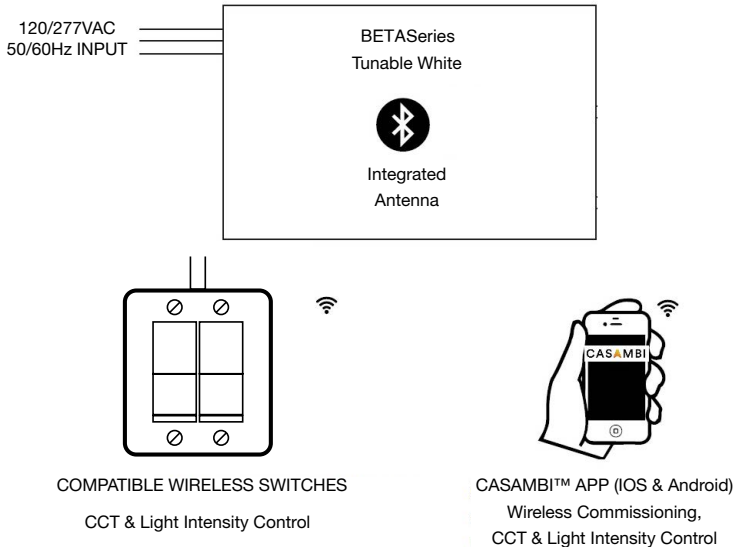
TUNABLE WHITE

LUMINUS 95CRI

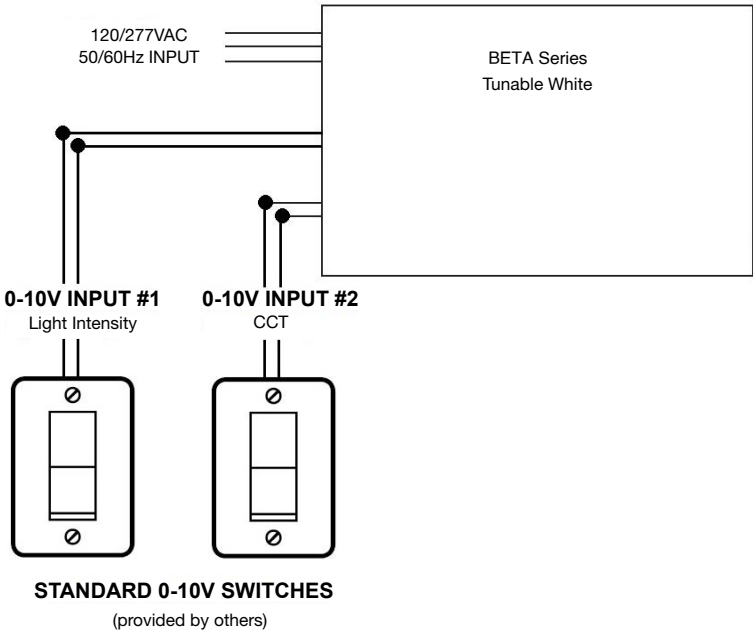


WIRING DIAGRAMS

“CAS” CASAMBI CONTROLS



“DIM10” HARDWIRED 0-10V CONTROL



- NOTES
- 1 Consult factory to order compatible wireless switches.