



EZJ-Box | DMX

Specification Sheet

96W, 24V Constant Voltage LED Driver & DMX Decoder Integrated Into Junction Box

Key Features

- Use with multi-channel LED products:
 - 4-channel RGBW
 - 3-channel RGB
 - 2-channel Tunable White
 - Static white/colors
- Pair with any DMX512 controller
- Driver & DMX Decoder pre-wired saving time
- Clean & professional installation
- Covered & ventilated Surface Mount enclosure

Specification Overview

- 4 channel DMX512/RDM decoder with Master mode
- Programmable PWM output from 500 Hz to 3500 Hz
- Flicker free dimming down to 0.1%
- Universal input voltage 120 to 277VAC
- Class 2, 24V constant voltage
- UL Listed & Recognized components
- 5-year warranty

ORDERING INFORMATION

Part Number	Description
EZJ-S-N-96-24DC-DMX	EZJ DMX, 120-277VAC, 96W, 24VDC, DMX512 4 Channel Decoder

ENCLOSURE DETAILS

Dimensions	Material	Finish	Environmental
11.9" W x 11.0" H x 2.3" D (301mm x 278mm x 59mm)	Stamped Steel	Powder Coat	Dry Location

120-277V

24VAC

CLASS 2

SELV



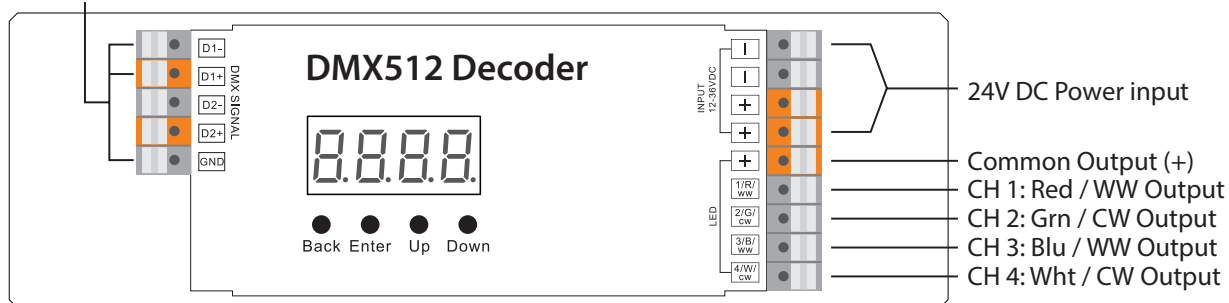
SPECIFICATIONS

Input	
Input Voltage Range	120 to 277VAC \pm 10%
Input Frequency	50 / 60Hz
Input Current	0.96A Max @ 120V
Inrush Current	5A Max @ 120V
Efficiency	> 84% @ 120V
Power Factor	0.95 @ 120V
THD	< 20%
Output	
Output Voltage	24VDC Constant Voltage
Output Power	4ch x 22W (3ch x 29W, 2ch x 44W)
Max Load	96W
Output Current	4 x 1A
Output Current @ Maximum Load	4.1A
Output Dimming Method	DMX512
Flicker	California Title 24 / JA8
Output Ripple (Peak-to-Peak)	<3%
Line Regulation	< 2%
Load Regulation	< 3%
Turn On Delay Time	< 0.5 sec
Environmental	
Ambient Operating Temperature	-20°C to 50°C / (-4°F to 125°F)
Maximum Case Temp. (Tcase)	90°C (194°F)
Storage Temperature	-40°C to +85°C / (-40°F to 185°F)
Enclosure	Dry Location
Cover Screws	Stainless Steel
Expected Lifetime	\geq 80,000 hrs @ Tc \leq 60°C
Dimming	
Output Dimming Method	DMX 512 PWM
Minimum Dimming Level	0.1%
Minimum Load for Dimming	5W
Dimming Curve	Programmable
Protection	
Over Current Protection	Yes
Over Voltage Protection	Yes
Over Temperature Protection	Yes / Hiccup Mode
Overload Protection	Yes / Current Limit
Short Circuit Protection	Yes / Current Limit
Approval Markings & Certifications	
Listing	UL Listed & Recognized components
Certifications	Class 2

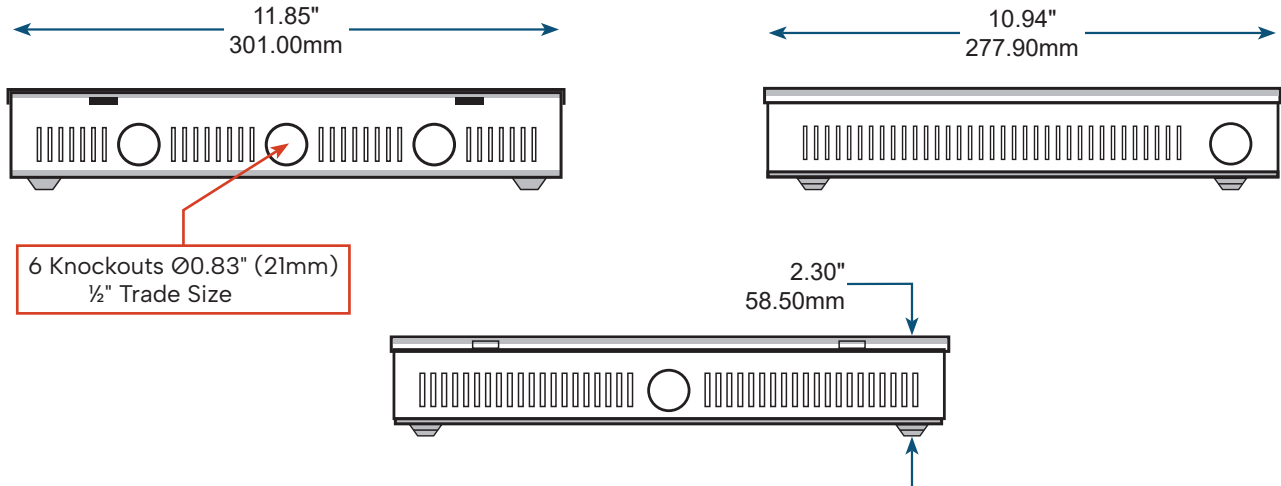
DMX DECODER SPECIFICATIONS

Input	
Input Voltage Range	12 – 36VDC
Output	
Output Voltage	24VDC
Output Power	4 x (60-180W)
Output Current	4 x 5A
Output Dimming Method	DMX512
Minimum Dimming Level	0.1%
Features	
DMX Protocol Compatibility	DMX, DMX512, DMX512(1990), DMX 512-A, RDM V1.0 (E1.20 – 2006 ESTA Standard)
DMX Decoder with Master Mode Option	In Master Mode use interface on Decoder to control lighting. No remote DMX controller required. (Note: Master Mode has limited functions)
RDM Function	Allows two-way communication with Controller
4 PWM Output Channels + Common	1 to 4 Channels for RGB, RGB-W, Dynamic & Static
Programmable PWM Output Resolution	8-Bit (256 steps) or 16-Bit (65,536 steps)
Programmable PWM Output Frequency	From 500 Hz to 3500 Hz
Programmable Output Dimming Curve	Linear plus 6 optional Logarithmic curves
Updatable Firmware	Updatable through DMX port (Windows only)

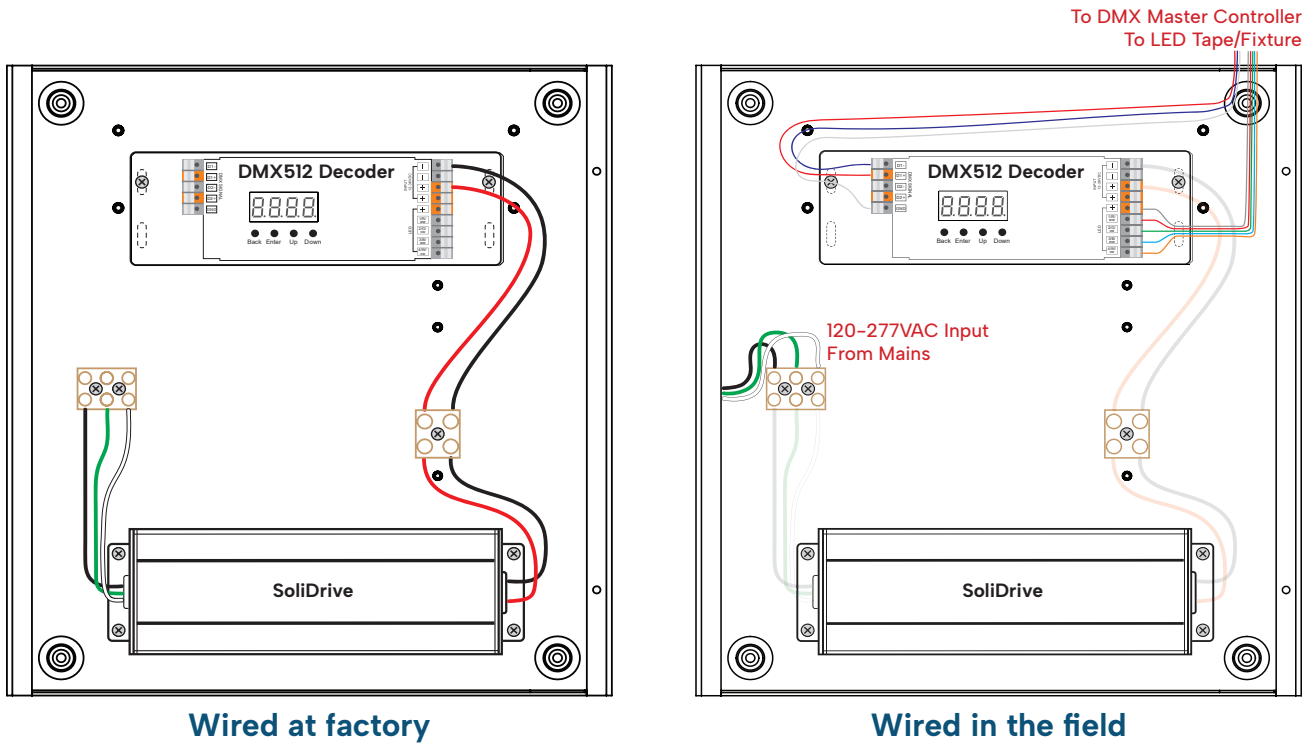
DMX512 Signal
Input & Output



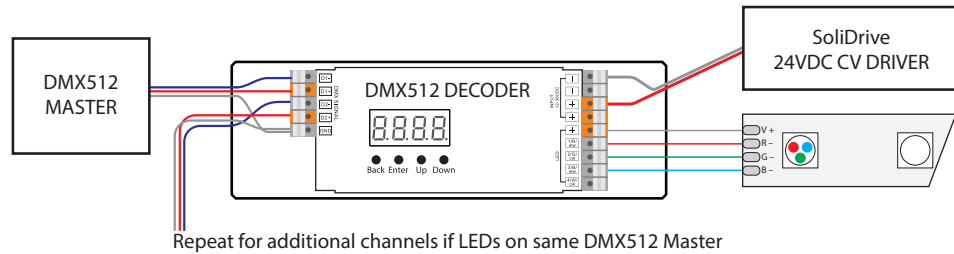
MECHANICAL DIAGRAMS



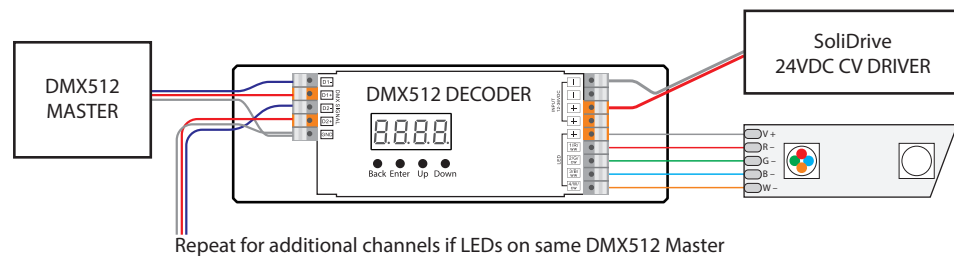
WIRING DIAGRAMS



RGB Wiring

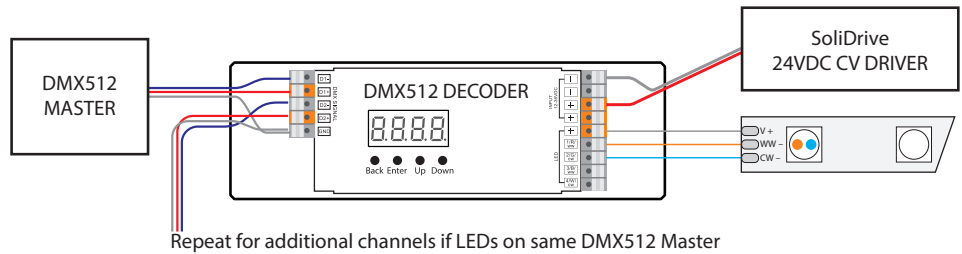


RGB-W Wiring



WIRING DIAGRAMS

3-Wire Tunable White Wiring



Static Color Wiring

