



PL-L

10PL-L/COR/24-5CCT/MF11/G/4P 10/1

CorePro, LED, PL-L, 10 W, 2700 K, 3000 K, 3500 K, 4000 K, 5000 K, 1100 lm, 1100 lm, 1100 lm, 1150 lm, 1150 lm, 50000 hour(s)

Philips MainsFit (UL Type B) LED lamps make the transition to LED from CFL lamps as simple as replacing a lamp. With a wide array of color temperatures, the InstantFit LED lamps can quickly and effectively replace compact fluorescent lamps.

Product data

General Information		Power Consumption	
Cap-Base	2G11	Power Consumption	10 W
Nominal lifetime	50,000 hour(s)	Lamp Current (Max)	110 mA
Switching Cycle	50,000	Lamp Current (Min)	50 mA
Lighting Technology	LED	Wattage Equivalent	24 W
		Starting Time (Nom)	0.5 s
		Warm-up time to 60% light	0.5 s
		Power Factor (Fraction)	0.9
		Voltage (Nom)	120-277 V
Light Technical		Temperature	
Color Code	2700/3000/3500/4000/5000	T-Case Maximum (Nom)	167 °F
Beam Angle (Nom)	140 degree(s)		
Luminous Flux	1,100 1,100 1,100 1,150 1,150 lm	Controls and Dimming	
Color Designation	2700/3000/3500/4000/5000	Dimmable	Only with specific dimmers
Correlated Color Temperature (Nom)	2700 3000 3500 4000 5000 K		
Luminous Efficacy (rated) (Nom)	115 lm/W	Mechanical and Housing	
Color Consistency	<6	Bulb Finish	Frosted
Color rendering index (CRI)	82	Bulb Material	Glass
LLMF At End Of Nominal Lifetime (Nom)	70 %	Product Length	12-1/4 inch
Operating and Electrical			
Input Frequency	50 to 60 Hz		

PL-L

Bulb Shape	PL-L
Net Weight (Piece)	0.234 lb

Approval and Application

EU RoHS compliant	Yes
Ambient temperature range	-4 to +113 °F

Application Conditions

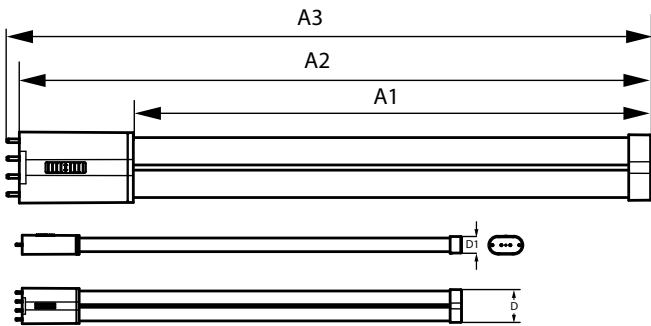
can it be used in closed luminaires	Yes
-------------------------------------	-----

Product Data

Order product name	10PL-L/COR/24-5CCT/MF11/G/4P 10/1
--------------------	-----------------------------------

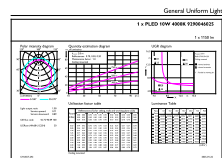
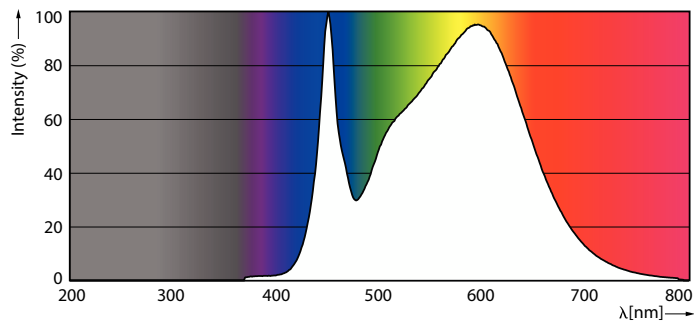
Full product name	10PL-L/COR/24-5CCT/MF11/G/4P 10/1
Order code	607135
Material Nr. (12NC)	929004602504
Numerator - Quantity Per Pack	1
EAN/UPC - Product/Case	046677607135
Numerator - Packs per outer box	10
EAN/UPC - Case	50046677607130

Dimensional drawing



Product	D1	D	A1	A2	A3
10PL-L/COR/24-5CCT/ MF11/G/4P 10/1	7/8 inch	1-5/8 inch	9-1/2 inch	12-1/4 inch	12-5/8 inch

Photometric data

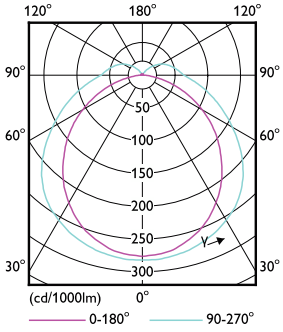


General uniform lighting - 10PL-L/COR/24-5CCT/MF11/G/4P 10/1

Spectral Power Distribution Colour - 10PL-L/COR/24-5CCT/MF11/G/4P 10/1

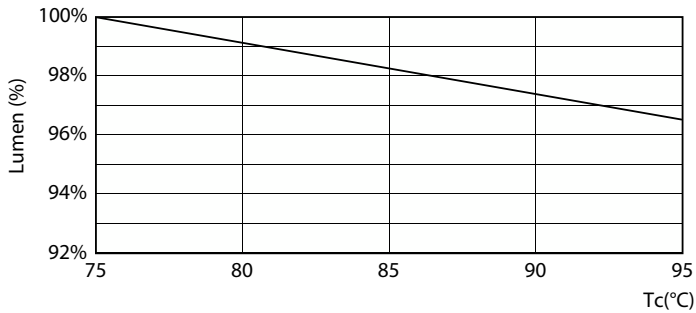
General uniform lighting - 10PL-L/COR/24-5CCT/MF11/G/4P 10/1

Photometric data

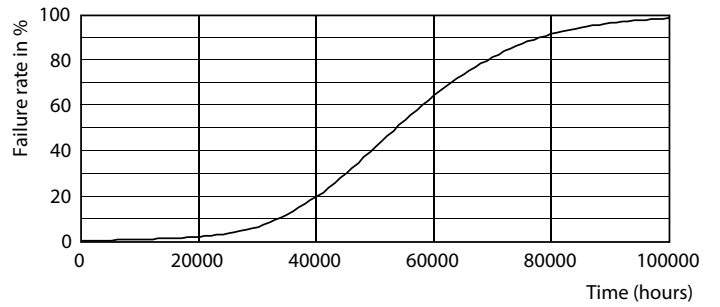


Light Distribution Diagram - 10PL-L/COR/24-5CCT/MF11/G/4P 10/1

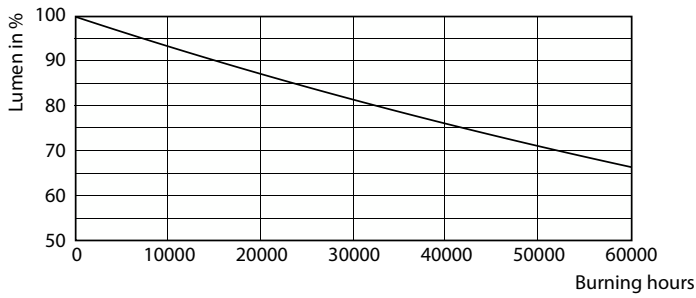
Lifetime



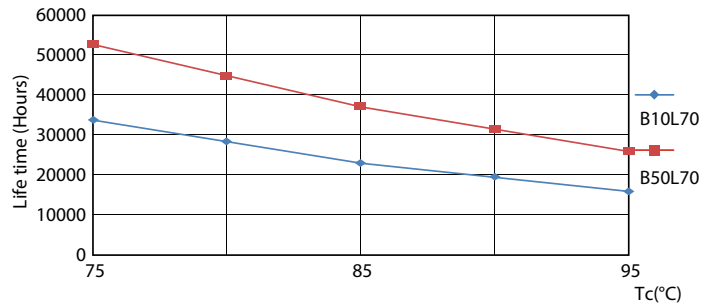
Lumen Maintenance Diagram - 10PL-L/COR/24-5CCT/MF11/G/4P 10/1



Life Expectancy Diagram

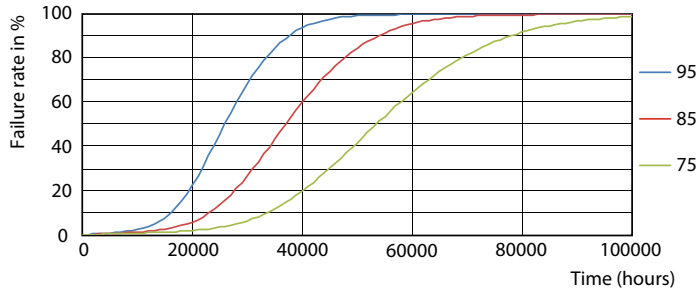


Lumen Maintenance Diagram - 10PL-L/COR/24-5CCT/MF11/G/4P 10/1



LEDtube 50K 7595 LifetimeVsTc-LED

Lifetime



LEDtube 50K 7595 FailureRate-LED

