

A LINE | FLEX



SIMPLICITY & SOPHISTICATION

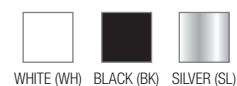
Combining sleek aesthetics with the power of versatility, the FLEX Series by A-Line fits a variety of applications from Grocery Stores, Fast Food, Retail, Hospitality and everything in-between. Fulfill the vision of your next project with Dim-to-Warm, 27K, 30K, 35K and 40K color options, up to a commanding **4140 lumens delivered**, 95+CRI and **7 mounting options**. Available in black, white or silver, FLEX will provide your space with consistency of appearance and integrity of design throughout every room.



DELIVERED

FLX 15: up to 1480 lm (15W)
 FLX 22: up to 2330 lm (22W)
 FLX 32: up to 3000 lm (32W)
 FLX 38: up to 4140 lm (38W)

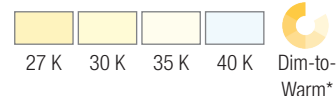
FINISH



BEAM ANGLES



CCT



*Dim-to-Warm available for FLX15 only.

FIELD CHANGEABLE OPTICS

In the dynamic environments of retail and hospitality spaces, where layouts evolve, the FLEX Optic Replacement tool offers unparalleled flexibility. Rather than replacing entire fixtures as needs change, this tool allows for the adjustment of optics on-site.



MOUNTING OPTIONS



MONOPOINT



SURFACE



TRACK



PENDANT



TRACK PENDANT



WALL SCONCE



DUAL HEAD

ACCESSORIES



EXTENDER



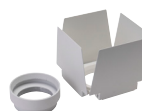
HONEYCOMB



OVAL SNOOT



SNOOT



BARN DOOR



LINEAR SPREAD LENS



SOFTENING LENS



LITELINE CORPORATION
 Copyright © 2024
 All rights reserved.

TELEPHONE
 416.996.1856
 1.866.730.7704

FAX
 905.709.5255
 1.888.738.9736

a-linelighting.com



M-FLEX-SS-E
 REV 01.19.24