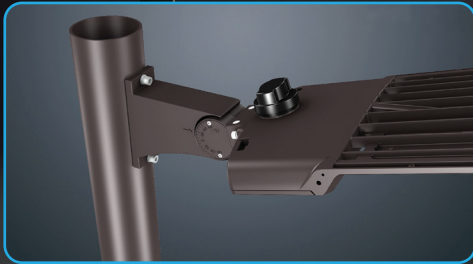


## LED SHOEBOX LIGHT

- 3 CCT SELECTABLE
- 3 WATTAGE ADJUSTABLE
- INTERCHANGEABLE OPTIC LENS

### FEATURING



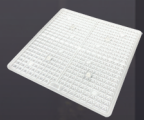
ADJUSTABLE POLE MOUNT INCLUDED



INTERCHANGEABLE OPTIC LENS

### AVAILABLE ACCESSORIES

\*SOLD SEPARATELY



T4 & T5 OPTIC LENS



SHIELD



20KV SURGE PROTECTOR



SLIPFITTER MOUNT



YOKE MOUNT

3-PIN SMART SENSOR LR41511



3-PIN MOTION SENSOR LR41510



MOTION SENSOR REMOTE LR41512



### INTERCHANGEABLE OPTIC LENS

150W  
LR41130

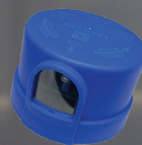
100W | 120W | 150W

300W  
LR41132

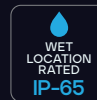
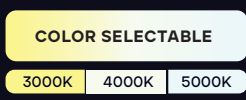
200W | 240W | 300W



SHORTING CAP  
\*INCLUDED



PHOTOCELL SENSOR  
\*INCLUDED



## LED SHOEBOX LIGHT

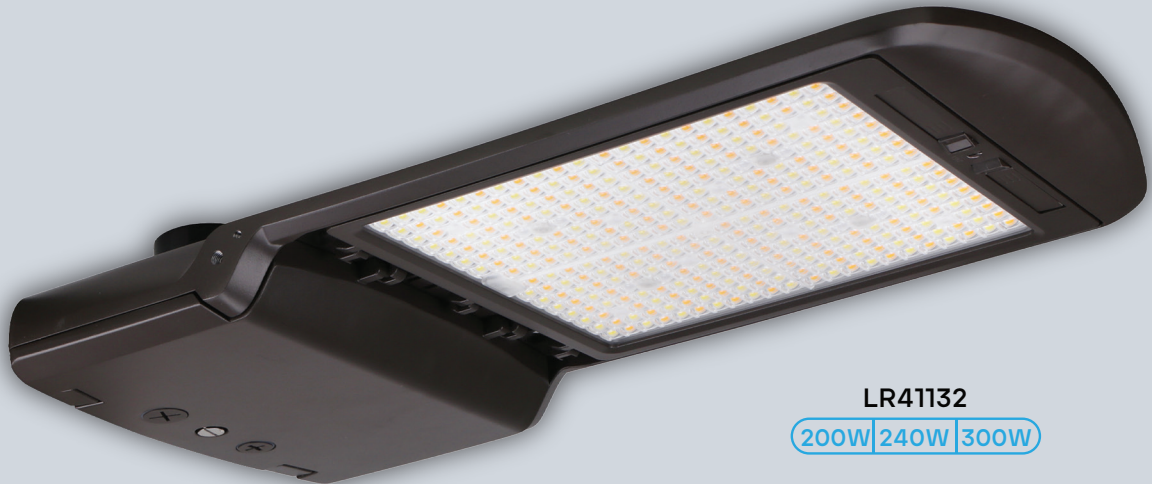
OPTIC LENS/3 CCT/ 3 WATTAGE ADJUSTABLE

150W, 300W



LR41130

100W | 120W | 150W



LR41132

200W | 240W | 300W

CRI  
80

COLOR SELECTABLE

3000K | 4000K | 5000K

WATTAGE  
SELECTABLE

3 OPTIONS



PHOTOCELL  
SENSOR

120-  
277V



SURGE  
PROTECTOR

DIMMABLE

0-10V



WET  
LOCATION  
RATED  
IP-65

5  
YEAR  
WARRANTY

ITEM No.  
**LR41130**

DESCRIPTION  
LEDXSB150/3CCT/3WO/T3/UNV/D/TLPC/SC/DM/BZ

POWER  
100W  
120W  
150W

DC  
PHOTOCELL  
SENSOR

6KV  
SURGE  
PROTECTOR

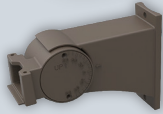
**DLC**  
LISTED  
PREMIUM  
S-TVRVM2  
S-ZY704V

**150W**

100W | 120W | 150W



T3 OPTIC LENS INCLUDED



ADJUSTABLE POLE MOUNT

\*INCLUDED



SHORTING CAP

\*INCLUDED

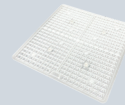


PHOTOCELL SENSOR

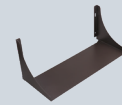
\*INCLUDED

AVAILABLE ACCESSORIES

\*SOLD SEPARATELY



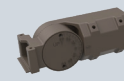
LR41138 - T4 OPTIC LENS  
LR41139 - T5 OPTIC LENS



LR41145 SHIELD



LR41143  
20KV SURGE  
PROTECTOR



LR41135  
SLIPFITTER  
MOUNT



LR41136  
YOKE  
MOUNT

LR41511  
3-PIN  
SMART  
SENSOR



LR41510  
3-PIN  
MOTION  
SENSOR



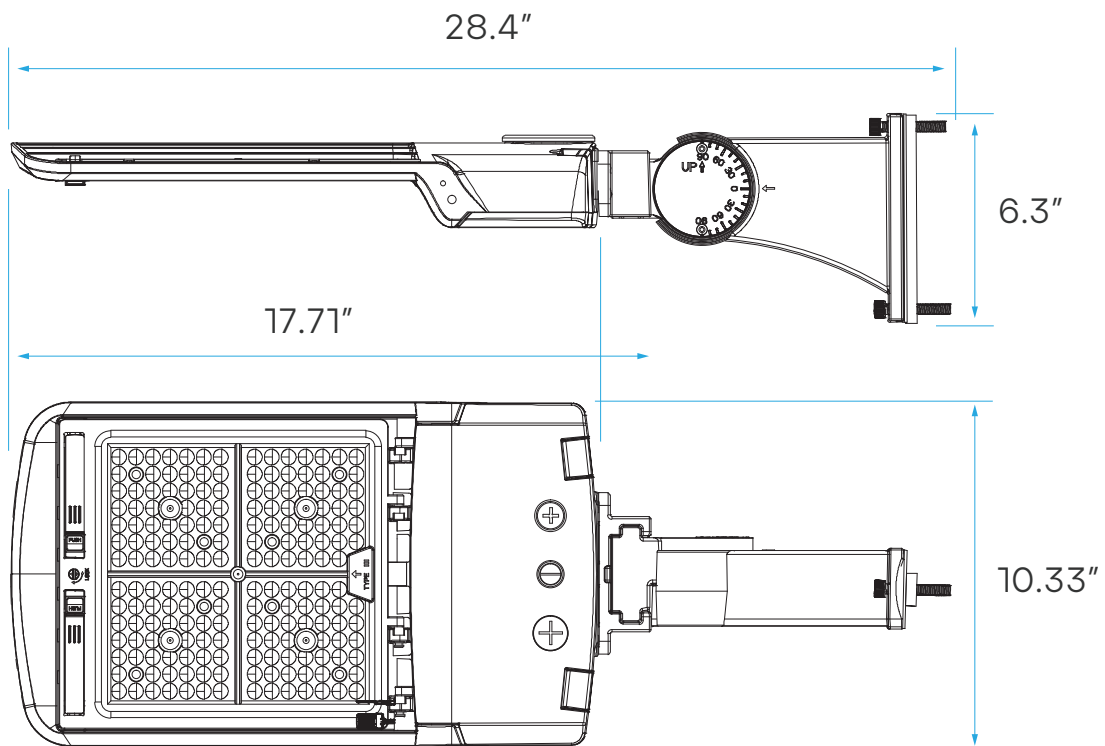
LR41512  
MOTION  
SENSOR  
REMOTE



	COLOR TEMPERATURE	3000K		4000K		5000K	
		INPUT POWER (TOLERANCE: ±10%)	EFFICACY (TOLERANCE: ±3%)	LUMEN (TOLERANCE: ±10%)	EFFICACY (TOLERANCE: ±3%)	LUMEN (TOLERANCE: ±10%)	EFFICACY (TOLERANCE: ±3%)
OPTICAL	150	142	21,300	153	22,950	148	22,200
	120	145	17,400	155	18,600	151	18,120
	100	148	14,800	158	15,800	154	15,400
	CRI	>80					
	COLOR CONSISTENCY	<7 STEPS (OR <7 SDCM)					
	BUG	B4-U0-G2					
	DISTRIBUTION PATTERN	TYPE III					
	BEAM ANGLE (50%) (TOLERANCE: ±10%)	140°*140°					
ELECTRICAL	INPUT VOLTAGE AND FREQUENCY	120-277VAC, 50/60Hz					
	POWER FACTOR (TOLERANCE: -3%)	>0.9					
	THD (TOLERANCE: +5%)	<20%					
	FLICKER PERCENT	<5%					
	DRIVER BRAND	LIFUD					
	DRIVER MODEL	LF-FAA150					
	SURGE PROTECTION	L/N-PE: 6kV, L-N: 6kV					
	DIMMING	0-10V DIMMING STANDARD					
	SENSOR TYPE	OCCUPANCY SENSOR, EXTERIOR PHOTOCELL, INTEGRAL SENSOR RECEPTACLE					
	OPTIONAL ACCESSORY	PHOTOCONTROL, SURGE-PROTECTIVE DEVICE, DC MOTION MIRCOWAVE SENSOR, DC MOTION PIR SENSOR, PHOTOCELL RECEPTACLE, SHORTING CAP					
MATERIALS	LED BRAND	LUMILEDS					
	LED TYPE	2835					
	LED QTY	168PCS*2					
	HOUSING	DIE-CAST ALUMINUM					
	HOUSING COLOR	BROWN, BLACK, OR CUSTOMIZED					
	EPA	1.2 FT²					
WATERPROOF RATING	WET (IP65)						

OTHERS	OPERATING TEMPERATURE	-40°C TO 50°C
	STORAGE TEMPERATURE	-40°C TO 80°C
	OPERATING HUMIDITY	10% - 90% RH
	STORAGE HUMIDITY	5% - 95% RH
	WARRANTY	5 YEARS

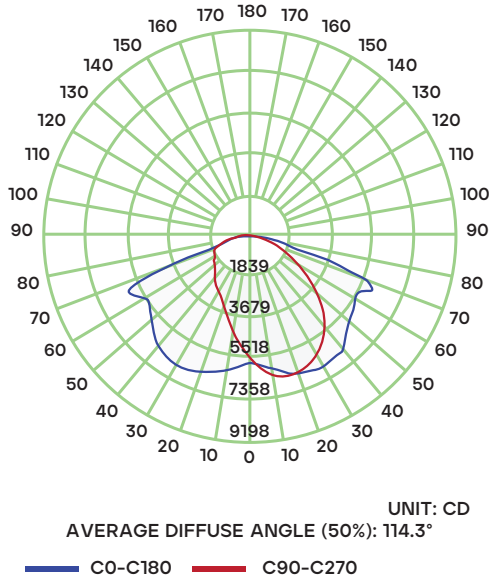
## DIMENSIONS



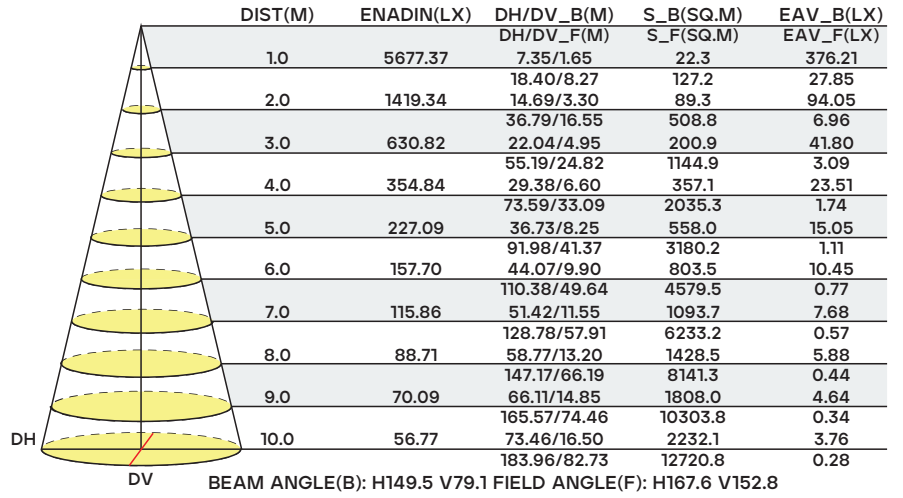
## PHOTOMETRIC RESULTS

IES CLASSIFICATION	TYPE IV
TOTAL RATED LAMP LUMENS	21781.4 LM
EFFICIENCY	100%
UPWARD RATIO	0%
CORO INTENSITY	3695.05 CD
POS OF MAX. INTENSITY	H247.5 V57
BEAM ANGLE (C0/C180, C90, C270, C45/C225, C315/315)	139.7, 137.7, 148.1 148.5
LONGITUDINAL CLARIFICATION	VERY SHORT
MEASUREMENT FLUX	21781.4 LM
DOWNWARD RATIO	100%
LUMINAIRE EFFICACY RATING (LER)	145.70
MAX. INTENSITY	5585.37 CD

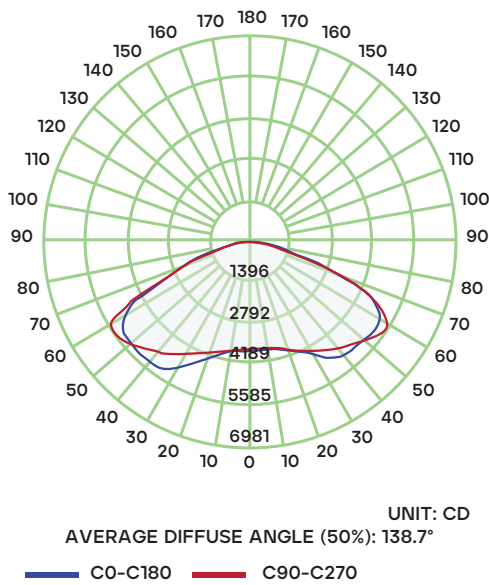
### T3 - ILLUMINANCE INTENSITY DISTRIBUTION CURVE



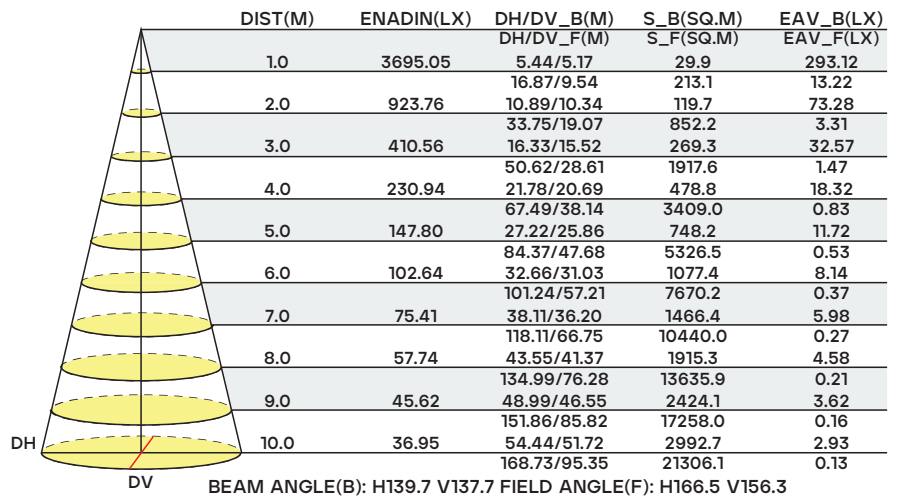
### T3 - ILLUMINANCE AT A DISTANCE



### T5 - ILLUMINANCE INTENSITY DISTRIBUTION CURVE



### T5 - ILLUMINANCE AT A DISTANCE



ITEM No.  
**LR41132**

DESCRIPTION  
LEDXSB300/3CCT/3WO/T3/UNV/D/TLPC/SC/DM/BZ

POWER  
200W  
240W  
300W

DC  
PHOTOCELL  
SENSOR

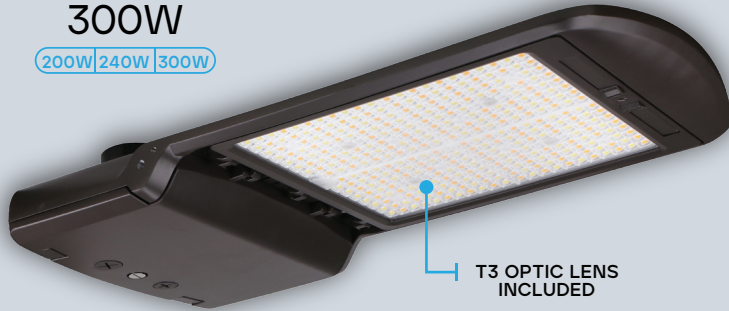
6KV  
SURGE  
PROTECTOR

UL  
CERTIFIED

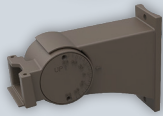
DLC  
LISTED  
PREMIUM  
S-R7X63V  
S-VP568X

**300W**

200W | 240W | 300W



T3 OPTIC LENS  
INCLUDED



ADJUSTABLE POLE MOUNT

\*INCLUDED



SHORTING CAP

\*INCLUDED

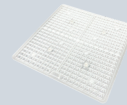


PHOTOCELL SENSOR

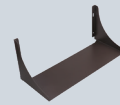
\*INCLUDED

AVAILABLE ACCESSORIES

\*SOLD SEPARATELY



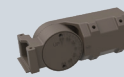
LR41141 - T4 OPTIC LENS  
LR41141 - T5 OPTIC LENS



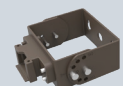
LR41146  
SHIELD



LR41143  
20KV SURGE  
PROTECTOR



LR41135  
SLIPFITTER  
MOUNT



LR41136  
YOKE  
MOUNT

LR41511  
3-PIN  
SMART  
SENSOR



LR41510  
3-PIN  
MOTION  
SENSOR



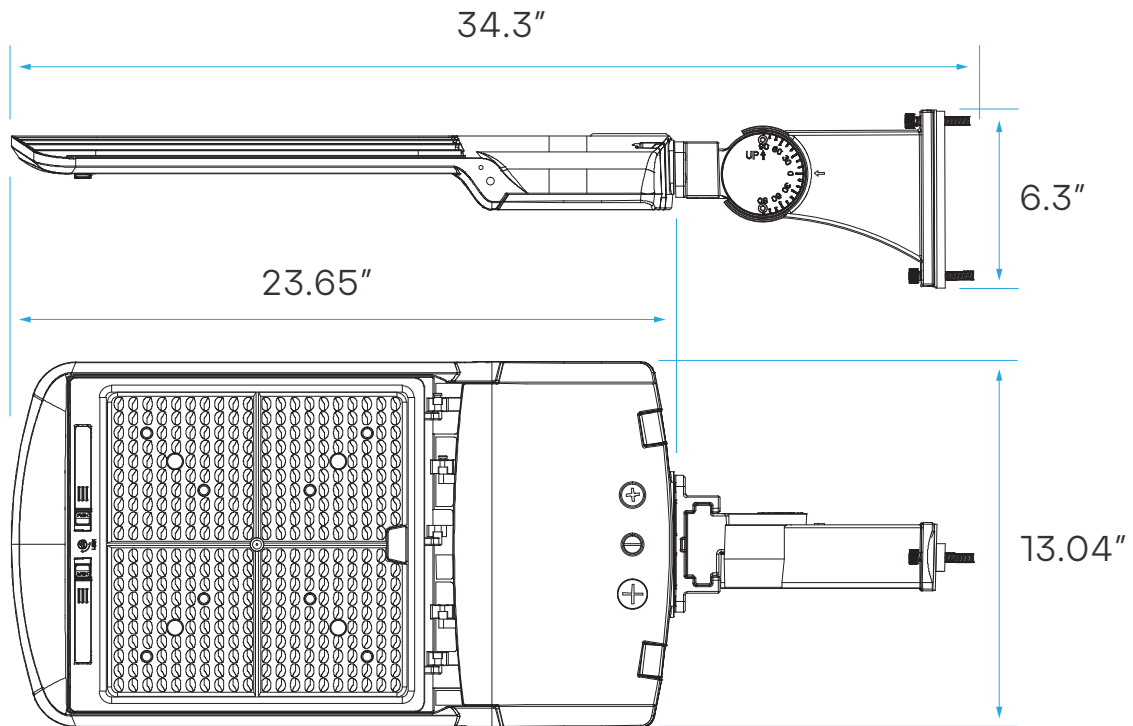
LR41512  
MOTION  
SENSOR  
REMOTE



	COLOR TEMPERATURE	3000K		4000K		5000K	
	INPUT POWER (TOLERANCE: ±10%)	EFFICACY (TOLERANCE: ±3%)	LUMEN (TOLERANCE: ±10%)	EFFICACY (TOLERANCE: ±3%)	LUMEN (TOLERANCE: ±10%)	EFFICACY (TOLERANCE: ±3%)	LUMEN (TOLERANCE: ±10%)
OPTICAL	300	142	42,600	153	45,900	148	44,400
	240	145	34,800	155	37,200	151	36,240
	200	148	29,600	158	31,600	154	30,800
	CRI	>80					
	COLOR CONSISTENCY	<7 STEPS (OR <7 SDCM)					
	BUG	B5-U0-G3					
	DISTRIBUTION PATTERN	TYPE V					
	BEAM ANGLE (50%) (TOLERANCE: ±10%)	140°*140°					
ELECTRICAL	INPUT VOLTAGE AND FREQUENCY	120-277VAC, 50/60Hz					
	PF (Tolerance : -3%)	≥0.9					
	THD (TOLERANCE: +5%)	≤20%					
	FLICKER PERCENT	<5%					
	DRIVER BRAND	LIFUD					
	DRIVER MODEL	LF-FAA320					
	SURGE PROTECTION	L/N-PE: 6kV, L-N: 6kV					
	DIMMING	0-10V DIMMING STANDARD					
	SENSOR TYPE	OCCUPANCY SENSOR, EXTERIOR PROTOCELL, INTEGRAL SENSOR RECEPTACLE					
	OPTIONAL ACCESSORY	PHOTOCONTROL, SURGE-PROTECTIVE DEVICE, DC MOTION MIRCOWAVE SENSOR, DC MOTION PIR SENSOR, PHOTOCELL RECEPTACLE, SHORTING CAP					
MATERIALS	LED BRAND	LUMILEDS					
	LED TYPE	2835					
	LED QTY	330PCS*2					
	HOUSING	DIE-CAST ALUMINUM					
	HOUSING COLOR	BROWN, BLACK, OR CUSTOMIZED					
	EPA	1.8 FT²					
WATERPROOF RATING	WET (IP65)						

OTHERS	OPERATING TEMPERATURE	-40°C TO 50°C
	STORAGE TEMPERATURE	-40°C TO 90°C
	OPERATING HUMIDITY	10% - 90% RH
	STORAGE HUMIDITY	5% - 95% RH
	WARRANTY	5 YEARS

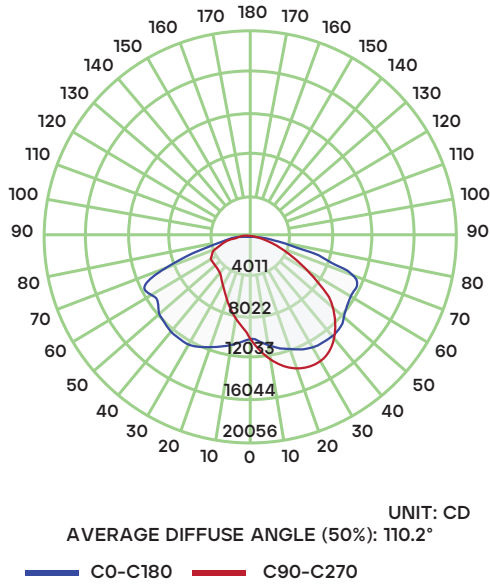
## DIMENSIONS



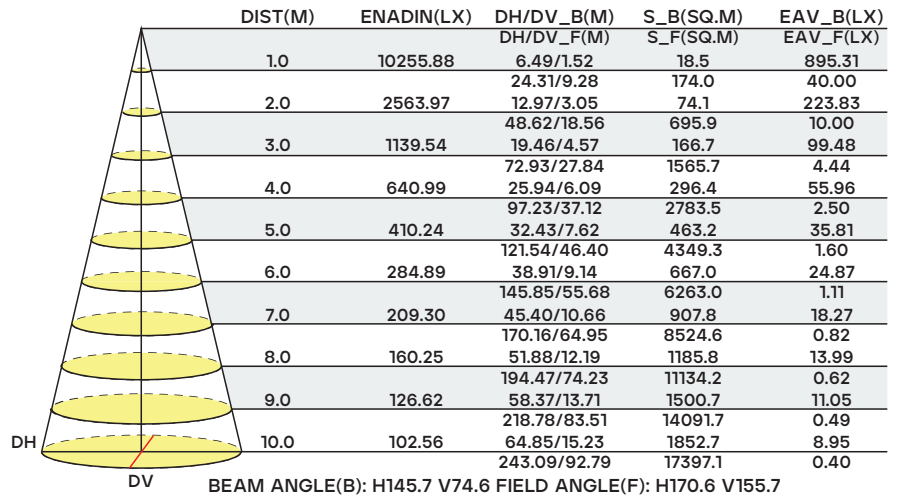
## PHOTOMETRIC RESULTS

IES CLASSIFICATION	TYPE III
TOTAL RATED LAMP LUMENS	43543.1 LM
EFFICIENCY	100%
UPWARD RATIO	0%
CORO INTENSITY	6544.95 CD
POS OF MAX. INTENSITY	H292.5 V51
BEAM ANGLE (C0/C180, C90, C270, C45/C225, C315/315)	133.4, 128.9, 139.4, 139.6
LONGITUDINAL CLARIFICATION	VERY SHORT
MEASUREMENT FLUX	43543.1 LM
DOWNWARD RATIO	100%
LUMINAIRE EFFICACY RATING (LER)	146.75
MAX. INTENSITY	13443.64 CD

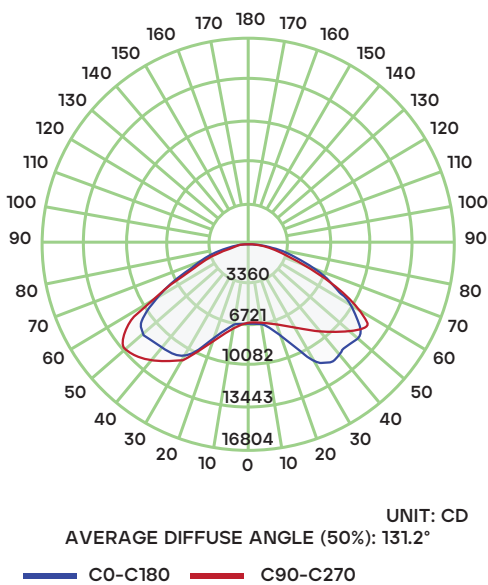
### T3 - ILLUMINANCE INTENSITY DISTRIBUTION CURVE



### T3 - ILLUMINANCE AT A DISTANCE



### T5 - ILLUMINANCE INTENSITY DISTRIBUTION CURVE



### T5 - ILLUMINANCE AT A DISTANCE

