



LED DOUBLE SIDE EXIT SIGN RED

ESD series

► **DESIGN** - THE LED DOUBLE SIDE EXIT SIGN RED features a functional design with a rectangular ABS housing that is fire-resistant and corrosion-proof. The design with integrated directional arrows on both sides for flexible installation. Bold red "EXIT" lettering ensures high visibility and complies with standard USA signage dimensions. Includes field-installable directional arrows that can be easily configured for left, right, or both directions to suit various exit routing needs.

► **INSTALLATION** - Model supports multiple mounting options, including wall mount and ceiling mount. The signs are compatible with standard junction boxes and designed for quick and easy installation.

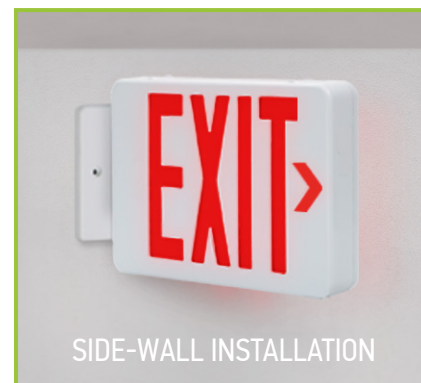
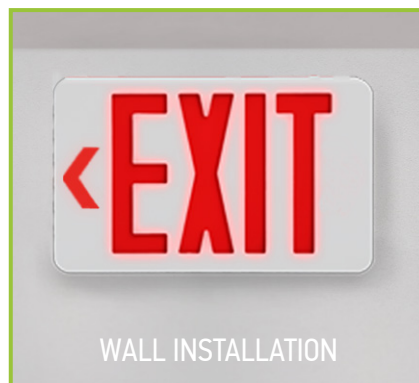
► **CAPABILITIES** - The exit sign includes a built-in rechargeable 1.2V Ni-Cd battery that provides at least 90 minutes of illumination during power outages. For a 120V connection, connect the black wire (hot) to the white wire (neutral), for a 277V connection, connect the red wire (hot) to the white wire (neutral). Model compliant with UL 924 Emergency Lighting and Exit Sign standards, ensuring reliability and safety in critical situations.

► **APPLICATION** - Designed for damp indoor environments. Suitable for both commercial and residential areas, this exit sign is widely used in offices, schools, hospitals, churches, supermarkets, apartment buildings, parking garages, and industrial facilities. The visibility and compliance make it ideal for marking safe egress paths in public and high-traffic spaces.

► **ADVANTAGES** - With a lifespan of 50,000 hours, these fixtures are made to last decades under normal operation! ASD provides a 5-year limited warranty along with UL certifications to guarantee top quality products and safety!



MOUNTING OPTIONS:



PRODUCT PRESENTATION:

Model	Letters finish	Power of product	Battery information	Voltage	Finish	Type	Location	Dimensions	Certification
ASD-ESD-RW	Red	1 W	1.2V 700mAh Ni-CD	120/277V	White	Double side	Damp location	11-5/8" x 7-3/16" x 1-9/16"	UL(E495654)

TECHNICAL PARAMETERS:

Model	Work environment	Operating temperature	Housing
ASD-ESD-RW	Damp location	32°F to 104°F (0°C to 40°C)	Plastic

ORDERING INFORMATION

Model	Product dimensions	Weight	Pcs. Per carton	Carton size	Carton weight	UPC	GTIN 14
ASD-ESD-RW	11-5/8" x 7-3/16" x 1-9/16"	1.9 lbs(0.9kg)	6	14.57" x 12.40" x 8.27"	13.6 lbs	81019020108	10810190201081

For most up-to-date spec sheets please refer to asd-lighting.com

ASD LIGHTING CORP

E-mail: orders@asd-lighting.com | Web site: www.asd-lighting.com





LED DOUBLE SIDE EXIT SIGN RED

ESD series

INSTALLATION GUIDE

IMPORTANT SAFETY INFORMATION:

Please read all the instructions below before installation!

- ▶ Make sure that the supply voltage corresponds to the rated product voltage.
- ▶ The product must be installed by a qualified electrician in accordance with the National Electrical Code and corresponding local codes.
- ▶ If the product is damaged, do not use it.

⚠ WARNING

Risk of personal injury – read and follow all warnings and installation instructions. Keep or give to the owner for future reference.

Risk of cuts: Wear gloves to prevent cuts or abrasions when removing from carton, handling, installing, and maintaining this product.

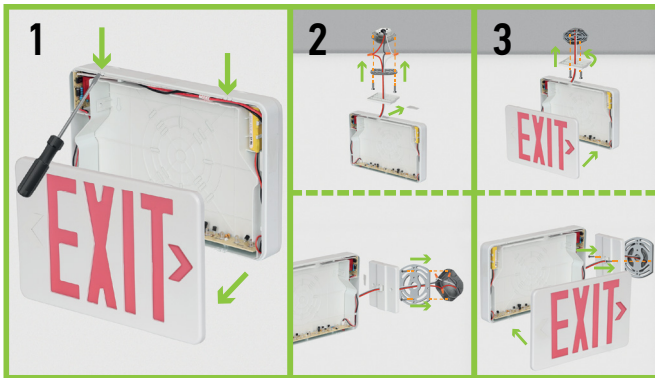
Risk of electric shock: This product must be installed in accordance with the applicable installation code by a person familiar with the construction and operation of the product and the hazards involved.

Risk of Fire: Minimum 194°F supply conductors. Consult a qualified electrician to ensure correct branch circuit conductor.

ASD® assumes no responsibility for claims arising out of improper or careless installation or handling of this product.

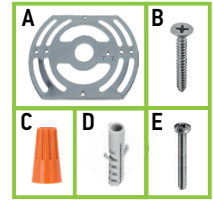
CEILING OR SIDE-WALL INSTALLATION:

1. Remove the faceplate, detach the needed arrow(s), and for double-sided use replace the backplate with the second faceplate (double-sided models only for ceiling/end mount). Connect the backup battery lead to the PCB.
2. Remove the top/side access caps. Pull supply wires through the J-box plate, then attach the plate to the junction box with screws (not included). Feed fixture wires through the chosen hole and canopy nose. Insert the canopy into the frame opening, rotate 90°, and lock into place.
3. Connect wires with nuts: for 120V, black to black, white to white; for 277V, red to red, white to white. Cap unused wires, push them back in to the box, then secure the canopy with screws. Snap the faceplate(s) back, restore power, and allow 24 hours for the battery to charge.



PACKAGE CONTENTS:

Description	Quantity
LED Emergency Lights	1
Mounting plate (A)	1
Self-taping screw (B)	2
Wire nut (C)	3
Anchor (D)	2
Mounting screw (E)	2
Box	1



BATTERY REPLACEMENT:

This fixture uses a Ni-Cd Rechargeable AA700 mAh 1.2 V battery.

To remove the battery:

1. Bend the battery catches away from the battery and remove the battery from the housing.
2. Disconnect the battery leads from the board terminal.
3. Connect the new battery to the board terminal.
4. Place the new battery in the battery location and ensure it is seated behind the battery catches.

TROUBLESHOOTING

Problem	Possible cause	Solution
The LED charge indicator does not illuminate	AC power supply is off	Ensure the unit has AC power supply. Restore the power at the breaker/fuse box.
	The unit is incorrectly wired	Ensure the unit is wired correctly.
	The battery isn't connected	Ensure the battery is connected.

MAINTENANCE

NOTE: National Electric Code (NEC) and NFPA life safety code regulations require that routine tests need to be performed.

TESTING OPERATION:

With AC Power applied to the unit, the EXIT sign and A/C Power LED indicator should illuminate. When pushing the TEST button, the LED indicator should turn off, the EXIT sign will remain illuminated.

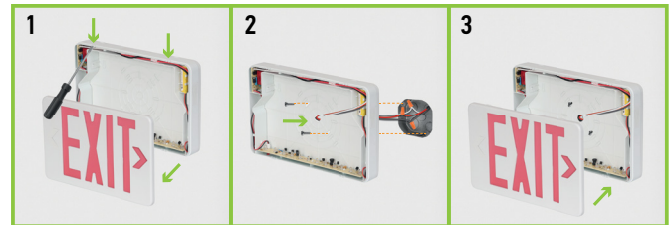
TESTING THE BATTERY:

Test the unit's battery once per month. Additionally, every 12 months, a full 90-minute test should be performed. While disconnected from the main power supply, the unit should illuminate for a minimum of 90 minutes on battery back up power.



WALL INSTALLATION:

1. Remove the faceplate with a screwdriver, detach the needed arrows, and connect the backup battery lead to the PCB.
2. Punch out the correct mounting pattern and wire hole on the backplate to match the junction box. Feed supply wires through and secure the backplate or frame to the box with screws (not included).
3. Connect wires with provided nuts: for 120V, black to black, white to white; for 277V, red to red, white to white. Cap unused wires, snap the faceplate onto the frame, restore power, and allow 24 hours for the battery to charge.



For most up-to-date spec sheets please refer to asd-lighting.com

ASD LIGHTING CORP

E-mail: orders@asd-lighting.com | Web site: www.asd-lighting.com

