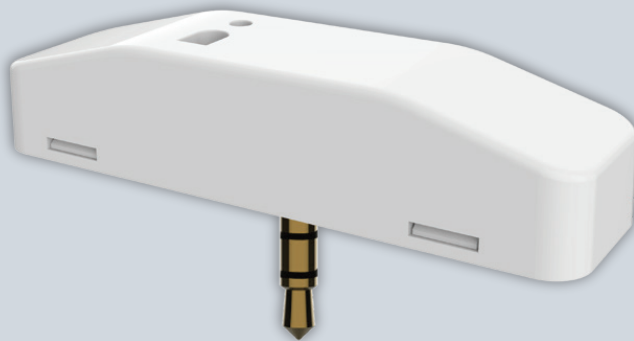


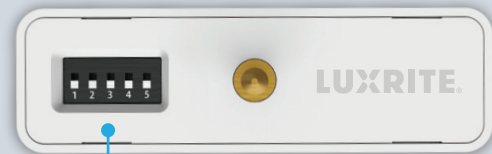
ADJUSTABLE MICROWAVE BI-LEVEL 1P SENSOR LINEAR FIXTURE COMPATIBLE



LR25375
ADJUSTABLE AUDIO JACK
STANDARD SENSOR
T-PIN



WORKS WITH:
LR25189
MW BI-LEVEL
REMOTE



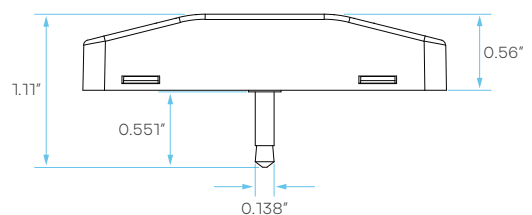
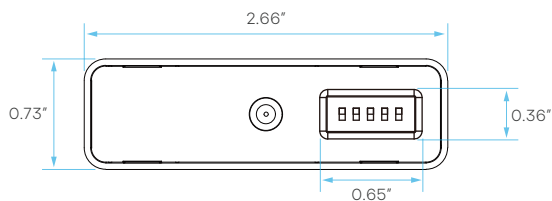
ADJUSTABLE DIP
SWITCH ON THE BACK



GENERAL

MODEL	DESCRIPTION	POWER	INPUT VOLTS	DIMMING	INSTALL HEIGHT	DETECTION RANGE	DETECTION ANGLE
LR25375	LEDSNS/A/LINEAR/MW/BILEVEL/1P	<0.5W	10-15V	0-10V	13"FT	22.97"FT	30-150°

DIMENSIONS



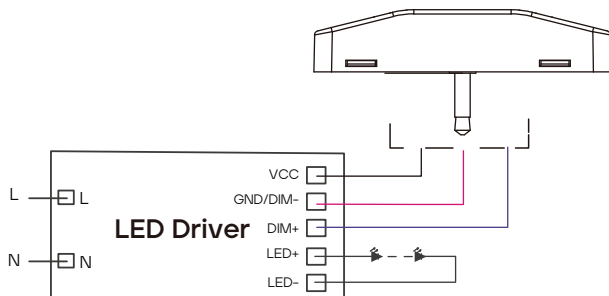
SPECIFICATIONS

Input Voltage	DC 10-15V
Input Current	<30mA
Stand-by Power	DC10V@<0.5W
Control Method	DIM 0-10V
Frequency	5.8GHz±75MHz
Microwave Power	<0.3mW
Detection Angle	30-150° (Without Diffuser)
Mounting Height	<4m/13ft
Detection Range	Radius: 9.84-22.97ft (3-7m)
Working Temp	-13°F to 140°F (-25°C to +60°C)
IP Rating	IP20
Warranty	5 year warranty

PARAMETERS

Control Device	Remote Control LR25189 (*Sold Separately) & DIP Switch
Detection Area	Remote Control Only: 25%/50%/75%/100%
Hold Time	Remote Control: 5s/30s/1min/3min/5min/10min/20min/30min DIP Switch: 5s/5min
Daylight Threshold	Remote Control: Disable/400Lux/350Lux/300Lux/250Lux/200Lux/120Lux/ 80Lux/50Lux/30Lux/10Lux/2Lux DIP Switch: Disable/50Lux
Standby Period	Remote Control: 0s/10s/30s/1min/5min/10min/30min/60min/+∞ DIP Switch: 5min/+∞
Standby Dimming Level	Remote Control: 10%/20%/30%/50% DIP Switch: 0%/20%
Sensing Mode	DIP Switch: Sensor Enabled / Sensor Disabled
Manually Dimming Play	Function supported, 10-100% in manual mode, 60%-100% in sensor mode.

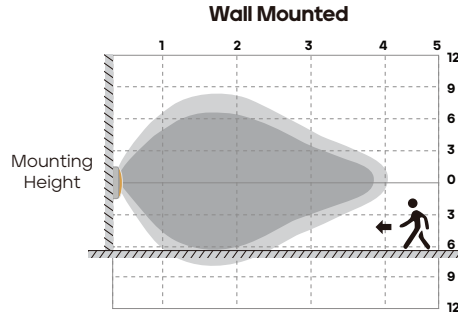
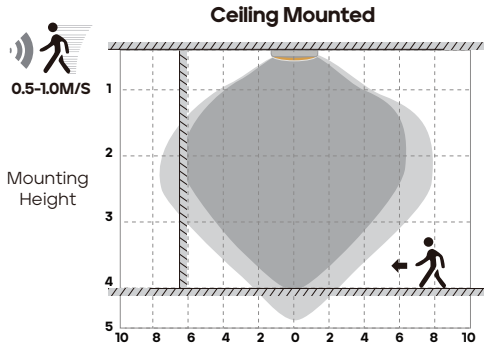
WIRING DIAGRAM



DEFAULT SETTINGS

REGULAR-VERSION
1. Detection Area: 100%
2. Holdtime: 5S
3. Daylight Threshold: Disable
4. Standby Period: 0S
5. Standby Dimming Level: 10%

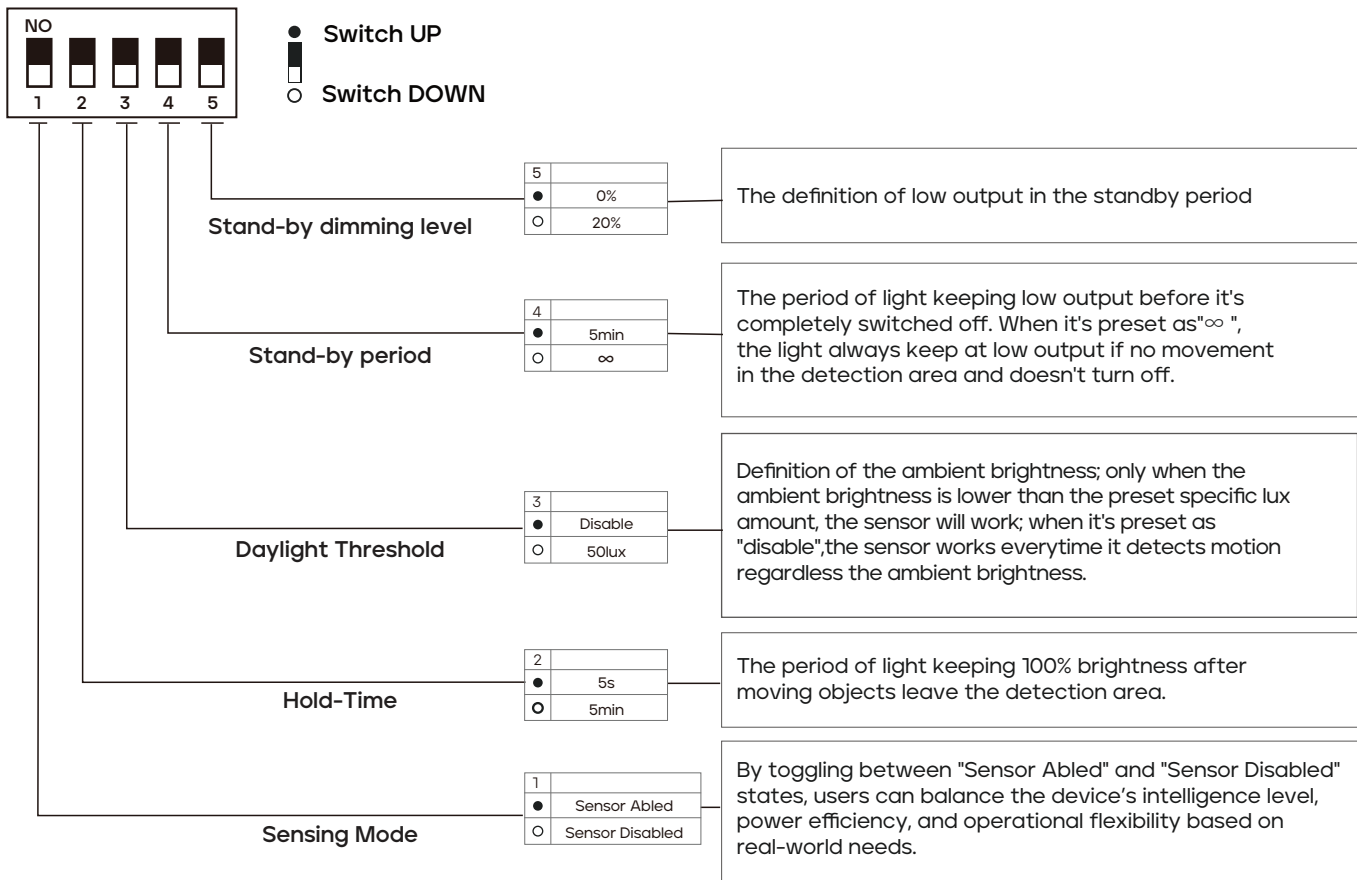
DETECTION COVERAGE



Highest mounting height is 13.2^{FT} (4m)
This figure indicates the maximum distance at the highest mounting height with 100% sensitivity.

- Well Detected Area
- Possibly Detected Area

DIP SWITCH

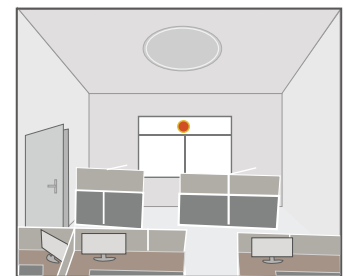
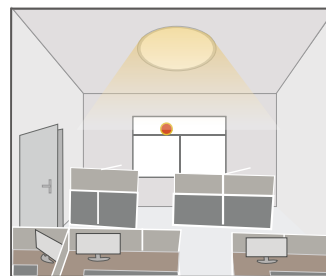
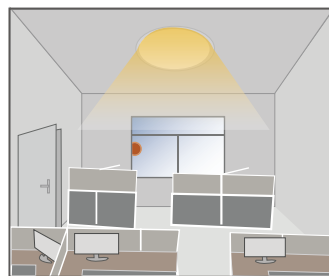
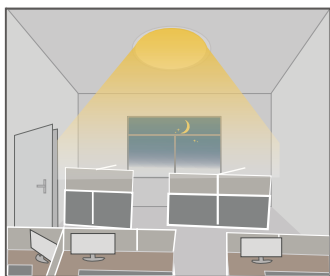
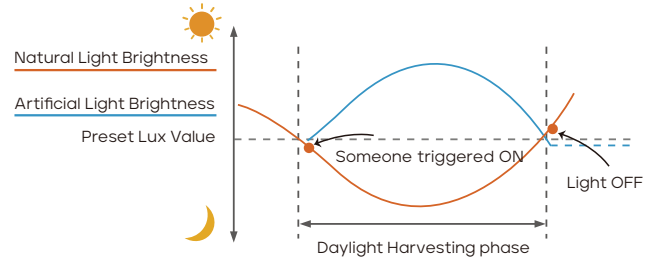


PERFORMANCE

1. DAYLIGHT HARVESTING

Please follow below setting steps to perform this function:

1. Stay in SENSOR MODE
2. STANDBY PERIOD as OS
3. Regular-Version: DAYLIGHT as any of 50LUX, 80LUX, 200LUX, 250LUX, 300LUX, 350LUX, 400LUX.
4. Press DAYLIGHT HARVESTING button to ON



When ambient brightness is lower than preset lux level, sensor will turn ON light automatically and keep dimming according to the change of the ambient brightness; when outside is getting darker, the inside will be brighter, and brighter darker.

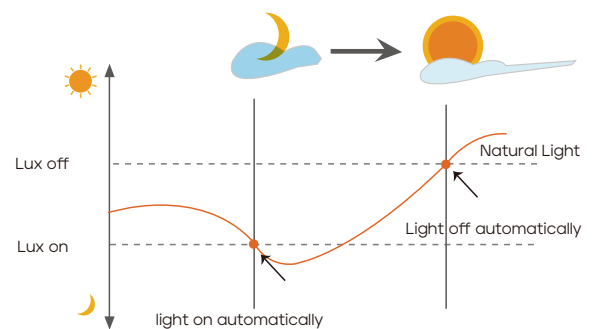
Light OFF when ambient brightness becomes higher than the preset lux level.

2. DUSK/DAWN FUNCTION

The sensor is able to differentiate artificial light brightness from natural light after installed inside the fixture, and automatically turn off light when ambient brightness exceeds preset lux level.

Please follow below setting steps to perform this function:

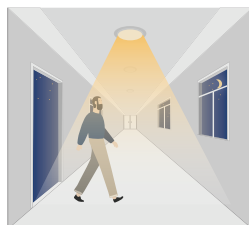
1. STANDBY DIM LEVEL as any of 10% 20% 30%
2. STANDBY PERIOD as infinite
3. Regular-Version: DAYLIGHT as any of 30LUX, 50LUX, 80LUX, 120LUX, 200LUX, 250LUX, 300LUX, 350LUX, 400LUX.



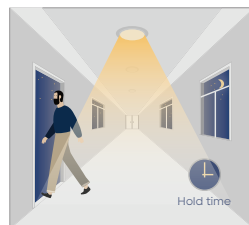
3. WITH DUSK/DAWN FUNCTION



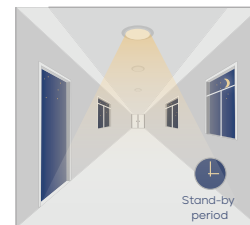
With insufficient ambient brightness, sensor turns on light and keeps it at standby dimming level even if there is no motion or presence.



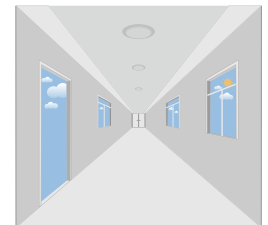
When sensor detects motion or presence it will bring the light level up to 100%.



After motion is no longer detected, fixture remains at 100% for hold time.



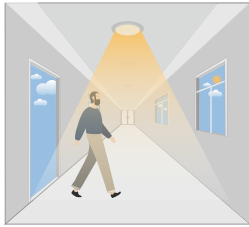
After pre-set hold time period it will dim light to standby dimming level again and always keep it.



With sufficient ambient brightness, sensor will turn OFF light automatically.

PERFORMANCE

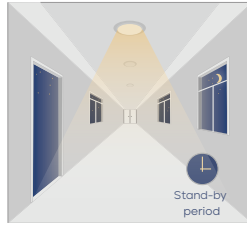
4. WITHOUT DAYLIGHT DISABLED



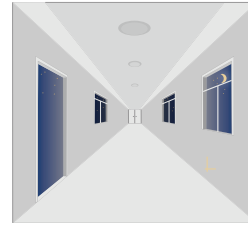
Sensor turns ON light when motion is detected.



Sensor keeps for a hold time period after motion leaves

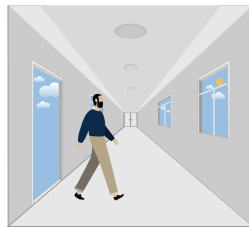


Sensor dims light to standby dimming level after hold time if there is still no motion

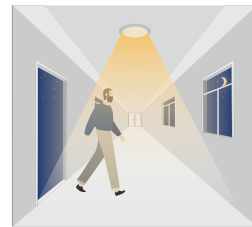


Sensor turns OFF light after standby period

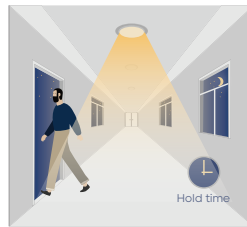
5. WITH DAYLIGHT THRESHOLD



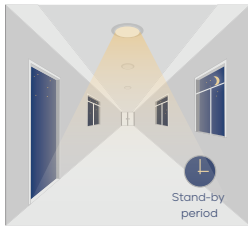
With sufficient daylight the sensor keeps light OFF even motion gets detected



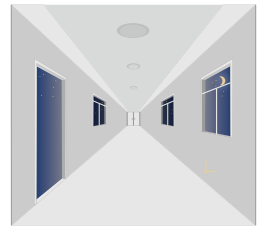
With insufficient daylight, the sensor turns light ON when motion gets detected



After there's no motion detected, the sensor keeps light ON 100% for holdtime.



After hold time, sensor dims light to standby dimming level for standby period. if the standby period has been set as 0s, sensor turns light OFF automatically after holdtime.



The sensor turns OFF light automatically after the stand by period when there's no motion detected.