

Step 1

Install loudspeaker in accordance with speaker manufacturer's instructions.
The speaker can be installed in an opening having a max. diameter of 6".



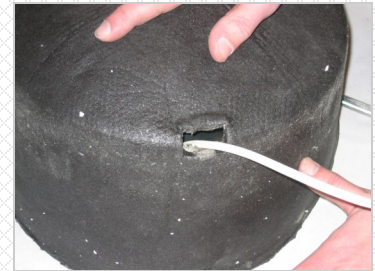
Step 2

Place Tenmat FF109 cover over the loudspeaker.
If working with tile bridge and rail, slit the cover to fit over the hanger bars.
Cut four slits with a size up to 1" max.



Step 3

Electrical wiring leading to and from the speaker may penetrate the cover. When this occurs, caution is to be used to not damage the cover.



Step 4

Put the cover on top of the loudspeaker. Check for secure fit, and make sure the cover overhangs the hanger bars (if working with tile bridge and rail).
The FF 109 Speaker Cover must fit flush with the back surface of the drywall board.



Ensure the cover fits your chosen in-ceiling speaker.

FF109-FRSC Overall Dimensions:

- Inside Diameter 13"
- Inside Height 7 3/8"



WARNING: BE SURE THE ELECTRICITY TO THE SYSTEM YOU ARE WORKING ON IS TURNED OFF; EITHER THE FUSE REMOVED OR THE CIRCUIT BREAKER SET AT OFF.

CONTAINS STONE WOOL INSULATION

Stone fibers may cause temporary mechanical irritation to the skin, throat, nose and eyes.

FIRST AID

Skin

If irritation occurs, do not rub or scratch. Rinse under running water prior to washing with mild soap and water. Consult a physician if irritation persists.

Throat and Eyes

If irritation occurs, flush eyes with water and/or drink water to clear throat. Do not rub the eyes. Consult a physician if irritation persists.

PRECAUTIONS

- Wear long sleeve, loose fitting clothing, gloves and eye protection.
- For additional information, refer to the Material Safety Data Sheet (MSDS).