

DOUBLE FLANGE BUNDLE

Recessed Mount Extrusion Bundle

The double flange is a traditional recessed mount extrusion that features flanged edges that masks the recessed edge making for a clean and modern install. With slightly more regression, blend and eliminate potential LED dotting when smooth evenly diffused lighting is a must.

- Perfect option for new construction or remodel applications
- Slightly more regressed profile that helps eliminate LED dotting
- Pre-drilled, countersunk holes
- Frosted, UV & flame resistant lens protects light source while evenly diffusing light
- Anodized aluminum provides excellent heat dissipation
- Field cuttable extrusion and lens
- Compatible with 12mm wide tape light

Available Finishes

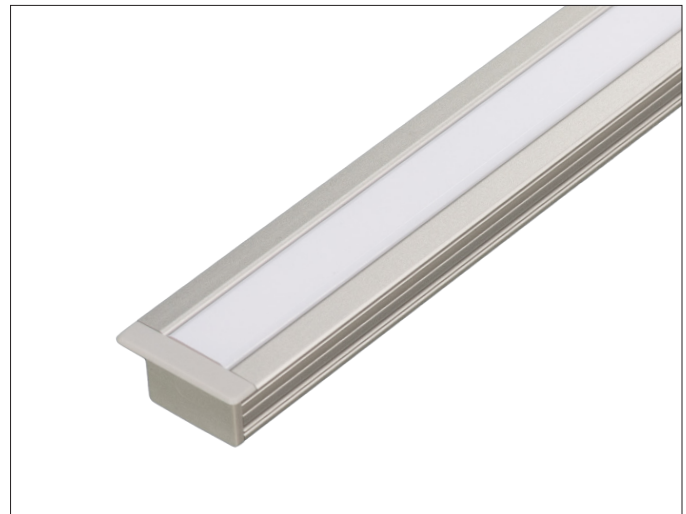
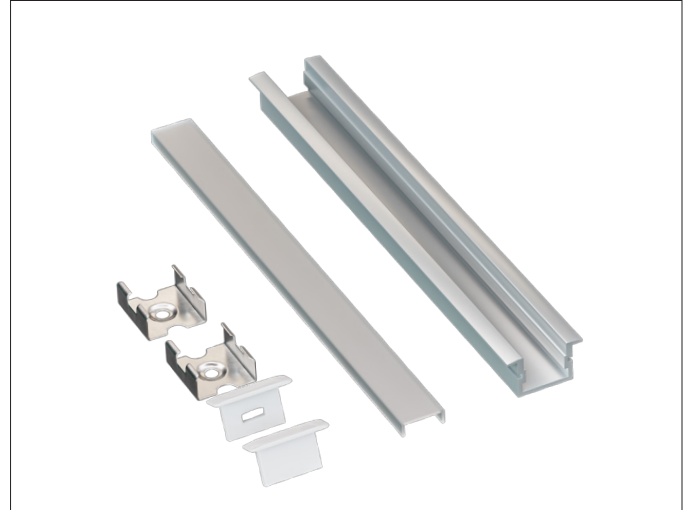


Anodized Aluminum

Compatible Tape Light

- Single Color (10mm)
- Tunable CCT (10mm)
- RGBW / RGBTW (12mm)

PROJECT:
TYPE:
LOCATION:
CATALOG NUMBER:



DOUBLE FLANGE BUNDLE ORDERING INFORMATION

ITEM NUMBER	DESCRIPTION
PE-DBLF-2M-BNDL1	2M Double Flange Single Bundle Includes: (1) 2M Double Flange Extrusion, (1) 2M High Grade Diffusion Lens, (1) End Cap w/ Hole, (1) End Cap w/o Hole, (6) Mounting Clips

DOUBLE FLANGE DIMENSIONS

