

3" INTERCHANGEABLE ARCHITECTURAL MODULE - 5CCT SELECT LR25230, LR25231, LR25232, LR25233

IMPORTANT SAFETY INSTRUCTIONS

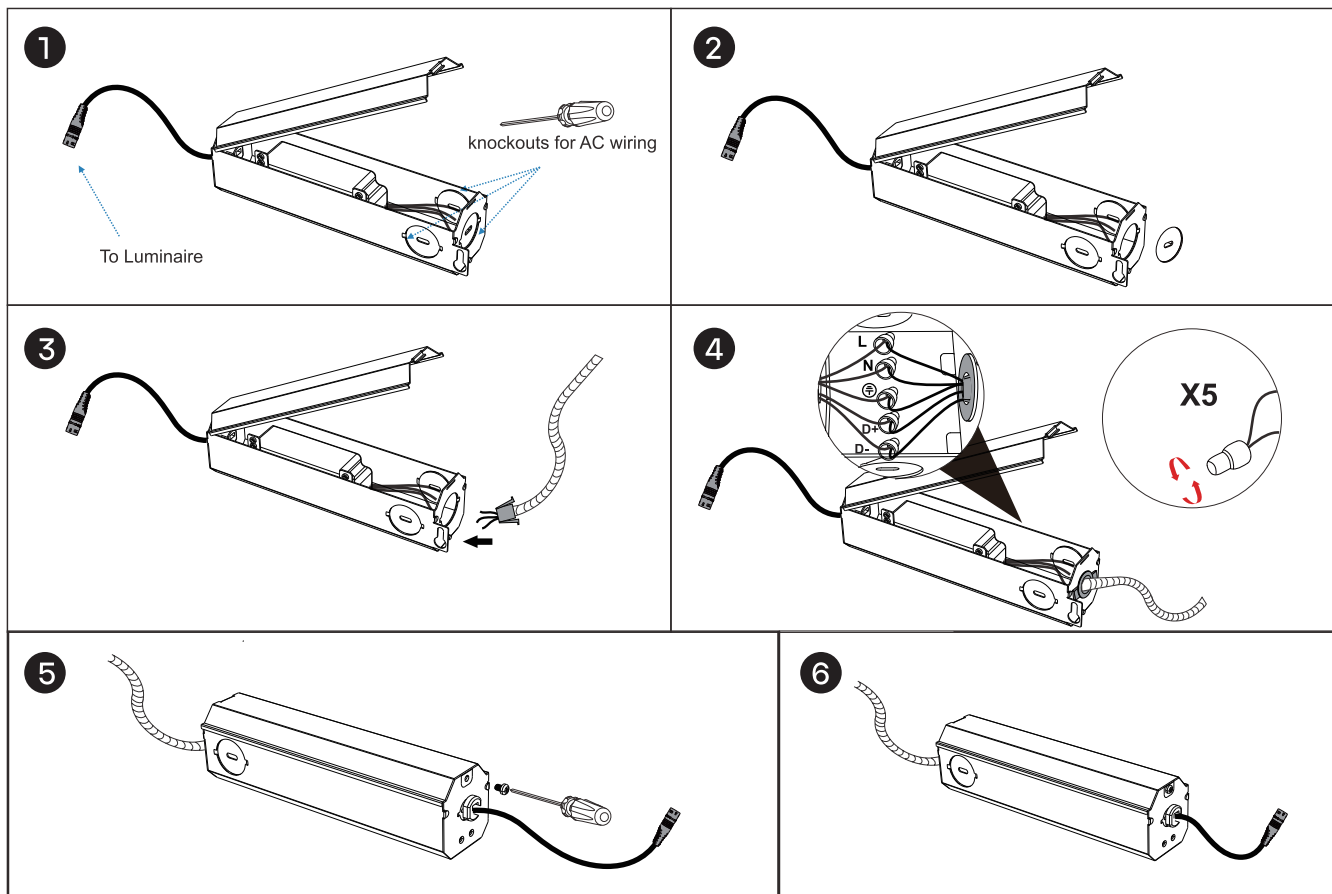
- TURN OFF electrical power before modifying the lighting system in any way.
- DO NOT install while power leads are energized.
- Install per national installation and accidental prevention regulations.
- The side clearance between the edge of the metal box and parts of the building must be at least 50mm.
- DO NOT conceal or extend exposed conductors through a building wall.
- DO NOT install the system in wet locations.
- To reduce the risk of fire and burns, DO NOT install this lighting system where the exposed bare conductors can be shorted or contact any conductive materials.
- To reduce the risk of fire and overheating, make sure all connections are tight.
- DO NOT install any luminaire closer than 6" (152mm) from any curtain, or similar combustible materials.

Type Non-IC Recessed
Access above ceiling required
Inherently protected
Suitable for dry location

WARNING

- Not suitable for use in damp or wet locations.
- Do not install output conductors longer than 500mm.
- Do not connect two or more power supplies in parallel.
- Do not install any part of this system less than 7 ft (2 m) above the floor.

SAVE THESE INSTRUCTIONS

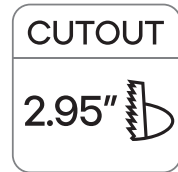


3" INTERCHANGEABLE ARCHITECTURAL MODULE - 5CCT SELECT LR25230, LR25231, LR25232, LR25233

Please read these instructions carefully before commencing installation and retain for future reference. If in doubt, we advise that you consult a qualified electrician to install the product. These products must not be modified. If any modification is made, it will void the warranty and may render the product unsafe. All electrical installations must be carried out according to national electrical code & local regulations.

IMPORTANT SAFETY NOTES

1. Switch off the electricity at the main before commencing installation or lamp change and (if a fuse box is used) remove the appropriate circuit fuse to avoid accidental switching on the main supply.
2. Connect to a 120-277V supply in accordance with relevant electrical standards.
3. Make sure all connections are tight with no loose strands.
4. Ensure fire regulations are not breached when fitting your lights.



WARNING

1. For indoor use only.
2. Please ensure that the packaging is disposed of in a safe environment.
3. If cable is defective, do not use or exchange the cable.
4. Do not connect the light engine to the main voltage directly.
5. Do not look directly at the powered on light.
6. We do recommend that a qualified electrician should do the installation of the products.

