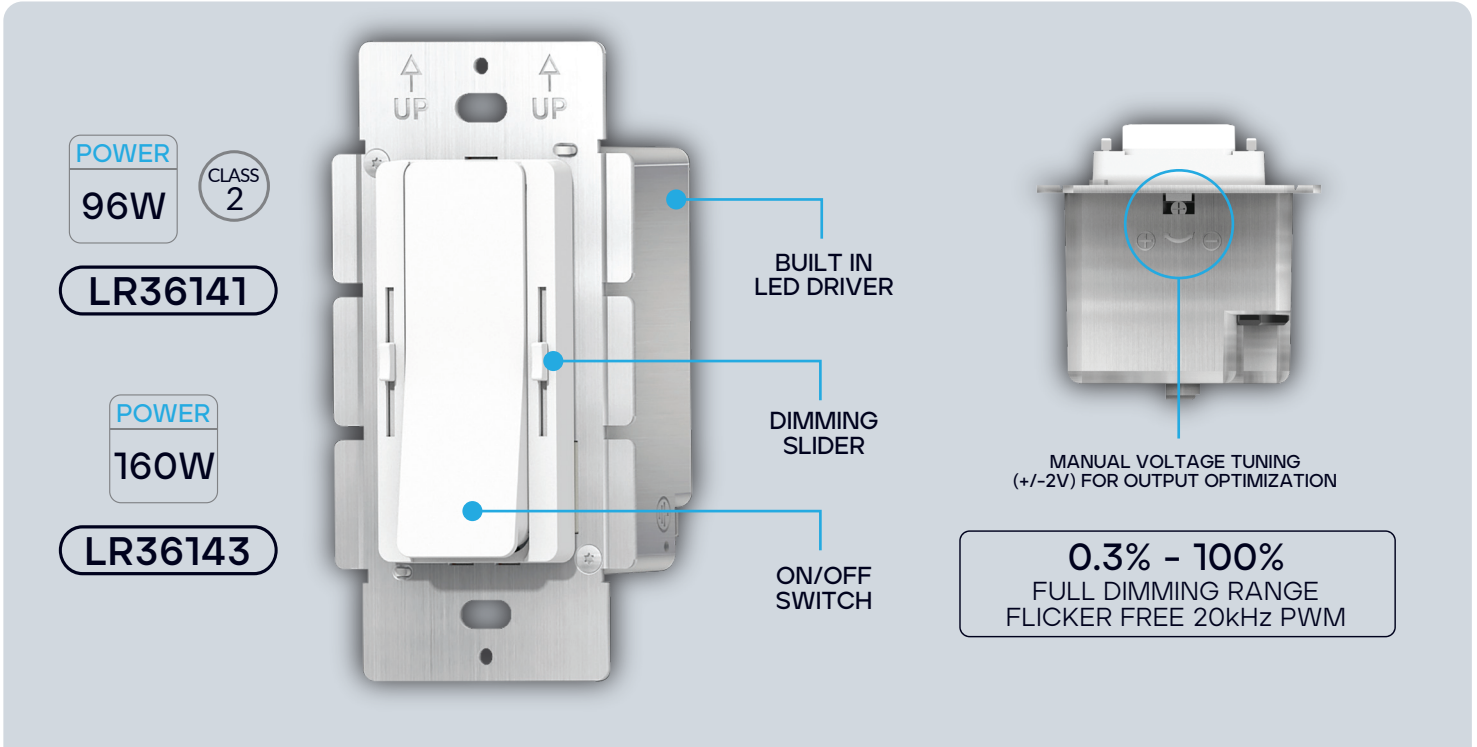


MICRO DRIVER + DIMMER + CCT 96W, 160W



POWER
96W CLASS 2

LR36141

POWER
160W

LR36143

BUILT IN LED DRIVER

DIMMING SLIDER

ON/OFF SWITCH

MANUAL VOLTAGE TUNING (+/-2V) FOR OUTPUT OPTIMIZATION

0.3% - 100%
FULL DIMMING RANGE
FLICKER FREE 20kHz PWM

LED DIMMER + CCT SLIDER + MICROELECTRONIC DRIVER

SINGLE POLE/3-WAY

DC OUTPUT
24V

AC INPUT
120V

CONSTANT VOLTAGE

3 YEAR WARRANTY

FEATURES

Output:	Constant Voltage
Input Range:	120VAC
PFC design:	Built-in active PFC function
Protections:	Short circuit/ Over load/ Over temperature
Heat dissipation:	Cooling by free air convection
Waterproof performance:	For dry and damp locations (US)
Design features:	1) Fine-tune output voltage can be adjusted slightly
	2) Preset dimmer with on/off function
	3) 3-Way switches
	4) Eliminated compatibility issues between drivers and switches
Dimming range:	0.3%-100%
Application:	LED lighting
Others:	20KHZ PWM output with dimming curve is a gamma 2.2 curve Flicker-free

MICRO DRIVER + DIMMER + CCT 96W, 160W

SPECIFICATIONS

		LR36141	LR36143
		LED/DM/MDRV/CCT/CV2/96/24V/120V	LED/DM/MDRV/CCT/CV/160/24V/120V
CERTIFIED & COMPLIANT		UL/cUL/FCC/Class P/SELV/RoHS	UL/cUL/FCC/Class P/SELV/RoHS
OUTPUT	DC Rate Voltage	24V (24V-26V adjust by knob)	24V (24V-26V adjust by knob)
	Voltage Tolerance	±0.5V	±0.5V
	Load Regulation	≤1%	≤1%
	Line Regulation	≤0.5%	≤0.5%
	Rated current	4A	6.67A
	Rated power	96W	160W
INPUT	Voltage Range	120VAC	120VAC
	Frequency Range	60Hz	60Hz
	Power Factor @ full load	≥0.99	≥0.99
	THD(Typ.) @ full load	≤10%	≤10%
	Efficiency @ full load	91.0%	94.5%
	AC Current (Max.)	0.9A	1.5A
	Inrush Current (Typ.)	50A, 150us@50% Ipeak	54A, 290us@50% Ipeak
	Leakage current	<0.5mA	<0.5mA
PROTECTION	Short Circuit	Hiccup mode, recovers automatically after fault condition is removed	
	Over Load	≥110% Hiccup mode, recovers automatically after fault condition is removed	
	Over temperature	Shell surface temperature 100°C±10°C shut down o/p voltage, automatically recover after cooling	
ENVIRONMENT	Working TEMP.	-40~+60°C (see below derating curve)	
	Working Humidity	20 - 95%RH non-condensing	
	Storage TEM.,Humidity	-40 - +80°C,10 - 95% RH non-condensing	
	TEMP.coefficient	±0.03%/°C(0 - 50°C)	
	Vibration	10~500Hz, 2G 12min./1 cycle, period for 72 min. each along X,Y,Z axes	
SAFETY & EMC	Safety standards	UL8750 CAN/CSA-C22.2 No.250.13 (US)	
	Withstand voltage	I/P-O/P:1.8KVAC I/P-F/G:1.8KVAC O/P-F/G:0.5KVAC (US)	
	Isolation resistance	I/P-O/P:100MΩ / 500VDC / 25°C / 70% RH	
	EMC Immunity	FCC/ICES do not request this test (US)	
	EMC Emission	FCC Part15 Subpart B ANSI C63.4:2014 (US)	
PACKAGING	Net Weight	0.55lb (0.25kg)	
	Dimension	4.134"x2.126"x1.996" (105*54*51mm)	
	Case Qty.		
NOTES	1. All parameters NOT specially mentioned are measured at 120VAC input, rated load and 25°C of ambient temperature.		
	2. Tolerance: includes set up tolerance and load regulation .		

MICRO DRIVER + DIMMER + CCT 96W, 160W

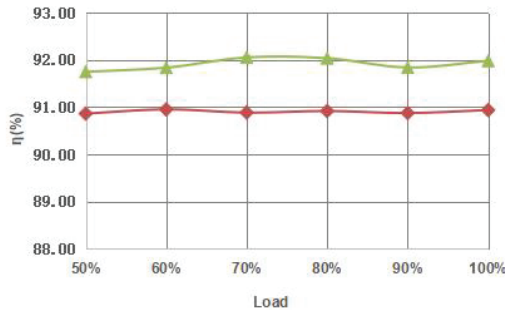
PERFORMANCE

POWER

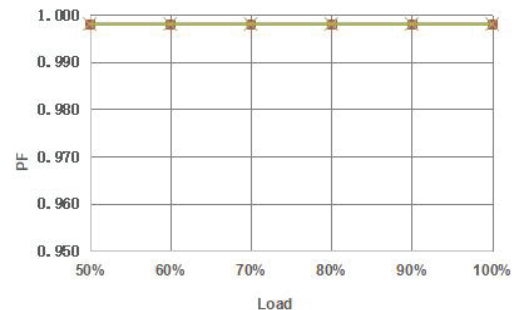
96W

LR36141

EFFICIENCY CURVE
(EFFICIENCY VS OUTPUT LOAD)



POWER FACTOR CURVE

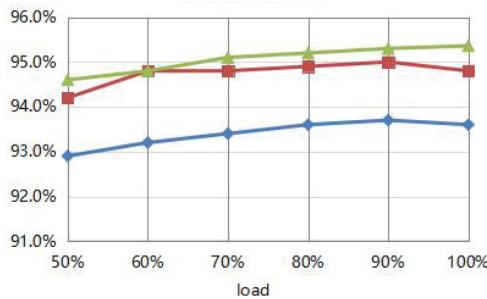


POWER

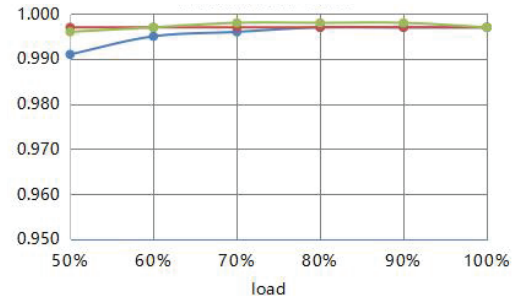
160W

LR36143

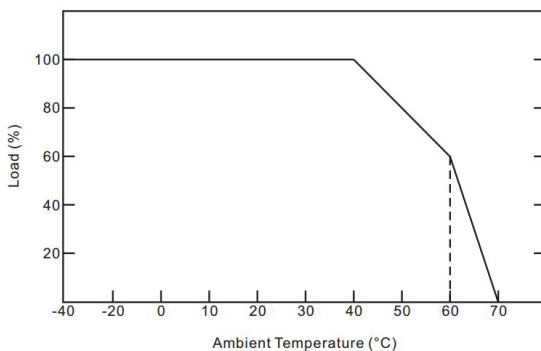
EFFICIENCY CURVE
(EFFICIENCY VS OUTPUT LOAD)



POWER FACTOR CURVE



DERATING CURVE
(OUTPUT POWER VS AMBIENT TEMP)



PLEASE NOTE:

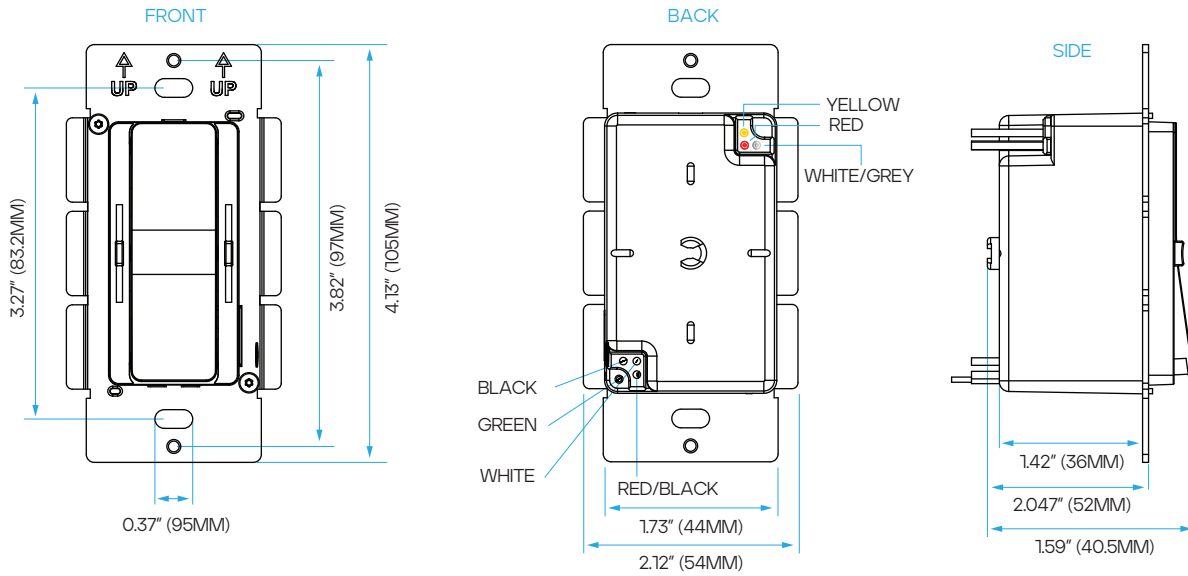
- To extend driver life, please refer to the Derating Curve and derate according to the temperature.
- The output current of the LED driver should be selected according to the rated current of the lamp and the ambient temperature. Normally, we recommend the power supply to reserve a certain amount of load to extend LED driver's life .

American Wire Gauge

Input wires	Black cable (L), Red black cable (L1) , White cable (N) and Green cable (FG) (4*18AWG)
Output wires	Red Cable (V+) , White/Gray Cable (CW-), Yellow Cable (WW-) (3*18AWG)

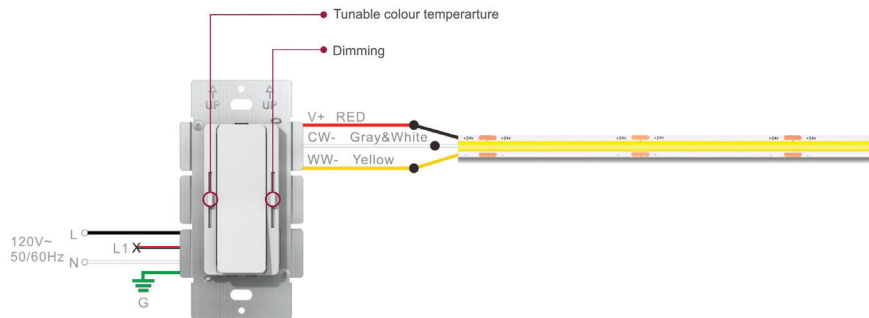
MICRO DRIVER + DIMMER + CCT 96W, 160W

DIMENSIONS



WIRING

SINGLE POLE WIRING



3-WAY WIRING

