



PL-C/T

8PL-C/T/COR/26V-3CCT/MF10/P/20/1

CorePro, LED, PL-C;PL-T, 8 W, Selectable, 3000 K, 3500 K, 4000 K, 975 lm, 1000 lm, 1050 lm, 30000 hour(s)

Philips PLED 4-pin & 2-pin lamps are an affordable LED solution to replace compact fluorescent lamps. The product provides a natural lighting effect for use in many lighting applications, and provides instant energy savings, making them an environmentally-friendly solution. Available as replacements for 13W, 26W and 32W compact fluorescent lamps.

Product data

General Information	
Cap-Base	G24q
Nominal lifetime	30,000 hour(s)
Switching Cycle	50,000
Lighting Technology	LED
Light Technical	
Color Code	3000/3500/4000
Beam Angle (Nom)	120 degree(s)
Luminous Flux	975 1,000 1,050 lm
Color Designation	3000/3500/4000
Correlated Color Temperature (Nom)	Selectable 3000 3500 4000 K
Luminous Efficacy (rated) (Nom)	131.00 lm/W
Color Consistency	<6
Color rendering index (CRI)	83
LLMF At End Of Nominal Lifetime (Nom)	70 %
All-in Type	All-in, Multi Color Temperature

Operating and Electrical	
Line Frequency	50 to 60 Hz
Input Frequency	50 to 60 Hz
Power Consumption	8 W
Lamp Current (Max)	75 mA
Lamp Current (Min)	30 mA
Wattage Equivalent	26 W
Starting Time (Nom)	0.5 s
Warm-up time to 60% light	0.5 s
Power Factor (Fraction)	0.9
Voltage (Nom)	120-277 V
UL Type	UL Type B
Temperature	
T-Case Maximum (Nom)	149 °F

PL-C/T

Controls and Dimming

Dimmable	No
----------	----

Mechanical and Housing

Bulb Finish	Frosted
Bulb Material	Plastic
Product Length	4-1/8 inch
Bulb Shape	PL-C; PL-T
Net Weight (Piece)	0.231 lb

Approval and Application

Energy Saving Product	Yes
Approval Marks	RoHS compliance UL certificate
EU RoHS compliant	Yes
Ambient temperature range	-4 to +113 °F

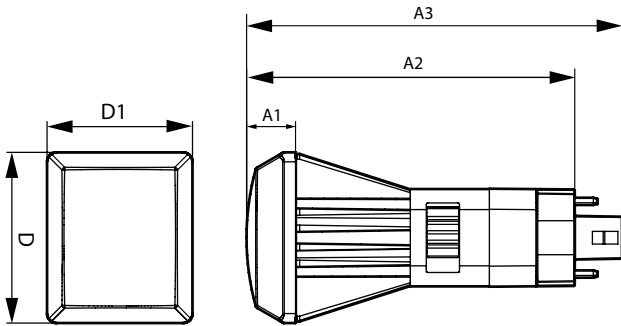
Application Conditions

can it be used in closed luminaires	Yes
-------------------------------------	-----

Product Data

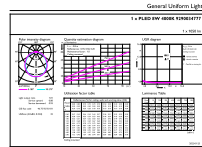
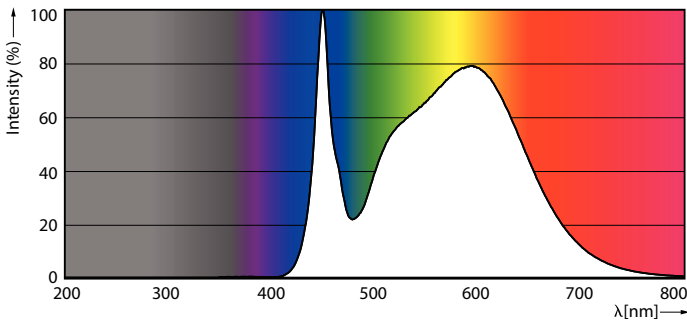
Order product name	8PL-C/T/COR/26V-3CCT/MF10/P/20/1
Full product name	8PL-C/T/COR/26V-3CCT/MF10/P/20/1
Order code	577908
Material Nr. (12NC)	929003477704
Numerator - Quantity Per Pack	1
EAN/UPC - Product/Case	046677577902
Numerator - Packs per outer box	20
EAN/UPC - Case	50046677577907

Dimensional drawing



Product	D1	D	A1	A2	A3
8PL-C/T/COR/26V-3CCT/MF10/P/20/1	1-13/16 inch	2-1/8 inch	5/8 inch	4-1/8 inch	4-11/16 inch

Photometric data

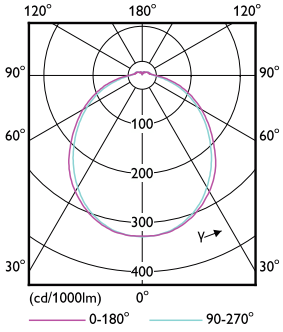


Spectral Power Distribution Colour - 8PL-C/T/COR/26V-3CCT/MF10/P/20/1

General uniform lighting - 8PL-C/T/COR/26V-3CCT/MF10/P/20/1

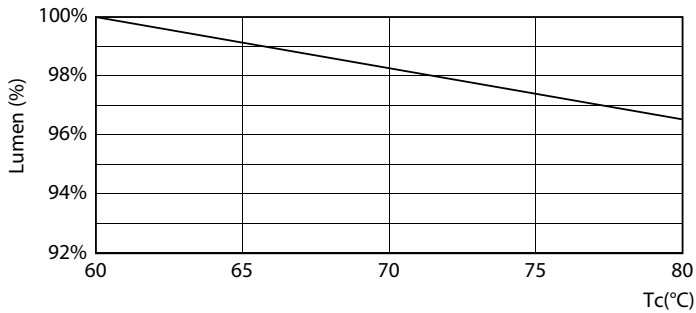
PL-C/T

Photometric data

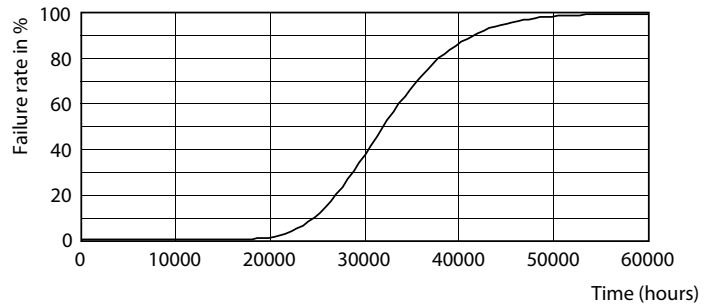


Light Distribution Diagram - 8PL-C/T/COR/26V-3CCT/MF10/P/20/1

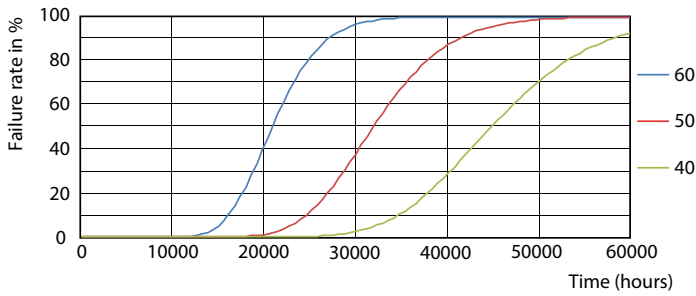
Lifetime



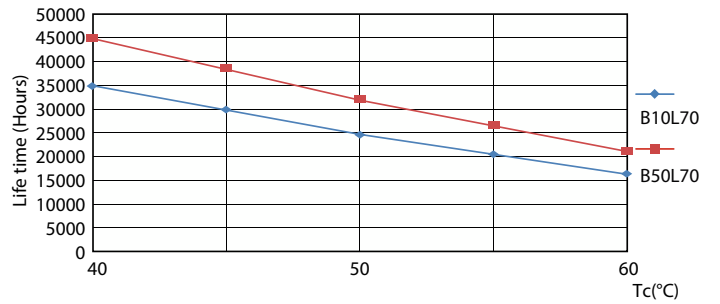
Lumen Maintenance Diagram - 8PL-C/T/COR/26V-3CCT/MF10/P/20/1



Life Expectancy Diagram



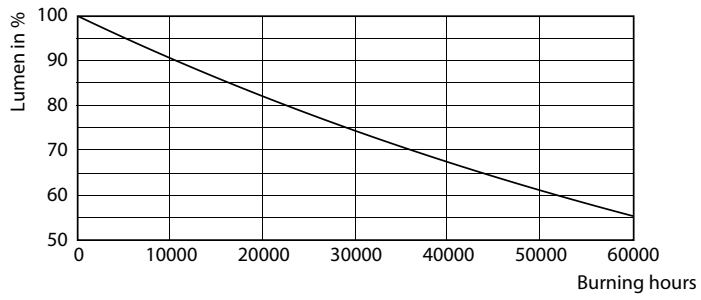
FailureRate



LifetimeVsTc

PL-C/T

Lifetime



Lumen Maintenance Diagram - 8PL-C/T/COR/26V-3CCT/MF10/P/20/1

