

# JB-Series | SoliDrive

**Constant Voltage Electronic LED Driver**  
 0-10V or Phase Dimming | Zone Multi-Channel Dimming

## Specification Sheet

The Junction Box (JB) Series delivers a multi-channel, specification grade solution for Class 2 LED drivers, perfect for multi-output residential and commercial lighting applications.

### Key Features

#### Professional appearance

- Covered, ventilated enclosure
- Fits between standard wall studs
- Can be surface mounted or recessed into finished walls
- Recessed cover option hides seams for clean installation

#### Saves Time

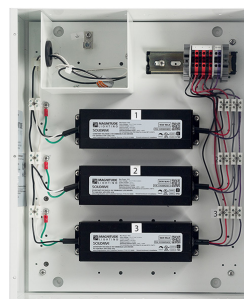
- Drivers installed and pre-wired
- Reduces installation time - adding profitability
- Future maintenance access with ease

#### Safety Matters

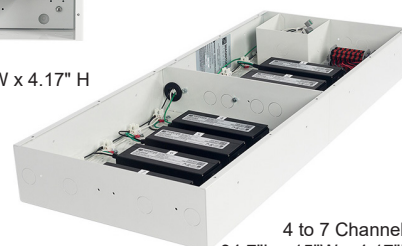
- Assembly is UL listed and Class 2 rated
- Simple post-work inspection

### Specification Overview

- Integrated junction box with multiple 3/4" tradesize (1.1" dia.) knockouts
- Class 2 LED drivers
- Dim-to-Dark to 0.1% minimum with either 0-10V or phase dimming
- Zone dimming and switching capable for all channels
- Input: 120 - 277VAC, 50/60Hz
- UL listed dry location
- UL2108 CSA C22.2 No. 250.0-08 certifications
- 5-year warranty



3 Channels  
 17.83" L x 15.00" W x 4.17" H



4 to 7 Channels  
 34.7" L x 15" W x 4.17" H

Note: All driver input wires (L/N) are home runs to the line voltage compartment.



SoliDrive is also available in:

- SoliDrive UL with Wiring Boxes
- SoliDrive UL with Wire Leads
- EZJ SoliDrive

Please refer to [www.magnitudeinc.com](http://www.magnitudeinc.com) for more details.

### ORDERING GUIDE

Type	No. of Channels	Driver Series	Dimming Type	Max Power Per Channel	Driver Type	Output	Mounting	Finish
JBZN	3 — 3 channel	CVD — SoliDrive <sup>1</sup>	0-10 Dimming	50 — 50W	R — Recognized	12 — 12VDC	R — Recessed	W — White
	4 — 4 channel	VOP — SoliDrive Pro-V <sup>2</sup>	Phase-Dimming	96 — 96W		24 — 24VDC	S — Surface	
	5 — 5 channel	CVN — SoliDrive <sup>3</sup>	Non-Dimming			36 — 36VDC		
	6 — 6 channel					48 — 48VDC		
	7 — 7 channel							

<sup>1</sup> CVD: 12VDC (50W), 24VDC (96W), 36VDC (96W), 48VDC (96W)  
<sup>2</sup> VOP: 24VDC (96W)  
<sup>3</sup> CVN: 12VDC (50W), 24VDC (96W), 48VDC (96W)

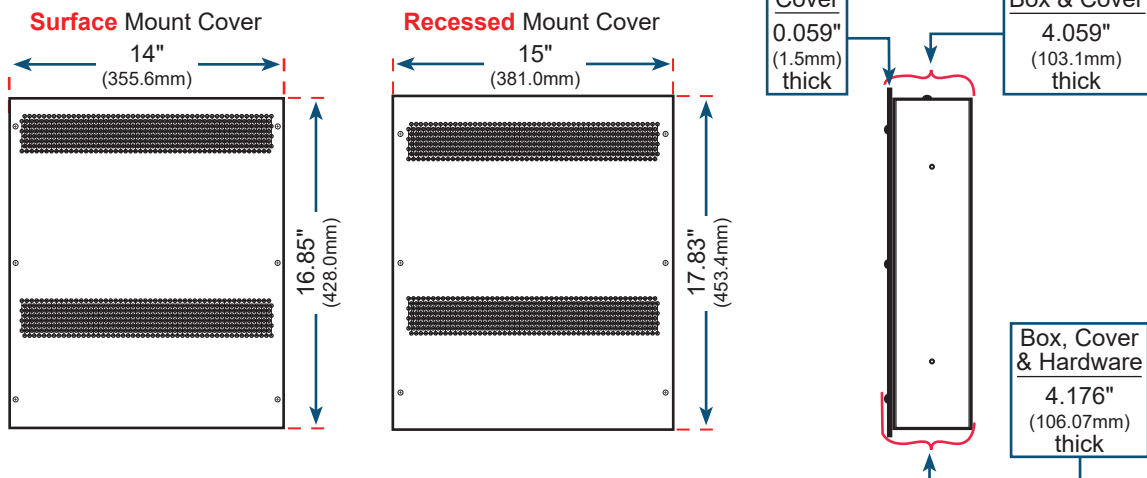
Up to 4 Channels		
	Surface Mount	Recessed Mount
Length	16.85" (427.99mm)	17.83" (453.0mm)
Width	14" (355.6mm)	15" (381.0mm)
Depth	4.17" (106.0mm)	4.17" (106.0mm)

Up to 7 Channels		
	Surface Mount	Recessed Mount
Length	33.70" (855.98mm)	34.70" (881.0mm)
Width	14" (355.6mm)	15" (381.0mm)
Depth	4.17" (106.0mm)	4.17" (106.0mm)

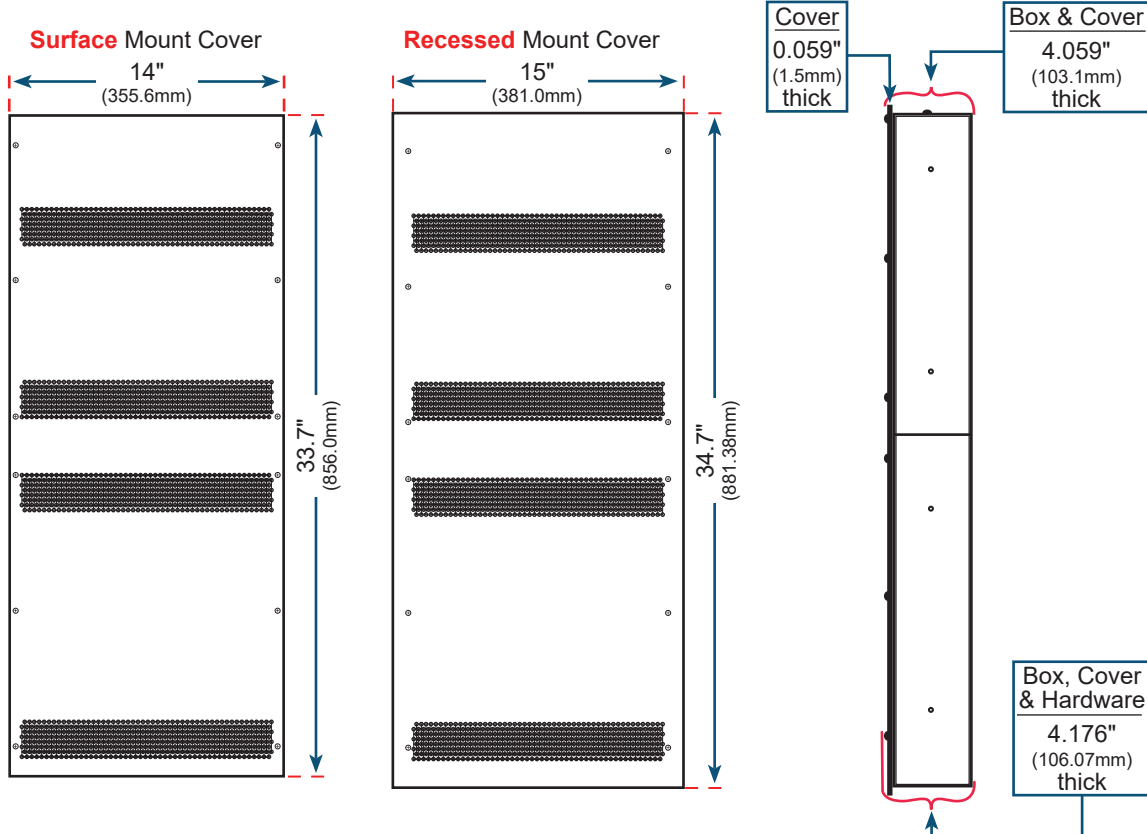
SPECIFICATIONS				
MAX LOAD	50W	96W	96W	96W
<b>INPUT</b>				
Input Voltage Range	120 to 277VAC $\pm$ 10%	120 to 277VAC $\pm$ 10%	120 to 277VAC $\pm$ 10%	120 to 277VAC $\pm$ 10%
Input Frequency	50 / 60Hz	50 / 60Hz	50 / 60Hz	50 / 60Hz
Input Current	0.96A Max per Channel	0.96A Max per Channel	0.96A Max per Channel	0.96A Max per Channel
Efficiency	>80%	>84%	>84%	>84%
Power Factor	0.95	0.91	0.95	0.95
<b>OUTPUT (Per Channel)</b>				
Max Load	50W	96W	96W	96W
Output Voltage @ Max Load	12.0 VDC	24.0 VDC	36.0 VDC	48.0 VDC
Output Current @ Max Load	4.2A	4.1A	2.7A	2.0A
<b>ENVIRONMENTAL</b>				
Operating Temperature	-30°C to +50°C (-22°F to 122°F)	-30°C to +50°C (-22°F to 122°F)	-30°C to +50°C (-22°F to 122°F)	-30°C to +50°C (-22°F to 122°F)
<b>DIMMING</b>				
Minimum Dimming Level	1%	1%	1%	1%
<b>PROTECTION</b>				
Circuit Breaker	Hiccup Mode Over Current Short Circuit	Hiccup Mode Over Current Short Circuit	Hiccup Mode Over Current Short Circuit	Hiccup Mode Over Current Short Circuit
<b>APPROVAL MARKINGS</b>				
Certificates / Approval Signs	UL8750 / UL2108	UL8750 / UL2108	UL8750 / UL2108	UL8750 / UL2108

### MECHANICAL DIAGRAMS

#### Up to 3 Channels

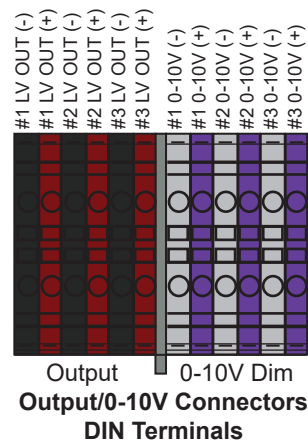
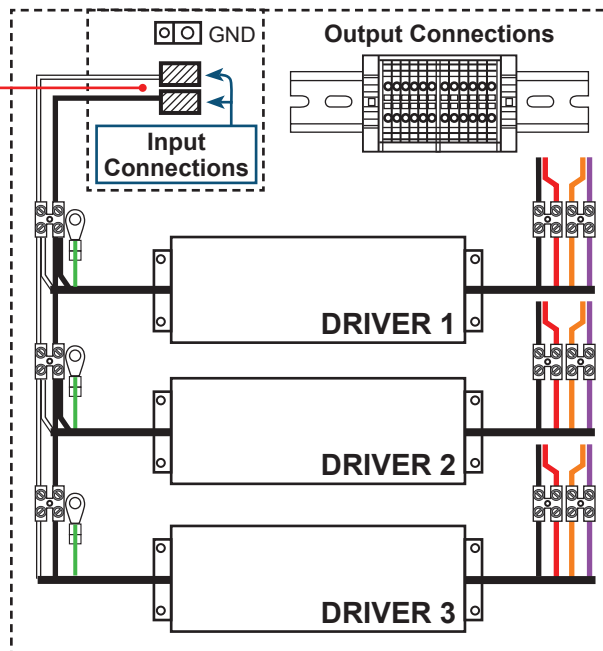


#### 4 to 7 Channels



### WIRING DIAGRAM | UP TO 3 CHANNELS

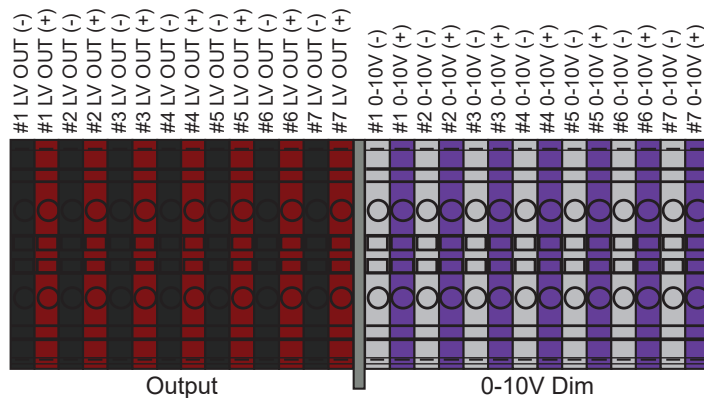
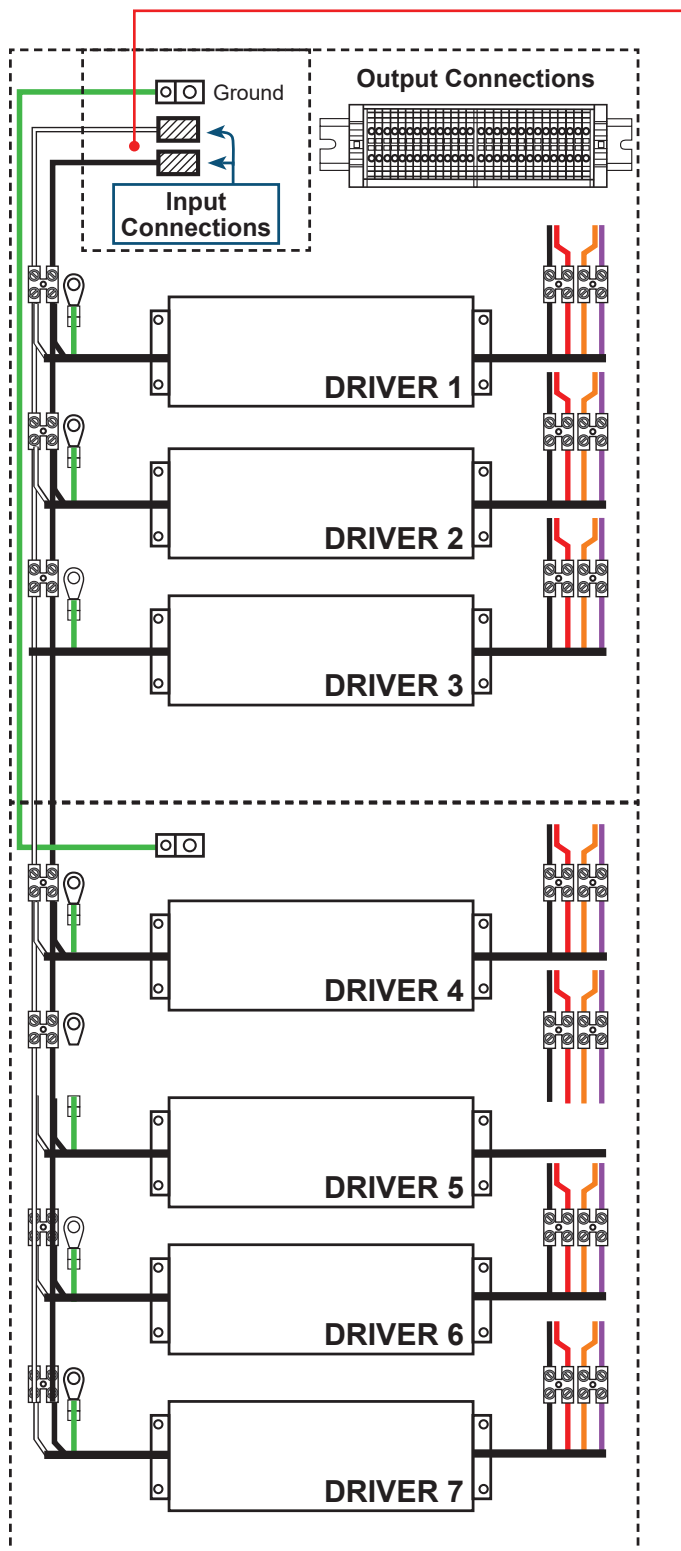
All input connections (L/N) are home runs to line voltage compartment. Input wires are bundled and labeled by channel.



#### - Important Notes -

- Output terminal block accepts 12 to 26 gauge wire
- 0-10V terminal connectors only included with SoliDrive CVD option

### WIRING DIAGRAM | 4 TO 7 CHANNELS



Output/0-10V Connectors  
DIN Terminals

All input connections (L/N) are home runs to line voltage compartment. Input wires are bundled and labeled by channel.

#### - Important Notes -

- Wiring diagram is typical for 4 to 6 channel version
- Input and output terminal blocks accept 12 to 26 gauge wire
- 0-10V terminal connectors only included with SoliDrive CVD option