

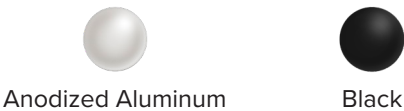
UNIVERSAL BUNDLE

Surface & Recessed Mount Extrusion Bundle

A universal go to for tape light extrusion installations with multiple mounting options, the universal is just that. Allowing for recessed or surface mount applications, the universal extrusion features a slightly regressed housing that helps eliminate tape light dotting while providing a slim but sleek final appearance.

- Universal extrusion for surface or recessed mounting
- Slightly more regressed profile that helps eliminate LED dotting
- Frosted, UV & flame resistant lens protects light source while evenly diffusing light
- Anodized aluminum provides excellent heat dissipation
- Field cuttable extrusion and lens
- Pre-Drilled, countersunk holes
- Compatible with 10mm wide tape light

Available Finishes



Compatible Tape Light

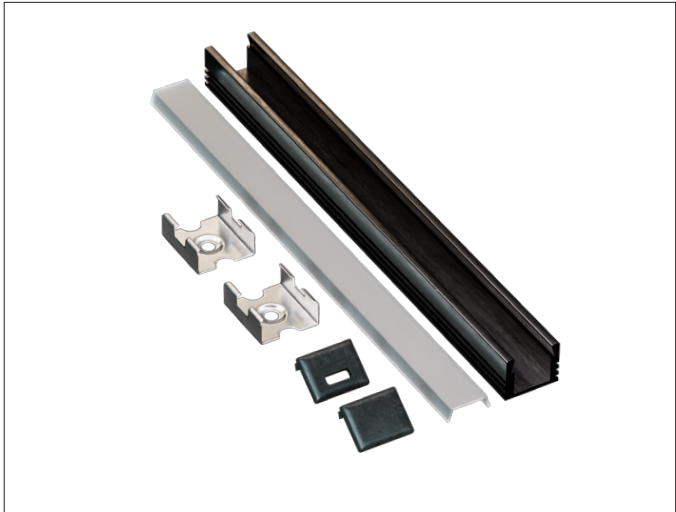
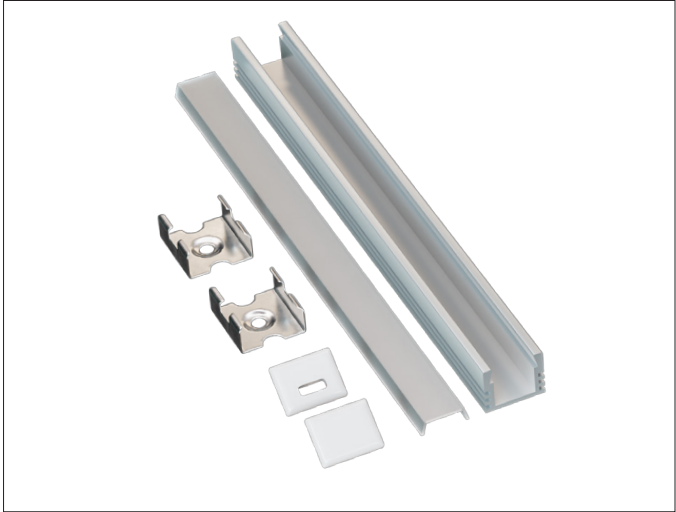
- Single Color (10mm)
- Tunable CCT (10mm)

PROJECT:

TYPE:

LOCATION:

CATALOG NUMBER:



UNIVERSAL BUNDLE ORDERING INFORMATION	
ITEM NUMBER	DESCRIPTION
PE-UNV-2M-BNDL1	2M Universal Single Bundle Includes: (1) 2M Universal Extrusion in Aluminum Finish, (1) 2M High Grade Diffusion Lens, (1) End Cap w/ Hole, (1) End Cap w/o Hole, (6) Mounting Clips
PE-UNV-BK-2M-BNDL1	2M Universal Single Black Bundle Includes: (1) 2M Universal Extrusion in Black Finish, (1) 2M High Grade Diffusion Lens, (1) End Cap w/ Hole, (1) End Cap w/o Hole, (6) Mounting Clips
PE-UNV-2M-BNDL5	2M Universal Five Unit Bundle Includes: (5) 2M Universal Extrusions in Aluminum Finish, (5) 2M High Grade Diffusion Lenses, (5) End Caps w/ Hole, (5) End Cap w/o Hole, (30) Mounting Clips

UNIVERSAL DIMENSIONS

