

ECONOMY 45 BUNDLE

Surface Mount Tape Light Extrusion Bundle

Intended for corner light applications, the Economy 45 features an angled design making it the perfect, economical option for accenting store window frames and other pass-through applications. Featuring angled edges and included lens, the Economy 45 is a practical and versatile extrusion for corner installations.

- 90° mount installation design featuring angled edges
- Best suited for window frames, display cases, and corner mounts
- Frosted, UV & flame resistant lens protects light source while evenly diffusing light
- Aluminum extrusion provides excellent heat dissipation
- Field cuttable extrusion and lens
- Compatible with 10mm wide tape light

Available Finishes

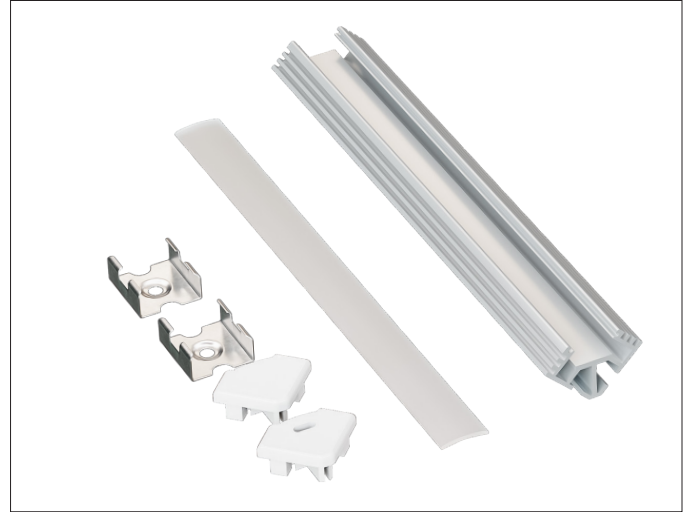


Aluminum

Compatible Tape Light

- Static White (10mm) < 4.6W/ft
- Tunable CCT (10mm) < 4.6W/ft

PROJECT:
TYPE:
LOCATION:
CATALOG NUMBER:



ECONOMY 45 BUNDLE ORDERING INFORMATION

ITEM NUMBER	DESCRIPTION
EE45-AAFR-2M-BNDL1	2M Economy 45 Single Bundle Includes: (1) 2M Economy 45 Extrusion, (1) 2M High Grade Diffusion Lens, (1) End Cap w/ Hole, (1) End Cap w/o Hole, (6) Mounting Clips

ECONOMY 45 DIMENSIONS

