

ECONOMY BUNDLE

Surface Mount Tape Light Extrusion Bundle

An economical go to for tape light extrusion installations, the Economy extrusion provides ample heat dissipation and diffuses light just enough to provide a great economical option. Use as a surface mount application when additional tape light protection is needed.

- Surface mount extrusion perfect for remodel applications
- Low profile housing design for limited space
- Frosted, UV & flame resistant lens protects light source while evenly diffusing light
- Anodized aluminum provides excellent heat dissipation
- Field cuttable extrusion and lens
- Compatible with 10-12mm wide tape light
- Pre-Drilled, countersunk holes

Available Finishes

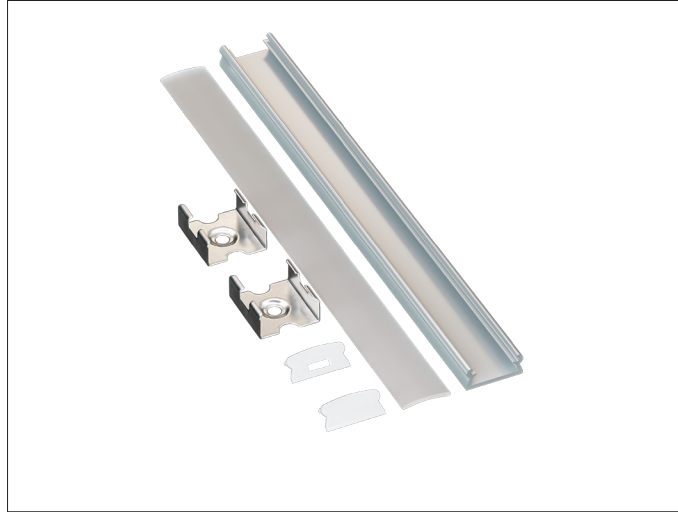


Anodized Aluminum

Compatible Tape Light

- Static White (10mm) <4.6W/ft
- Tunable CCT (10mm) <4.6W/ft
- RGBW (12mm) <4.6W/ft

PROJECT:
TYPE:
LOCATION:
CATALOG NUMBER:



ECONOMY BUNDLE ORDERING INFORMATION

ITEM NUMBER	DESCRIPTION
EE1-AAFR-2M-BNDL1	2M Economy Single Unit Bundle Includes: (1) 2M Economy Extrusion, (1) 2M High Grade Diffusion Lens, (1) End Cap w/ Hole, (1) End Cap w/o Hole, (6) Mounting Clips
EE1-AAFR-2M-BNDL5	2M Economy Five Unit Bundle Includes: (5) 2M Economy Extrusions, (5) 2M High Grade Diffusion Lenses, (5) End Caps w/ Hole, (5) End Caps w/o Hole, (30) Mounting Clips

ECONOMY DIMENSIONS

