

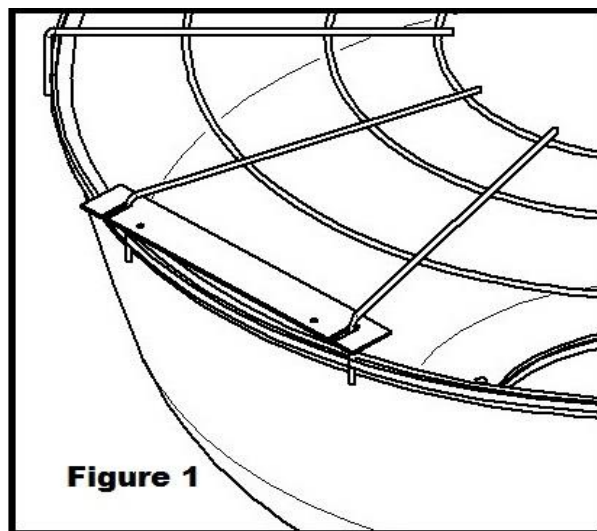


DHB SENSOR BOX INSTALLATION INSTRUCTIONS

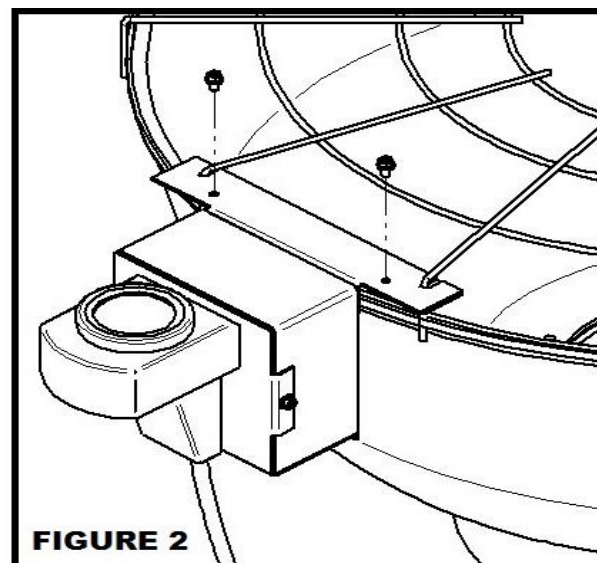
Follow all instructions carefully. Failure to do so will result in damage to fixture and void your warranty.

Tools required: ¼" hex socket, drill.

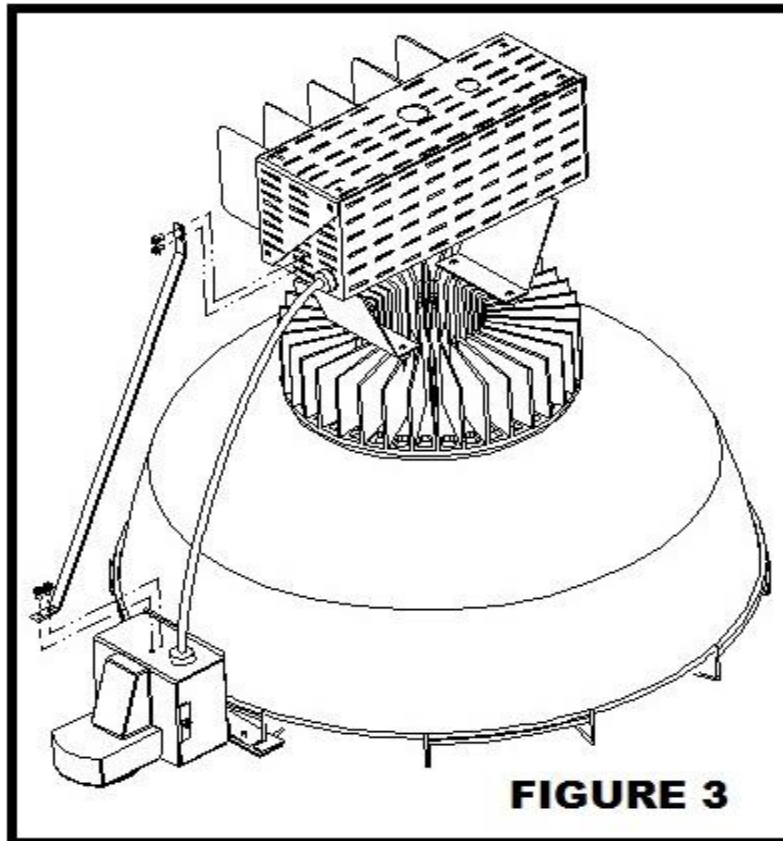
- Slot the sensor box bracket along the vertical section of the cage as shown in Figure 1. Make sure that the sensor box bracket is directly below and in-line with cable side of the driver box.



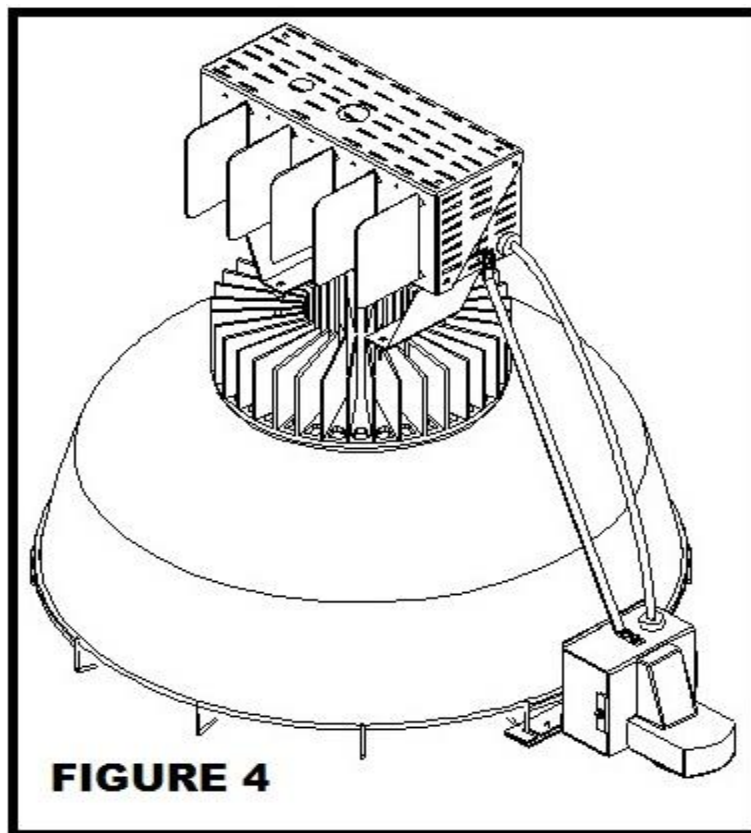
- Attach the sensor box assembly over the sensor box bracket using two of the screws provided as shown in Figure 2.



- Attach the sensor arm to the driver box using two of the screws provided as shown in Figure 3
- Attach the sensor arm to the sensor box using the other two screws as shown in Figure 3.

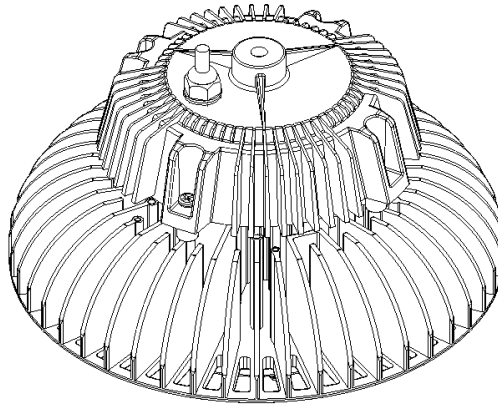


- Make sure that the sensor box is fully secured to the wire cage and driver box. The finished product should closely resemble Figure 4.

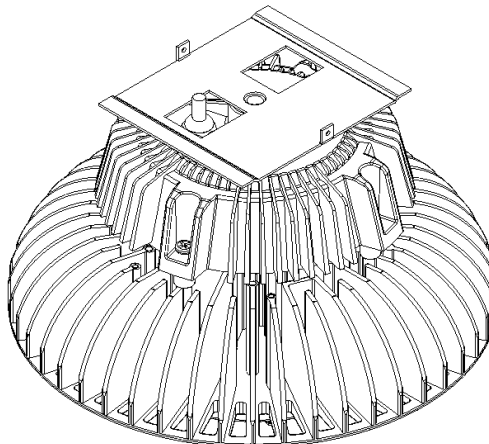


DHB 2.0 FMB Field Installation Instructions

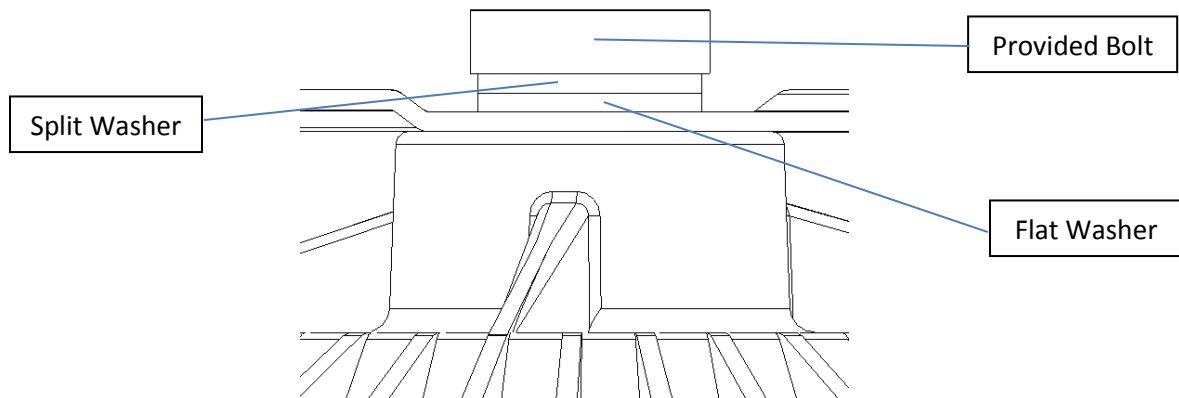
- 1) Remove the hook from the fixture as shown in the figure below. Please keep the hook and nut as they will be reattached later.



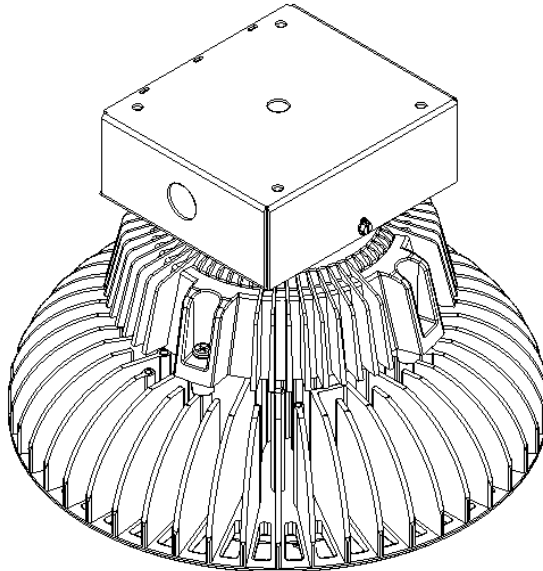
- 2) Place the slide piece over the fixture as shown in the figure below.



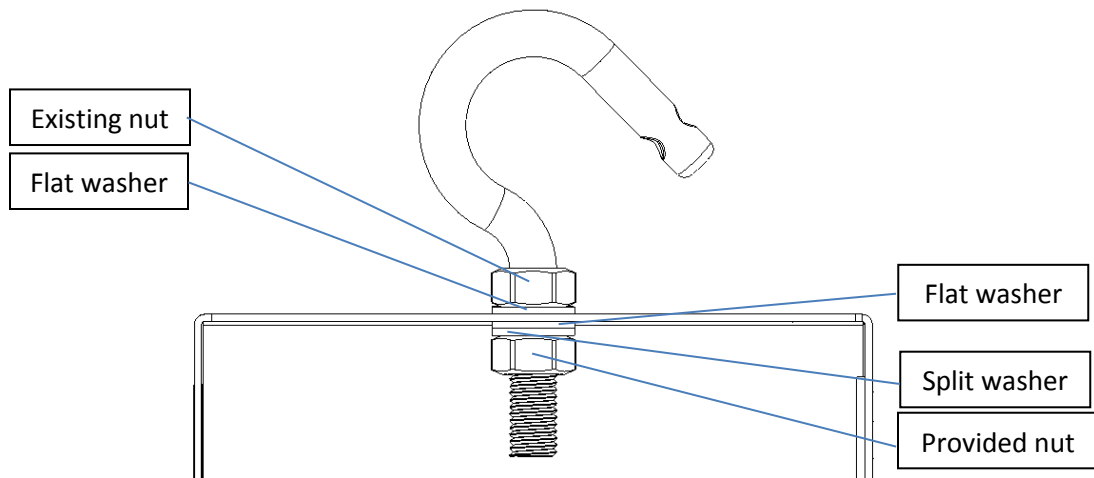
- 3) Screw the slide piece into the fixture using the bolt and washers provided. The figure below shows the correct orientation.



- 4) If the cords are 6ft long, please cut them down to about 6in long so that the electrical connections can be made inside the FMB.
- 5) Attach the box to the slide as shown in the figure below using 1 of the screws provided.



- 6) Remove the knockout from the side of the box and install the cord using the cord lock and nut provided.
- 7) Make the necessary electrical connections inside the box.
- 8) Reinstall the hook into the top of the FMB using the hex nuts and washers provided as shown in the figure below.



- 9) Install the door using the final screw provided as shown below, making sure the door's three tabs are properly seated inside the top of the FMB.

