



# D14CC150HVT-F

## 1400mA LED Driver w/ Tuning

- High Range Input Voltage 347 – 480 Vac
- 0-10V Dimming to 10%
- Thermal Foldback Control



### Performance

Input Voltage	347 ~ 480 Vac ± 10%
Input Current Max	0.48 /347V 0.34/480V
Input Power Max	165W
Input Frequency	50 - 60 (Hz)
Power Factor	> 0.95
THD max	< 20 %
Output Voltage	38V-107V
Output Current	140-1400mA
Output Power	150W Max
Line Regulation	±1 %
Load Regulation	±3 %
Output Current Ripple	<10%
Inrush Current	347V: 59.2A / 97uS
Peak / >50% Duration	480V: 74A / 79uS

- \* Refer to charts for additional information
- Harmonic Emissions comply with ANSI C82.77
- Inrush current complies with NEMA 410

### Environmental

EMI and RFI	Meets FCC part 15 (Class A) Non-Consumer Limits
Minimum Operating Temperature	-40°C (-40°F)
Storage Temperature	-40°C to 85°C
tc	85°C (185°F) max
Location Rating	UL Dry & Damp, Type HL
Transient Protection	IEEE C62.41 6kV**

\*\*Driver uses MOVs for transient protection. Refer to application note EVD07 at [www.unvlt.com](http://www.unvlt.com) for additional information on Hi-Pot Testing.



### Physical

Length	9.50 in (241.3 mm)
Width	2.40 in (61.0 mm)
Height	1.55 in (39.4 mm)
Mounting Length	8.89 in (225.8 mm)
Weight (lbs)	2.6
Lead Lengths	
Blk, Wht, Blk/Wht, Blu/Wht	11.5 +/- 1.0 in
Red(+), Blue(-), Gry, Vio	11.5 +/- 1.0 in

Lead-wires are 18 AWG 105°C /600V solid copper.

### Protection

Over voltage, Overload and short circuit, over temp.

### Safety:

UL 8750 & CSA 250.13  
UL Class P

### Ordering Information

Order Number	Description	Qty/Carton
D14CC150HVT-F20KC	Standard Product	10
D14CC150HVT-FR00C	Rated IP66	10

\*Consult Factory for Tuning ordering information

### Wiring Diagram:



- **NOTE:** Unused Black/White and Blue/White leads must be individually capped off when thermal foldback control is not used.



Application and operation performance specification information subject to change without notification.



## Programmable Tuned Output Settings

- This Everline LED Driver can be configured to set its current output to a selected fraction of their maximum rated design level. This function is called tuning (or also high-end trim) and it can be implemented with the LDTC01A using the Selector rotary switches. Tuning assignments are stored in driver memory and are not lost when power is removed. All factory produced drivers are tuned to maximum output unless otherwise noted on the label.
- Tuning SET Levels are listed in the table to the right. The SET Level corresponds to an associated Output Current value.
- Tuned output tolerance of  $\pm 5\%$ .
- Refer to application note EVD06 at [www.unvlt.com](http://www.unvlt.com) for additional information.

Set Value	Output Current (A)
100	1.400
99	1.378
98	1.355
97	1.334
96	1.312
95	1.291
94	1.270
93	1.249
92	1.229
91	1.209
90	1.189
89	1.170
88	1.151
87	1.132
86	1.113
85	1.095
84	1.076
83	1.058
82	1.041
81	1.023

Set Value	Output Current (A)
80	1.006
79	0.989
78	0.972
77	0.955
76	0.939
75	0.923
74	0.907
73	0.891
72	0.875
71	0.860
70	0.844
69	0.829
68	0.814
67	0.799
66	0.785
65	0.770
64	0.756
63	0.741
62	0.727
61	0.713

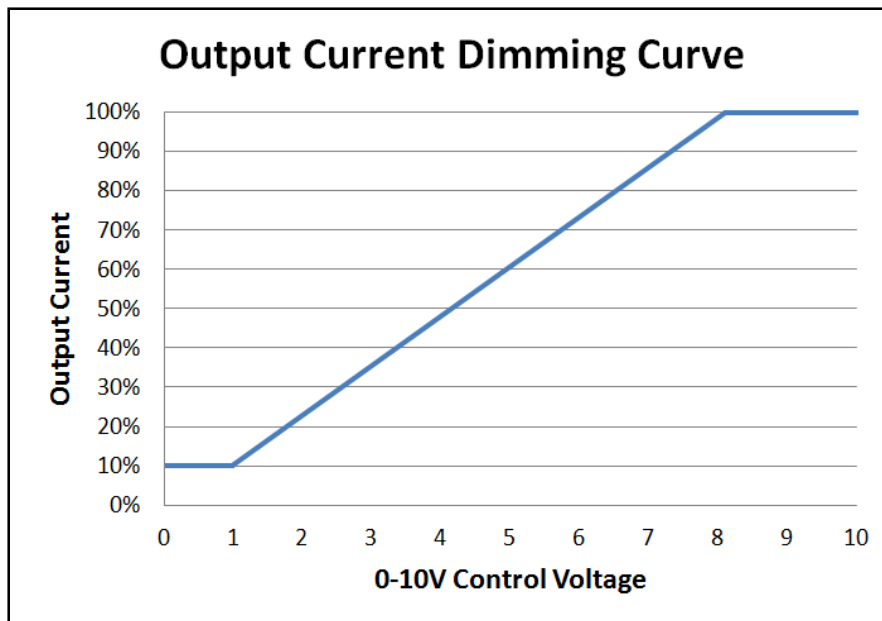
Set Value	Output Current (A)
60	0.699
59	0.685
58	0.672
57	0.658
56	0.645
55	0.631
54	0.618
53	0.605
52	0.592
51	0.578
50	0.565
49	0.552
48	0.539
47	0.527
46	0.514
45	0.501
44	0.488
43	0.475
42	0.463
41	0.450
40	0.437



Application and operation performance specification information subject to change without notification.



## 0-10V Dimming



### 0-10V Analog Dimming Interface

- Analog 0 to 10 vDC Voltage Control
- Use Violet (+) & Gray (-) for connection to 0-10vDC.
- 10v = maximum output, 0v = minimum output
- Wiring Violet & Gray together provides min. light output.
- Capping Violet & Gray separately provides 100% light output.
- 0-10V interface can be wired as Class 1 or Class 2 Circuit.
- Driver will source a maximum of 200uA for control needs.
- Controller must sink current from the 0-10V control leads.

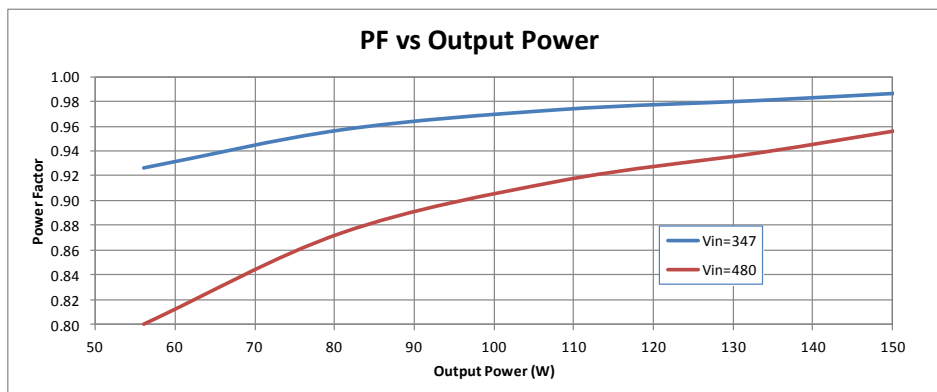
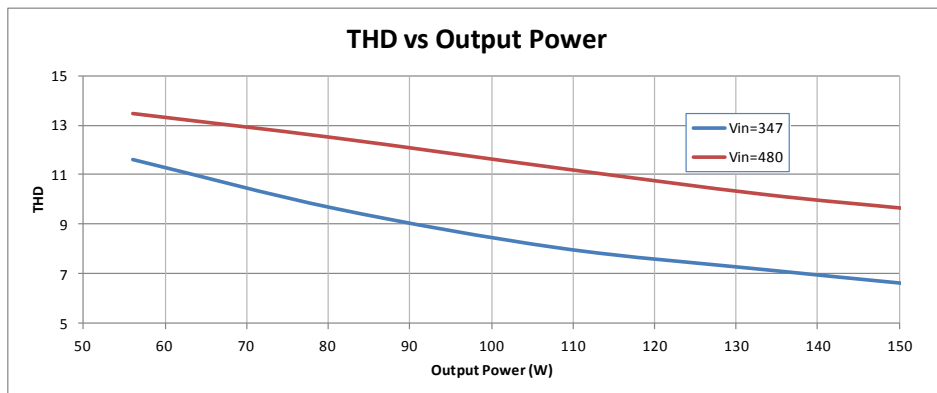
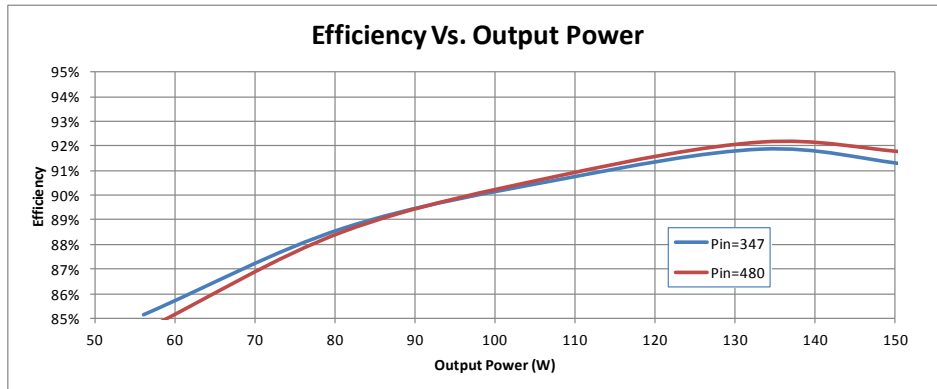


Application and operation performance specification information subject to change without notification.



## Performance: Efficiency, THD, & Power Factor

Typical performance measurements are shown. The charts are to be used as a guideline and not for specification use.



Output power based on maximum rated output current and varying load voltages.



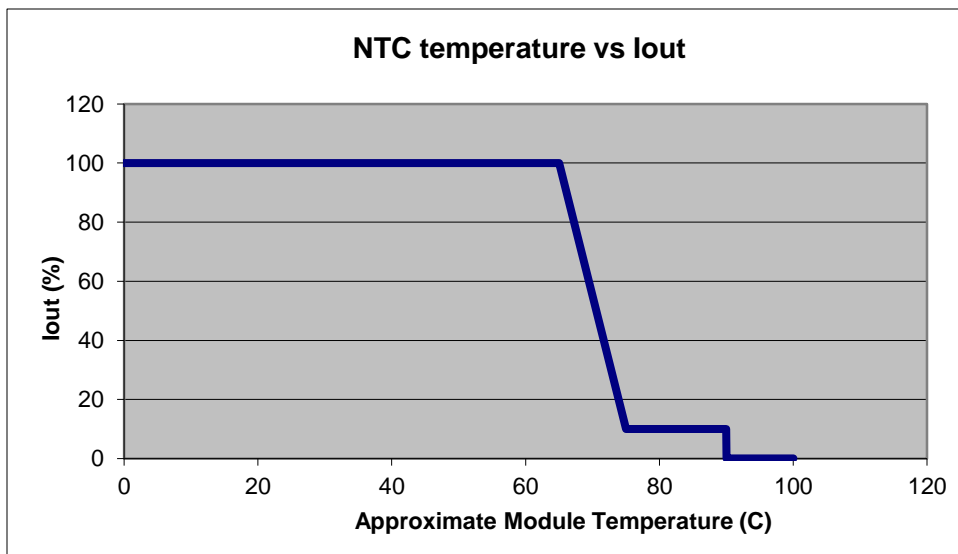
Application and operation performance specification information subject to change without notification.



## Module Thermal Foldback Protection

### Thermal Foldback Control

- Luminaire temperature monitoring/protection
- LED Driver reduces output current for external thermal protection if an NTC (Negative Thermal Coefficient) is connected to the Black/White and Blue/White leads.
- **NOTE:** Unused Black/White and Blue/White leads must be individually capped off when thermal foldback control is not used.
- See application note on [www.unvlt.com](http://www.unvlt.com) for more information.



(Example with the Murata NTC p/n NCP18XV103J03RB)

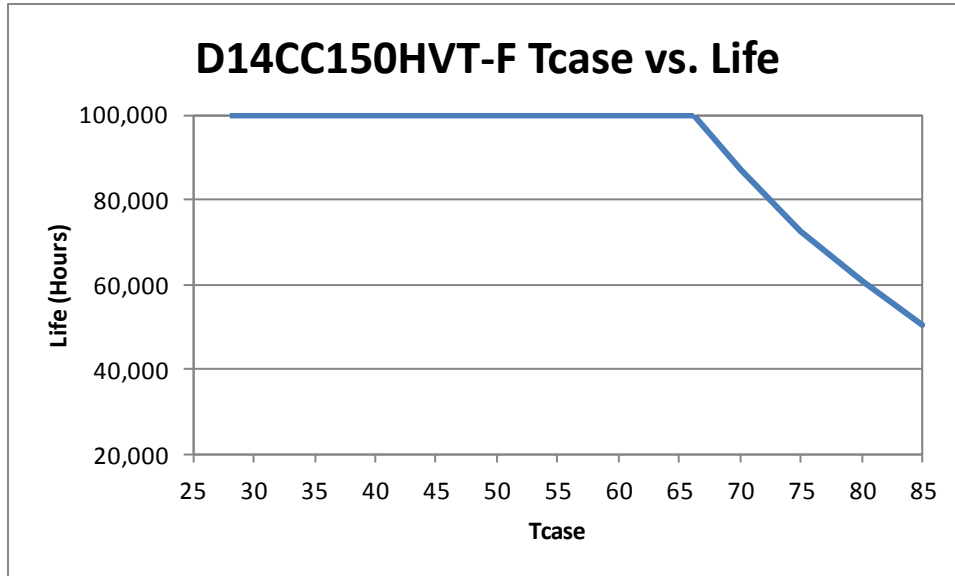


Application and operation performance specification information subject to change without notification.



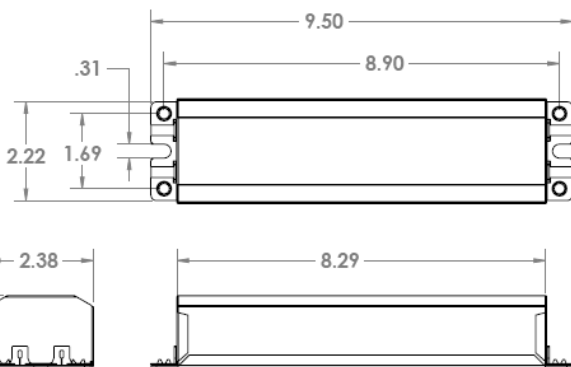
# D14CC150HVT-F

## Life vs. Driver Tcase

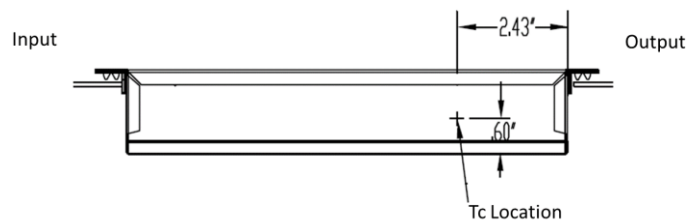


The Data curve provided predicts the LED Driver life based on the case temperature measured at the Tc location identified on the label or specification sheet. The Telecordia SR-332 standard is used to generate the prediction curves.

## Dimensional Diagram



## Tc Location



## Warranty:

Universal Lighting Technologies warrants to the purchaser that each power supply will be free from defects in material or workmanship for a period of 5 years from the date of manufacture when properly installed per instructions and under normal operating conditions of use. Call 1-800-225-5278 for technical assistance.



Application and operation performance specification information subject to change without notification.