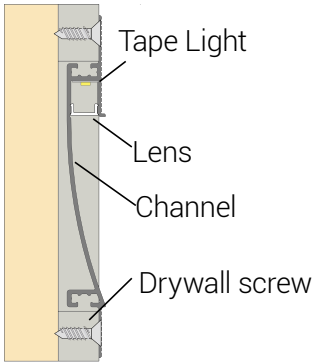


ALLOY LED[®] Installation Instructions

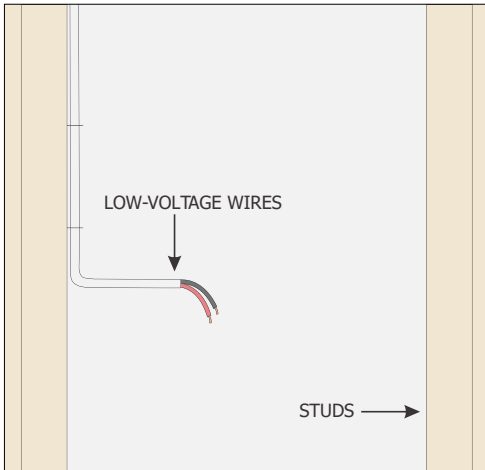
Mudr[®] Alcove 4in. - Channel



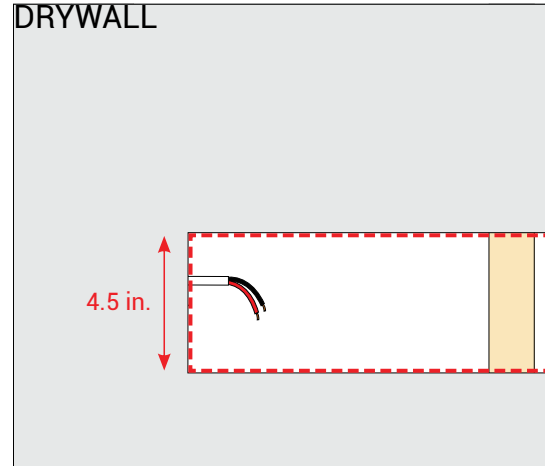
1. Position the 24V DC Class 2 power supply in a suitable location within 30 feet of the desired fixture location.

NOTE: Longer distances are acceptable when using a thicker 12 AWG wire.

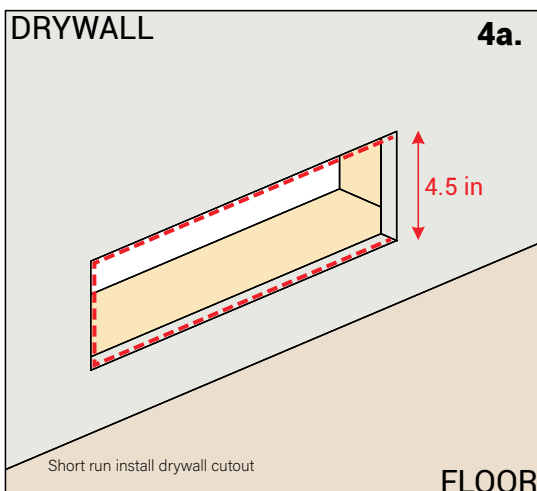
2. Before installing the tape light in the channel, test the connection to power. If using a full spool of tape, connect one end of the tape to DC power and turn power on. If using a cut section of tape, attach the connector to the tape and then connect to DC power.



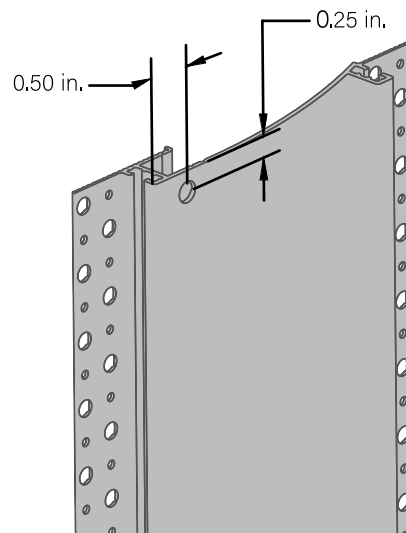
3. Bring 24V low-voltage in-wall rated wires to the desired fixture location.



4. Cut a 4.5in. opening in the drywall where you would like to mount Mudr Alcove 3in. Channel.



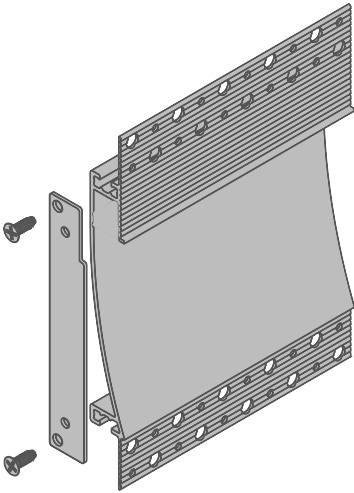
NOTE: Perifina Wall Accent 4 in. can only be used with 5/8" drywall.



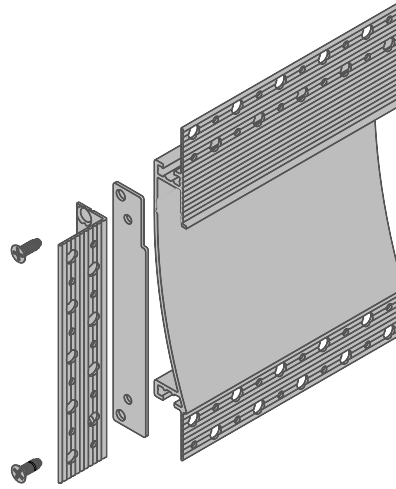
5. Drill a 1/4 inch hole in the back of the fixture. This hole will be used for power feed. Deburr sharp edges.

ALLOY LED[®] Installation Instructions

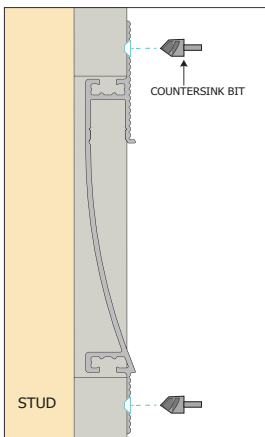
Mudr Alcove 4in. - Channel



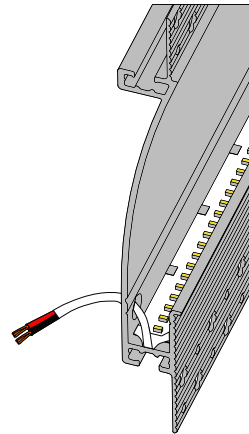
6. Fasten the Mudr Alcove 3in. Channel end caps with the provided flat head screws on both ends.



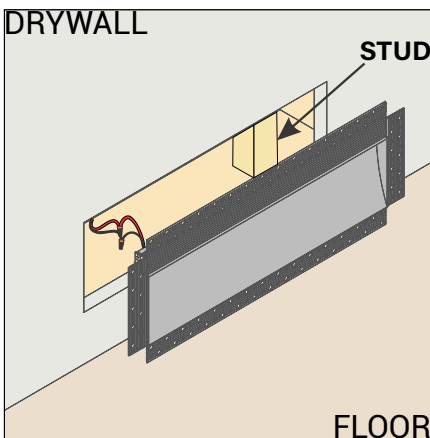
7. Carefully countersink holes in Mudr Alcove 3in. Channel using the countersink drill bit.



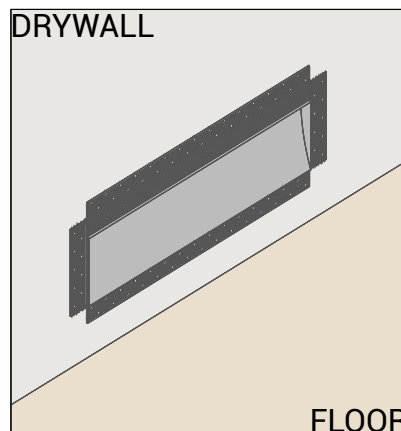
8. Carefully countersink holes in Mudr Alcove 3in. Channel using the countersink drill bit.



9. Remove the adhesive protector in the back of the LED tape light. Apply the tape light where indicated above. Pass the lead wire through the 1/4 in. hole.

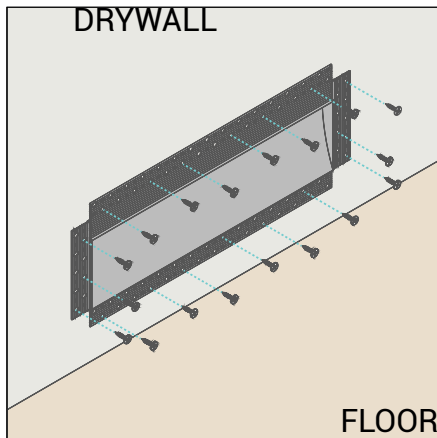


10. Connect tape light lead to low-voltage in-wall rated wire. Red is positive (+) and black is negative (-). sharp edges.

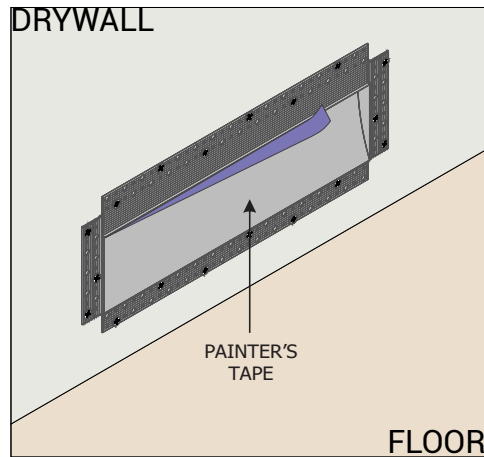


11. Pass the connected low-voltage wires through the opening in the drywall cutout.

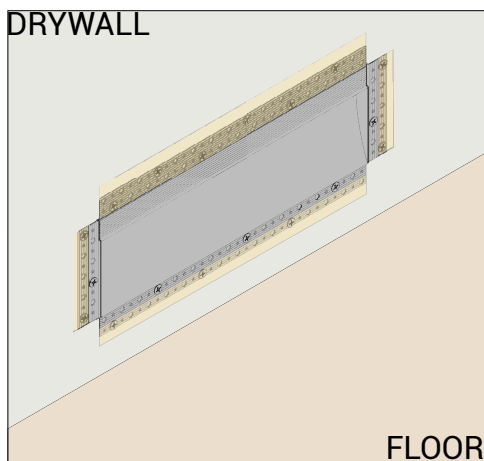
Mudr Alcove 4in - Channel



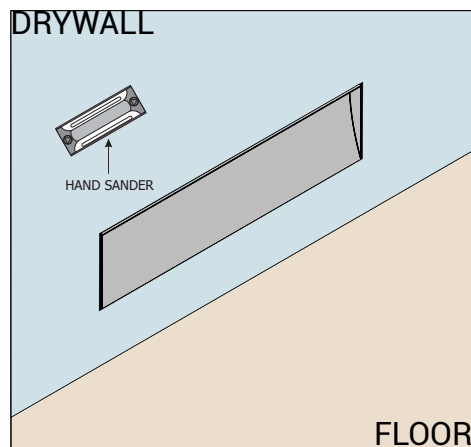
12. Secure the fixture to the drywall using the drywall screws. The suggested screw spacing is 4 inches. Use drywall screws into studs where possible.



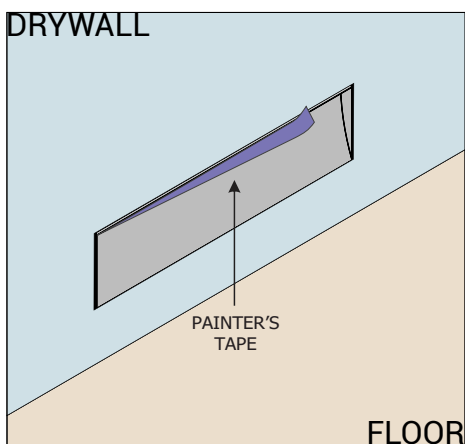
13. Cover the inside of the fixture with painter's tape if necessary before plastering, to prevent joint compound and dust from entering.



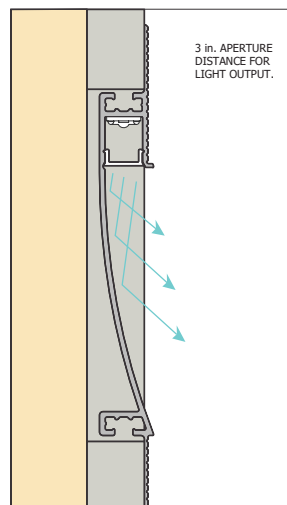
14. Apply drywall tape along the edges of the fixture to prevent cracking of joint compound after installation.



15. Apply drywall joint compound over the fixture's flanges. Then finish the wall.

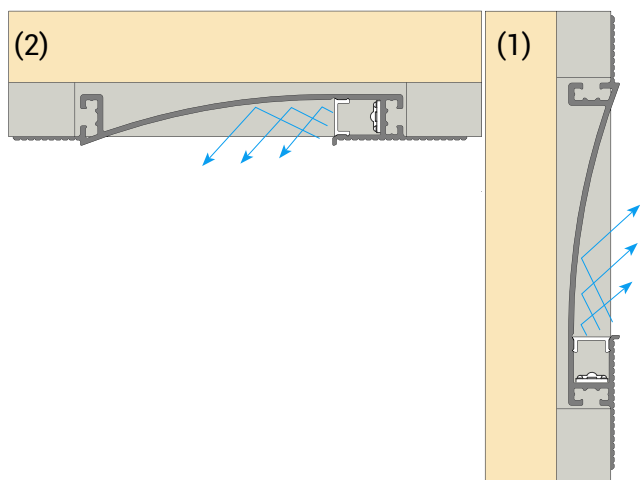


16. Remove the painter's tape and clean if necessary.



17. Affix the lens by gently snapping into place. Ensure it is fully seated.

ALLOY LED Installation Instructions



Possible configurations

Uplight (1) and Ceiling Mounting Wall wash (2)