

# TRACE BUNDLE

## Aluminum Tape Light Extrusion Bundle

Deeper regression produces zero dotting when used with most tape lights. This lightweight extrusion surface mounts with a full cover lens and end caps for a finished look.

- Made of lightweight double anodized aluminum
- Frosted, UV & flame resistant lens protects light source while evenly diffusing light
- Field cuttable lens and extrusion
- Pre-Drilled, countersunk holes
- Aluminum provides excellent heat dissipation
- End caps included for a tailored look
- Compatible with most Trulux tape light

### Available Finishes

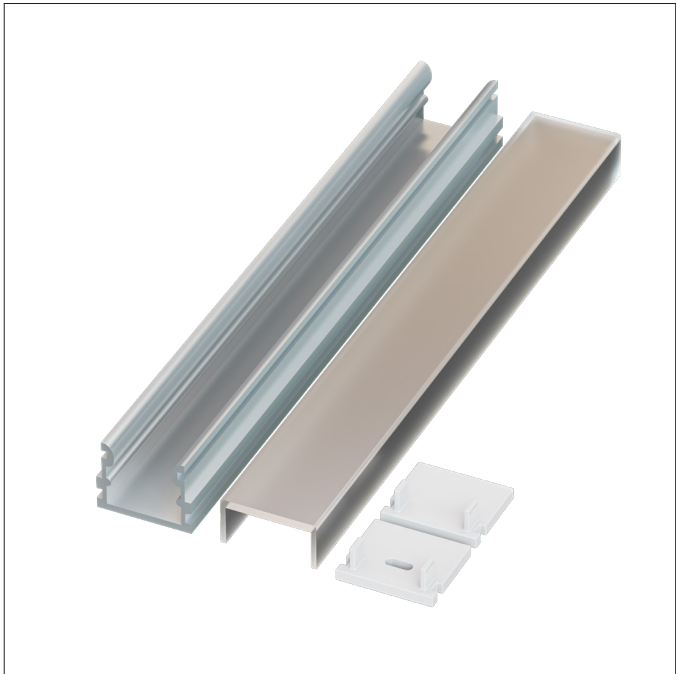


Anodized Aluminum

### Compatible Tape Light

- Single Color (10mm) + HD Connectors
- Tunable CCT (10mm) + HD Connectors
- RGBW / RGBTW (12mm) + HD Connectors

PROJECT:
TYPE:
LOCATION:
CATALOG NUMBER:



### TRACE BUNDLE ORDERING INFORMATION

ITEM NUMBER	DESCRIPTION
PE-TRACE-2M-BNDL1	2M Trace Single Bundle Includes: (1) 2M Trace Extrusion in Aluminum Finish, (1) 2M High Grade Diffusion Lens, (1) End Cap w/ Hole, (1) End Cap w/o Hole, (6) Mounting Clips

### TRACE DIMENSIONS

