

PROJECT INFORMATION			
JOB NAME		TYPE	
ORDERING CODE			

NU4

Round Downlight RGBW



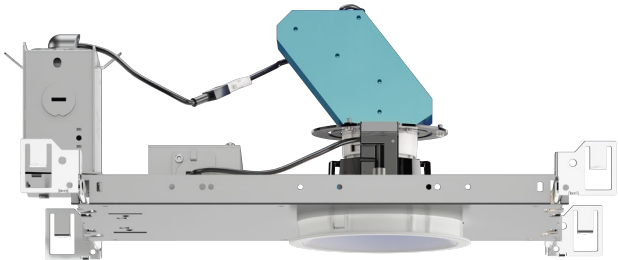
AT  
airtight

DF  
dead-front

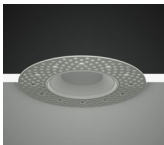
PR  
plenum rated

wet rated

25° - 50° BEAM		
(Note: Specifications are subject to change without notice)		
22mm COLOR TUNING MODULE PERFORMANCE DATA		
LED LIGHT ENGINE	NOMINAL DELIVERED LUMENS	SYSTEM WATTAGE
10LM	1000LM @30K/90CRI	25W
Notes	Delivered lumens based on 25D optic with no lens, (see page 2)	



Trim



Trimless



Trimless Millwork

FEATURES

- RGB (W) five white CCT options available.
- On-board, closed-loop optical feedback measures the lumen depreciation of each channel and re-balances the color model to ensure color consistency over the life of LED array.
- 20° - 50° optical beam control
- UGR <5
- Multiple mounting, trims and finishes available

LED

- Lumiled LUXEON C Color Line
- SDCM = 2-step MacAdam Ellipse, Duv +/- 0.002, Lumen Maintenance: L<sub>70</sub> > 50,000 hrs

DIMMING AND CONTROLS

- DMX512-A-RDM control, 8 bit channel control with 256 grey bit scale
- BLE mesh network control, profile allows color mixing on Casambi app

LISTING

- ULus Listed to UL1598 & UL2108; cUL Listed to CSA C22.2 #250.0
- IP65 with lens - Suitable for wet locations with lens - Suitable for damp locations without lens
- Non-conductive, dead-front construction (shower approved)
- Made in the USA - meets the requirements of the Buy American provision within the ARRA
- NSF/ANSI-2 with lens
- 5 Year Limited warranty

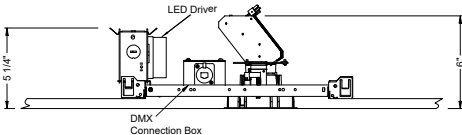
CONSTRUCTION

- Shatter proof acrylic bezel lens
- LEXAN™ (PC) Optimal connectivity for wireless control signal. Impact and chemical resistant at the highest level. With stands temperatures up to 240° F.
- Electrocoated 16-gauge cold-rolled steel construction
- Accommodates ceiling thickness from 1/8" to 1-3/4"

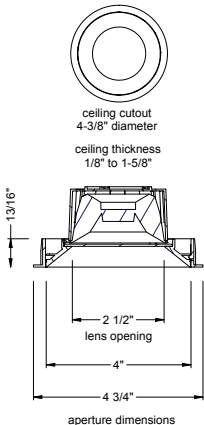
ELECTRICAL

- 120-277VAC 50/60Hz input
- Power factor > 0.9
- Max ambient temperature 50°C
- Battery Backup not offered. Emergency Generator/Inverter/Controls-Override Device supplied by others.

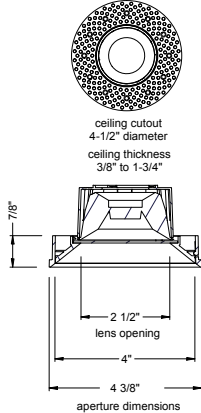
FIXTURE HEIGHT



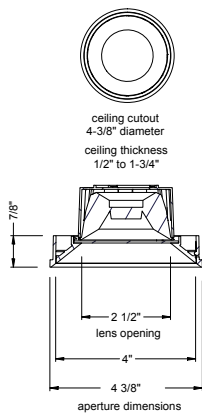
TRIMMED



TRIMLESS



MILLWORK



# alphabet

25°- 50° BEAM ORDERING CODE		
SERIES	NU4	NU4
TYPE	RD	round downlight
	RDT	round downlight trimless
	RDTMW	round downlight trimless millwork
LED	RGBW	4 channel color module
DELIVERED LUMENS	10LM	1017 lm
	Calculated Delivered Lumens = [Delivered Lumen Value] x [CCT Multiplier] x [Optic Multiplier]	
WHITE CCT	27K	RGBW with white at 2700K
	30K	RGBW with white at 3000K
	35K	RGBW with white at 3500K
	43K	RGBW with white at 4300K
	65K	RGBW with white at 6500K
CRI	90	90 CRI
OPTIC & LM MULTIPLIER SEE PAGE 3	25D	25 degrees (1.00)
	30D	30 degrees (0.98)
	35D	35 degrees (0.98)
	50D	50 degrees (0.92)
BEZEL LENS SEE PAGE 3	NL <sup>1</sup>	no lens (1.00)
	CL	clear lens (1.00)
TRIM COLOR SEE PAGE 3	BK	black
	WH	white
	MC	matte chrome
	BZ	bronze
	WT	wheat
Not applicable to trimless option. Do not include in trimless ordering code.		
BEZEL COLOR SEE PAGE 3	BK	black
	WH	white
	MC	matte chrome
	BZ	bronze
	WT	wheat

PROJECT INFORMATION			
JOB NAME		TYPE	
ORDERING CODE			

25°- 50° BEAM ORDERING CODE		
MOUNTING OPTIONS SEE PAGE 5, 6	NC	new construction with ceiling fitting plate
	IC	insulation contact housing
	ICAT	insulation contact/airtight housing
	CP	chicago plenum housing
	RET	retrofit, no ceiling fitting plate
VOLTAGE	UNV	120V-277V
DIMMING	DMX-RJ45	DMX control dimming to 0.1% with RJ45 connection box
	DMX-XLR	DMX control dimming to 0.1% with XLR 5pin connection box
	DMX-WL	DMX control dimming to 0.1% with wire lead connection box
	CAS	Casambi Bluetooth control with flicker free 0.1% dimming

ADDITIONAL MOUNTING INFO	
New Construction Bar Hangers (included)	Mounting Length: 14-3/4" to 26"
Extension Kit p/n: K20266 (ordered separately, 1 per fixture)	<i>Extends a pair of Bar Hangers</i> Total Mounting Length: 29" to 48"

YOUR COMPLETED ORDERING CODE
Follow the steps to specify your fixture, example:
NU4-RD-RGBW-10LM-30K-90-25D-CL-BK-BK-NC-UNV-DMX-RJ45

- NOTES
- NL option does not meet requirement for dead-front, airtight, wet and NSF. It is damp location rated.

# alphabet

PROJECT INFORMATION			
JOB NAME		TYPE	
ORDERING CODE			

## TRIM OPTIONS

### TRIM/BEZEL COLORS



WH



MC



BK



BZ



WT

## OPTICAL OPTIONS

### CL

Clear Lens



OPTIC	BEAM ANGLE	UGR
25D	27.4	≤5
30D	29.7	≤5
35D	34.2	6.5
50D	49.3	12.2

### NL

No Lens



OPTIC	BEAM ANGLE	UGR
25D	27.4	≤5
30D	29.7	≤5
35D	34.2	6.5
50D	49.3	12.2

## PHOTOMETRIC DATA

### NU4-RD-RGBW-10LM-30K-90-XXD-NL-WH-WH

25D 27° NO LENS, SA BEZEL	
Throw Distance (ft)	Beam Diameter (ft)
6	105
8	59
10	38
12	26
14	19
Illuminance at Center (fc)	
WATTS: 25.7	LPW: 39.7
LUMENS: 1020	CCT: 3000K
INTENSITY	
DEGREE	CANDELA
0	3796
5	3467
15	1631
25	407
35	82
45	16

30D 30° NO LENS, WHITE BEZEL	
Throw Distance (ft)	Beam Diameter (ft)
6	92
8	52
10	33
12	23
14	17
Illuminance at Center (fc)	
WATTS: 25.7	LPW: 39
LUMENS: 1001	CCT: 3000K
INTENSITY	
DEGREE	CANDELA
0	3321
5	3079
15	1639
25	435
35	71
45	16

35D 34° NO LENS, WHITE BEZEL	
Throw Distance (ft)	Beam Diameter (ft)
6	72
8	41
10	26
12	18
14	13
Illuminance at Center (fc)	
WATTS: 25.7	LPW: 39.1
LUMENS: 1004	CCT: 3000K
INTENSITY	
DEGREE	CANDELA
0	2601
5	2445
15	1519
25	585
35	99
45	17

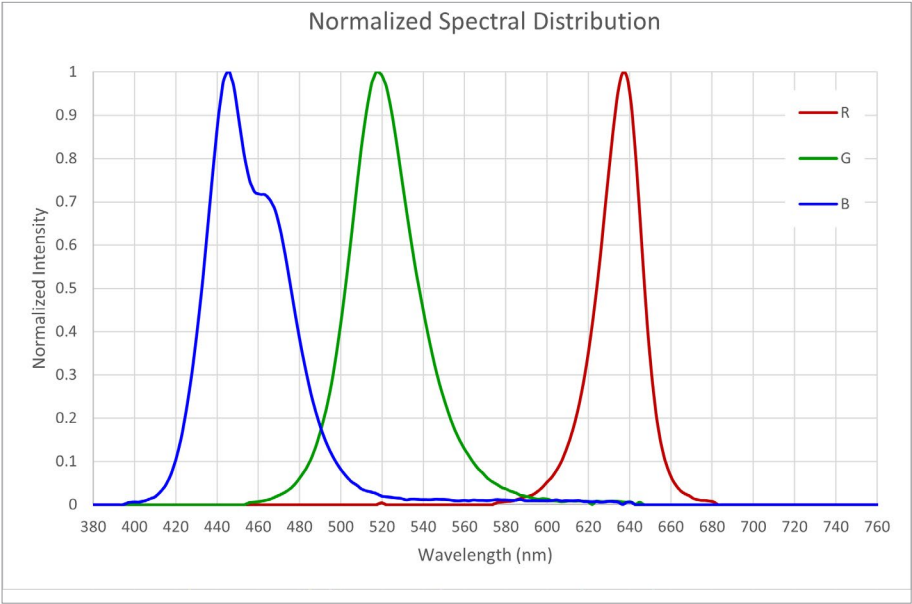
50D 49° NO LENS, WHITE BEZEL	
Throw Distance (ft)	Beam Diameter (ft)
6	37
8	21
10	13
12	9
14	7
Illuminance at Center (fc)	
WATTS: 25.7	LPW: 36.6
LUMENS: 940	CCT: 3000K
INTENSITY	
DEGREE	CANDELA
0	1322
5	1299
15	1080
25	643
35	243
45	56

PROJECT INFORMATION			
JOB NAME		TYPE	
ORDERING CODE			

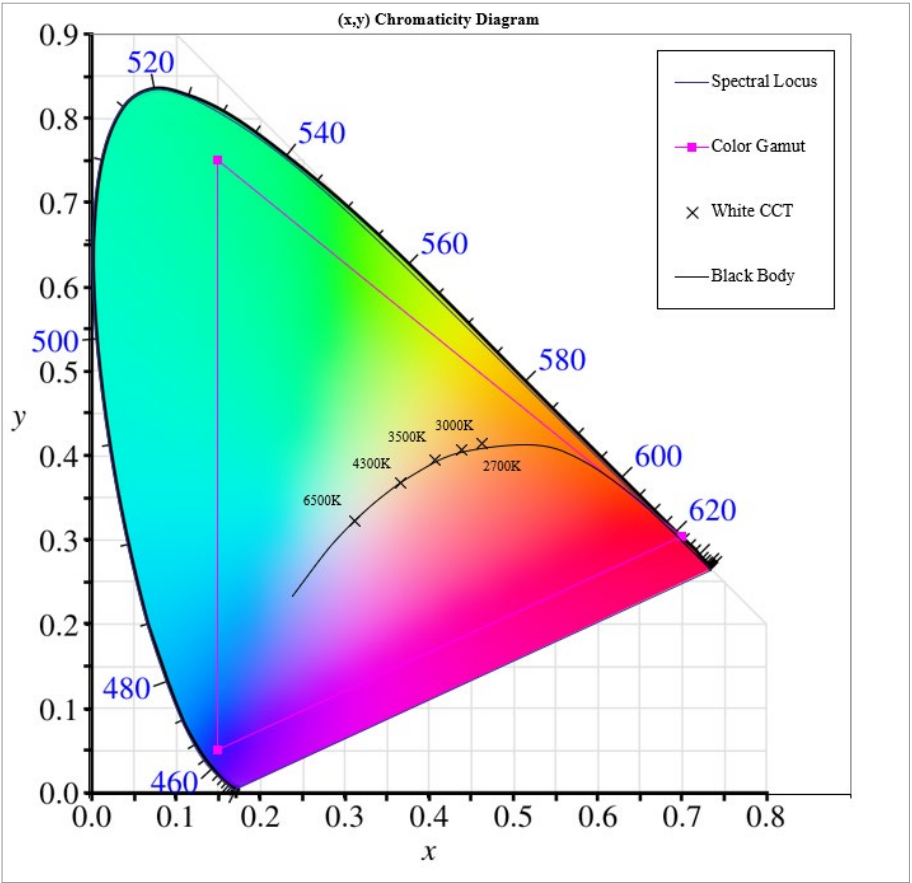
RGBW DATA

DOMINANT WAVELENGTH	
	MEASURED
R	623.9
G	524.2
B	461.9

RGB SPECTRAL PLOT



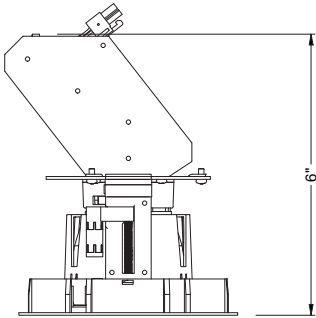
COLOR GAMUT PLOT



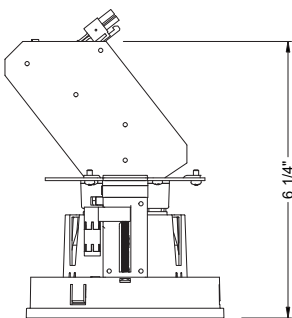
PROJECT INFORMATION			
JOB NAME		TYPE	
ORDERING CODE			

## MOUNTING OPTIONS

### FIXTURE HEIGHT



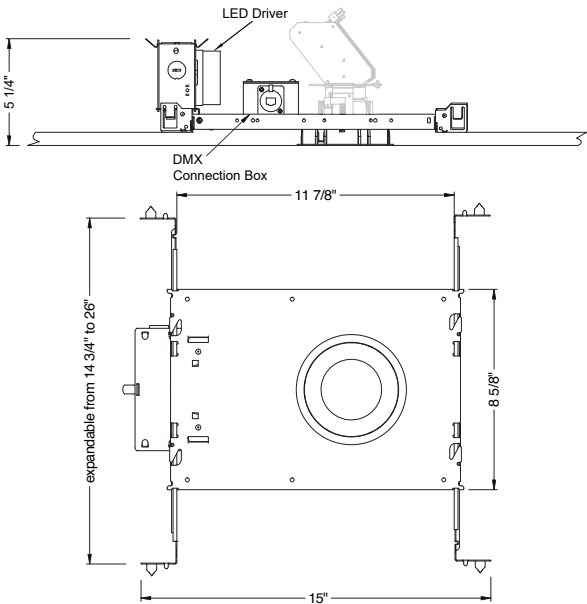
TRIMMED



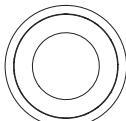
TRIMLESS & MILLWORK

### NC - NEW CONSTRUCTION

#### TRIM

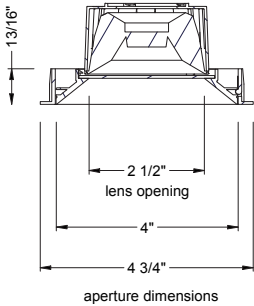


#### TRIM



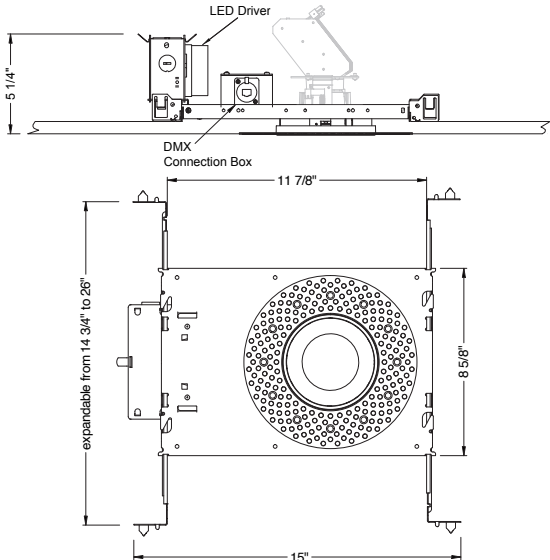
ceiling cutout  
4-3/8" diameter

ceiling thickness  
1/8" to 1-5/8"

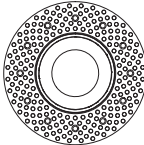


aperture dimensions

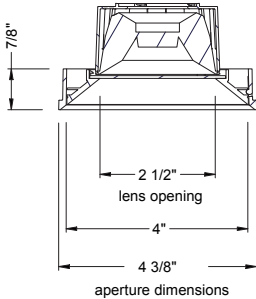
#### TRIMLESS



#### TRIMLESS

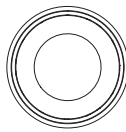


ceiling cutout  
4-1/2" diameter  
ceiling thickness  
3/8" to 1-3/4"

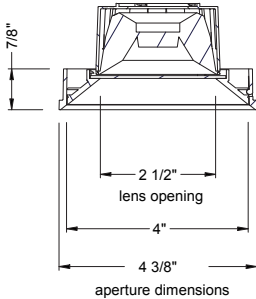


aperture dimensions

#### TRIMLESS/MILLWORK



ceiling cutout  
4-3/8" diameter  
ceiling thickness  
1/2" to 1-3/4"

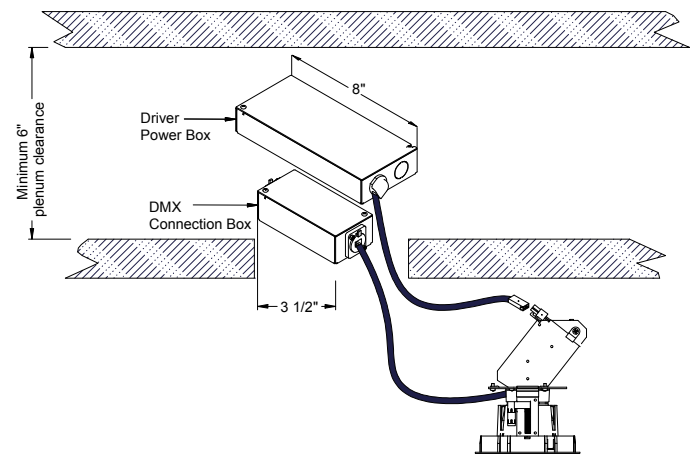


aperture dimensions

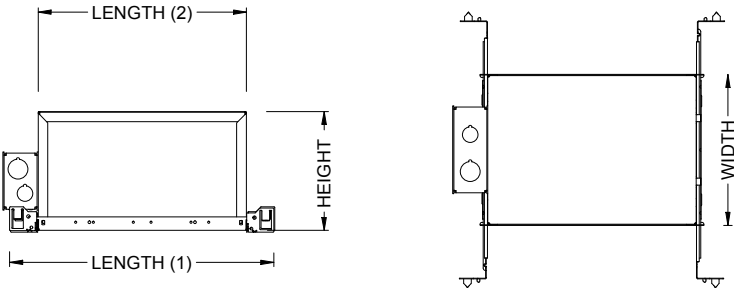
PROJECT INFORMATION			
JOB NAME		TYPE	
ORDERING CODE			

MOUNTING OPTIONS (CONTINUED)

RET - RETRO  
TRIM/TRIMLESS



IC - INSULATION CONTACT HOUSING  
ICAT - INSULATION CONTACT / AIR TIGHT  
CP - CHICAGO PLENUM



BOX SIZE	L 1	L 2	W	H
A	15 - 7/16"	11 - 3/4"	8 - 1/2"	6 - 3/4"

RATINGS / CERTIFICATIONS	NC	RET	IC	ICAT	CP
TYPE NON-IC	✓	✓			
TYPE IC			✓	✓	✓
CHICAGO PLENUM (CCEA)					✓
SUITABLE FOR AIR HANDLING PLENUMS	✓	✓	✓	✓	✓
REDUCED AIRFLOW (WITH LENS) ASTM E283	✓	✓	✓	✓	✓

CEILING THICKNESS	
FIXTURE TYPE	MOUNTING TYPE
	NC, IC, ICAT, CP, RET
	STANDARD CEILING THICKNESS
TRIM	1/8" to 1-5/8"
TRIMLESS	3/8" to 1-3/4"
MILLWORK (TRIMLESS)	1/2" to 1-3/4"

BOX TYPE / LUMEN OUTPUT - STANDARD BEAMS (35° - 50°)			
LUMEN OUTPUT	BOX - A		
	CP	IC	ICAT
10LM	✓	✓	✓