



FlexFit (Hybrid UL Type A + B) PLC/T

16PL-C/T/COR/42HV-5CCT/FF18/4P/10/1

CorePro, LED, PL-C, 16 W, 2700 K, 3000 K, 3500 K, 4000 K, 5000 K, 1750 lm, 1750 lm, 1750 lm, 1850 lm, 1850 lm, 50000 hour(s)

Philips FlexFit (Hybrid UL Type A + B) lamps are designed with the customer in mind for installation flexibility. The FlexFit lamp can operate as both a plug and play (UL Type-A) and direct wire (UL Type-B). As with all Philips products, the FlexFit family of lamps are compatible with more ballasts than any manufacturer giving the customer peace of mind during installation. Additionally, the long life (50K hours) delivers reduced maintenance and replacement costs. Available as replacements for 32W and 42w compact fluorescent lamps

Product data

General Information		Luminous Efficacy (rated) (Nom)	
Cap-Base	G24q	Luminous Efficacy (rated) (Nom)	115 lm/W
Nominal lifetime	50,000 hour(s)	Color Consistency	<6
Switching Cycle	50,000	Color rendering index (CRI)	82
Lighting Technology	LED	LLMF At End Of Nominal Lifetime (Nom)	70 %
		All-in Type	All-in, Multi Color Temperature
Light Technical		Operating and Electrical	
Color Code	2700/3000/3500/4000/5000	Input Frequency	50 to 60 Hz
Beam Angle (Nom)	120 degree(s)	Power Consumption	16 W
Luminous Flux	1,750 1,750 1,750 1,850 1,850 lm	Lamp Current (Nom)	166 mA
Color Designation	2700/3000/3500/4000/5000	Wattage Equivalent	42 W
Correlated Color Temperature (Nom)	2700 3000 3500 4000 5000 K		

FlexFit (Hybrid UL Type A + B) PLC/T

Starting Time (Nom)	0.5 s
Warm-up time to 60% light	0.5 s
Power Factor (Fraction)	0.9
Voltage (Nom)	120-277 V
UL Type	UL Type A+B

Temperature

T-Case Maximum (Nom)	185 °F
----------------------	--------

Controls and Dimming

Dimmable	Only with specific dimmers
----------	----------------------------

Mechanical and Housing

Bulb Finish	Frosted
Bulb Material	Plastic
Product Length	6-1/8 inch
Bulb Shape	PL-C
Net Weight (Piece)	0.419 lb

Approval and Application

Energy Saving Product	Yes
-----------------------	-----

Approval Marks	RoHS compliance UL certificate DLC compliance
EU RoHS compliant	Yes
Ambient temperature range	-4 to +113 °F

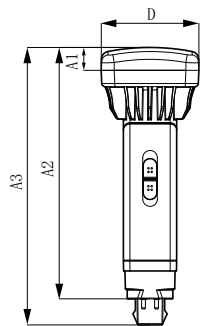
Application Conditions

can it be used in closed luminaires	Yes
-------------------------------------	-----

Product Data

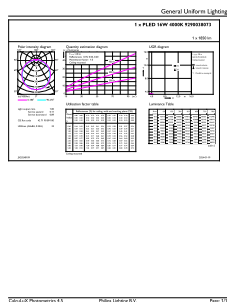
Order product name	16PL-C/T/COR/42HV-5CCT/FF18/4P/10/1
Full product name	16PL-C/T/COR/42HV-5CCT/FF18/4P/10/1
Order code	589788
Material Nr. (12NC)	929003807304
Numerator - Quantity Per Pack	1
EAN/UPC - Product/Case	046677589783
Numerator - Packs per outer box	10
EAN/UPC - Case	50046677589788

Dimensional drawing

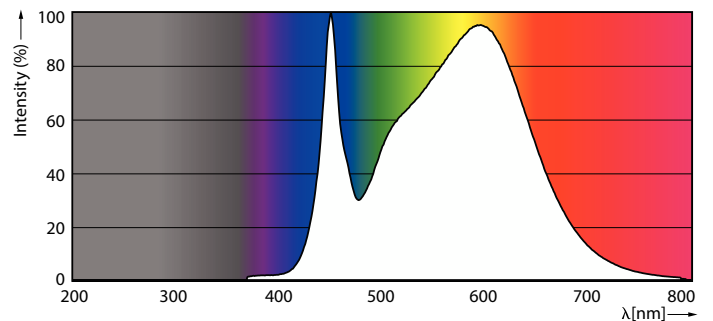


Product	D1	D	A1	A2	A3
16PL-C/T/COR/42HV-5CCT/FF18/4P/10/1	2-3/8 inch	2-3/8 inch	9/16 inch	6-1/8 inch	6-3/4 inch

Photometric data



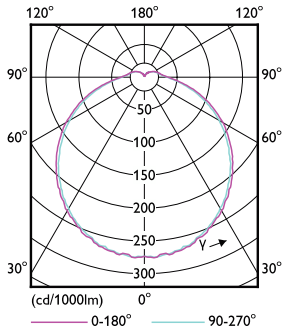
General uniform lighting - 16PL-C/T/COR/42HV-5CCT/FF18/4P/10/1



Spectral Power Distribution Colour - 16PL-C/T/COR/42HV-5CCT/FF18/4P/10/1

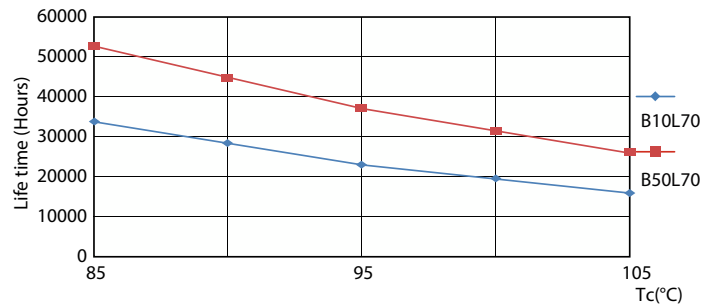
FlexFit (Hybrid UL Type A + B) PLC/T

Photometric data



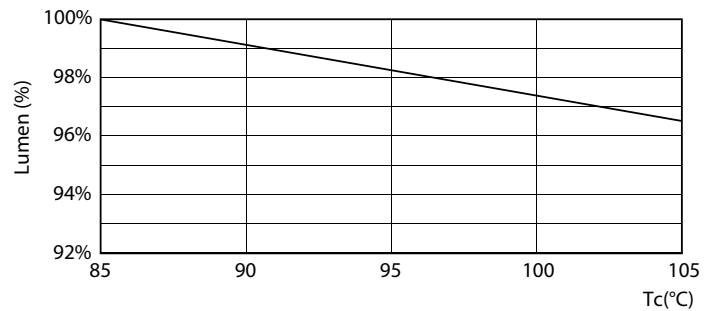
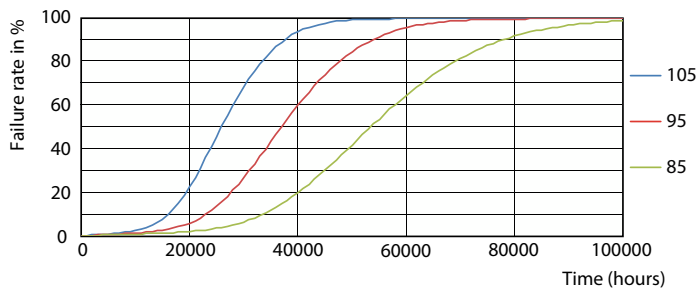
Light Distribution Diagram - 16PL-C/T/COR/42HV-5CCT/FF18/4P/10/1

Lifetime



Life Expectancy Diagram

Life Expectancy Diagram



Life Expectancy Diagram

Lumen Maintenance Diagram - 16PL-C/T/COR/42HV-5CCT/FF18/4P/10/1

FlexFit (Hybrid UL Type A + B) PLC/T

Lifetime



Lumen Maintenance Diagram - 16PL-C/T/COR/42HV-5CCT/FF18/4P/10/1

