

PowerLine™ 300 AC LED Tape Light



PowerLine offers the highest quality ETL Listed driverless LED lighting, with the greatest selection of options on the market today. The Alloy LED manufacturing facility in California offers built to order, ETL listed custom lengths of PowerLine with a lightning-fast lead time.

- Custom ETL Listed Lengths
- Available with Either Plug-In (UL 2388) or Hard-Wire (UL 1598) Configurations
- Cut Points Every 12 Inches
- Up to 337 Lumens / Foot



TECHNICAL INFORMATION

Stocked Color Temperature*	2700K, 3000K, 3500K, 4000K
Power Consumption per foot	4 Watts / 20.8mA
Input Voltage	120V AC
Lumens Per Foot	<337
Spool Length	164 ft.
Tape Dimensions (W x H)	0.6 x 0.23 in.
End Cap Dimensions (L x W x H)	0.69 x 0.69 x 0.44 in.
Maximum Run Length	164 ft.
Dimmable	Yes (Down to 25%)
Beam Angle	120°

Cut Points	Every 12 in.
Power Cable Length	2 ft. / 8 ft.
Diode Type	2835
Diodes per foot	44
Diode Spacing	0.27 in.
Location	Dry / Wet (IP65)
Operating Temperature	<194° F / 90° C
Ambient Temperature	-4° F to 107° F / -20° C to 42° C
Certifications / Standards	ETL Listed, UL 2388 (plug-in), UL 1598 (hard-wire), RoHS
Warranty	5 Years Indoor, 3 Years Outdoor

* In addition to stocked colors, a wide variety of Color Temperatures are also available by special order. Please call or email to order.

ETL LISTED CUSTOM LENGTHS

Use the SKU builder to fill in the CCT (Color Temperature.) and length (in feet).

Plug-in SKU Builder:

AL - 11 - 16 - A - [CCT] - [LENGTH]
 (Choice of Color Temperature.) (Choice of length 1 ft. increments)
 27 = 2700K 001-164 ft.**
 30 = 3000K
 35 = 3500K
 40 = 4000K

Hard-wire SKU Builder:

AL - 11 - 16 - B - [CCT] - [LENGTH]

Examples:

- AL - 11 - 16 - A - 27 - 064
Plug-in PowerLine 300 AC Tape - 2700K - 64 feet
- AL - 11 - 16 - B - 35 - 110
Hard-wire PowerLine 300 AC Tape - 3500K - 110 feet



ALLOY LED LIGHT LAB™ SPECIFICATIONS

Maximum Run = 164'

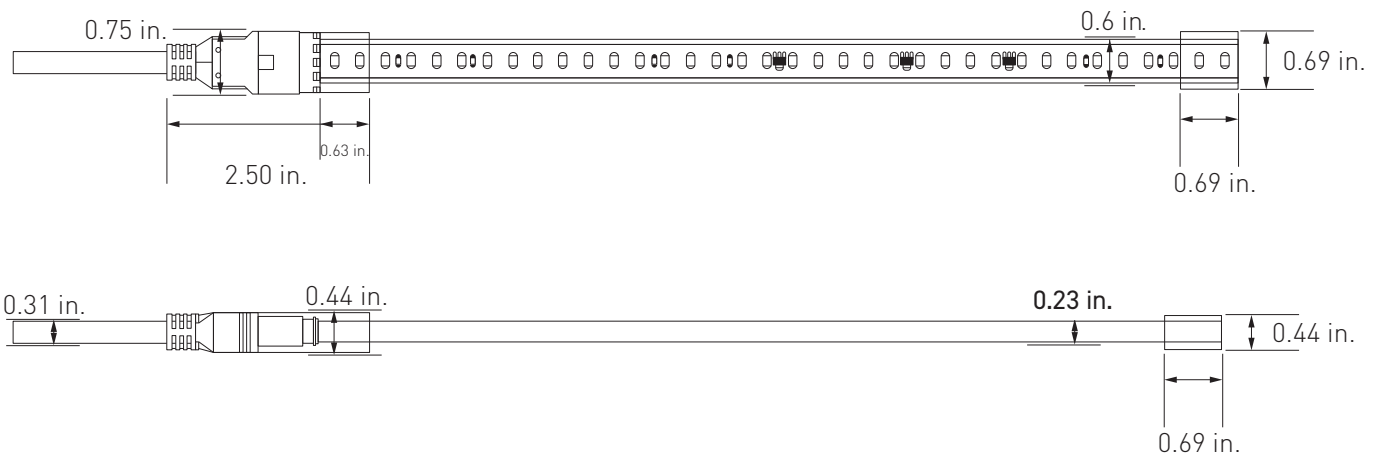
Item Number	Voltage	Color Temperature*	CRI	R9 Value	R13 Value	TM-30	CQS	Lumens per foot
AL-11-16-A-27-164	120V AC	2700K	96	93.4	98.9	94.9	93.6	294
AL-11-16-A-30-164	120V AC	3000K	97.5	96.1	98.2	95.8	95.5	335
AL-11-16-A-35-164	120V AC	3500K	97.8	98.2	99.3	95.9	97.2	337
AL-11-16-A-40-164	120V AC	4000K	96	84.3	98.7	93.8	95.5	336



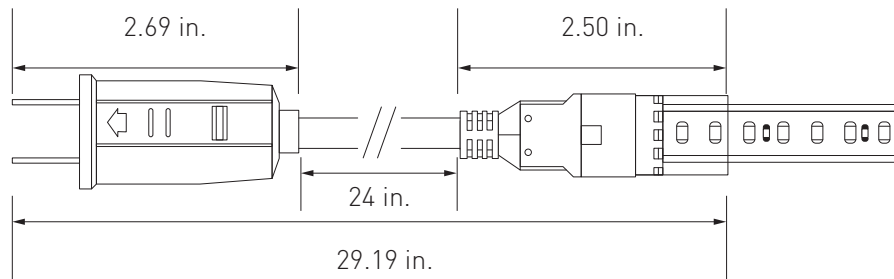
NOTE: ETL listing is voided when tape is cut in the field.

TAPE LIGHT DIMENSION DIAGRAMS

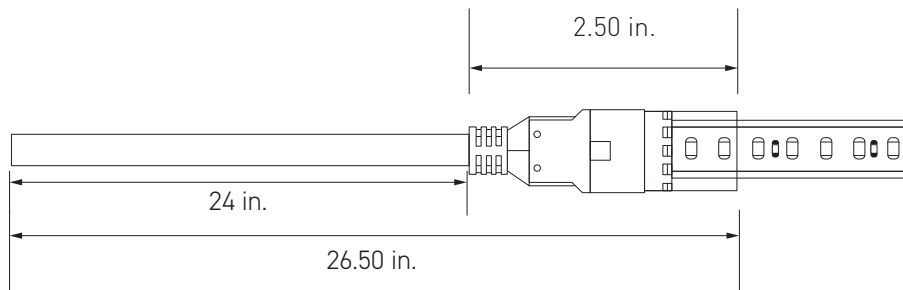
LED Strip with Power Connector and End Cap



Plug-In Configuration (UL 2388)



Hard-Wire Configuration (UL 1598)

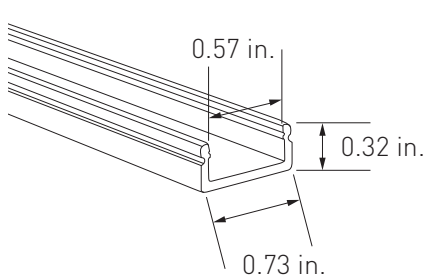


NOTE: Power cords are available in length up to 96 in. but additional cost apply.

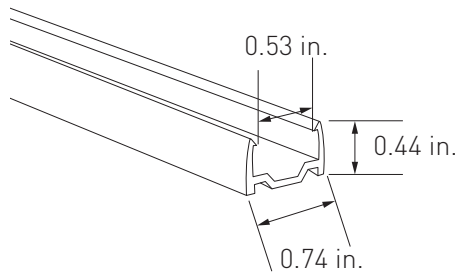
ACCESSORIES (SOLD SEPARATELY)

Mounting Accessories

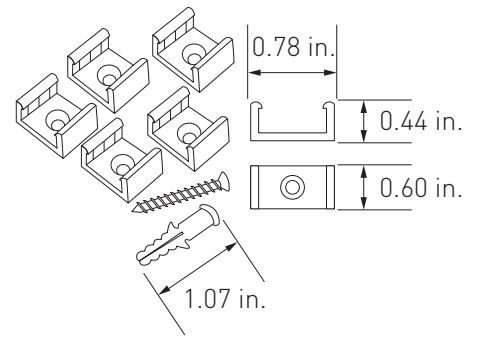
PowerLine Tape Light End Caps do not fit in any of the mounting tracks or channel kits.



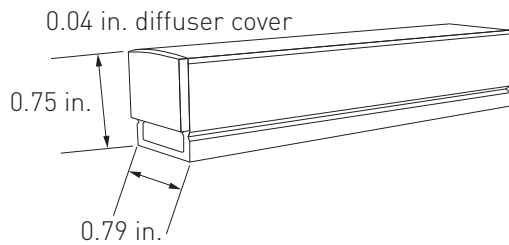
Universal Aluminum Mounting Track (Screws not included)
AL-11-99-9923-AL (4 ft. - Aluminum)



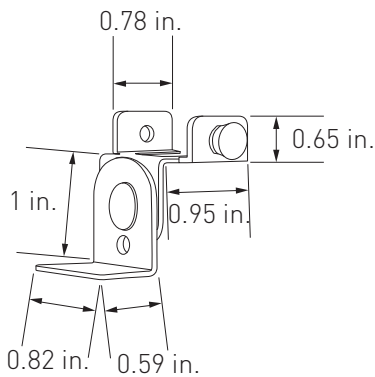
Universal Plastic Mounting Track (Screws not included)
AL-11-99-9930 (4 ft. - Plastic)



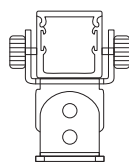
Universal Plastic Mounting Clips/Screws (Attach directly to PowerLine) White - Pack of 5
AL-11-16-9902-MC (5-pack)
Includes 5 screws (1 in.) and anchors



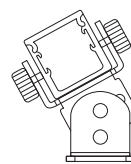
Universal Surface-Mount Channel Kit - 4ft.
1 Aluminum Channel, 1 Premium Diffuser Cover 1mm height, 2 End Caps, 4 Metal Mounting Clips/Screws
AL-11-99-9924-KIT



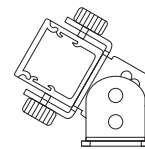
Universal Adjustable Channel Mounting Bracket/Screws
Compatible with Surface Mount Channel
AL-11-99-9986
Use 2 every 4 ft.



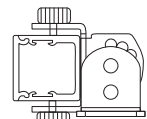
0°



30°



60°

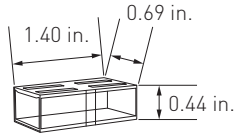


90°

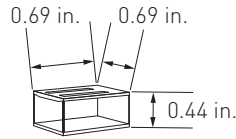
NOTE: The tape light end cap does not fit in the track.

ACCESSORIES (SOLD SEPARATELY)

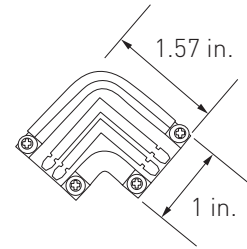
Additional Accessories



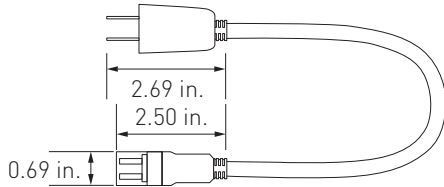
Universal Clear Tape-to-Tape Connector
AL-11-99-9902-DC



Universal End Cap
AL-11-99-9902-EC (Clear)

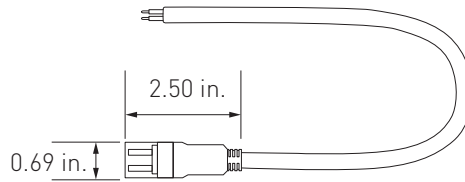


Universal L-Connector with Screws - 90 Degree
AL-11-99-9902-LC



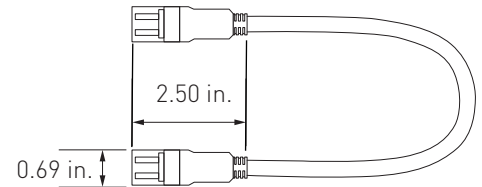
Plug-In Universal Power Cable*
AL-11-99-9902-USD-24IN (24 in. - White)
AL-11-99-9902-USD-96IN (96 in. - White)

**When measuring your job, please add 5.19 in. to your chosen length (24 in. or 96 in.) to account for the plugs.*



Hard-Wire Universal Power Feed Splice Connector*
AL-11-99-9902-SC-24IN (24 in. - White)
AL-11-99-9902-SC-96IN (96 in. - White)

**When measuring your job, please add 2.50 in. to your chosen length (24 in. or 96 in.) to account for the plugs.*

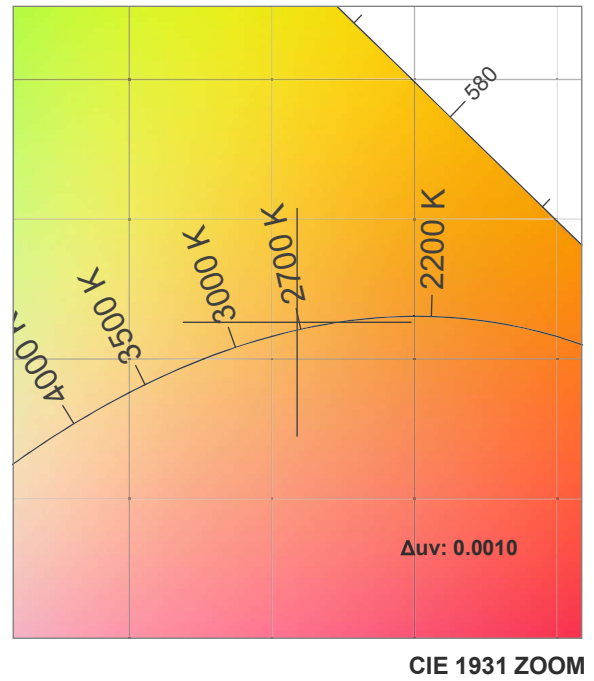
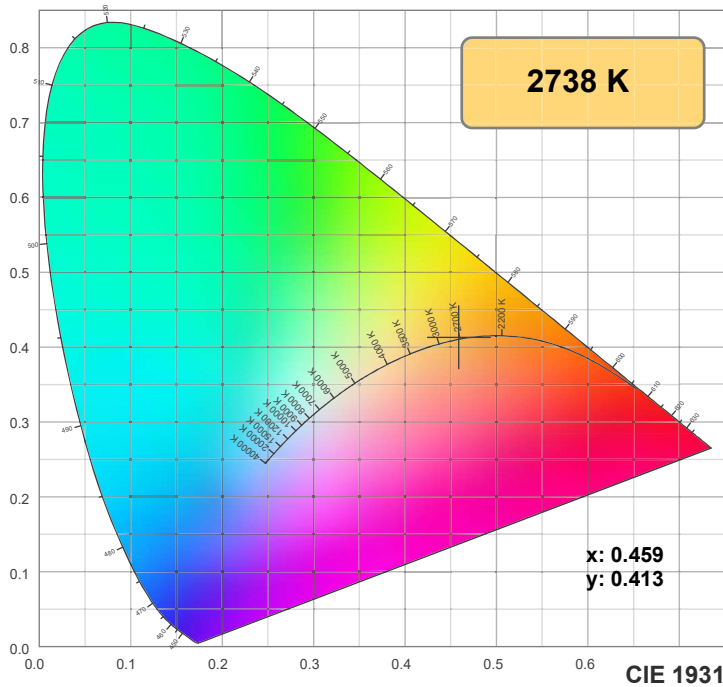


Universal Jumper Cable*
AL-11-99-9902-EXT-6IN (6 in. - White)
AL-11-99-9902-EXT-24IN (24 in. - White)

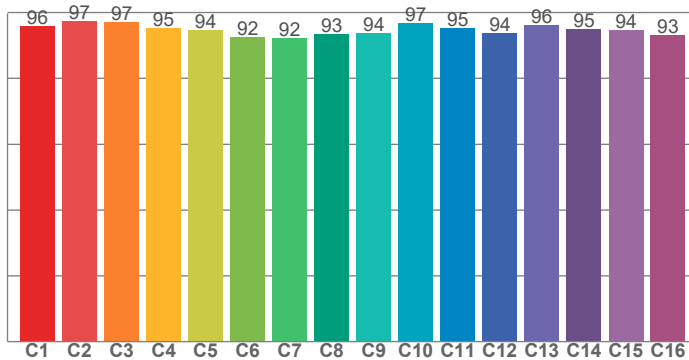
**When measuring your job, please add 5 in. to your chosen length (6 in. or 24 in.) to account for the plugs.*

Note: specifications are representative of the diode type and not a particular tape light article.

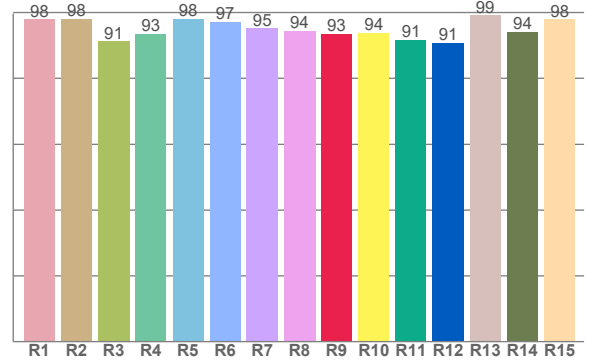
2700K



TM30: 94.9



CRI: 95.5 (R1-R8)



CRI R values, only R1-R8 are used to calculate final CRI value

R1	R2	R3	R4	R5	R6	R7	R8	R9	R10	R11	R12	R13	R14	R15
97.7	97.9	91.0	93.4	97.9	97.1	95.0	94.2	93.4	93.7	91.5	90.6	98.9	93.9	97.7

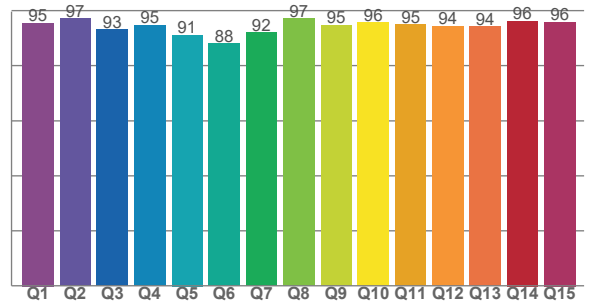
TM30 C values, 16 binned values out of total of 99 C values

C1	C2	C3	C4	C5	C6	C7	C8	C9	C10	C11	C12	C13	C14	C15	C16
95.7	97.2	96.8	95.0	94.4	92.4	92.1	93.4	93.6	96.5	95.2	93.5	96.1	94.7	94.4	93.0

CQS Q values

Q1	Q2	Q3	Q4	Q5	Q6	Q7	Q8	Q9	Q10	Q11	Q12	Q13	Q14	Q15
95.5	97.1	92.9	94.7	91.2	88.1	92.1	97.2	94.7	95.7	94.8	94.4	94.2	96.2	95.8

CQS: 93.6



Color parameters

Color temperature	Color rendering index	Red component	Color fidelity	Color gamut	Color quality scale	Color coordinate cie 1931	Color coordinate cie 1931	Color coordinate	Color coordinate	Color deviation from black body
CCT	CRI	CRI R9	TM30 Rf	TM30 Rg	CQS	x	y	u	v	Δuv
2738 K	95.5	93.4	94.9	104.0	93.6	0.459	0.413	0.261	0.352	0.0010

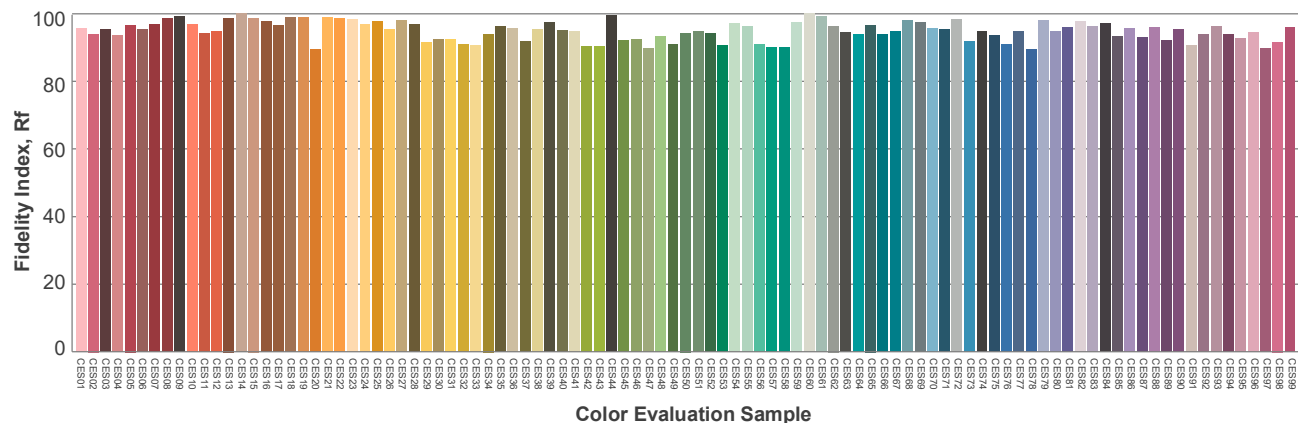
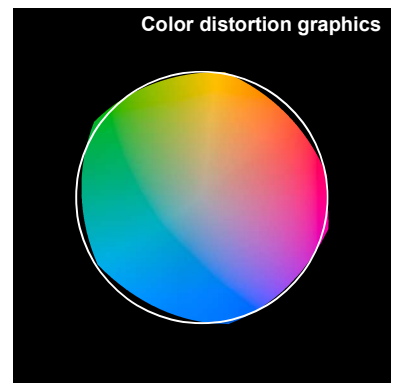
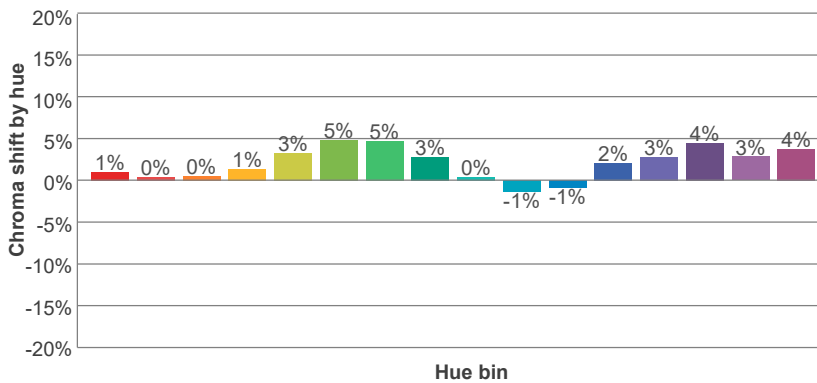
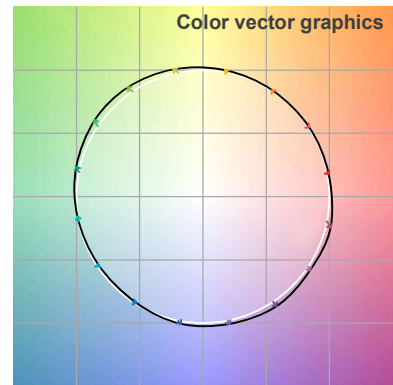
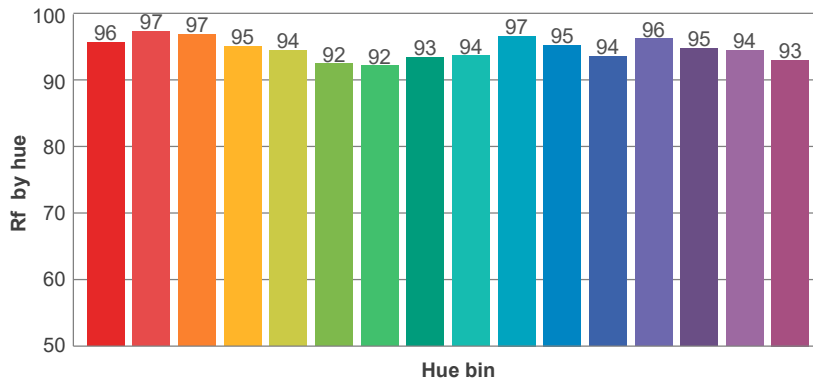
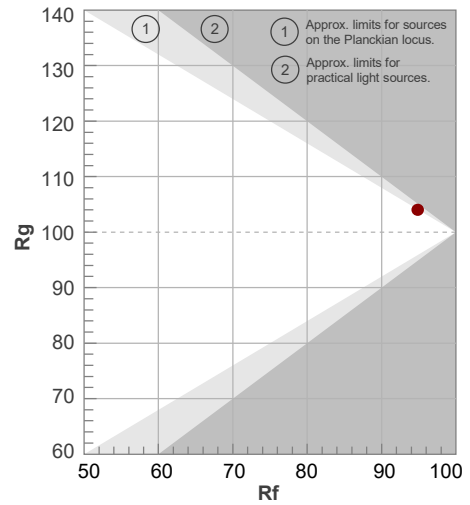
Note: specifications are representative of the diode type and not a particular tape light article.

2700K

Rf 94.9
Fidelity index Rf

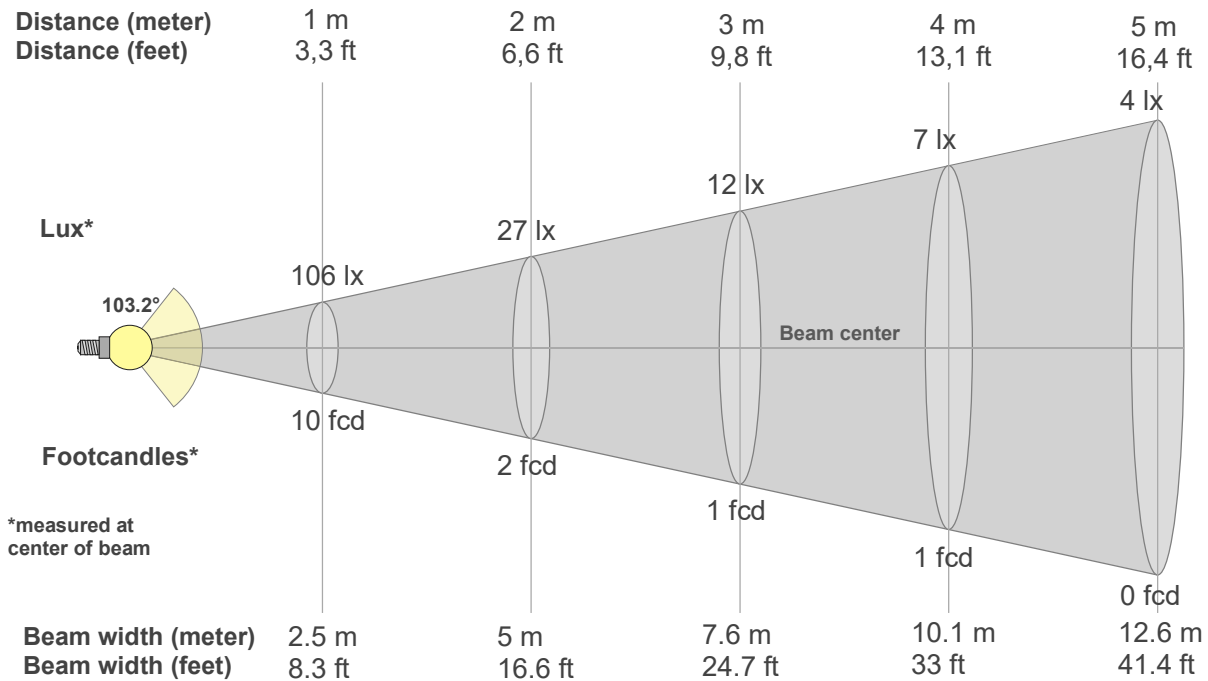
Rg 104.0
Gammut index Rg

		Graphic shifts (%)		
Hue Bin	R _f	Chroma	Hue	
1	96	1%	-2%	
2	97	0%	-1%	
3	97	0%	1%	
4	95	1%	2%	
5	94	3%	3%	
6	92	5%	2%	
7	92	5%	-3%	
8	93	3%	-3%	
9	94	0%	-4%	
10	97	-1%	-1%	
11	95	-1%	3%	
12	94	2%	2%	
13	96	3%	1%	
14	95	4%	0%	
15	94	3%	-2%	
16	93	4%	-4%	



Note: specifications are representative of the diode type and not a particular tape light article.

2700K



Beam intensities from 1-20m

1m	2m	3m	4m	5m	6m	7m	8m	9m	10m	11m	12m	13m	14m	15m	16m	17m	18m	19m	20m
3.3ft	6.6ft	9.8ft	13.1ft	16.4ft	19.7ft	23ft	26.2ft	29.5ft	32.8ft	36.1ft	39.4ft	42.7ft	45.9ft	49.2ft	52.5ft	55.8ft	59.1ft	62.3ft	65.6ft
106lx	27lx	12lx	7lx	4lx	3lx	2lx	2lx	1lx	1lx	1lx	1lx	1lx	1lx	0lx	0lx	0lx	0lx	0lx	0lx
9.9fcd	2.5fcd	1.1fcd	0.6fcd	0.4fcd	0.3fcd	0.2fcd	0.2fcd	0.1fcd	0.1fcd	0.1fcd	0.1fcd	0.1fcd	0.1fcd	0fcd	0fcd	0fcd	0fcd	0fcd	0fcd

Intensities in 0° c-plane

0°	5°	10°	15°	20°	25°	30°	35°	40°	45°	50°	55°	60°	65°	70°	75°	80°	85°	90°	95°
106	105	103	99	95	90	85	79	73	65	56	47	38	29	22	17	16	15	10	5
100%	99%	97%	94%	90%	85%	80%	75%	69%	61%	53%	44%	35%	27%	21%	16%	15%	14%	9%	5%

Intensities in 90° c-plane

0°	5°	10°	15°	20°	25°	30°	35°	40°	45°	50°	55°	60°	65°	70°	75°	80°	85°	90°	95°
106	105	103	99	95	90	85	79	73	65	56	47	38	29	22	17	16	15	10	5
100%	99%	97%	94%	90%	85%	80%	75%	69%	61%	53%	44%	35%	27%	21%	16%	15%	14%	9%	5%

Intensities in 180° c-plane

0°	5°	10°	15°	20°	25°	30°	35°	40°	45°	50°	55°	60°	65°	70°	75°	80°	85°	90°	95°
106	107	106	103	100	95	90	83	75	67	57	46	35	26	19	15	12	10	8	5
100%	100%	99%	97%	94%	90%	84%	78%	71%	63%	54%	43%	33%	25%	18%	14%	11%	9%	8%	5%

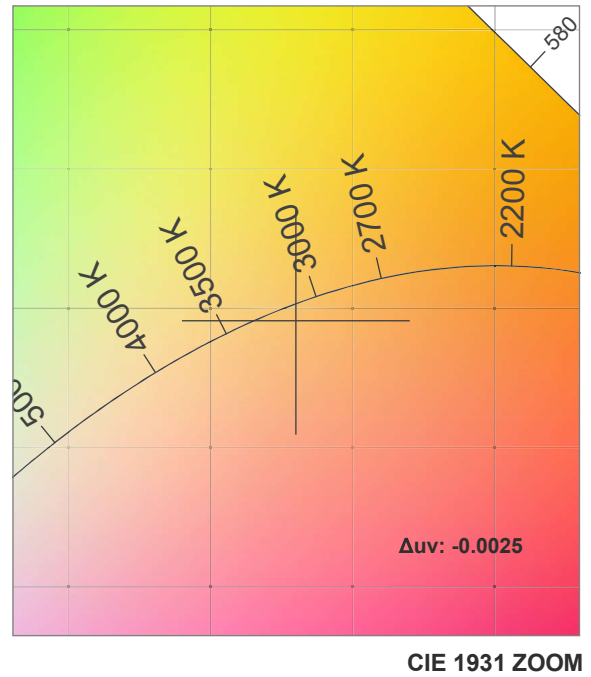
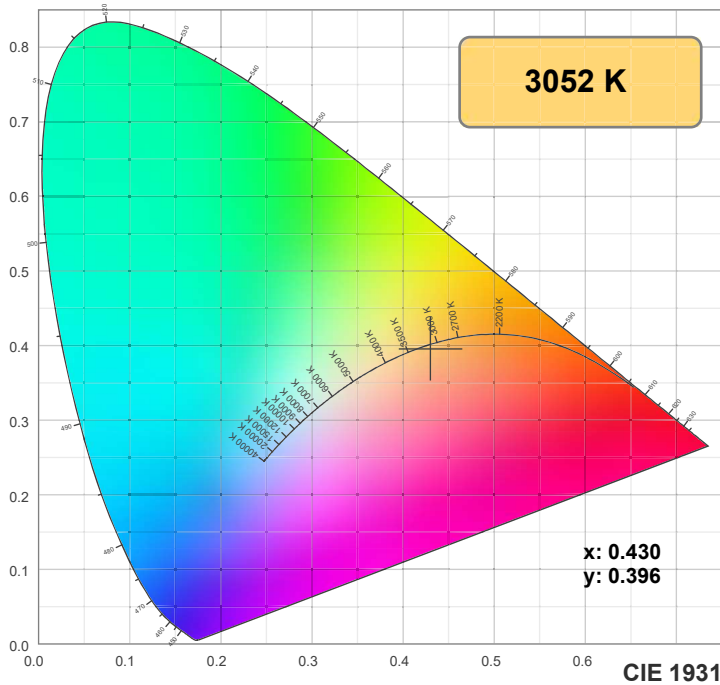
Intensities in 270° c-plane

0°	5°	10°	15°	20°	25°	30°	35°	40°	45°	50°	55°	60°	65°	70°	75°	80°	85°	90°	95°
106	107	106	103	100	95	90	83	75	67	57	46	35	26	19	15	12	10	8	5
100%	100%	99%	97%	94%	90%	84%	78%	71%	63%	54%	43%	33%	25%	18%	14%	11%	9%	8%	5%

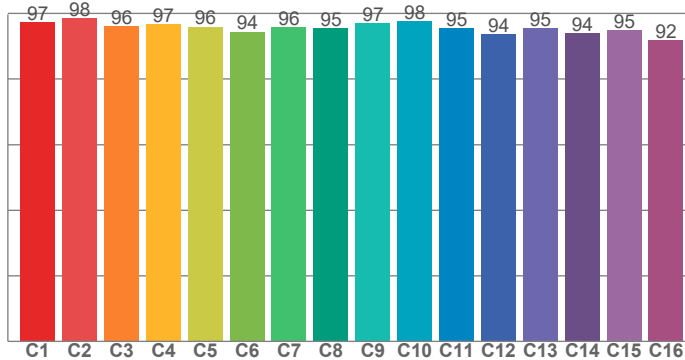
Beam angle 50%	Field angle 10%	Cutoff angle 2,5%	Intensity ratio in 120° cone	Intensity ratio in 90° cone
103.2°	171.7°	195.7°	76.5%	53.9%

Note: specifications are representative of the diode type and not a particular tape light article.

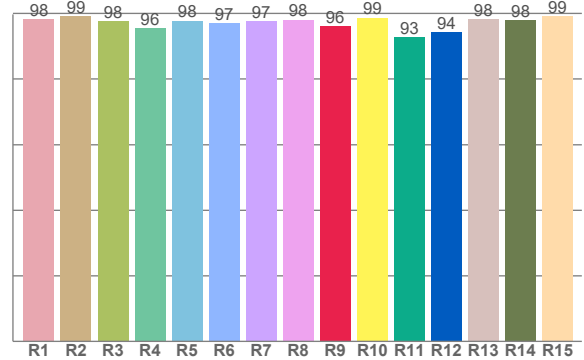
3000K



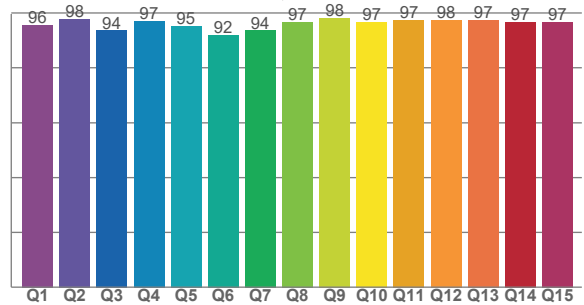
TM30: 95.8



CRI: 97.5 (R1-R8)



CQS: 95.5



CRI R values, only R1-R8 are used to calculate final CRI value

R1	R2	R3	R4	R5	R6	R7	R8	R9	R10	R11	R12	R13	R14	R15
98.1	99.0	97.5	95.6	97.7	96.9	97.5	98.0	96.1	98.6	92.7	94.3	98.2	97.9	99.2

TM30 C values, 16 binned values out of total of 99 C values

C1	C2	C3	C4	C5	C6	C7	C8	C9	C10	C11	C12	C13	C14	C15	C16
97.3	98.4	95.9	96.6	95.9	94.3	95.6	95.5	96.9	97.5	95.4	93.6	95.5	93.8	94.9	91.9

CQS Q values

Q1	Q2	Q3	Q4	Q5	Q6	Q7	Q8	Q9	Q10	Q11	Q12	Q13	Q14	Q15
95.5	97.8	93.6	97.1	95.1	91.9	93.6	96.7	98.1	96.7	97.4	97.5	97.4	96.7	96.7

Color parameters

Color temperature	Color rendering index	Red component	Color fidelity	Color gamut	Color quality scale	Color coordinate cie 1931	Color coordinate cie 1931	Color coordinate	Color coordinate	Color division from black body
CCT	CRI	CRI R9	TM30 Rf	TM30 Rg	CQS	x	y	u	v	Δuv
3052 K	97.5	96.1	95.8	103.3	95.5	0.430	0.396	0.250	0.345	-0.0025

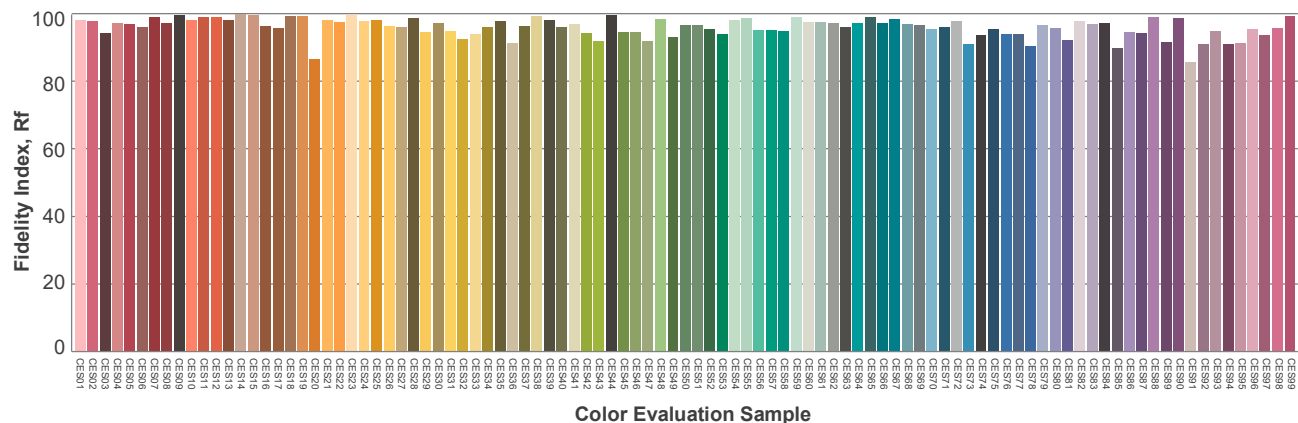
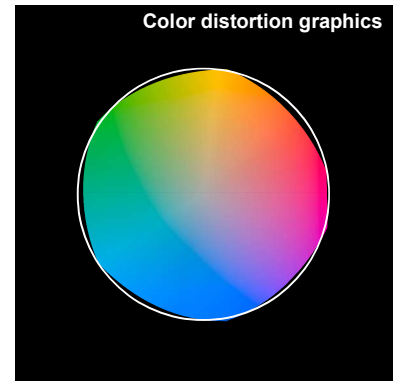
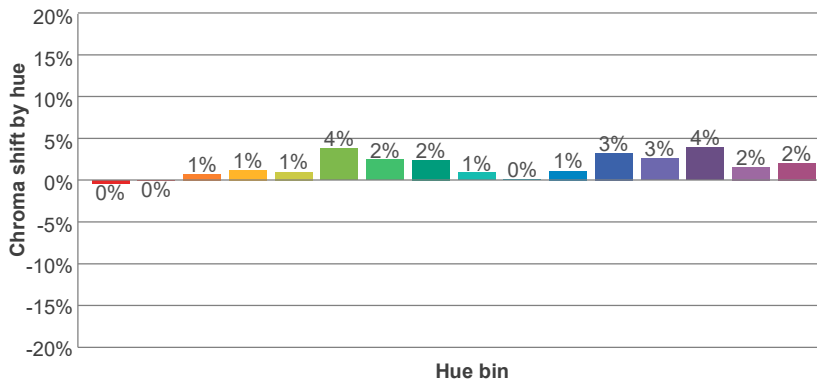
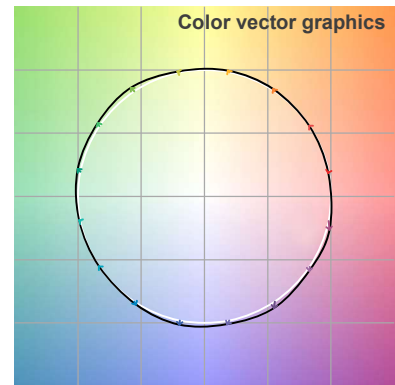
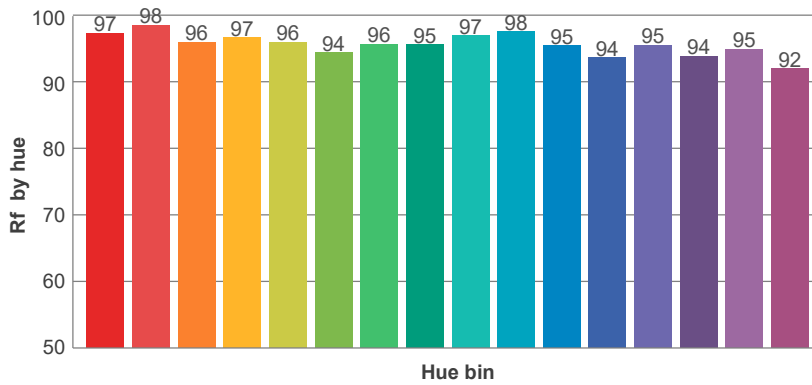
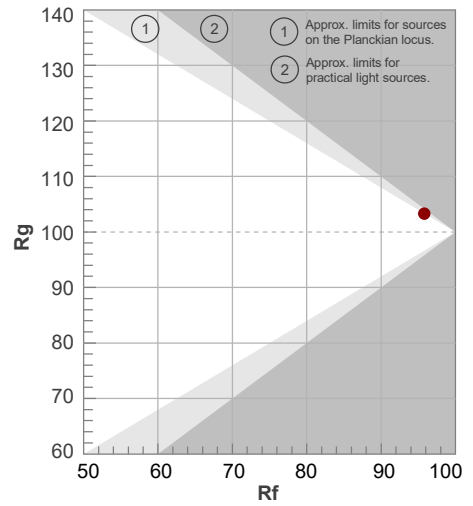
Note: specifications are representative of the diode type and not a particular tape light article.

3000K

Rf 95.8
Fidelity index Rf

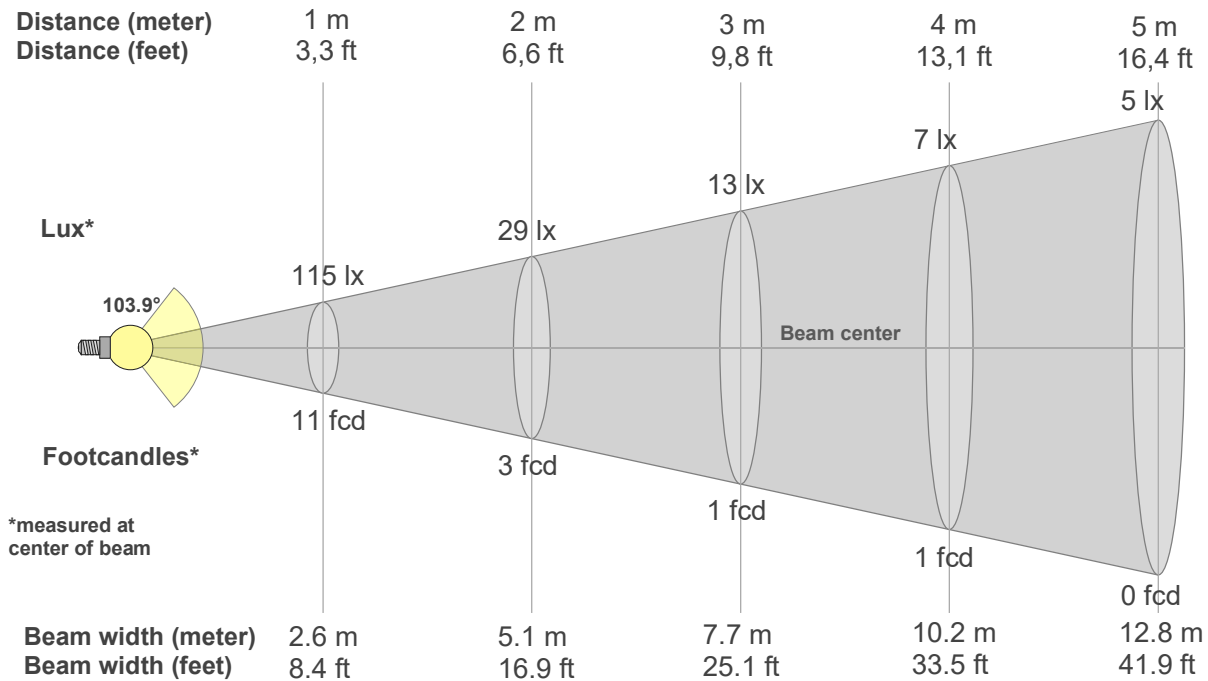
Rg 103.3
Gammut index Rg

Hue Bin	R _f	Graphic shifts (%)	
		Chroma	Hue
1	97	0%	-1%
2	98	0%	0%
3	96	1%	2%
4	97	1%	1%
5	96	1%	2%
6	94	4%	1%
7	96	2%	-1%
8	95	2%	-2%
9	97	1%	-1%
10	98	0%	0%
11	95	1%	2%
12	94	3%	0%
13	95	3%	-2%
14	94	4%	-3%
15	95	2%	-3%
16	92	2%	-6%



Note: specifications are representative of the diode type and not a particular tape light article.

3000K



Beam intensities from 1-20m

1m	2m	3m	4m	5m	6m	7m	8m	9m	10m	11m	12m	13m	14m	15m	16m	17m	18m	19m	20m
3.3ft	6.6ft	9.8ft	13.1ft	16.4ft	19.7ft	23ft	26.2ft	29.5ft	32.8ft	36.1ft	39.4ft	42.7ft	45.9ft	49.2ft	52.5ft	55.8ft	59.1ft	62.3ft	65.6ft
115lx	29lx	13lx	7lx	5lx	3lx	2lx	2lx	1lx	1lx	1lx	1lx	1lx	1lx	1lx	0lx	0lx	0lx	0lx	0lx
10.7fcd	2.7fcd	1.2fcd	0.7fcd	0.4fcd	0.3fcd	0.2fcd	0.2fcd	0.1fcd	0.1fcd	0.1fcd	0.1fcd	0.1fcd	0.1fcd	0.1fcd	0fcd	0fcd	0fcd	0fcd	0fcd

Intensities in 0° c-plane

0°	5°	10°	15°	20°	25°	30°	35°	40°	45°	50°	55°	60°	65°	70°	75°	80°	85°	90°	95°
115	113	111	107	104	99	95	89	81	72	62	51	41	33	29	27	28	21	13	4
100%	99%	96%	94%	90%	87%	83%	78%	71%	63%	54%	44%	36%	29%	25%	23%	25%	18%	11%	4%

Intensities in 90° c-plane

0°	5°	10°	15°	20°	25°	30°	35°	40°	45°	50°	55°	60°	65°	70°	75°	80°	85°	90°	95°
115	113	111	107	104	99	95	89	81	72	62	51	41	33	29	27	28	21	13	4
100%	99%	96%	94%	90%	87%	83%	78%	71%	63%	54%	44%	36%	29%	25%	23%	25%	18%	11%	4%

Intensities in 180° c-plane

0°	5°	10°	15°	20°	25°	30°	35°	40°	45°	50°	55°	60°	65°	70°	75°	80°	85°	90°	95°
115	115	114	112	108	103	97	89	80	71	61	51	41	31	24	18	13	12	11	7
100%	100%	99%	97%	94%	90%	84%	78%	70%	62%	53%	45%	36%	27%	21%	16%	12%	10%	9%	6%

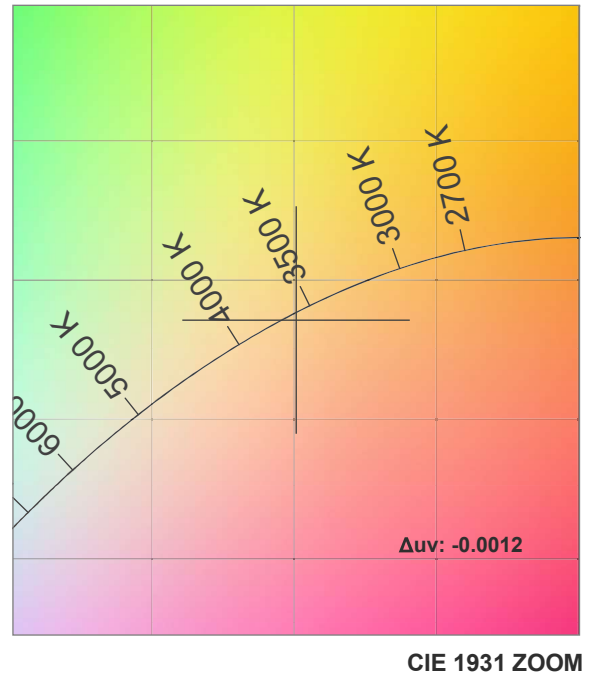
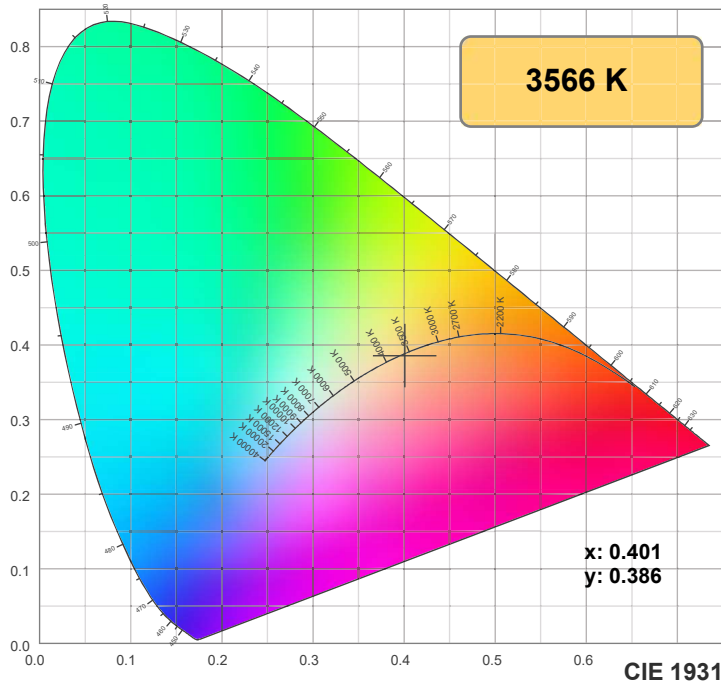
Intensities in 270° c-plane

0°	5°	10°	15°	20°	25°	30°	35°	40°	45°	50°	55°	60°	65°	70°	75°	80°	85°	90°	95°
115	115	114	112	108	103	97	89	80	71	61	51	41	31	24	18	13	12	11	7
100%	100%	99%	97%	94%	90%	84%	78%	70%	62%	53%	45%	36%	27%	21%	16%	12%	10%	9%	6%

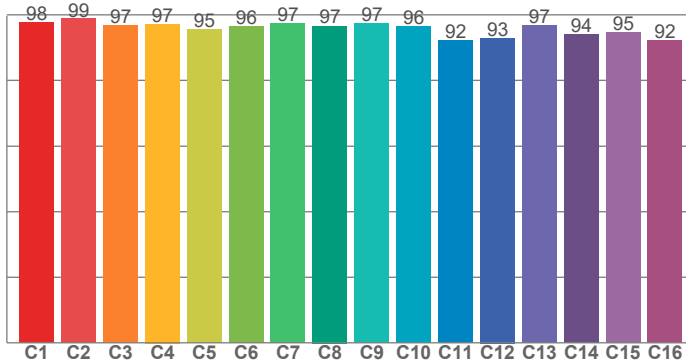
Beam angle 50%	Field angle 10%	Cutoff angle 2,5%	Intensity ratio in 120° cone	Intensity ratio in 90° cone
103.9°	179.5°	360°	73.0%	51.4%

Note: specifications are representative of the diode type and not a particular tape light article.

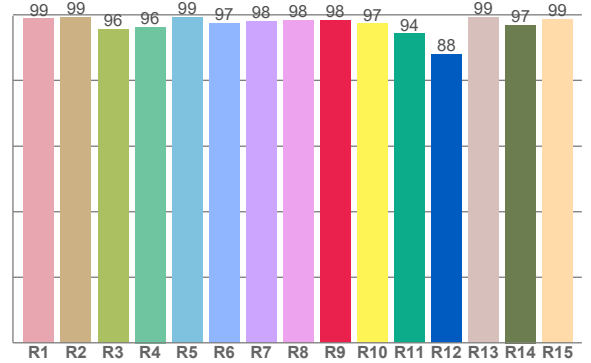
3500K



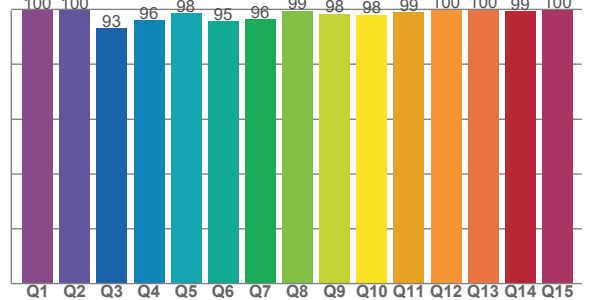
TM30: 95.9



CRI: 97.8 (R1-R8)



CQS: 97.2



CRI R values, only R1-R8 are used to calculate final CRI value

R1	R2	R3	R4	R5	R6	R7	R8	R9	R10	R11	R12	R13	R14	R15
98.7	99.1	95.5	96.2	99.2	97.4	97.9	98.2	98.2	97.2	94.2	87.8	99.3	96.9	98.6

TM30 C values, 16 binned values out of total of 99 C values

C1	C2	C3	C4	C5	C6	C7	C8	C9	C10	C11	C12	C13	C14	C15	C16
97.6	98.7	96.8	97.2	95.5	96.4	97.4	96.6	97.4	96.5	92.2	92.9	96.8	94.0	94.5	92.2

CQS Q values

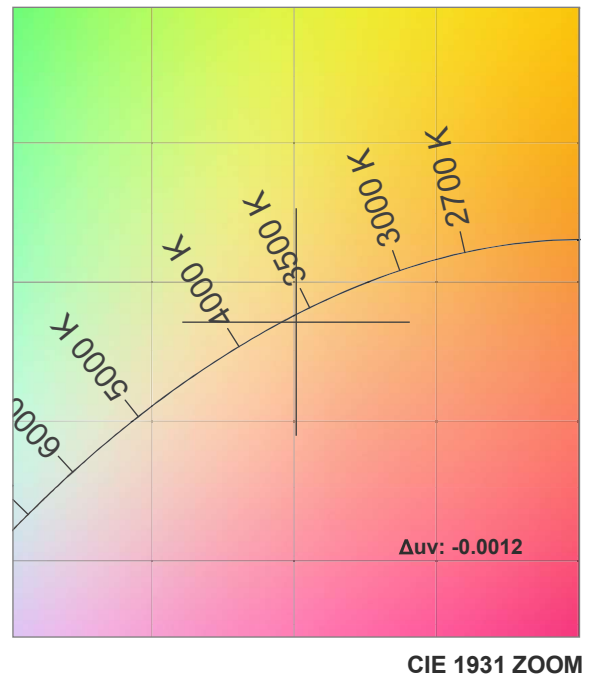
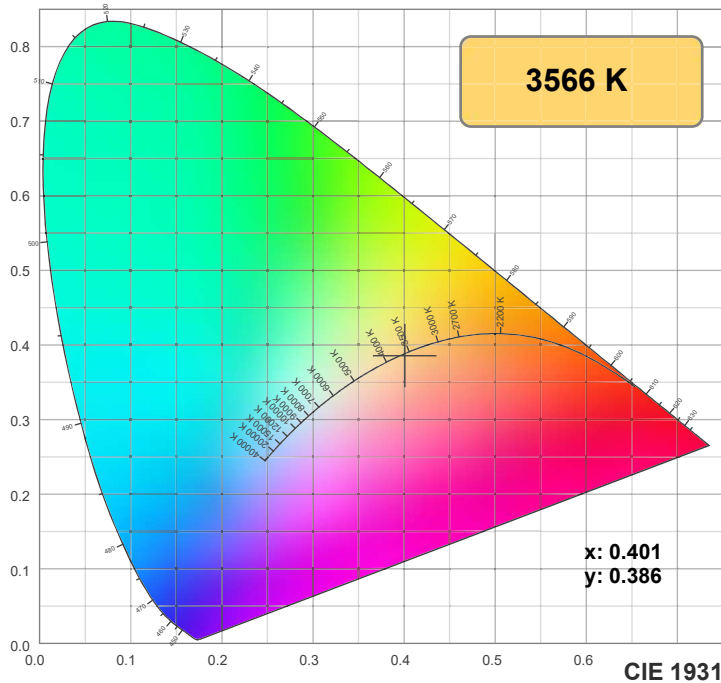
Q1	Q2	Q3	Q4	Q5	Q6	Q7	Q8	Q9	Q10	Q11	Q12	Q13	Q14	Q15
99.6	99.5	92.9	95.9	96.3	95.4	96.2	99.4	98.3	97.9	96.9	99.7	99.7	99.2	99.7

Color parameters

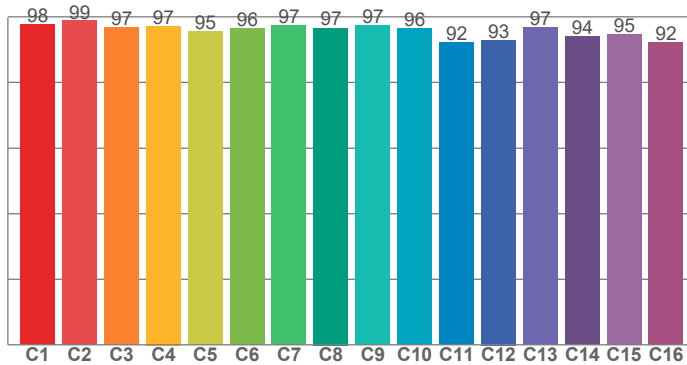
Color temperature	Color rendering index	Red component	Color fidelity	Color gamut	Color quality scale	Color coordinate cie 1931	Color coordinate cie 1931	Color coordinate	Color coordinate	Color deviation from black body
CCT	CRI	CRI R9	TM30 Rf	TM30 Rg	CQS	x	y	u	v	Δuv
3566 K	97.8	98.2	95.9	102.6	97.2	0.401	0.386	0.235	0.339	-0.0012

Note: specifications are representative of the diode type and not a particular tape light article.

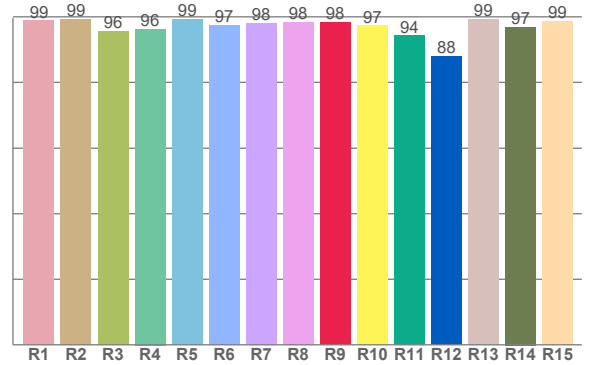
3500K



TM30: 95.9



CRI: 97.8 (R1-R8)



CRI R values, only R1-R8 are used to calculate final CRI value

R1	R2	R3	R4	R5	R6	R7	R8	R9	R10	R11	R12	R13	R14	R15
98.7	99.1	95.5	96.2	99.2	97.4	97.9	98.2	98.2	97.2	94.2	87.8	99.3	96.9	98.6

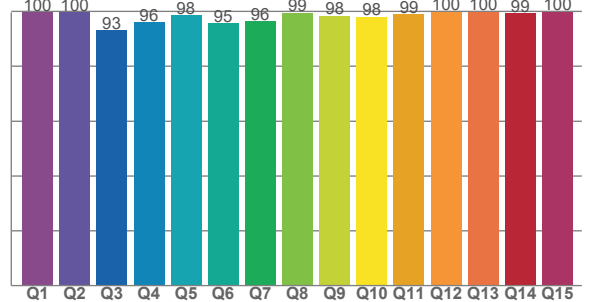
TM30 C values, 16 binned values out of total of 99 C values

C1	C2	C3	C4	C5	C6	C7	C8	C9	C10	C11	C12	C13	C14	C15	C16
97.6	98.7	96.8	97.2	95.5	96.4	97.4	96.6	97.4	96.5	92.2	92.9	96.8	94.0	94.5	92.2

CQS Q values

Q1	Q2	Q3	Q4	Q5	Q6	Q7	Q8	Q9	Q10	Q11	Q12	Q13	Q14	Q15
99.6	99.5	92.9	95.9	96.3	95.4	96.2	99.4	98.3	97.9	96.9	99.7	99.7	99.2	99.7

CQS: 97.2

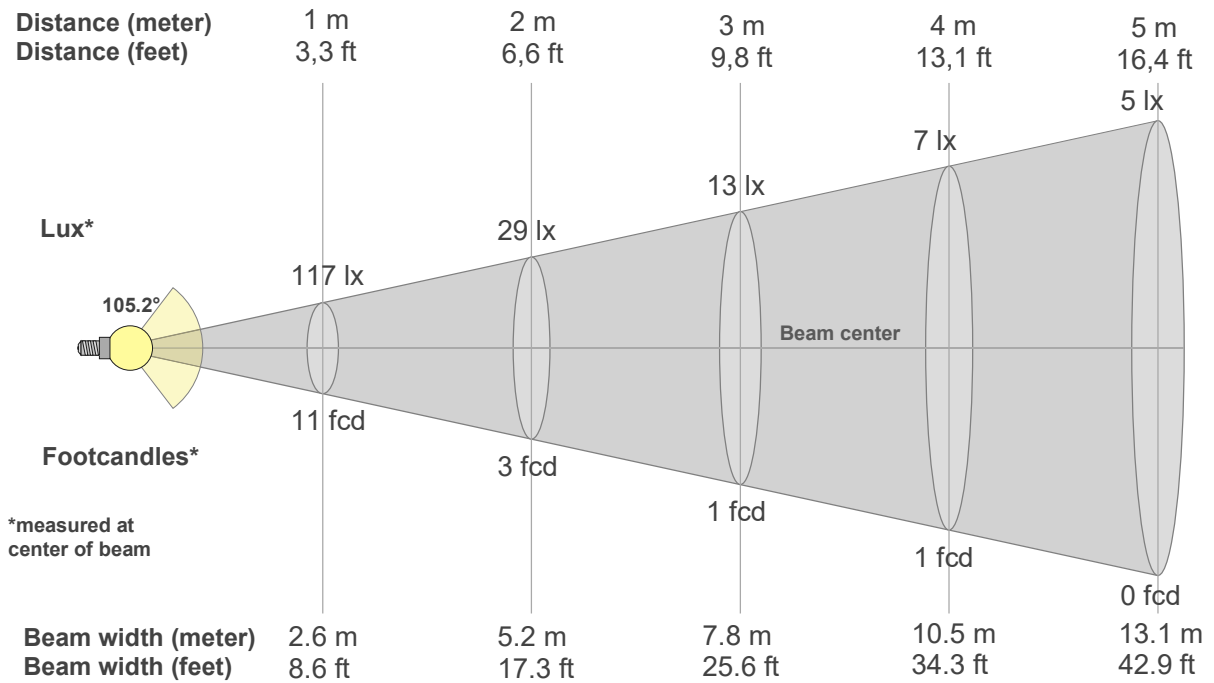


Color parameters

Color temperature	Color rendering index	Red component	Color fidelity	Color gamut	Color quality scale	Color coordinate cie 1931	Color coordinate cie 1931	Color coordinate	Color coordinate	Color deviation from black body
CCT	CRI	CRI R9	TM30 Rf	TM30 Rg	CQS	x	y	u	v	Δuv
3566 K	97.8	98.2	95.9	102.6	97.2	0.401	0.386	0.235	0.339	-0.0012

Note: specifications are representative of the diode type and not a particular tape light article.

3000K



Beam intensities from 1-20m

1m	2m	3m	4m	5m	6m	7m	8m	9m	10m	11m	12m	13m	14m	15m	16m	17m	18m	19m	20m
3.3ft	6.6ft	9.8ft	13.1ft	16.4ft	19.7ft	23ft	26.2ft	29.5ft	32.8ft	36.1ft	39.4ft	42.7ft	45.9ft	49.2ft	52.5ft	55.8ft	59.1ft	62.3ft	65.6ft
117lx	29lx	13lx	7lx	5lx	3lx	2lx	2lx	1lx	1lx	1lx	1lx	1lx	1lx	1lx	0lx	0lx	0lx	0lx	0lx
10.9fcd	2.7fcd	1.2fcd	0.7fcd	0.4fcd	0.3fcd	0.2fcd	0.2fcd	0.1fcd	0.1fcd	0.1fcd	0.1fcd	0.1fcd	0.1fcd	0fcd	0fcd	0fcd	0fcd	0fcd	0fcd

Intensities in 0° c-plane

0°	5°	10°	15°	20°	25°	30°	35°	40°	45°	50°	55°	60°	65°	70°	75°	80°	85°	90°	95°
117	116	113	110	106	101	96	90	83	74	64	53	43	34	26	22	19	20	13	7
100%	99%	97%	94%	91%	86%	82%	77%	71%	63%	55%	46%	37%	29%	22%	19%	16%	17%	11%	6%

Intensities in 90° c-plane

0°	5°	10°	15°	20°	25°	30°	35°	40°	45°	50°	55°	60°	65°	70°	75°	80°	85°	90°	95°
117	116	113	110	106	101	96	90	83	74	64	53	43	34	26	22	19	20	13	7
100%	99%	97%	94%	91%	86%	82%	77%	71%	63%	55%	46%	37%	29%	22%	19%	16%	17%	11%	6%

Intensities in 180° c-plane

0°	5°	10°	15°	20°	25°	30°	35°	40°	45°	50°	55°	60°	65°	70°	75°	80°	85°	90°	95°
117	117	116	114	111	107	101	94	86	76	65	53	39	30	22	16	13	11	10	5
100%	100%	99%	98%	95%	91%	86%	80%	73%	65%	55%	45%	33%	25%	19%	13%	11%	9%	8%	4%

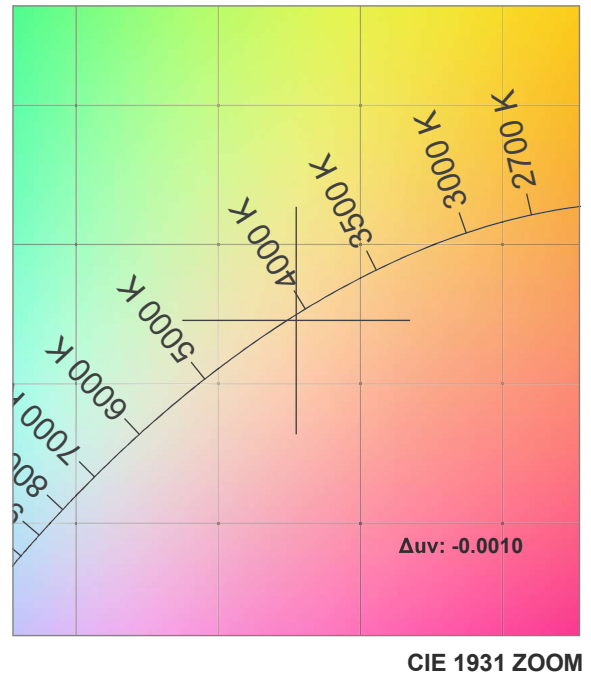
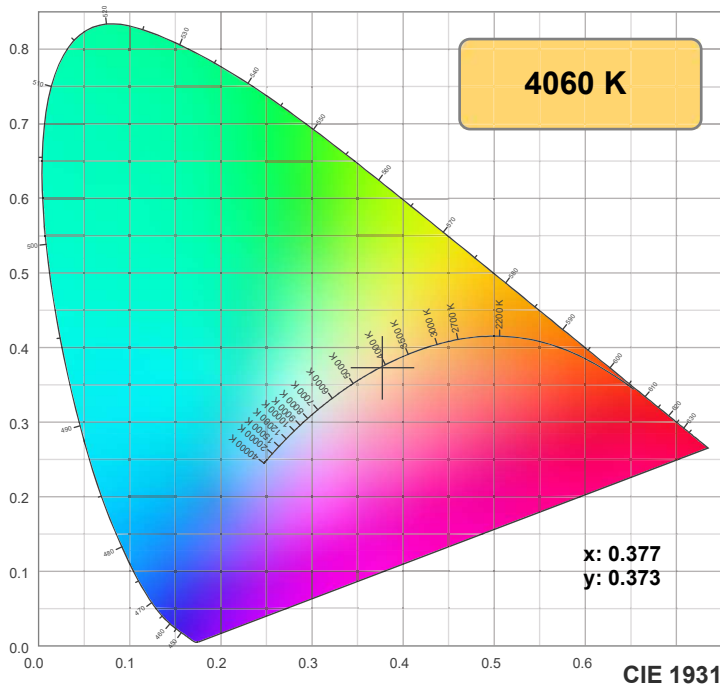
Intensities in 270° c-plane

0°	5°	10°	15°	20°	25°	30°	35°	40°	45°	50°	55°	60°	65°	70°	75°	80°	85°	90°	95°
117	117	116	114	111	107	101	94	86	76	65	53	39	30	22	16	13	11	10	5
100%	100%	99%	98%	95%	91%	86%	80%	73%	65%	55%	45%	33%	25%	19%	13%	11%	9%	8%	4%

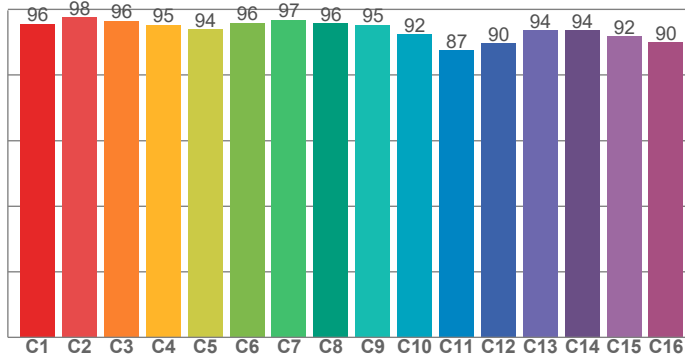
Beam angle 50%	Field angle 10%	Cutoff angle 2,5%	Intensity ratio in 120° cone	Intensity ratio in 90° cone
105.2°	173.1°	360°	75.3%	52.8%

Note: specifications are representative of the diode type and not a particular tape light article.

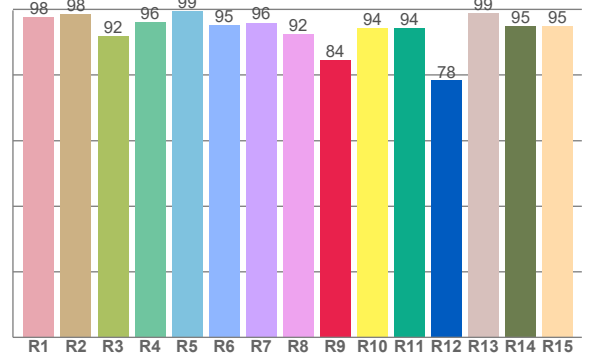
4000K



TM30: 93.8



CRI: 95.9 (R1-R8)



CRI R values, only R1-R8 are used to calculate final CRI value

R1	R2	R3	R4	R5	R6	R7	R8	R9	R10	R11	R12	R13	R14	R15
97.7	98.4	91.9	96.1	99.5	95.1	95.9	92.4	84.3	94.2	94.3	78.2	98.7	94.8	94.9

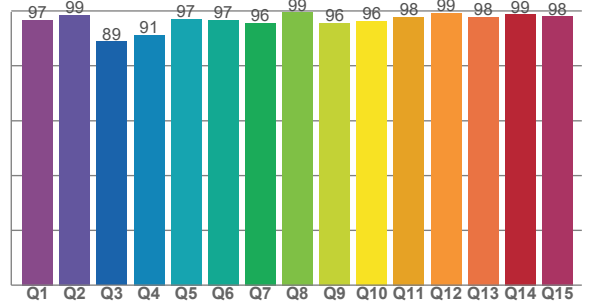
TM30 C values, 16 binned values out of total of 99 C values

C1	C2	C3	C4	C5	C6	C7	C8	C9	C10	C11	C12	C13	C14	C15	C16
95.5	97.5	96.5	95.3	93.8	95.9	96.8	95.7	95.2	92.4	87.5	89.6	93.6	93.6	91.7	89.8

CQS Q values

Q1	Q2	Q3	Q4	Q5	Q6	Q7	Q8	Q9	Q10	Q11	Q12	Q13	Q14	Q15
96.6	98.6	88.9	91.3	97.1	96.8	95.7	99.5	95.6	96.4	97.9	99.3	97.8	98.8	98.1

CQS: 95.5



Color parameters

Color temperature	Color rendering index	Red component	Color fidelity	Color gamut	Color quality scale	Color coordinate cie 1931	Color coordinate cie 1931	Color coordinate	Color coordinate	Color deviation from black body
CCT	CRI	CRI R9	TM30 Rf	TM30 Rg	CQS	x	y	u	v	Δuv
4060 K	95.9	84.3	93.8	102.9	95.5	0.377	0.373	0.225	0.333	-0.0010

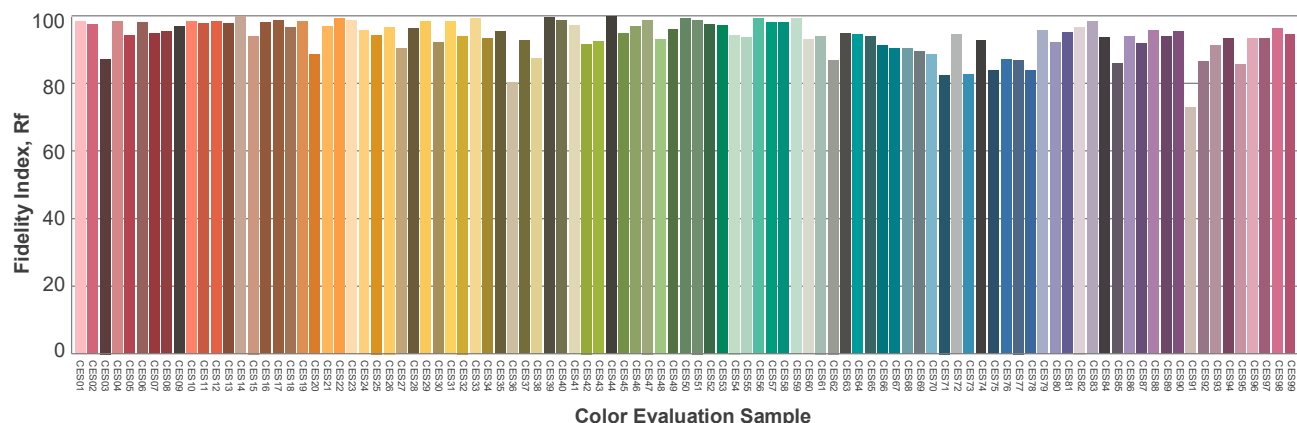
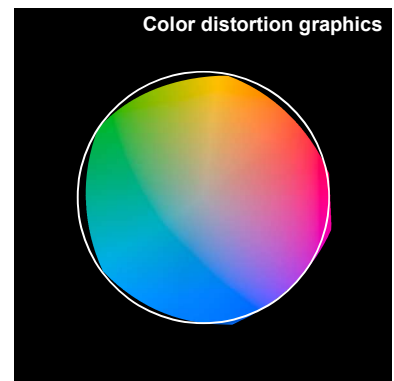
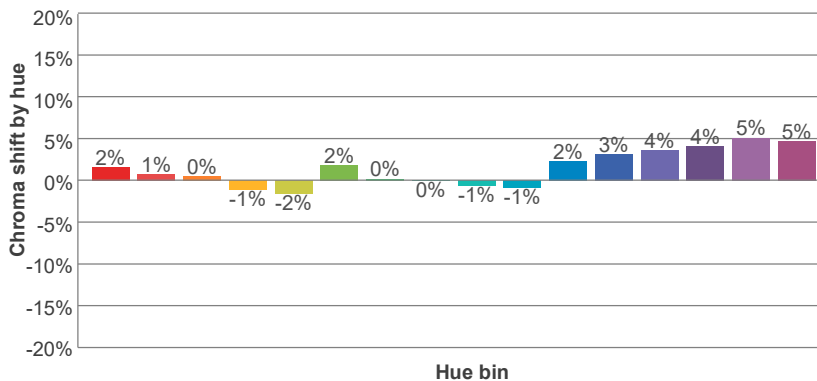
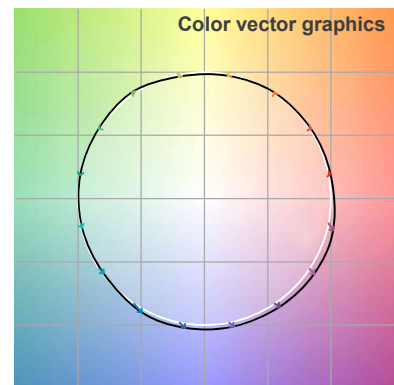
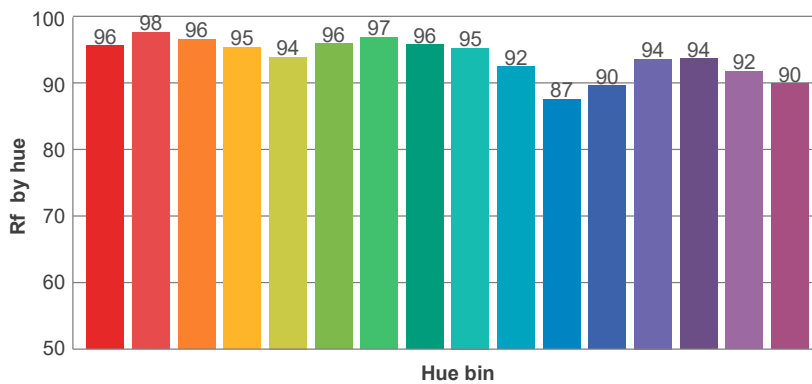
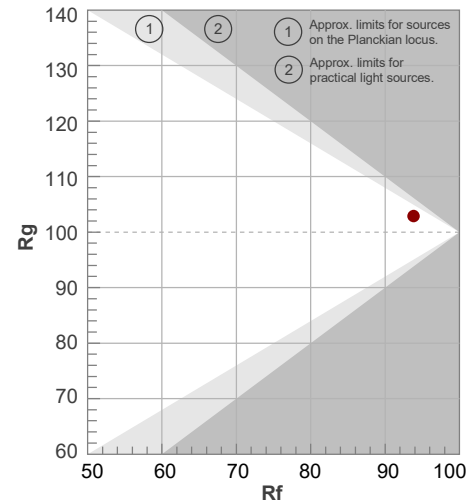
Note: specifications are representative of the diode type and not a particular tape light article.

4000K

Rf 93.8
Fidelity index Rf

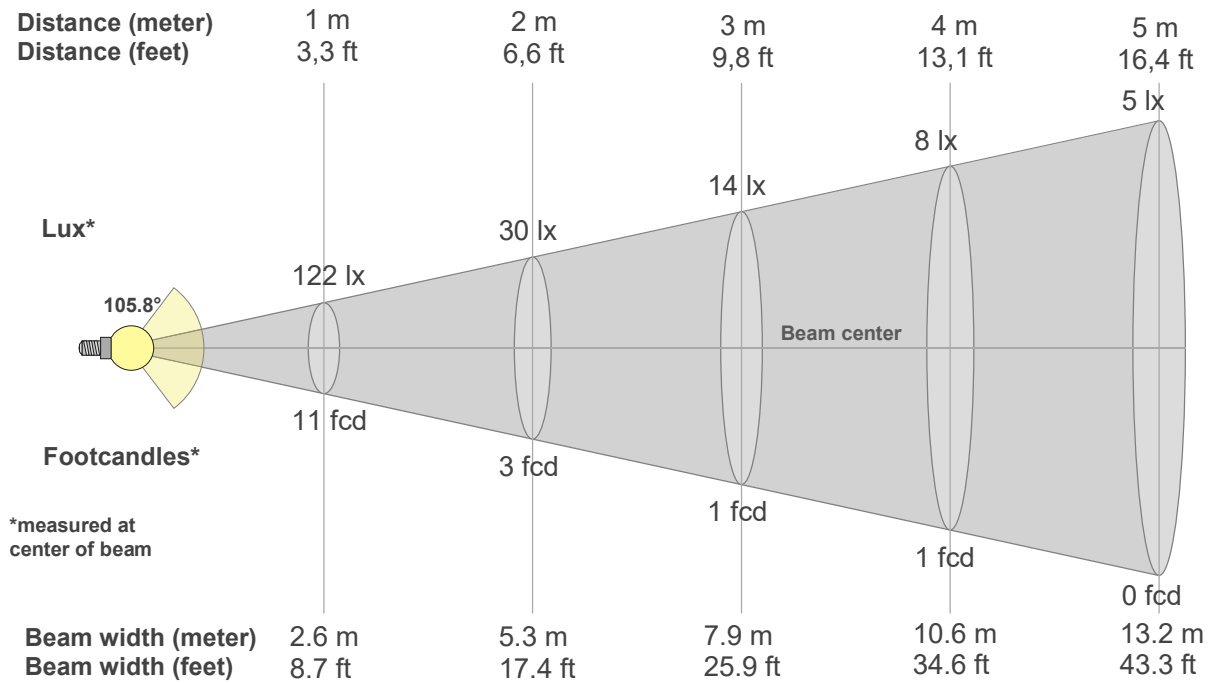
Rg 102.9
Gammut index Rg

Hue Bin	R _f	Graphic shifts (%)	
		Chroma	Hue
1	96	2%	-1%
2	98	1%	-1%
3	96	0%	1%
4	95	-1%	1%
5	94	-2%	1%
6	96	2%	1%
7	97	0%	0%
8	96	0%	1%
9	95	-1%	3%
10	92	-1%	5%
11	87	2%	8%
12	90	3%	5%
13	94	4%	3%
14	94	4%	2%
15	92	5%	-1%
16	90	5%	-5%



Note: specifications are representative of the diode type and not a particular tape light article.

4000K



Beam intensities from 1-20m

1m	2m	3m	4m	5m	6m	7m	8m	9m	10m	11m	12m	13m	14m	15m	16m	17m	18m	19m	20m
3.3ft	6.6ft	9.8ft	13.1ft	16.4ft	19.7ft	23ft	26.2ft	29.5ft	32.8ft	36.1ft	39.4ft	42.7ft	45.9ft	49.2ft	52.5ft	55.8ft	59.1ft	62.3ft	65.6ft
122lx	30lx	14lx	8lx	5lx	3lx	2lx	2lx	2lx	1lx	1lx	1lx	1lx	1lx	1lx	0lx	0lx	0lx	0lx	0lx
11.3fcd	2.8fcd	1.3fcd	0.7fcd	0.5fcd	0.3fcd	0.2fcd	0.2fcd	0.1fcd	0.1fcd	0.1fcd	0.1fcd	0.1fcd	0.1fcd	0.1fcd	0fcd	0fcd	0fcd	0fcd	0fcd

Intensities in 0° c-plane

0°	5°	10°	15°	20°	25°	30°	35°	40°	45°	50°	55°	60°	65°	70°	75°	80°	85°	90°	95°
122	121	118	115	111	106	100	93	86	78	68	56	45	34	25	18	13	11	7	4
100%	99%	97%	95%	91%	87%	82%	77%	71%	64%	56%	46%	37%	28%	20%	14%	10%	9%	6%	3%

Intensities in 90° c-plane

0°	5°	10°	15°	20°	25°	30°	35°	40°	45°	50°	55°	60°	65°	70°	75°	80°	85°	90°	95°
122	121	118	115	111	106	100	93	86	78	68	56	45	34	25	18	13	11	7	4
100%	99%	97%	95%	91%	87%	82%	77%	71%	64%	56%	46%	37%	28%	20%	14%	10%	9%	6%	3%

Intensities in 180° c-plane

0°	5°	10°	15°	20°	25°	30°	35°	40°	45°	50°	55°	60°	65°	70°	75°	80°	85°	90°	95°
122	122	120	117	114	109	103	96	88	80	68	55	41	30	21	15	12	9	7	3
100%	100%	99%	96%	93%	89%	85%	79%	72%	65%	56%	45%	34%	25%	18%	12%	10%	8%	6%	3%

Intensities in 270° c-plane

0°	5°	10°	15°	20°	25°	30°	35°	40°	45°	50°	55°	60°	65°	70°	75°	80°	85°	90°	95°
122	122	120	117	114	109	103	96	88	80	68	55	41	30	21	15	12	9	7	3
100%	100%	99%	96%	93%	89%	85%	79%	72%	65%	56%	45%	34%	25%	18%	12%	10%	8%	6%	3%

Beam angle 50%	Field angle 10%	Cutoff angle 2,5%	Intensity ratio in 120° cone	Intensity ratio in 90° cone
105.8°	160°	360°	78.3%	54.7%