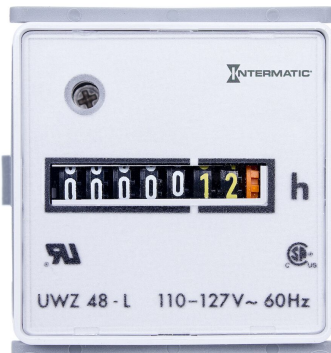


## Hour Meter - AC Hour Meter

Item UWZ48E-120U



### PRODUCT DESCRIPTION

Flush mounted with bracket, the UWZ48E unit fits into a 1.79" x 1.79" (45.5 x 45.5 mm) cutout. The thickness of the panel for flush mounting can be up to .35" (9 mm). The unit is secured in position by a plastic slip-on retaining bracket. The unit also fits square or round openings for 72 mm with optional 72 mm bezel.

### APPLICATIONS

- ▶ Monitoring
- ▶ Distribution/Control Panel

### TECHNICAL DATA

#### General

Model Number	UWZ48E-120U
Description	AC Hour Meter
UPC Code	078275153578
Brand	Domestic Intermatic
Country of Origin (Intermatic)	MEXICO
Warranty Period	1-Year limited

#### Control Specifications

Capacity (Hours)	99999.99
------------------	----------

#### Mechanical Specifications

Mounting Options	Flush
Number of Digits (Hours)	5
Number of Digits (Tenths)	2
Mounting Description	slip-on retaining bracket
Mechanical Movement	Synchronous

#### Dimensions

Mounting Depth (mm)	33
Mounting Depth (in)	1.3
Product Dimensions (H x W x D) in	2.13 x 1.89 x 1.65 in
Panel Opening Height (in)	1.79
Panel Opening Height (mm)	48
Panel Opening Width (in)	1.79
Panel Opening Width (mm)	48
Digits Height (mm)	4.1
Digits Height (in)	0.16
Bezel Width (mm)	48

Bezel Height (mm)	48
Bezel Width (in)	1.89
Bezel Height (in)	1.89

#### Material Specifications

Color	Light Gray
Digits Coloring (Hours)	White on Black
Digits Coloring (Tenths)	Yellow on Black
Hour Meter Material	Plastic

#### Electrical Specifications

Maximum Power Consumption (VA)	1
Wiring Option	1/4" Spade w/screw clamp
Input Voltage Range(s)	120 VAC, 60 Hz

#### Packaging

Shipping Weight (lbs)	0.18
Unit Carton Dimensions (H x W x L) in	2.25 x 3.25 x 3.25 in

#### Environmental Specifications

Environmental Rating	IP20
Temperature (operation)	-40 °F to 160 °F / (-40 °C to 72 °C)

#### Standards and Certifications

CSA Certification	cCSAus
Other Certifications and Compatibilities	RU; CE
CSA File Number	151753
RU File Number	#E22587
California Proposition 65	None
RoHS Certification	Y

---

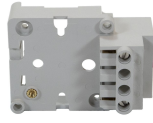
**ACCESSORIES**



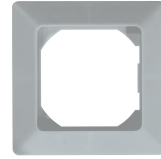
BEZ-55GRAYU  
55 mm Gray Bezel for UWZ48E Series



BEZ-55BLACKU  
55 mm Black Bezel for UWZ48E Series



MB-48V  
DIN Rail Mounting Base for UWZ48V Series



BEZ-72PU  
72 mm Gray Conversion Bezel (fits Round 3-Bolt Hole Opening) for UWZ48E Series