



# PL-C/T

## 11PL-C/T/COR/32H-3CCT/MF15/P/20/1

CorePro, LED, PL-C;PL-T, 11 W, Selectable, 3000 K, 3500 K, 4000 K, 1425 lm, 1450 lm, 1500 lm, 30000 hour(s)

Philips PLED 4-pin & 2-pin lamps are an affordable LED solution to replace compact fluorescent lamps. The product provides a natural lighting effect for use in many lighting applications, and provides instant energy savings, making them an environmentally-friendly solution. Available as replacements for 13W, 26W and 32W compact fluorescent lamps.

### Product data

| General Information                   |                                 |
|---------------------------------------|---------------------------------|
| Cap-Base                              | G24q                            |
| Nominal lifetime                      | 30,000 hour(s)                  |
| Switching Cycle                       | 50,000                          |
| Lighting Technology                   | LED                             |
| Light Technical                       |                                 |
| Color Code                            | 3000/3500/4000                  |
| Beam Angle (Nom)                      | 120 degree(s)                   |
| Luminous Flux                         | 1,425 1,450 1,500 lm            |
| Color Designation                     | 3000/3500/4000                  |
| Correlated Color Temperature (Nom)    | Selectable 3000 3500 4000 K     |
| Luminous Efficacy (rated) (Nom)       | 136.00 lm/W                     |
| Color Consistency                     | <6                              |
| Color rendering index (CRI)           | 83                              |
| LLMF At End Of Nominal Lifetime (Nom) | 70 %                            |
| All-in Type                           | All-in, Multi Color Temperature |

| Operating and Electrical  |             |
|---------------------------|-------------|
| Line Frequency            | 50 to 60 Hz |
| Input Frequency           | 50 to 60 Hz |
| Power Consumption         | 11 W        |
| Lamp Current (Max)        | 98 mA       |
| Lamp Current (Min)        | 39 mA       |
| Wattage Equivalent        | 32 W        |
| Starting Time (Nom)       | 0.5 s       |
| Warm-up time to 60% light | 0.5 s       |
| Power Factor (Fraction)   | 0.9         |
| Voltage (Nom)             | 120-277 V   |
| UL Type                   | UL Type B   |
| Temperature               |             |
| T-Case Maximum (Nom)      | 167 °F      |

# PL-C/T

## Controls and Dimming

|          |    |
|----------|----|
| Dimmable | No |
|----------|----|

## Mechanical and Housing

|                    |             |
|--------------------|-------------|
| Bulb Finish        | Frosted     |
| Bulb Material      | Plastic     |
| Product Length     | 5-5/16 inch |
| Bulb Shape         | PL-C;PL-T   |
| Net Weight (Piece) | 0.209 lb    |

## Approval and Application

|                           |                                |
|---------------------------|--------------------------------|
| Energy Saving Product     | Yes                            |
| Approval Marks            | RoHS compliance UL certificate |
| EU RoHS compliant         | Yes                            |
| Ambient temperature range | -4 to +113 °F                  |

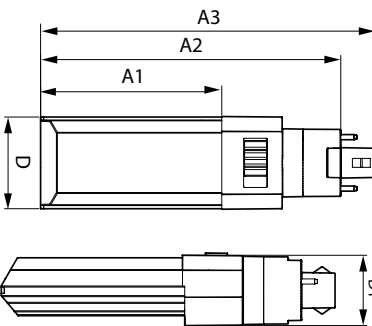
## Application Conditions

|                                     |     |
|-------------------------------------|-----|
| can it be used in closed luminaires | Yes |
|-------------------------------------|-----|

## Product Data

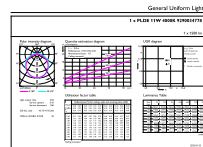
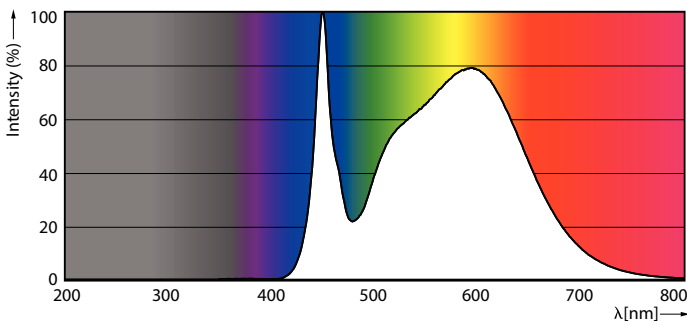
|                                 |                                   |
|---------------------------------|-----------------------------------|
| Order product name              | 11PL-C/T/COR/32H-3CCT/MF15/P/20/1 |
| Full product name               | 11PL-C/T/COR/32H-3CCT/MF15/P/20/1 |
| Order code                      | 577916                            |
| Material Nr. (12NC)             | 929003477804                      |
| Numerator - Quantity Per Pack   | 1                                 |
| EAN/UPC - Product/Case          | 046677577919                      |
| Numerator - Packs per outer box | 20                                |
| EAN/UPC - Case                  | 50046677577914                    |

## Dimensional drawing



| Product                           | D1         | D            | A1         | A2          | A3           |
|-----------------------------------|------------|--------------|------------|-------------|--------------|
| 11PL-C/T/COR/32H-3CCT/MF15/P/20/1 | 1-1/4 inch | 1-11/16 inch | 3-1/4 inch | 5-5/16 inch | 5-15/16 inch |

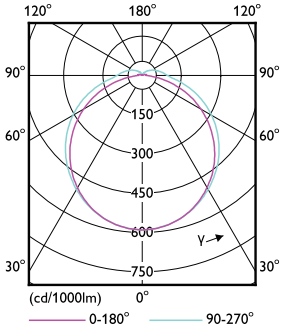
## Photometric data



Spectral Power Distribution Colour - 11PL-C/T/COR/32H-3CCT/MF15/P/20/1

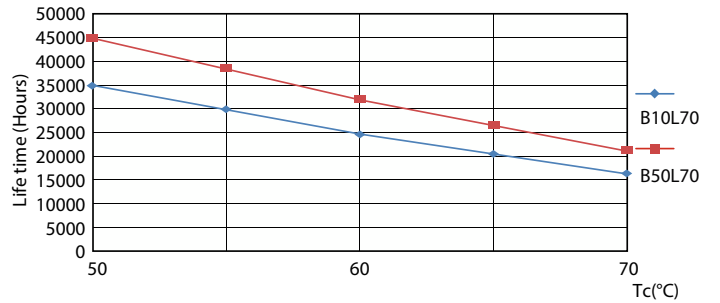
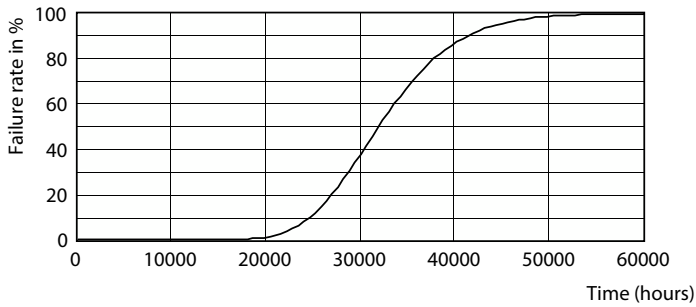
General uniform lighting - 11PL-C/T/COR/32H-3CCT/MF15/P/20/1

Photometric data

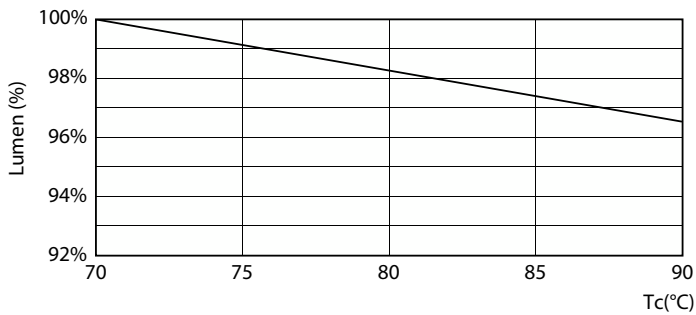


Light Distribution Diagram - 11PL-C/T/COR/32H-3CCT/MF15/P/20/1

Lifetime

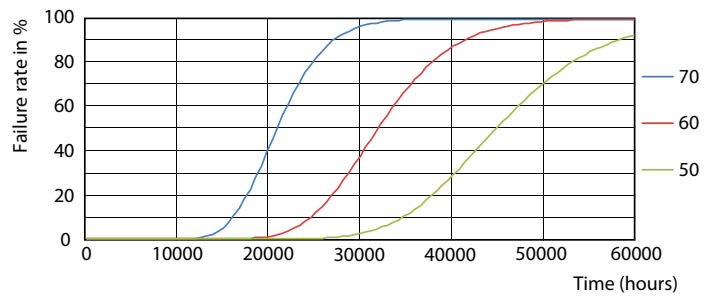


Life Expectancy Diagram



Lumen Maintenance Diagram - 11PL-C/T/COR/32H-3CCT/MF15/P/20/1

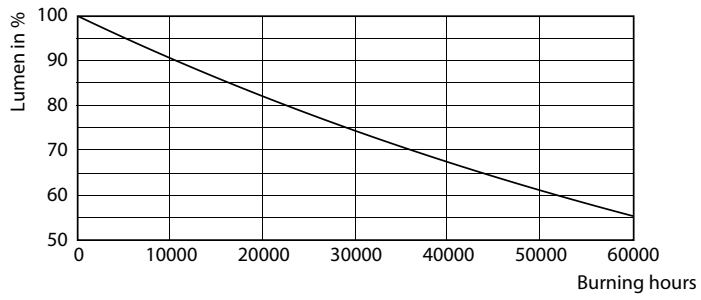
LifetimeVsTc



FailureRate

# PL-C/T

## Lifetime



Lumen Maintenance Diagram - 11PL-C/T/COR/32H-3CCT/MF15/P/20/1

