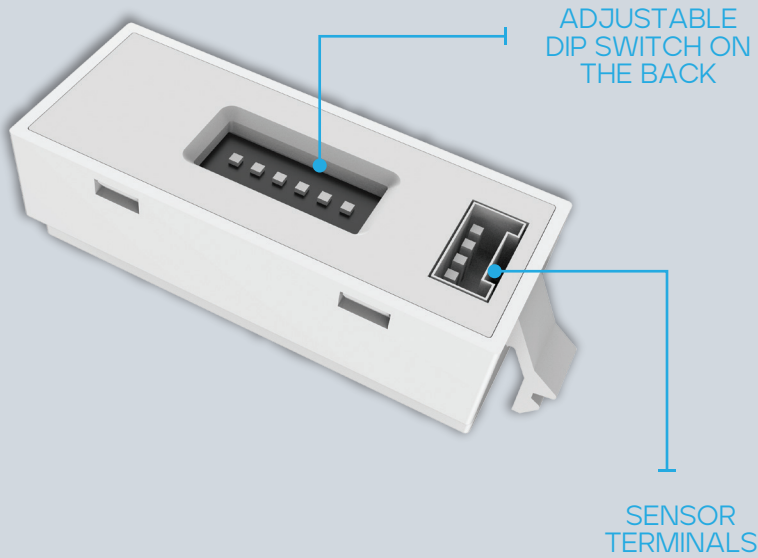


ADJUSTABLE MICROWAVE BI-LEVEL SENSOR LINEAR LINEAR WRAP COMPATIBLE



WORKS WITH:
LR25189
MW BI-LEVEL
REMOTE

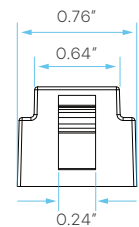
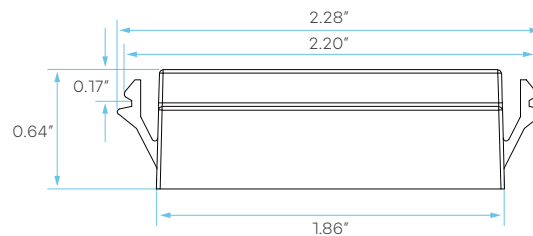
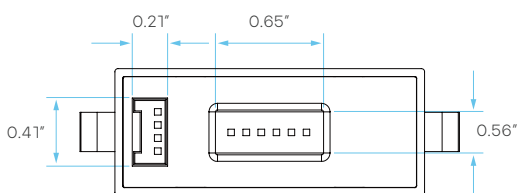


GENERAL

MODEL	DESCRIPTION	POWER	INPUT VOLTS	DIMMING	INSTALL HEIGHT	DETECTION RANGE	DETECTION ANGLE WITHOUT GLASS COVER
LR25377	LEDSNS/A/WRAP/MW/BILEVEL/1P	<0.5W	DC 10-15V	0-10V	9.84 FT	6.56 FT - 13.12 FT RADIUS	360° - CEILING MOUNT 120° - WALL MOUNT

AMBIENT TEMPERATURE: -31°F ~ 158°F

DIMENSIONS



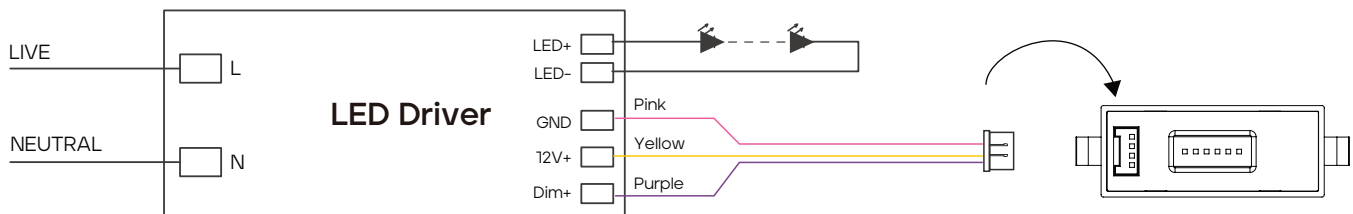
SPECIFICATIONS

Input Voltage	DC 10-15V
Input Current	<30mA (Regular-Version)
Stand-by Power	DC 10V @ < 0.5W
Control Method	0-10V
Microwave Power	<0.3mW
Detection Angle	Without Glass Cover (Ceiling Mounted 360 ° Wall Mounted ≤120 °)
Mounting Height	9.84ft (≤3m)
Detection Range	Radius: 6.56-13.12ft
Working Temp	-31°C to +158°C
IP Rating	IP20
Warranty	3 year

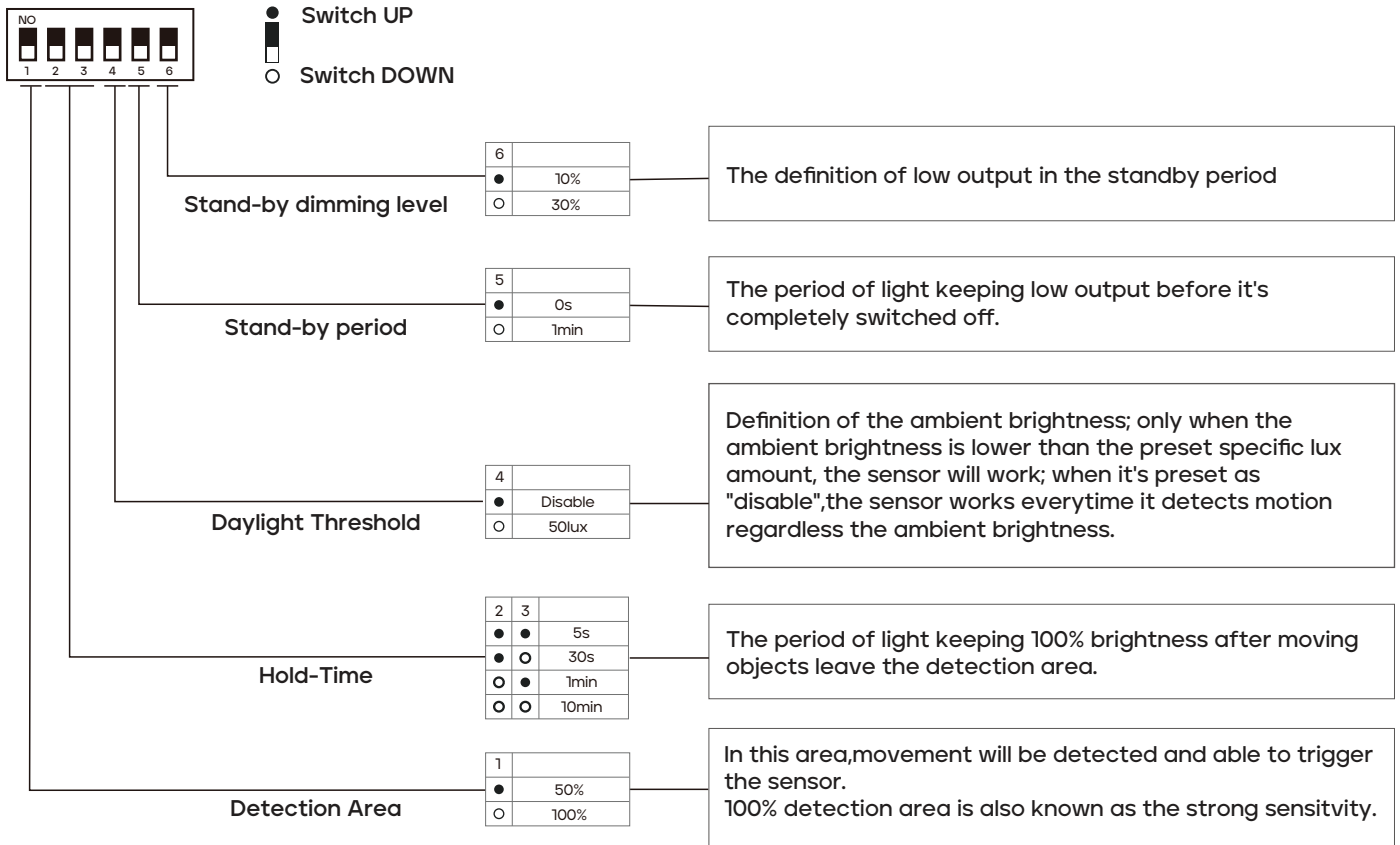
SENSOR PARAMETERS

SENSOR PARAMETER	CONTROL DEVICE	DIP SWITCH / LR25189 (SOLD SEPARATELY)
	DETECTION AREA	Remote Control: 25%/50%/75%/100% DIP Switch: 50%/100%
	HOLD TIME	Remote control Options : 5s/ 30s/ 1min/ 3min/ 5min/ 10min/ 20min/ 30min DIP switch: 5s/30s/1min/10min
	DAYLIGHT THRESHOLD	Remote control: Disable/2Lux (0-8)/10Lux (5-15)/30Lux (15-45)/50Lux (25-75)/ 80Lux/(40-120)/120Lux (60-180) DIP Switch: Disable/50Lux
	HOLD TIME	Remote control Options : 0s/ 10s/ 30s/ 1min/ 5min/ 10min/ 30min+∞ DIP Switch: 0s/1min
	STANDBY DIMMING LEVEL	Remote control: 10%/20%/30%/50% DIP Switch: 10% (Default)

WIRING



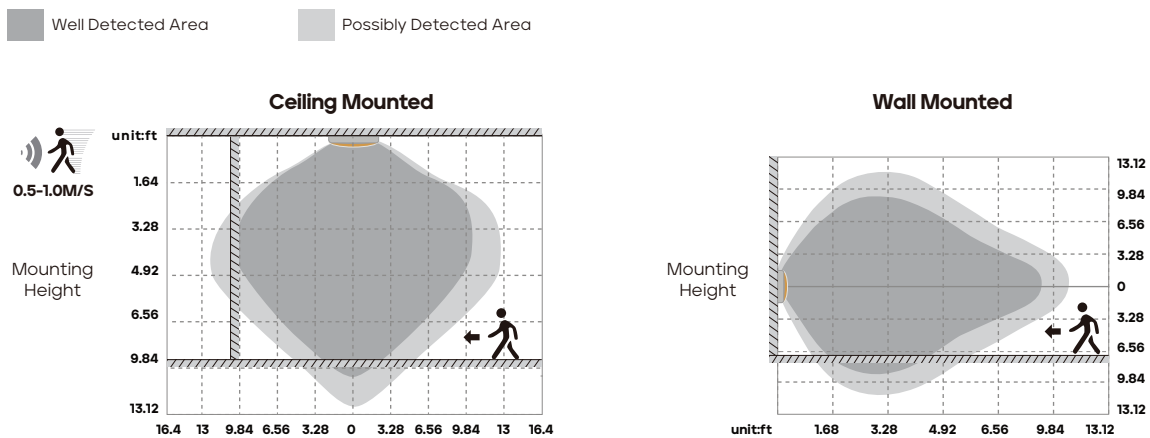
DIP SWITCH SETTINGS



DETECTION COVERAGE

Highest mounting height is 9.84ft (3m)

This figure indicates the maximum distance at the highest mounting height with 100% sensitivity.



PERFORMANCE

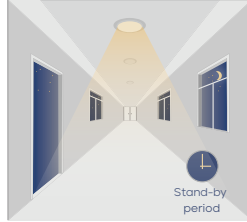
1. WITHOUT DAYLIGHT DISABLED



Sensor turns ON light when motion is detected.



Sensor keeps for a hold time period after motion leaves

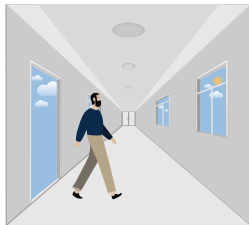


Sensor dims light to standby dimming level after hold time if there is still no motion

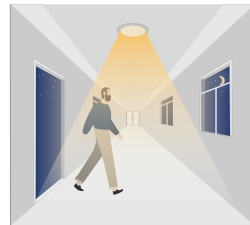


Sensor turns OFF light after standby period

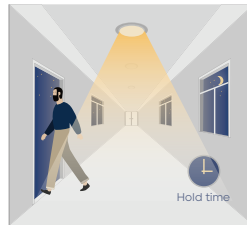
2. WITH DAYLIGHT THRESHOLD



With sufficient daylight the sensor keeps light OFF even motion gets detected



With insufficient daylight, the sensor turns light ON when motion gets detected



After there's no motion detected, the sensor keeps light ON 100% for holdtime.



After hold time, sensor dims light to standby dimming level for standby period. if the standby period has been set as 0s, sensor turns light OFF automatically after holdtime.



The sensor turns OFF light automatically after the stand by period when there's no motion detected.