



PL-S

6PL-S/COR/13H-5CCT/MF6/P/2P 20/1

CorePro, LED, PL-S, 6 W, 2700 K, 3000 K, 3500 K, 4000 K, 5000 K, 620 lm, 620 lm, 620 lm, 650 lm, 650 lm, 50000 hour(s)

Philips LED PL-S lamps make the transition to LED from CFL lamps as simple as replacing a lamp. The InstantFit (UL Type A) single-CCT and MainsFit (UL Type B) multi-CCT, 2-pin PL-S LED lamps are available for the selection. They offer a quickly and effectively replacement for 9W or 13W compact fluorescent PL-S lamps.

Product data

General Information	
Cap-Base	GX23
Nominal lifetime	50,000 hour(s)
Switching Cycle	50,000
Lighting Technology	LED
Light Technical	
Color Code	2700/3000/3500/4000/5000
Beam Angle (Nom)	140 degree(s)
Luminous Flux	620 620 620 650 650 lm
Color Designation	2700/3000/3500/4000/5000
Correlated Color Temperature (Nom)	2700 3000 3500 4000 5000 K
Luminous Efficacy (rated) (Nom)	108 lm/W
Color Consistency	<6
Color rendering index (CRI)	82
LLMF At End Of Nominal Lifetime (Nom)	70 %
All-in Type	All-in, Multi Color Temperature

Operating and Electrical	
Input Frequency	50 to 60 Hz
Power Consumption	6 W
Lamp Current (Max)	55 mA
Lamp Current (Min)	27 mA
Wattage Equivalent	13 W
Starting Time (Nom)	0.5 s
Warm-up time to 60% light	0.5 s
Power Factor (Fraction)	0.9
Voltage (Nom)	120-277 V
UL Type	UL Type B
Temperature	
T-Case Maximum (Nom)	131 °F
Controls and Dimming	
Dimmable	No

PL-S

Mechanical and Housing

Bulb Finish	Frosted
Bulb Material	Plastic
Product Length	6-5/16 inch
Bulb Shape	PL-S
Net Weight (Piece)	0.104 lb

Approval and Application

Energy Saving Product	Yes
Approval Marks	RoHS compliance UL certificate
EU RoHS compliant	Yes
Ambient temperature range	-4 to +113 °F

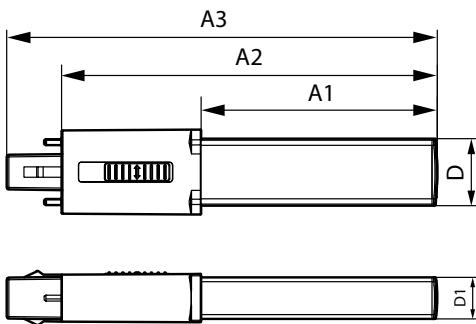
Application Conditions

can it be used in closed luminaires	Yes
-------------------------------------	-----

Product Data

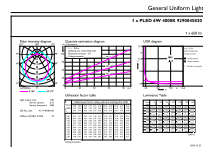
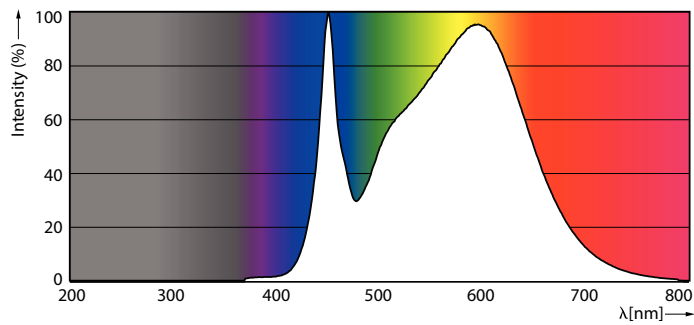
Order product name	6PL-S/COR/13H-5CCT/MF6/P/2P 20/1
Full product name	6PL-S/COR/13H-5CCT/MF6/P/2P 20/1
Order code	606574
Material Nr. (12NC)	929004583004
Numerator - Quantity Per Pack	1
EAN/UPC - Product/Case	046677606572
Numerator - Packs per outer box	20
EAN/UPC - Case	50046677606577

Dimensional drawing



Product	D1	D	A1	A2	A3
6PL-S/COR/ 13H-5CCT/MF6/P/2P 20/1	5/8 inch	1-1/16 inch	4-3/16 inch	6-5/16 inch	7-1/8 inch

Photometric data

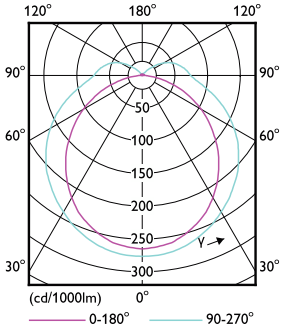


Spectral Power Distribution Colour - 6PL-S/COR/13H-5CCT/MF6/P/2P 20/1

General uniform lighting - 6PL-S/COR/13H-5CCT/MF6/P/2P 20/1

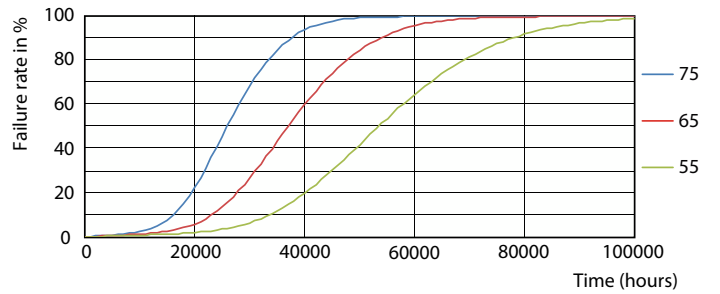
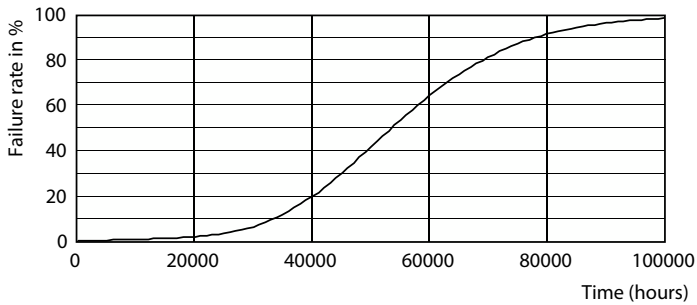
PL-S

Photometric data

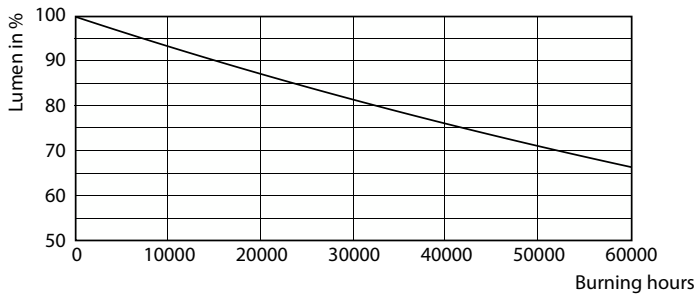


Light Distribution Diagram - 6PL-S/COR/13H-5CCT/MF6/P/2P 20/1

Lifetime

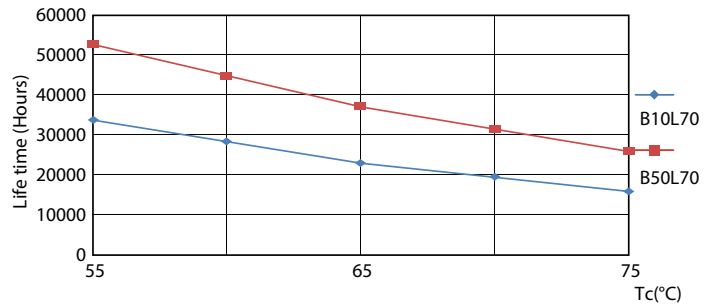


Life Expectancy Diagram



Lumen Maintenance Diagram - 6PL-S/COR/13H-5CCT/MF6/P/2P 20/1

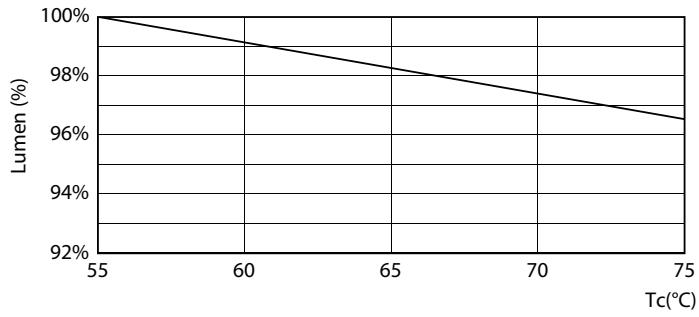
FailureRate



LifetimeVsTc

PL-S

Lifetime



Lumen Maintenance Diagram - 6PL-S/COR/13H-5CCT/MF6/P/2P 20/1

